

... College

(Continued from Page 1)
lege has opened in California with permanent buildings on campus. Normal procedure is to construct temporary buildings.

THE ARCHITECTS proposed the permanent construction begin with a complex which will later become a "small undergraduate liberal arts college."

About 200 acres of the hill-top site will be purchased for development as a low-rise college community to provide facilities for 16,000 full-time students. The campus will be designed to take full advantage of the views of Catalina Island, the Santa Monica Mountains, and Pacific Ocean.

Jones and Emmons say they will plan a campus reflecting the character of the peninsula area. The theme will be carried out in landscaping as well as design and construction of the facilities.

The initial building will provide 72,000 square feet for administrative offices, classrooms, food service, and a library.

The plans were given approval by the State College Board of Trustees at their meeting last week.

One Injured In Accident On Crenshaw

One person suffered major injuries Tuesday in a three-car accident on Crenshaw Boulevard just south of 230th Street. Taken to Little Company of Mary Hospital by ambulance was Alexander Romvari, 45, of 5287 Zakon Road. Godfrey Henry Lovell, 40, driver of one of the cars, and his passenger, Tonie Lovell, 8, of 2403 Lomita Blvd., said they would seek the aid of a private physician for minor injuries.

Driver of the other vehicle involved, a pickup truck, was John Anthony Abbot, 24, of 23915 Pennsylvania Ave.

Cerebral Palsy Names Local 'March' Head

Mrs. William E. Elrod, 2202 W. 179th St., has been named chairman for the "53 Minute March" for United Cerebral Palsy Assn. by television star, Bill Dana.

Dana, who is serving as honorary campaign chairman, announces that the drive will be held, May 1-3 throughout the Los Angeles County.

Mrs. Elrod, a mother of five children has also been an active worker for the Community Chest and March of Dimes.

Volunteers are still needed in the Torrance area, and anyone interested in further information may contact Mrs. Elrod at DA 3-7478.

The "53 Minute March" will serve a two-fold purpose. It is not only instrumental in raising funds, but helps the public to understand cerebral palsy, which afflicts a newborn baby every 53 minutes. There are more than 17,000 cerebral palsied in Los Angeles County.

The \$350,000 goal is a minimum amount of funds needed to maintain the 12 agencies of the United Cerebral Palsy Assn., headquartered at 1726 W. Pico Blvd., Los Angeles.

Saxons Will Stage 'Our Miss Brooks'

"Our Miss Brooks," a musical comedy based on the television series of the same name, will be presented by the North High Music Department to-night, Friday and Saturday.

Tickets for the production, which stars Kristine Whitley as the scatter-brained English teacher, are \$1 for high school students and adults, and 50 cents for elementary students.

Daniel Walker will direct the production, which he describes as "a great story."

Other members of the cast are Paul Stilwell, Carol Tierney, Barbara Bareford, Michael Dominguez, Harvey Cohen, Yvonne Coletti, Mary Jonas, Tecla Lewis, Larry Kappen, Carole Lewis, and Millie McCarty.

Also in the production are Debbie Jonas, Bonnie Biffle, Melody Pisis, Michael Newman, Elaine Matza, James Darcy, Kathi Dittmar, and Beverly Hotchkins.

Curtain time for all three performances is 8 p.m.

Assessor Asks for Tax Memo

County Assessor Phil Watson has asked the attorney general's office to issue a current opinion in order to clarify the methods of determining eligibility for veteran's exemptions.

Watson wants to know whether the assessors should use market value or assessed valuation in computing the assets of a veteran to judge his qualification for the exemption.

The Los Angeles assessor called the present system "inconsistent and confusing." It is based on four opinions issued between 1912 and 1936.

Watson's office handles more than 40 per cent of all veteran claims in the state. Some 31,000 of the 150,000 claims already filed are incomplete, reports Watson.

The incomplete claims are being held in room 225 at the Hall of Administration and veterans are being notified they must appear in person to complete the forms. State law prohibits the assessor from returning incomplete forms.

Music teaches us two virtues greatly needed today... discipline in preparation, imagination in performing. — Dr. Rudolph Ganz.

Established Jan. 1, 1914
Torrance Herald
Member of National Editorial Association, Calif. Newspaper Publishers Assn., L.A. Suburban Newspapers, Inc. Verified Audit Circulation Represented Nationally By The Rensel Co.
Publication office and plant, 1619 Gramercy Ave., Torrance, Calif. Published Semi-Weekly, Thursday and Sunday by King Williams Press, Inc. Entered as second class matter January 30, 1914, at Post Office, Torrance, California, under act of March 3, 1879.
GLENN W. PFEL, Publisher
Reid L. Bundy — Managing Editor
Gene Roberts — Display Adv. Mgr.
Bernard Brady — Regional Adv. Mgr.
Evelyn Stillwell, Classified Adv. Mgr.
Carroll Wattcott — Circulation Mgr.
Chas. R. Thomas — Mechanical Supt.
Adjudicated a legal Newspaper by Superior Court, Los Angeles County, Adjudicated Decree No. 218470, March 30, 1927.
SUBSCRIPTION RATES: By Carrier, 50¢ a month. Mail subscriptions, \$12.00 a year. Circulation office FA 4-4002.

Sea Barrier Unit Contract Awarded to Glendale Firm

A contract for the construction of Unit 4 of the west basin sea barrier was awarded this week to Weeshoff Construction Co. of Glendale. The Board of Supervisors accepted

a low bid of \$182,545 in awarding the contract. Supervisor Burton W. Chace said the bid was nearly \$50,000 below the estimate of the county engineer.

Agreement To Protect Bridge Set

A two-way agreement to protect the San Diego Freeway bridge over Dominguez Channel in Torrance during construction of the watercourse has been approved, according to Supervisor Kenneth Hahn.

Parties to the pact are the County Flood Control District and the State Division of Highways.

Hahn said it provides for the state to pay the district \$12,000 for the protective work which will include construction of collars around the piles of the bridge.

The freeway's crossing of the channel is located west of Wilmington Avenue.

A \$3.4 million contract for improving Dominguez Channel from Wilmington Avenue to Avalon Boulevard is now in progress, Hahn said.

It was awarded to Guy F. Atkinson Co. of Long Beach by the Board of Supervisors last July 30.

The channel contract is due for completion late in 1965.

Work on the project, which involves the installation of a 1.75-mile section of water supply pipeline through sections of Redondo Beach, Torrance, and county territory, will begin within two or three weeks.

The pipeline will run in Prospect Avenue on the western edge of the city south to Pacific Coast Highway from Torrance Boulevard. The line will then run east on Pacific Coast Highway to Paseo de Gracia and south to Via Los Altos.

The project is being supervised by the County Flood Control District.

Smith Will Read Paper To Institute

Frank M. Smith, a senior in electrical engineering at New Mexico State University, has been invited to enter the paper competition of the Southwestern Regional Institute of Electrical and Electronic Engineers. The group will meet in Dallas, Texas, April 21.

Smith will present a paper on "Electrical Analogues of Acoustical Systems." The paper won first place in competition at the university.

Peninsula Mayor Takes Own Life

The body of Mayor Roland L. Amberg of Rolling Hills was found by his wife in the bathroom of the family home late Tuesday night. Sheriff's officers investigating the death said he died from a rifle shot in the head and listed the death as suicide.

Mrs. Amberg discovered the body when she returned to the home about 10 p.m. She said she called for her husband and saw light coming from under the bathroom door, then opened the door and discovered the body.

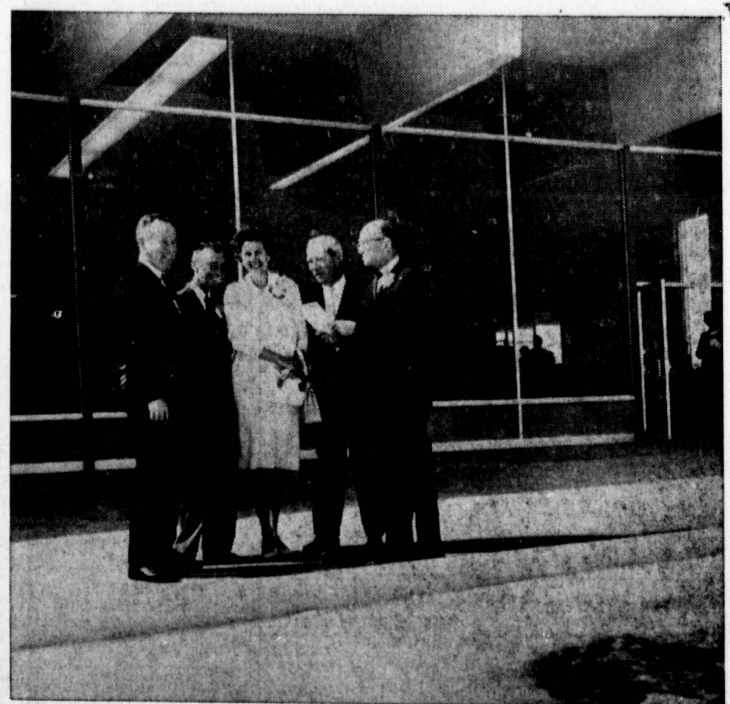
Amberg had been at the city hall earlier keeping tabs on election returns. He was not up for reelection.

Officers found a .22-caliber rifle on the floor near Amberg's foot. Sgt. Charles Vaughn said the mayor had been shot through the right ear.

Mrs. Amberg did not see a note on the bathroom door which advised her, "Don't come in here." The note went on to describe his love for his wife and their children, then added, "I wish there was some other way, but I can't control my thoughts and I can't stand the misery I'm causing you."

With a final sentence, Amberg told his wife, "Just remember the good things of our life together."

Sheriff's officers ordered a coroner's report on the case.



DEDICATE CENTER... Representatives of the Joslyn Foundation and civic officials participated in formal dedication ceremonies last Saturday afternoon for the Joslyn Recreation Center. The center, named for industrialist Marcellus Joslyn, who donated 50 per cent of the funds for the structure, will eventually become a center for adult social life. Shown here in front of the new building are Bernard Dougan, vice chairman of the city's Parks and Recreation Commission; Weldon Fulton, architect for the center; Mrs. Mary Currihan, a trustee of the Joslyn Foundation, and her husband, Edward, with Mayor Albert Isen. (Herald Photo)

CARSON BOOTERY
1221 W. CARSON ST. TORRANCE 320-0460
CORNER CARSON & NORMANDIE
BankAmericard & Habis Espanol
Mon. and Fri., 9 a.m. - 9 p.m.
Sun., 10 a.m. - 4 p.m.
Tues., Wed., Thurs., Sat., 9 a.m. - 8 p.m.
JOIN OUR SHOE CLUB FREE

CHILDREN'S SHOES
BUSTER BROWN
KALISTENICKS
JUMPING JACKS
RED GOOSE
PROTECTIVE
SAVE \$2.00 TO \$5.00 A PAIR

Jack Purcell • Converse • P.F. Flyers

WOMEN'S SHOES
VALENTINE
PIERRE DEBS
LIFE STRIDE
NATURALIZER
AIR STEP
SAVE \$3.00 TO \$8.00 A PAIR

U.S. Keds • Deck Shoes

MEN'S SHOES
JARMAN
FLORSHEIM
FOOT JOY
ALLEN EDMONDS
ROBLEE
SAVE \$3.00 TO \$10.00 A PAIR

WE CARRY A FULL LINE OF CHILDREN'S ORTHOPEDIC SHOES, 6 to EE Widths. We Guarantee the Fit and wear. Doctor's Prescriptions Filled.

THE BROADWAY'S 68TH ANNIVERSARY SALE

Sale Prices Are Lower Than "Discount"

RCA Victor 19" Portable TV
Specially Low Sale-Priced

No money down,
\$8 monthly

139.88

Dependable RCA quality throughout... super-powerful "New Vista" tuner; 18,000 volt chassis; 172 sq. in. viewable picture area; telescoping antenna; top controls and carry handle.

Platter Pole
Holds up to 75 LP's
5.48
For Ceilings up to 8'3"

Decorative brass finished extension pole with "browser racks" puts your favorite LP's within arms reach. Extra racks available to double capacity, \$3; pole for ceilings up to 11 ft. 6.48.

Complete Phonola Stereo Outfit
No Money Down \$6 Monthly
99.95
Stereo phono has automatic 4-speed changer, twin 5 1/4" speakers—one in removable speaker. Diamond stylus, 45 RPM spindle included. Comes with pedestal stand, wall hanging brackets, 36 album rack and 3 LP's.

'64 Frigidaire Automatic Washer
No Money Down \$11 Monthly
198.88
New model featuring 2 speeds, 3 cycles and giant 12-lb. wash capacity. Automatic detergent/bleach/dye dispensing; automatic lint disposal. Price includes delivery, normal installation and 1-year's service.

G.E. DeLuxe Portable Dishwasher
No Money Down \$9 Monthly
158.88
No more hand-rinsing or hand-scraping. Three-way wash action; Power Shower sprays down; Power Tower shoots up; Power Arm swirls around to clean everything sparkling clean. Holds 15 place settings, needs no installation.

Westinghouse 7-Transistor Radio
Complete With Kit
\$12
Plays up to 75 hours with the two penlite batteries included. Complete with carrying case, earphone. An American-made miniature that will give you hours of listening pleasure at a tiny price.

MAJOR APPLIANCES—Main Floor

the Broadway DEL AMO
OUR 68TH ANNIVERSARY
IN THE DEL AMO CENTER
Hawthorne at Carson, Torrance — FR 1-4681

Lower-Priced Kelvinator "12.1" in Color
No Money Down \$9 Monthly
164.88
Priced even lower with a trade-in! Features 50.4-lb. freezer chest; 18.2-lb. cold storage tray; fresh food storage including twin crispers; 3 full-width cabinet shelves; deluxe door shelves. In pink, yellow, copper, turquoise or white.

New Hoover Slimline Canister Vac
No Money Down \$5 Monthly
34.88
Carry-case type styling that weighs less than 18 lbs. complete. Features "triple filter" air flow; throw-away bag; lighter vinyl hose; over 1 H.P. motor. Stores on end, against the wall—or on a shelf.

SHOP MONDAY THROUGH SATURDAY, 10:00 A.M. to 9:30 P.M.