

**ALL STORES JOIN IN THE SALE-ABRICATION DURING THE GRAND OPENING AT OUR NEW STORE LOCATED AT Vermont and Santa Barbara Ave.**

IMPERIAL AT BELLFLOWER  
CANOGA AT ROSCOE

17500 CRENSHAW BLVD. AT ARTESIA  
910 W. SANTA BARBARA AT VERMONT

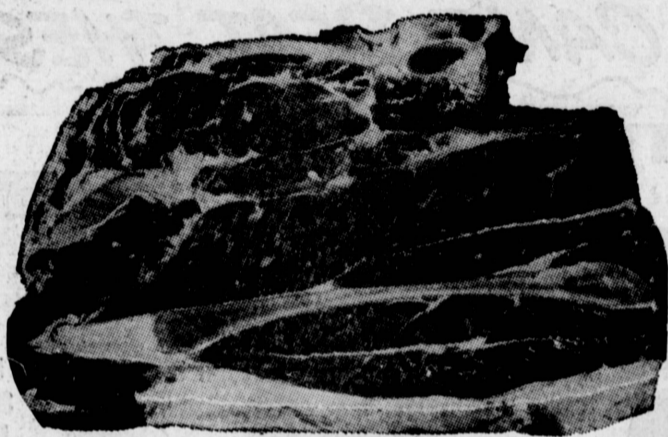


**BLUE CHIP STAMPS**  
Blue Chips Too!

2655 PACIFIC COAST HWY. AT CRENSHAW

# GRAND OPENING

**WHEN IT COMES TO VALUES... COME TO FOODS CO. (It Pays)**



U.S.D.A. CHOICE STEER BEEF

**CHUCK STEAKS**

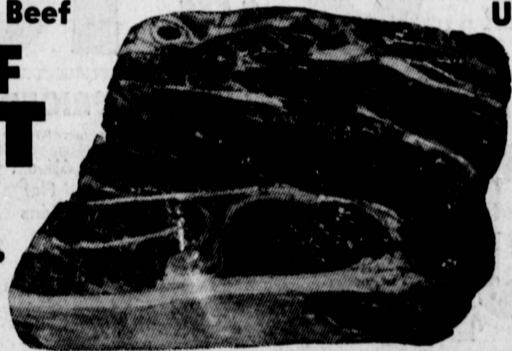
FOODS CO. OFFERS THE LARGEST SELECTION OF CALIFORNIA WINES ON THE PENINSULA... THIS WEEK FEATURING - CHARLES KRUG CALIFORNIA WINES

**37** ¢ lb

U.S.D.A. Choice Steer Beef

**SEVEN BONE BEEF ROAST**

**39** ¢ lb



U.S.D.A. Choice Steer Beef

**ROUND BONE BEEF ROAST**

**49** ¢ lb

*From Our Delicatessen*

**STARLITE - THICK SLICED BOLOGNA**

**49** ¢ lb

---

**KRAFT NATURAL AGED BIG EYE SLICED SWISS CHEESE**

**3** 6-oz. Pkgs. **\$1.00**

---

**IMPORTED DANISH DANOLA SLICED HAM**

**5 1/2-OZ. PKG. 65** ¢

Beef-Pork-Veal

**MEAT LOAF**

**49** ¢ lb

---

FRESH - LEAN - TASTY

**GROUND BEEF**

**39** ¢ lb

---

FRESH - EXTRA LEAN

**GROUND CHUCK**

**49** ¢ lb

U.S.D.A. CHOICE STEER BEEF BONELESS SHOULDER CLOD

**ROAST**

**69** ¢ lb

U.S.D.A. CHOICE CHUNKS OF BONELESS BEEF FOR

**BEEF STEW**

**69** ¢ lb

U.S.D.A. GRADE CHOICE STEER BEEF ROUND BONE SWISS

**STEAKS**

**59** ¢ lb

U.S.D.A. CHOICE STEER BEEF LEAN, TENDER

**SHORT RIBS**

**29** ¢ lb

---

U.S.D.A. CHOICE STEER BEEF

**BOILING BEEF**

**19** ¢ lb

**DINNER GUESTS? SERVE LAMB TONIGHT**

U.S.D.A. CHOICE BABY LAMB

**ROUND BONE LAMB CHOPS**

**69** ¢ lb

U.S.D.A. GRADE CHOICE BABY LAMB SQUARE CUT

**SHOULDER LAMB ROAST**

**29** ¢ lb

U.S.D.A. CHOICE BABY LAMB

**SHOULDER LAMB CHOPS**

TREAT THE FAMILY TO SPRING LAMB!

**59** ¢ lb

MORRELL'S

**YORKSHIRE BRAND THICK SLICED BACON**

**2** LB. PKG. **79** ¢

It's Delicious