

# IT'S A... SMASH!

"JIM — YOU WERE RIGHT!  
PLAZA DISCOUNT STORE'S  
PRICES ARE MUCH LOWER  
THAN THE FRONT LINE  
DISCOUNT  
STORES"



**BIG NEWS**

**VALUABLE COUPON**

CANNON LARGE SIZE 16x26 **PACK OF 4**  
**FACE TOWELS** **4 FOR 47¢**

LIMIT 1 PACK PER ADULT WITH THIS COUPON  
Offer Good Thurs., Fri., Sat., April 9, 10, 11

**2 COMPARTMENT**  
**BREAD BOX** **59¢**

Gravity Closed Door.  
Baked Enamel Interior.  
Slightly Irr., Assorted Colors  
Reg. \$3.95

**RCA TABLE RADIO** **\$8<sup>88</sup>**

Reg. \$17.88  
White Stock Lath!

**ATTACHE' CASE** **\$6<sup>88</sup>**

Reg. \$16.75  
Size 18"  
Color Suntan

**3-DRAWER MAPLE STYLE HARDWOOD DESK** **\$28<sup>88</sup>**

PLASTIC TOP  
44" x 32" x 18"  
Reg. \$44.50

**LAMP SHADES** **98¢**

Up to 25" Tall  
VALUES TO \$7.50

**DORMEYER ELECTRIC LAWN TRIMMER EDGER** **\$9<sup>98</sup>**

REGULAR \$22.50

**ALUMINUM FOLDING CHAISE LOUNGE** **\$7<sup>77</sup>**

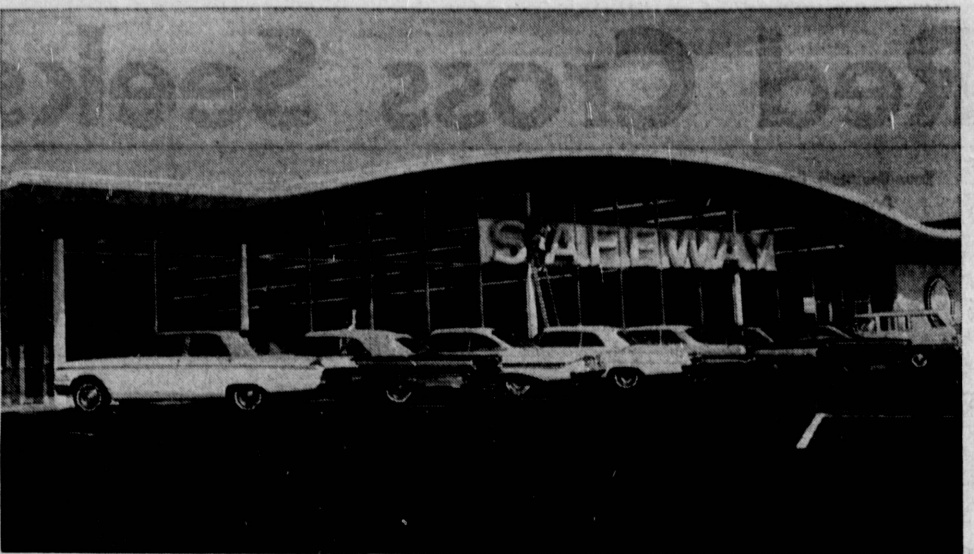
4 POSITION BACK REST  
A TERRIFIC BUY!

**A STEAL! EVEREADY 9 VOLT TRANSISTOR BATTERIES** **29¢**

**FOLDING ALUMINUM WEB PATIO CHAIRS** **\$3<sup>29</sup>**

"PLAZA'S PRICES ARE LOWER THAN THE FRONT LINE DISCOUNT STORES"

**PLAZA DISCOUNT STORE**  
Broadway & Hawthorne Blvds.  
(2 BLOCKS NORTH OF EL SEGUNDO BLVD. ON HAWTHORNE)  
OPEN LATE MON. & FRI. EVES



**NEW SAFEWAY STORE . . .** Grand opening of the newest Safeway store in Torrance was marked yesterday. The modern new store is located at 4705 Torrance Blvd., just west of Anza Avenue. One of the most modern supermarkets in the area, the Safeway store will feature large grocery, meat, and produce departments. Parking facilities are more than adequate on the large site. Victor C. Waldahl will manage the store. (Herald Photo)



**FINAL CHECK . . .** Making a last-minute check of stocked shelves in the new Safeway store are manager Victor Waldahl and Chamber of Commerce manager J. Walker Owens, and Chamber president George Post. The store opened yesterday morning at 4705 Torrance Blvd. (Herald Photo)



**MANAGER . . .** Victor C. Waldahl has been named manager of the new Safeway store in Torrance. An employee of Safeway since 1947, Waldahl most recently managed the store in Pacoima. He completed store manager training in 1960. (Herald Photo)



**ASSISTANT . . .** William F. Burgess Jr. will assist Victor C. Waldahl in the management of the Safeway store at 4705 Torrance Blvd. Burgess, who first joined Safeway in 1954, had served as assistant manager of the Lomita store until recently. (Herald Photo)



**FRESH MEATS . . .** Melvin W. Gray's main responsibility as manager of the Safeway meat department will be to keep the self-service cases stocked with fresh meats. (Herald Photo)



**HEADS DISTRICT . . .** Claude M. Collins will head the Torrance District for Safeway stores as district manager. Collins is headquartered at the Lomita store, 2155 Pacific Coast Hwy. (Herald Photo)



**PRODUCE MANAGER . . .** Hiroshi "Jimmy" Tokudomi will manage the produce department of the Torrance Safeway store at 4705 Torrance Blvd. He first joined the Safeway chain in 1957 and named produce manager for the Redondo Beach store in 1960. (Herald Photo)

**VISIT THE H & L ASIAN IMPORTS**

The Southwest's Largest Gift Shop  
Distinctive Gifts for All Occasions  
2621 PACIFIC CST. HWY. AT CRENSHAW ROLLING HILLS PLAZA

**GOTTUM SICK FRIEND?**  
Sendum Heap Pretty Flowers from . . .  
**FRONTIER FLORIST**  
25408 CRENSHAW BLVD. TORRANCE, CALIF. DA 5-4272  
Phone Orders Welcomed—Charge Accounts Invited  
Free Delivery

Over 130,000 people of all ages read the HERALD!

**SAVE VALUABLE COUPON WORTH 50¢**

This is our way of inviting you to use this complete Dry Cleaning Center. Coupon good for 50c allowance on 8-lbs. dry cleaning self-service load. Regular \$2.00 value only \$1.50.

**OUR SERVICES INCLUDE:**

- Professional Custom Dry Cleaning
- Giant Dry Cleaning machine for large drapes, bedspreads, blankets, etc.
- Complete Self-Service Laundry — FREE DRY

PLENTY OF COUNSELORS TO ASSIST YOU  
OPEN EVERY NITE 'TIL 9; SUNDAY 'TIL 6 P.M.

**NORGE**  
LAUNDRY AND CLEANING VILLAGE

ROLLING HILLS PLAZA  
Crenshaw and Pacific Coast Hwy.  
DA 6-9886

— Good Thru April 16 —