

2nd Thru Wed., April 8th

39^c lb
45^c lb
23^c lb
10^c lb
3 lbs \$1.00

FARMER JOHN FRESH
PORK LOINS

RIB HALF
39^c lb

CENTER CUT
CHOPS
59^c lb

LARGE LOIN
CHOPS
49^c lb

ROCK CORNISH
GAME HENS

22-OUNCES EACH

U.S.D.A. GRADE "A"
79^c ea

USAGE \$1

3 1⁰⁰

Queen's Pantry Frozen
Mince Pies
6 FOR \$1⁰⁰

20-oz. — Reg. 3 for 1.00
 2.00 Value — Save 1.00
 WITH THIS COUPON —
 MONDAY, APRIL 6 ONLY

Fancy Quality Frozen
Fish Sticks
4 FOR \$1⁰⁰

Reg. 49c lb.—1.96 Value
 Save 96c
 TUESDAY, APRIL 7 ONLY
 WITH THIS COUPON

Frozen C-Plus
Limeade
15 FOR \$1⁰⁰

6-oz. Cans—Reg. 2 for 25c
 1.90 Value — Save 90c
 WEDNESDAY, APRIL 8 ONLY
 WITH THIS COUPON

Deer Park — Reg. 25c
COCONUT COOKIES
5 FOR \$1⁰⁰

HANDY ANDY

Quart **49^c**

Bingo Horsemeat
Dog Food

8 16-oz. Cans **\$1⁰⁰**

Folger's
INSTANT COFFEE

10-oz. **\$1⁵⁹**

Fisher's
BISCUIT MIX

40-oz. **29^c**

KLEEN ALL LIQUID — Reg. 69c
CLEANSER Quarts **4 FOR 1⁰⁰**

GOLDEN NUGGET — Lb. 35c; 2-lbs. 69c
PEANUT BUTTER 4-lb. **1¹⁹**

PEACHES, PLUMS, APRICOTS No. 10 Can **59^c**

3-MINUTE — Reg. 59c
QUICKER OATS 24-oz. **39^c**

24-oz. 25c; 45-oz. 49c
JEWEL OIL Gal. **1⁴⁹**

BURMA MIXED NUTS 13-oz. **59^c**

C.H.B. Salad Dressing, Sandwich Spread or
MAYONNAISE 24-oz. **29^c**

CHEF'S DELIGHT — 1-lb. Loaf 33c
CHEESE SPREAD 2-lb. Loaf **59^c**

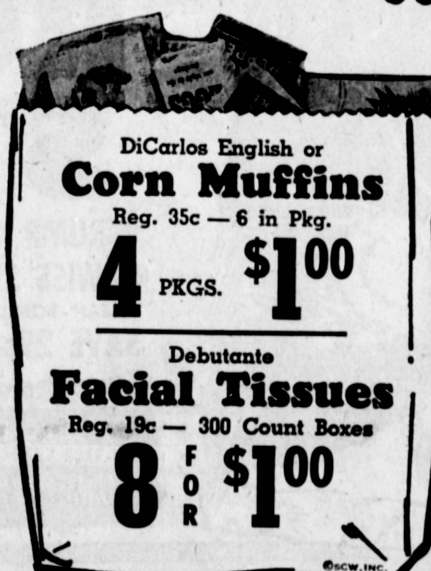
FISHER'S
CHEESE SPREAD 2-lb. **69^c**



Foremost Dutch Pride — 1/2-Gal. **4 for \$1**
 IMITATION ICE MILK
 Foremost BUTTERMILK 1/2-Gal. **29^c** Qt. **15^c**
 Foremost Small or Large Curd COTTAGE CHEESE Qt. **49^c** Pt. **25^c**

— LA CHOY CHINESE FOODS —

5-oz. SOY SAUCE **2 for 29^c**
 5 1/2-oz. CHOW MEIN NOODLES **25^c**
 No. 303 Cans BEAN SPROUTS **2 for 29^c**
 No. 303 Cans CHOP SUEY VEGETABLES **25^c**
 34-oz. — With Mushrooms CHOP SUEY VEGETABLES **59^c**
 42 1/2-oz. — Bi-Pack MUSHROOM CHOW MEIN **79^c**
 42 1/2-oz. — Bi-Pack BEEF CHOW MEIN **79^c**
 42 1/2-oz. — Bi-Pack CHICKEN CHOW MEIN **79^c**
 5-oz. WATER CHESTNUTS **39^c**
 No. 303 Cans MEATLESS CHOP SUEY **29^c**
 No. 303 Cans — Bi-Pack MUSHROOM CHOW MEIN **59^c**
 No. 303 Can BEEF CHOW MEIN **69^c**
 No. 303 Can CHICKEN CHOW MEIN **69^c**



DiCarlos English or
Corn Muffins
 Reg. 35c — 6 in Pkg.
4 PKGS. \$1⁰⁰

Debutante
Facial Tissues
 Reg. 19c — 300 Count Boxes
8 FOR \$1⁰⁰

C.H.B. PURE PRESERVES 2-lb. **49^c**
 SPRINGFIELD FLOUR 5-lb. **39^c** 10-lb. **69^c**
 LANGENDORF — Reg. 15c — 2 to Pkg. ANGEL — 40 Pies — 3.00 Value
 CHOCOLATE PIES 20 Pkgs. **1⁰⁰**
 CHARCOAL BRIQUETS 10-lb. **59^c**
 NO. 10 CAN APPLE SAUCE **79^c**

CINCH — 16-oz. WAFFLE MIX **8 FOR 1⁰⁰**
 BORDEN'S NEUFCHATEL — Reg. 41c CREAM CHEESE 8-oz. **4 FOR 1⁰⁰**
 CINCH — Full Assortment CAKE MIX 17-oz. Boxes **5 FOR 1⁰⁰**
 SPAGHETTI OR — 2-lb. Pkgs. ELBOW MACARONI **4 FOR 1⁰⁰**
 IRIS SPARKLING BEVERAGE — Reg. 240 12-oz. Case of 24 **1⁶⁹**

Earlans Chopped — 4-oz. **5 for**
 MUSHROOMS Earlans Pieces & Stems — 2-oz. **8 for**
 MUSHROOMS Ballard's — 10 to Can **10 for**
 BISCUITS Willapoint — 10-oz. **4 for**
 OYSTER STEW Pillsbury's — 10 to Can **12 for**
 BISCUITS Shady Oak Mushroom — 6-oz. **12 for**
 STEAK SAUCE Specify — 40-oz. **3**
 POTATOES Swift's Strained or Junior — Reg. 25c **6 for**
 MEAT FOR BABIES Braw — 15-oz. **4 for**
 CORNED BEEF HASH

Miss Lou — 8-oz. OYSTERS **4 for**
 Allsweet — 1-lb. Ctns. **4 for**
 OLEO Iris — No. 303 Cans CRANBERRY SAUCE **5 for**
 Sacramento — No. 2 Cans Fancy Peach PIE FILLING **6 for**
 Imported KIPPERED SNACKS **8 for**
 Carnation — 9-oz. CHUNK TUNA **3 for**
 McCoy's — No. 1/2 Cans WHITE MEAT TUNA **3 for**
 McCoy's — No. 1/2 Cans LIGHT MEAT TUNA **4 for**

FROZEN FOODS

Patio — With Gravy — Reg. 49c
TAMALES 12 to Pkg. **3 FOR 1⁰⁰**
 Arrivederci CHEESE PIZZA 16-oz. **59^c**
 Arrivederci PEPPERONI PIZZA 19-oz. **69^c**
 Patio Frozen — 12 to Pkg. TORTILLAS **10 FOR 1⁰⁰**
 Patio Frozen COMB. DINNERS **39^c**
 Patio ENCHILADA DINNER **39^c**
 Chicken of the Sea — Reg. 25c TUNA PIES 8-oz. **6 FOR 1⁰⁰**
 2-lb. FISH STICKS **59^c**
 Frigid Dough DINNERS FULL ASSORTMENT **3 FOR 1⁰⁰**
 Downy Flake PANCAKES 6 to Pack **8 FOR 1⁰⁰**
 Feller's Butter — 12-oz. BEEF STEAKS **3 FOR 1⁰⁰**

Flowing Gold — 6-oz. ORANGE DRINK **8 FOR 1⁰⁰**
 Cal Fame LEMONADE 6-oz. **10 FOR 1⁰⁰**
 Cal Fame All — 6-oz. LEMON DRINKS **10 FOR 1⁰⁰**
 Cal Fame — 6-oz. MAMBO PUNCH **10 FOR 1⁰⁰**
 Cottage Brand WAFFLES **8 FOR 1⁰⁰**
 Frigid Dough Fruit or BERRY PIES **4 FOR 1⁰⁰**
 Orange or Raspberry — Reg. 39c POPSICLES 6 to Pkg. **4 FOR 1⁰⁰**
 Twin Pak — Reg. 39c — 6 to Pkg. FUDGESICLES **4 FOR 1⁰⁰**
 Rainbow Popsicle—Reg. 39c, 6 to Pkg. FRUIT BARS **4 FOR 1⁰⁰**
 Queen's Pantry Pumpkin or — 20 oz. MINCE MEAT PIES **5 FOR 1⁰⁰**
 Brea Gold — 6-oz. ORANGE JUICE **6 FOR 1⁰⁰**

JEWELRY & WATCH REPAIR DEPT.
 Paramount & Lakewood Stores Only
Your OLD Ring Needn't Look OLD
 LET US REPAIR OR REMOUNT YOUR DIAMONDS. THE PRICE IS RIGHT!
 USE YOUR BANKAMERICARD OR OUR LAY-AWAY.

LIQUOR DEPT.
VODKA AND/OR GIN 4/5 QTS 2⁸⁸
 ● SAVE 25c
MOTHER'S PRIDE ROOT BEER
 BUY FIRST HALF GALLON FOR **35^c**
 GET SECOND HALF GALLON FOR **10^c**
 ● BLACK CHERRY, STRAWBERRY
 ● COLA, ROOT BEER, ORANGE Plus **45^c**
 ● LEMON-LIME, CHERI-COLA Deposit
 BREWED IN THE EAST **PREMIUM BEER 6 PACK 12-oz. Cans 85^c**
 T.V. AND RADIO TUBES TESTED FREE!

McCOY'S MARKETS
 ● DOWNEY 13235 So. Woodruff
 ● LONG BEACH Anaheim at Cherry 5286 E. 2nd St. 2824 E. Anaheim 4232 E. Anaheim 2290 Santa Fe Blvd. 4100 Orange Ave. 2058 Pacific Ave.
 ● HOLLYDALE 12222 Garfield Ave.
 PRICES EFFECTIVE AT ALL McCOY'S MARKETS

CAL FAME PURE — Reg. 69c ORANGE JUICE Jumbo 43-oz. **59^c**
 COMSTOCK APPLE OR CHERRY—Reg. 49c PIE FILLING **3 FOR 1⁰⁰**
 Ringo Fruit Punch or Orange FRUIT DRINK 1/2-Gal. **4 FOR 1⁰⁰**
 STOKELY'S — No. 303 Cans CREAM CORN **8 FOR 1⁰⁰**
 HI-GRADE BEEF STEW 24-oz. **39^c**
 HI-GRADE CORNED BEEF 12-oz. **39^c**
 AMERICAN BEAUTY RONI-MAC 12-oz. **8 FOR 1⁰⁰**
 AMERICAN BEAUTY ELBO-RONI 12-oz. **8 FOR 1⁰⁰**
 AMERICAN BEAUTY SPAGHETTI 12-oz. **8 FOR 1⁰⁰**
 AMERICAN BEAUTY NOODLES 8-oz. **8 FOR 1⁰⁰**