



JOINS REFINERY . . . G. G. Cortelyou has been named general operations manager of the Torrance refinery of Mobil Oil Co. Former manager of the company's refinery at Ferndale, Wash., Cortelyou is a graduate of California Institute of Technology and joined the company in 1938.



NEW POST . . . Ronald Boltz has been appointed assistant vice president and manager of the new Torrance office of Crocker-Citizens National Bank, according to Roy A. Britt, vice chairman of the board. The local branch located on Hawthorne Boulevard will open March 20.



DIAMOND PIN . . . Harold I. Harrison, 2004 Reynosa Drive, was presented a diamond service pin commemorating his 35th anniversary with Southern California Edison Co. He is district credit representative at the company's Inglewood office.



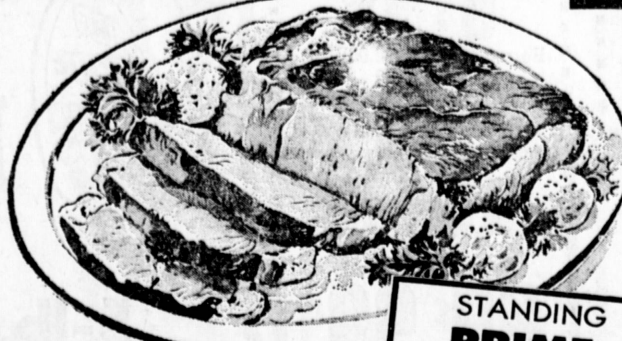
CHIEF ENGINEER . . . Donald C. Connett has been appointed chief engineer of the west coast engineering office by the Mobile Hydraulic Division of Vickers Inc. Division of Sperry Rand Corp. He has a wide background in mobile and aircraft hydraulic engineering, including 10 years experience at Vickers.

Of the approximately 392,000 Americans who participated in the Spanish-American War, a total of 11,000 were killed in action. The number of living Spanish-American War veterans totals 26,000, according to the Los Angeles County Service Office.



U.S.D.A. CHOICE BEEF

BEEF SALE



TENDER, TASTY - THICK CUT
SWISS STEAK BONE-IN **59^c** lb.

Choice RUMP ROAST
Tender, Juicy Bone-In **69^c** lb.

STANDING PRIME RIB ROAST
Tender, Juicy **69^c** lb.
SMALL END 79^c lb.

FULL-CUT ROUND STEAK BONE-IN **69^c** lb.

Boneless, Tender SIRLOIN TIP or CUBE STEAKS
Lean, Juicy **89^c** lb.

T-BONE STEAKS Tender Tasty **95^c** lb.

TENDER, JUICY - "KING-SIZE"
PORTERHOUSE CHOICE STEAKS **99^c** lb.

WELL-TRIMMED, TENDER RIB STEAKS **79^c** lb. TENDER, JUICY CLUB STEAK **89^c** lb.
BONELESS, TENDER ROUND STEAK **79^c** lb. TENDER, TASTY, Center-Cut CHUCK STEAK **49^c** lb.

Tender, Boneless FAMILY STEAK **79^c** lb.
Tender, Boneless TOP SIRLOIN CHOICE STEAKS **\$1.29** lb.

PLATE BOILING BEEF **19^c** lb. BOYS LOW PRICE!
SHORT RIBS of BEEF Tender, Lean **29^c** lb.
CLOD ROAST Boneless Rolled **89^c** lb.

BEEF CHUCK ROAST Boneless Tender **79^c** lb.
CHUCK BEEF Pot ROAST Tender, Juicy **39^c** lb.

FRESH, LEAN GROUND CHUCK **59^c** lb.
FRESH, LEAN GROUND ROUND **69^c** lb.

CARNATION Evaporated MILK NO. 1 Tall Cans **225^c**

FRESH-FROZEN, STREAM FRESH BRAND
Mountain TROUT A Real Treat! 12-OZ. PKG. **59^c**
FILET of SWORD-FISH 12-OZ. PKG. **59^c**
COOKED & PEELLED SHRIMP 6-OZ. PKG. **49^c**

WILSON Sliced BACON CORN KING **49^c** lb.

RATH Sliced BACON BLACK-HAWK **59^c** lb.

DEL MONTE SPINACH or CATSUP 15-OZ. CAN or 14-OZ. BTL. **7^c** FOR 1

Del Monte - 16-OZ. PEAS, ZUCCHINI, Stewed TOMATOES, Sliced BEETS or PINEAPPLE-GRAPEFRUIT DRINK 29-OZ. CAN **5^c** FOR 1
Your Choice

Del Monte CORN Cream Style - Whole Kernel 16-OZ. or Vacuum-Pack 12-OZ. **6^c** FOR 1
Your Choice

Del Monte TOMATO SAUCE 8-OZ. CAN **7^c**

MORTON'S FROZEN MEAT PIES Chicken, Turkey or Beef 8-OZ. PIES **6^c** FOR 1

Del Monte PEACHES Sliced or Halves NO. 2 1/2 CAN **25^c**

M & D Toilet Tissue 3 4-Roll Packs **\$1**

Chicken-of-the-Sea CHUNK TUNA Light Meat 6 1/2-OZ. CAN **25^c**

Del Monte JUICE PINEAPPLE-GRAPEFRUIT DRINK or TOMATO 46-OZ. CANS **3 FOR 89^c**

PRUNE JUICE DEL MONTE QT. BTL. **39^c**

ASPARAGUS SPEARS - DEL MONTE Green Tip & White, 14-OZ. CAN **39^c**

PUREX BLEACH HALF GALLON **39^c**

MAXWELL HOUSE Instant COFFEE with FREE COFFEE MAKER! 10-OZ. in Heat Proof Glass Carafe **\$1.69**

Lipton TEA BAGS 48-Count PKG. **59^c**

BOYS DISCOUNT FILM PROCESSING ON PHOTO FINISHING and PRINTING NEEDS! Black & White - Color - Movie Developing - Printing - Enlarging! **1/3 OFF**

Fresh Frozen Foods CYPRESS GARDENS Orange Juice Pure Frozen 6-OZ. CANS **4^c** FOR 1

CERTI-FRESH Breaded SHRIMP 24-OZ. PKG. **\$1.49**

LOS MUCHACHO'S TORTILLAS 1-DOZ. CORN TORTILLAS IN PKG. **10^c** DOZ.

CERTI-FRESH FILET PERCH, SOLE or COD 1-lb. PKG. **59^c**

Farmer John LIVER ROLLS (Braunschweiger) 8-OZ. ROLL **29^c**
GALILEO Italian Sliced SALAMI 3-OZ. PKG. **33^c**

Fresh, Crisp ROMAINE LETTUCE **10^c** Hd

FANCY, RUSSET POTATOES U.S. NO. 1 8 lb. Cello Bag **35^c**

ORANGES Sweet, Juicy VALENCIA **10^c** lb.

CREST Toothpaste EXTRA LARGE REG. 69c **53^c**

CUT-RITE SANDWICH BAGS PKG. of 75 **23^c**

Maxwell House COFFEE 1-lb. CAN **73^c** 2 lb. ... **\$1.45** 3 lb. ... **\$2.09**

AD GOOD 7 FULL DAYS! THURSDAY MARCH 19th thru WEDNESDAY MARCH 25th

The BOYS MARKETS

- IN LOS ANGELES SHOP AT:
- 120th and Vermont
 - Crenshaw and Rodeo
 - Vermont and Slauson
 - Pico and Arapahoe
 - 47th and Broadway
 - Florence and Figueroa
- OTHER BOYS MARKETS IN SOUTHERN CALIFORNIA:
- ★ COMPTON, Willowbrook & Palmer Downey, 12270 Paramount
 - ★ FULLERTON, N. Raymond & Commonwealth
 - ★ GARDENA, Redondo Beach and Van Ness
 - ★ HAWTHORNE, 118th St. and Hawthorne
 - ★ LA MIRADA, Imperial and Luitwieler
 - ★ HIGHLAND PARK, Ave. 56 & Monte Vista
 - ★ LAKEWOOD, Lakewood Center
 - ★ LONG BEACH, 3750 E. Anaheim
 - ★ MONTEBELLO, Beverly and Wilcox
 - ★ NORWALK, Pioneer and Alondra
 - ★ POMONA, Holt and Indian Hill
 - ★ REDONDO, Manhattan Beach & Inglewood
 - ★ SAN FERNANDO, Glen Oaks and Hubbard
 - ★ SAN GABRIEL, Valley and Del Mar
 - ★ TORRANCE, Normandie and Carson
 - ★ WILMINGTON, Avalon and Anaheim
- * NOTE: COMPLETE PHARMACY WITH PRESCRIPTION SPECIALISTS AT STORES MARKET *