

SHOPPERS MARKETS We Give Blue Chip Stamps SHOPPERS MARKETS We Give Blue Chip Stamps SHOPPERS MARKETS We Give Blue Chip Stamps SHOPPERS MARKETS We Give Blue Chip Stamps

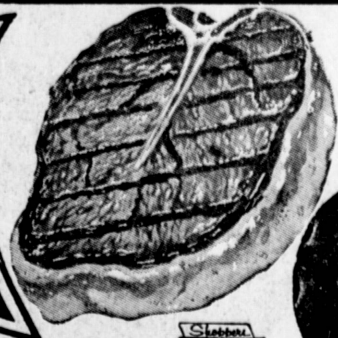
WE GIVE BLUE CHIP STAMPS

Shoppers MARKETS

FIRST IN AMERICA WITH

7 SALE DAYS

THURSDAY thru WEDNESDAY
FEBRUARY 13 thru FEBRUARY 19, 1964
TAX COLLECTED ON TAXABLE ITEMS

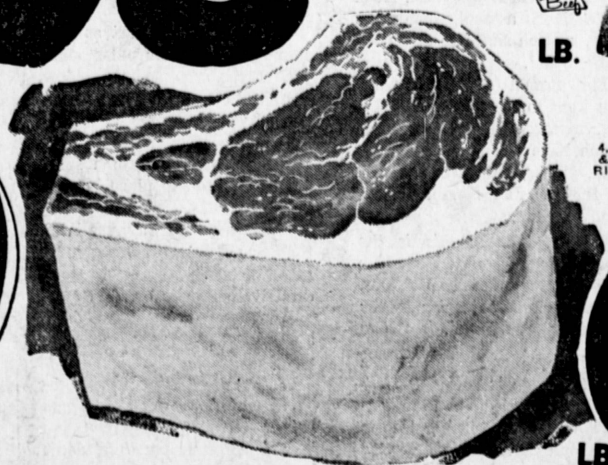
U.S. "CHOICE"
T-BONE STEAKS

98¢
LB.



U.S. "CHOICE"
CHUCK STEAKS

39¢
LB.



U.S. "CHOICE"
STANDING RIB ROAST

69¢
LB.

LIGHT MEAT
Chicken OF THE SEA
CHUNK TUNA

6 1/2-OZ. CAN
SAVE 8c

25¢

CAL-FAME FROZEN
ORANGE JUICE

6-OZ. CANS
SAVE 33c

4¢

WESSON OIL

24-OZ. BOTTLE
SAVE 8c

25¢

SHOPPERS MAYONNAISE

24-OZ. JAR
SAVE 14c

29¢

\$ SALE!

FRUIT COCKTAIL \$1.50
NO. 303 CANS SAVE 25c

SLICED PINEAPPLE \$1.15
NO. 1 1/4 FLAT CANS SAVE 25c

U.S. "CHOICE"
ROUND STEAK 69¢
U.S. "CHOICE"
PORTER-HOUSE \$1.09

U.S. "CHOICE"
RIB STEAK 79¢
U.S. "CHOICE"
BONELESS TOP SIRLOIN STEAK \$1.29

HILLS BROS. COFFEE

1-LB. CAN

59¢

TOMATO JUICE \$1.45
46-OZ. CANS SAVE 24c

FRUIT DRINK \$1.15
29-OZ. CANS SAVE 25c

U.S. "CHOICE"
FILET MIGNON . . . LB. \$1.98
U.S. "CHOICE"
NEW YORK STEAKS . . . LB. \$1.98
U.S. "CHOICE"
SPENCER STEAKS . . . LB. \$1.69
U.S. "CHOICE"
BONELESS CHUCK or BEEF STEW . 79¢
U.S. "CHOICE" • RUMP, SIRLOIN TIP • ROUND
BONELESS BEEF ROASTS 89¢
FRYER-ROASTER CHICKENS
FRESH GRADE "A" 39¢
LEG PORTION 49¢ BREAST PORTION 59¢

CLUB • SIRLOIN TIP & CUBE STEAKS . . . 98¢
U.S. "CHOICE"

FARMER JOHN FIRST QUALITY BACON
SLICED 1-LB. PKG. 49c

U.S. "CHOICE" RUMP ROAST 69c

SNOW'S SEA FOODS

- MINCED CLAMS 7 1/2-OZ. CAN
- CLAM CHOWDER 15-OZ. CAN
- 900 CALORIE DIET FOOD
- SEGO LIQUID 4 10-OZ. CANS
- MEADOW GOLD COTTAGE CHEESE 25c

VALUE-PAK COOKIES

- CHOCOLATE SANDWICH
- VANILLA SANDWICH
- ASSORTED SANDWICH
- 1 1/2-LB. PKGS. \$1
- 10-OZ. CANS \$1
- PINT QUART 49c

CUT BEETS 7 NO. 303 CANS \$1

PURPLE PLUMS 5 NO. 303 CANS \$1

SAUERKRAUT 7 NO. 303 CANS \$1

VIM VEGETABLE JUICE COCKTAIL 3 46-OZ. CANS \$1

CORN BEEF HASH 3 15 1/2-OZ. CANS \$1

PORK & BEANS 8 NO. 300 CANS \$1

LENTEN SEAFOOD FRESH and FROZEN

GREEN SHRIMP 79¢
MEDIUM SIZE

RED SNAPPER 59¢
FRESH FILET

Gorton's Scallops 49¢
7-OZ. PKG.

FRENCH FRIED HALIBUT 69¢
VAN DE KAMP'S • FROZEN • 9 1/2-OZ. PKG.

CERTI-FRESH SEAFOODS

- FROZEN • FRIED FISH STICKS 3 8-OZ. PKGS. \$1
- BREADED COD PERCH or HADDOCK Your Choice 10-oz. Pkg. 39¢
- BREADED FANTAIL SHRIMP FULL 1 1/2-LB. PACKAGE \$1.59

LITTLE FRISKIES

CATS LOVE IT!
16-OZ. PKG. 25¢

CHUNG KING DINNERS

- CHICKEN CHOW MEIN 2 1/4-LB. CAN 89¢
- BEEF CHOP SUEY
- MUSHROOM CHOW MEIN
- CHUNG KING Chow Mein Noodles 4 NO. 2 1/2 CANS \$1
- CHUNG KING SOY SAUCE . . . 2 5-OZ. BOTTLES 35¢

Wong's FROZEN CHINESE FOODS

- Chicken or Pork Chop Suey Shrimp Chow Mein Fried Rice 39¢
- Egg Foo Young Sweet & Sour Pork Egg Rolls 49¢

FROZEN FOODS

- GORDO MEXICAN DINNERS: BEEF ENCHILADAS, CHEESE ENCHILADAS, TACO • TACOMOLE FULL TRAY 39¢
- GORDO FROZEN ENTREES: CHEESE ENCHILADAS, BEEF ENCHILADAS, BEEF TACOS 3 REG. PKGS. \$1

PICTSWEEP VEGETABLES

- CUT CORN • BUTTER BEANS
- PEAS • PEAS AND CARROTS
- LEAF OR CHOPPED SPINACH

6 REG. PKGS. \$1

LIQUORS

- NONE FINER SHOPPERS VODKA: FULL FIFTH \$2.98, FULL QUART \$3.69
- MELLOW 8 • 8 YR. OLD STRAIGHT BOURBON 5th \$3.49
- 86.8 PROOF • IMPORTED SCOTTISH REGAL SCOTCH WHISKY 5th \$4.99

U.S. NO. 1 • RUSSET
POTATOES 829¢
LB. CELLO BAG

NAVEL ORANGES 429¢
LB. CELLO BAG
• SWEET • JUICY

Van de Kamp's VALENTINE FEATURES

FANCY • THIN SKIN JUICY • FLORIDA RUBY RED or COACHELLA WHITE GRAPE-FRUIT 10c

THURS. FRI. FEB. 13 & 14 ONLY
Cake, Cup Cakes, Cookies and Chocolates

VETS DOG FOOD 16¢
NO. 1 TALL CANS

Delicatessen

- WISCONSIN FULL-CREAM LONGHORN CHEDDAR CHEESE 59¢
- DAIRY FRESH IMPORTED CHOPPED HAM 39¢
- SLICED VIENNA PASTRAMI 4-OZ. PKG. 39¢
- SEERSUCKER DUSTERS \$1.99

LOS ANGELES Pico at La Cienega Central Avenue at 43rd Place S. SAN GABRIEL East Gpwy at Del Mar LONG BEACH Edg Wardlaw at Cerritos TORRANCE Pacific Coast Hwy. at Crenshaw East Carson at Main SAN PEDRO 25th Street at Western Ave. INGLEWOOD Arbor Vitae at La Cienega SANTA MONICA Wilshire Blvd. at Berkeley Lincoln Blvd. at Ocean Park WESTCHESTER Lincoln Blvd. at Manchester NORWALK Firestone at Studebaker E. LOS ANGELES 1819 E. First Street at the Triangle

OPEN 9 a.m. to 10 p.m. 7 DAYS A WEEK

TORRANCE SAN PEDRO
PACIFIC COAST HWY. at CRENSHAW 25th at WESTERN

Naturally—We Give BLUE CHIP STAMPS

SHOPPERS MARKETS We Give Blue Chip Stamps SHOPPERS MARKETS We Give Blue Chip Stamps SHOPPERS MARKETS We Give Blue Chip Stamps SHOPPERS MARKETS We Give Blue Chip Stamps