

SHOPPERS MARKETS We Give Blue Chip Stamps SHOPPERS MARKETS We Give Blue Chip Stamps SHOPPERS MARKETS We Give Blue Chip Stamps SHOPPERS MARKETS We Give Blue Chip Stamps

**WE GIVE BLUE CHIP STAMPS**



**Shoppers MARKETS**

FIRST IN AMERICA WITH

**7 SALE DAYS**

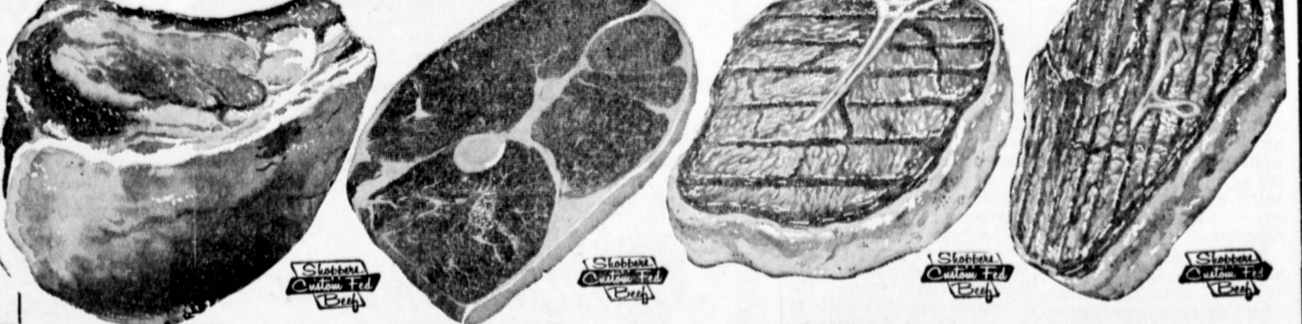
THURSDAY thru WEDNESDAY  
JANUARY 2 thru JANUARY 8, 1964

TAX COLLECTED ON TAXABLE ITEMS



# SAVE MORE IN '64 WITH SHOPPERS CUSTOM FED BEEF!

- The Top U.S.D.A. "Choice" Beef.
  - Scientifically fed in our own feed lots to yield more lean and tender beef of the highest quality.
  - Properly aged and trimmed to perfection.
- Brought to you at no additional cost and guaranteed to give complete satisfaction or your money cheerfully re-fund.



<b>PORTERHOUSE STEAK</b> U.S. "CHOICE" LB. <b>\$1.09</b>	<b>RUMP ROAST</b> U.S. "CHOICE" LB. <b>69¢</b>	<b>TOP SIRLOIN STEAK</b> U.S. "CHOICE" LB. <b>\$1.29</b>	<b>RIB ROAST</b> U.S. "CHOICE" LB. <b>69¢</b>	<b>ROUND STEAK</b> U.S. "CHOICE" LB. <b>69¢</b>	<b>T-BONE STEAK</b> U.S. "CHOICE" LB. <b>95¢</b>	<b>CHUCK ROAST</b> U.S. "CHOICE" LB. <b>33¢</b>
--	--	--	---	---	--	---

<b>Watermelon RUMP</b> ARM CUT • U.S. "CHOICE" U.S. "CHOICE" RIB STEAK U.S. "CHOICE" • BONELESS BEEF STEW U.S. "CHOICE" • LEAN BOILING BEEF	<b>79¢</b> <b>59¢</b> <b>79¢</b> <b>69¢</b> <b>19¢</b>	<b>CLUB, SIRLOIN TIP and CUBE STEAKS</b> U.S. "CHOICE" <b>89¢</b> FARMER JOHN or LUER FIRST QUALITY BACON SLICED 1-LB. PKG. <b>49¢</b>	<b>LEAN MEDIUM SPARE RIBS</b> <b>29¢</b>	<b>U.S. "CHOICE" CHUCK STEAK</b> U.S. "CHOICE" • ROLLED ROAST BONELESS CHUCK U.S. "CHOICE" SPENCER STEAK U.S. "CHOICE" NEW YORK STEAK U.S. "CHOICE" • BONELESS TOP ROUND STEAK	<b>39¢</b> <b>69¢</b> <b>\$1.69</b> <b>\$1.98</b> <b>89¢</b>	<b>U.S. "CHOICE" GROUND BEEF</b> U.S. "CHOICE" GROUND CHUCK U.S. "CHOICE" GROUND ROUND SHOULDER CUT PORK ROAST SHOPPERS HOMEMADE PORK SAUSAGE U.S. "CHOICE" BEEF SHORT RIBS	<b>39¢</b> <b>59¢</b> <b>69¢</b> <b>39¢</b> <b>3 lbs. \$1</b> <b>39¢</b>	<b>SIRLOIN TIP, ROUND AND RUMP BONELESS ROASTS</b> U.S. "CHOICE" FILET MIGNON FRESH • GRADE "A" CHICKENS ROASTING CHICKENS MORE LEGS PER LB. • GRADE "A" 4-LEGGED FRYERS FRESH • GRADE "A" • CUT UP STEWING CHICKENS	<b>lb. 89¢</b> <b>lb. \$1.98</b> <b>39¢</b> <b>49¢</b> <b>29¢</b>	<b>FRESH • GRADE "A" QUARTERED FRYERS</b> LEG PORTION BREAST PORTION <b>39¢</b> <b>49¢</b> No Necks, No Backs, No Giblets <b>BEST OF THE FRYERS</b> ALL LEGS, THIGHS, WINGS & BREASTS <b>49¢</b>
--	--	---	---	--	--	--	---	---	---	--

<b>GOLD MEDAL FLOUR</b> 5 LB. BAG <b>39¢</b>	<b>GUEST RANCH BATHROOM TISSUE</b> 4 ROLL PACK ROLLS • SAVE 33c <b>\$1.16</b>	<b>EVAPORATED • HOMOGENIZED CARNATION MILK</b> NO. 1 TALL CANS SAVE 16c <b>\$1.08</b>	<b>FOLGER'S COFFEE</b> ALL GRINDS • 1-LB. CAN <b>\$1.55</b>
---	--	--	---

<b>Hunt's Dollar Sale</b> PORK & BEANS ... 5 NO. 2 1/2 CANS \$1 POTATOES ... 10 NO. 300 CANS \$1 PEACHES SLICED or HALVES ... 4 NO. 2 1/2 CANS \$1 TOMATOES SOLID PACK ... 4 NO. 2 1/2 CANS \$1 Stewed Tomatoes ... 7 NO. 300 CANS \$1 TOMATO SAUCE ... 12 8-OZ. CANS \$1 TOMATO PASTE ... 10 6-OZ. CANS \$1 APRICOTS : WHOLE UNPEELED ... 4 NO. 2 1/2 CANS \$1	<b>HUNT'S • TOMATO JUICE</b> SAVE 45c 46-OZ. CANS <b>\$1.05</b>	<b>HUNT'S • TOMATO CATSUP</b> SAVE 52c 14-OZ. BOTTLES <b>\$1.08</b>	<b>HUNT'S • FRUIT COCKTAIL</b> SAVE 17c NO. 300 CANS <b>\$1.05</b>	<b>VETS • NUTRITIOUS DOG FOOD</b> NO. 1 TALL CANS <b>\$1.16</b>
---	--	--	---	---

<b>VALUE-PAK COOKIES</b> Chocolate or Vanilla Sandwich 12-OZ. PKGS. <b>\$1.05</b>	<b>CAL-FAME • FROZEN FRUIT DRINKS</b> • Raspberry-Lemon • Cherry-Apple • Strawberry-Lemon • Cherry-Lemon • Pineapple-Raspberry 6-OZ. CANS <b>\$1.10</b>	<b>"COOK IN BAG" BANQUET ENTREES</b> • SLICED BEEF • CREAMED CHICKEN • SLICED TURKEY 4 5-OZ. PKGS. <b>\$1.49</b>	<b>PARAMOUNT BLUE RIBBON FROZEN BEEF STEAKS</b> PKG. OF 10 <b>59¢</b>	<b>LINT-FREE LARGE TERRY DISH TOWELS</b> ea. <b>39¢</b>
---	---	--	--	--

<b>BANANAS</b> GOLDEN RIPE PINTO BEANS U.S. NO. 1 IDAHO FANCY • MEDIUM SIZE SUNKIST ORANGES	<b>10¢</b> <b>8¢</b> <b>10¢</b>	<b>Winesap Apples</b> <b>10¢</b>	<b>Van de Kamp's RED TULIP SPECIALS</b> THURS. - SUN. JAN. 2 - 4 Plain or Sugared DOUGHNUTS 29c ENGLISH MUFFINS 29c FRUIT CAKE 1-LB. \$1.29	<b>MONTEREY JACK CHEESE</b> FULL CREAM <b>59¢</b> <b>LEO'S SLICED MEATS</b> • SLICED BEEF • SLICED HAM • TURKEY ROLL • SPICY BEEF • CORNED BEEF 3 REG. PKGS. <b>\$1</b>	<b>EL SOL CORN TORTILLAS</b> FRESH DAILY <b>10¢</b> REG. PKGS. <b>\$1</b>	<b>SHOPPERS VODKA</b> 5TH <b>\$2.98</b> QUART <b>\$3.69</b> KENTUCKY ROYAL KENTUCKY WHISKEY A BLEND • FIFTH <b>\$3.19</b> BOURBON BOND BOURBON 100 PROOF KENTUCKY WHISKEY FIFTH <b>\$4.09</b>
--	---------------------------------------	-------------------------------------	---	---	---	---

LOS ANGELES Pico at La Cienega Central Avenue at 43rd Place  
S. SAN GABRIEL East Garvey at Del Mar  
LONG BEACH East Wardlow at Cerritos  
TORRANCE Pacific Coast Hwy. at Crenshaw East Carson at Main  
SAN PEDRO 25th Street at Western Ave.  
INGLEWOOD Arbor Vitae at La Cienega  
SANTA MONICA Wilshire Blvd. at Berkeley Lincoln Blvd. at Ocean Park  
WESTCHESTER Lincoln Blvd. at Manchester  
NORWALK Firestone at Studebaker  
E. LOS ANGELES 1819 1/2 First Street at the Triangle

**OPEN 9 a.m. to 10 p.m. 7 DAYS A WEEK**

**TORRANCE** PACIFIC COAST HWY. at CRENSHAW

**SAN PEDRO** 25th at WESTERN

Naturally—We Give **BLUE CHIP STAMPS**

SHOPPERS MARKETS We Give Blue Chip Stamps SHOPPERS MARKETS We Give Blue Chip Stamps SHOPPERS MARKETS We Give Blue Chip Stamps SHOPPERS MARKETS We Give Blue Chip Stamps