

SPRINGFIELD 303 CAN
APPLE SAUCE
B \$ **1**
FOR

GIANT REG. 79c
TIDE
67^c

CYPRESS GARDENS CHILLED
ORANGE JUICE
39^c qt.

SPRINGFIELD—1 GAL.
BLEACH
29^c Gal.

SHOPPING

MUCH!

COMPARE!

EMAR—1 POUND
Cheese
25^c

BEECHNUT STRAINED
BABY FOOD
10 FOR **89**^c

LARGE 42-OZ.
QUAKER OATS
39^c

GREEN GIANT FROZEN
VEGETABLES
• IN BUTTER SAUCE
• PEAS
• BEANS
• CORN
• MEXICORN
29^c

BORDEN'S
CANNED
MILK
8 FOR \$ **1**

BORDEN'S
BISCUITS
4 for
29^c

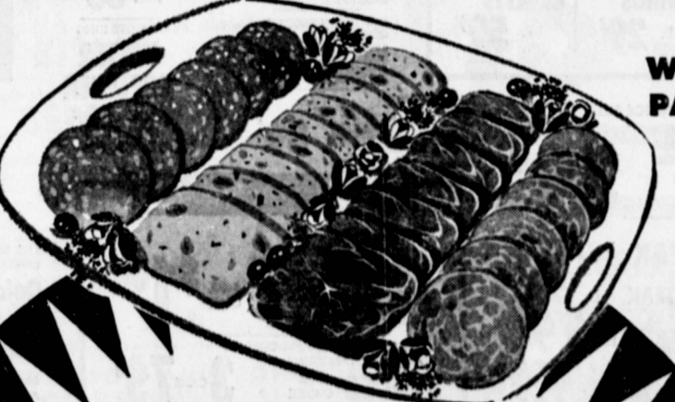
SCHILLING'S
BLACK
PEPPER
4 OZ.
29^c

SCHILLING'S
GARLIC
SALT
4 OZ.
29^c

FOLGER'S
COFFEE
59^c lb
2 lb. . . . 1.17
3 lb. . . . 1.69

LARGE AA
EGGS
39^c DOZ.

REG. 49c "TEK"
TOOTH BRUSH **2** for **49**^c
SHO-CURL—QUEEN SIZE—20-OZ.
HAIR SPRAY **79**^c
SHO-CURL—LEMON or MINT—REG. 99c
SHAMPOO **59**^c
REG. \$1.00 SIZE
BRYLCREAM **59**^c
COMMAND, REG. \$1.00
SHAVE BOMB or LOTION **59**^c
MACLEAN—KING SIZE—REG. 75c
TOOTH PASTE **49**^c



WE CASH
PAYROLL
CHECKS
FOR OUR
CUSTOMERS

MANHATTAN 6 OZ.
BOLOGNA
AND
SALAMI
19^c PKG.

U.S. NO. 1
RUSSET **POTATOES**
8 LB. CELLO **29**^c

NAVEL
ORANGES
39^c

ARIZONA
GRAPEFRUIT
8 lb. cello **39**^c

ROME BEAUTY BAKING
APPLES
3 lbs. for **25**^c

LEONARDS

EL SEGUNDO
600 N. SEPULVEDA
(3 BLKS. S. OF INTERNATIONAL AIRPORT)

TORRANCE
25405 CRENSHAW
(CRENSHAW at PACIFIC COAST HWY.)

GARDEN GROVE
12891 HARBOR BL
(3 MILES S. OF DISNEYLAND)