

# palley's

GIFTS GALORE

no mail orders, please

By **MARX**



**16<sup>88</sup>**  
THE SET

**INTERNATIONAL SPORTS CAR RACEWAY**

Thrills and excitement at the controls of this Sports Car Raceway... Features: 2 INDIVIDUAL RHEOSTAT SPEED CONTROLS, AUTOMATIC LAP COUNTER Plus a CHICANE... The narrow Chicane track will permit only one car to pass at a time... Two cars—an XKE Jaguar and a 300 SL Mercedes Benz... Complete with ELECTRIC HEADLIGHTS for thrilling nite racing.

**6 FT. ALUMINUM TWIST & CURL CHRISTMAS TREE & COLOR WHEEL**

Motorized color wheel with 150 watt reflector spotlight.

**12.88 VALUE BOTH FOR 6<sup>88</sup>**



**TOP QUALITY DELUXE 7 FT. POOL TABLE**

The super model for adults, this is not a toy!... Thick granite board braced with steel to form solid playing surface... five gum rubber cushions... specially designed carriers and side pocket backing... adhesive-type, high quality billiard cloth for wrinkle-free surface... fashioned wood legs are heavily braced and are self-leveling... Folds for storage... A "Perfect Play" Table. Complete with 15 balls, cue ball, rack and 2 48" cues.

SEEING IS BELIEVING PRICE SLASHING SCOOP! **59<sup>95</sup>** 79.95 VALUE



**GLIDE SMOOTH DRY IRON**

A new wider range of temperature settings... aluminum ironing surface... high polished sole for faster ironing.

**4<sup>88</sup>**

no mail orders, please

**HEAVY DUTY PLAY HOUSE**

HUGE 6 Ft. x 3 Ft. x 55 In. HIGH Built for generations to come... Lifetime Pressure-Coated plastic finish inside and out... will never chip or crack... weather proof Red Roof... Features Green flower Boxes that you can really play flowers in... White Canopies over the three large windows with Red trim... And Red scroll columns at the front entrance... You can cover your friends at the Yellow shell or open up a store.

**38<sup>88</sup>**  
SPECIAL

no mail orders, please

**JUST ARRIVED**

**FAMOUS LEADING BRAND**

SELLING AT \$22.88

**GOURMET ELECTRIC KNIFE**

Just press the switch... the Stainless Steel blade does the rest... with stay sharp serrated edges that remove for easy cleaning.


**16<sup>88</sup>**  
GIFT BOXED



**3 PC. CONSTRUCTION SET BY MARX**

Three heavy gauge steel construction vehicles... an 18 1/2" long Dump Truck with dump action and free rolling action... and a 17" long Power Shovel that rolls on a heavy rubber tread with a crank operated crane with scoop, lift, dump action... Plus a Road Grader with huge wheels it turns, grades and rolls... all for only

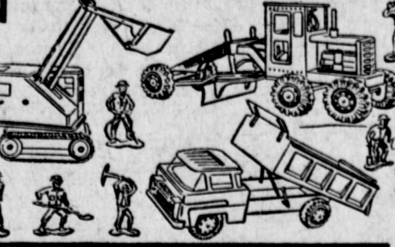
**10<sup>88</sup>**



**REMOTE CONTROLLED ELECTRIC TRAIN SET WITH DIESEL LOCOMOTIVE & AUTOMATIC COUPLER**

Now a train every child has seen... The work horse of the Round House... Your child can have hours of fun coupling and uncoupling his Diesel Electric Train by MARX... a complete 25 pc. Railroad Set... Box Car, Open Car, and a Log Car that dumps its logs into a side bin and naturally a Caboose... Plus plenty of track and a heavy duty Transformer.

**9<sup>88</sup>**  
COMPLETE 25 PC SET



**"EVEN-FLOW" STEAM-DRY IRON**

30 minutes of five steam on one 8-oz. filling... Take the fatigue out of ironing... a new wider range of temperature settings to safely protect all fabrics.

**6<sup>88</sup>**



## SAVE ON CHRISTMAS SHOPPING AT PALLEY'S



**ELECTRIC CAN OPENER**

Opens all size and shape cans... Cuts smooth safe edges... Lifts lids magnetically... With life time cutting wheel.

**9<sup>88</sup>**



**Multi-Purpose Blender**

50 Dance—2 speed by La Bell... chops, grinds, blends, liquefies, mashes, creams & whips. GIGANTIC SAVINGS

**11<sup>88</sup>**



**AUTO. POP-UP TOASTER**

Color control dial... hinged crumb tray... Sta-Cool handles... Polished chrome top and satin chrome bottom.

**6<sup>88</sup>**



**3-Spd. Deluxe Hand Mixer**

Mix, Beat, Mash and Blend... powerful motor won't stall... Push-button control to release beaters automatically.

**7<sup>88</sup>**



**ELECTRIC CAN OPENER**

Smartly styled in gleaming white and chrome... opens any size or shape can... powerful magnet automatically holds lid.

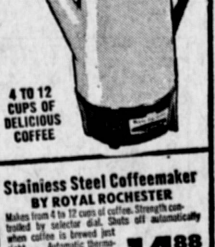
**5<sup>88</sup>**



**STEAM-SPRAY-DRY IRON**

The correct amount of steam PLUS a fine Water Spray and quick-dry ironing... Exclusive ACCU-STEAM provides the correct amount of steam for each fabric setting and scientifically set steam vents for even distribution.

**12<sup>88</sup>**



**Stainless Steel Coffeemaker BY ROYAL ROCHESTER**

Makes from 4 to 12 cups of coffee. Strength controlled by selector dial. Shuts off automatically when coffee is brewed just right... Automatic thermostat keeps proper serving temperature indefinitely.

**14<sup>88</sup>**

## GIANT DISCOUNTS AND GREATEST SAVINGS

no mail orders, please

**SAVE NOW! ELECTRIC BLANKETS**

Completely washable! U.L. approved... Uses 20% less electricity than older models... lovely nylon binding, moth-proofed and non-allergenic.

DOUBLE BLANKET SINGLE CONTROL **7<sup>88</sup>**  
DOUBLE BLANKET DUAL CONTROL **10<sup>88</sup>**

**"BALLERINA" HAIR DRYER**

Hat box style hair dryer... Beautiful for use at home or to carry while traveling... the Ballerina Has two comfortable temperatures & an extra large hood... an ideal gift for the new year ahead.

**10<sup>88</sup>**



no mail orders, please

**12 1/2" PORTABLE SPEAKER**

You can have music wherever you roam... this double speaker is easily attached to your Stereo... radio... and makes a transistor radio sound like a symphony orchestra... move from house to yard

**1<sup>99</sup>**  
EACH



no mail orders, please

**GIANT VALUE HOUSE TRIMMING CHRISTMAS DECOR LIGHTS**

Safe, Brilliant, Long Lasting parallel indoor and outdoor lights... Approved. SET OF 25 OUTDOOR LIGHTS (BULK PACK)

**2<sup>99</sup>**



no mail orders, please

**OUTDOOR SANTA WITH REINDEER**

Santa in his sled... pulled by four of his sturdy reindeer... made of a new, tough, resilient styrofoam... for indoor or outdoor use... Reindeer, 25" tall... sled, 33" long... OVER-ALL LENGTH A L-O-O-N-G 10 1/2 FT.

**9<sup>88</sup>**  
COMPLETE



no mail orders, please

**CHRISTMAS DECORATIONS**

At Palley's you will find the New, The Novel, The Rich and The Different... Inside and outside your house will glow with the Christmas Spirit... Here are just a few... Glowing 23" Jewel Cone Trees... A 38" Spiral candle and a 44" Lamp Post with cord and bulb fixtures... An 18" illuminated Nativity set with Mary, Joseph, Christ Child and Crib... 22" Boy and Girl Angels with cord and bulb fixtures.

A. CONE TREE **14<sup>88</sup>**  
B. BOY & GIRL ANGEL **3<sup>88</sup>**  
C. LAMP POST **4<sup>88</sup>**  
D. SPIRAL CANDLE **3<sup>88</sup>**

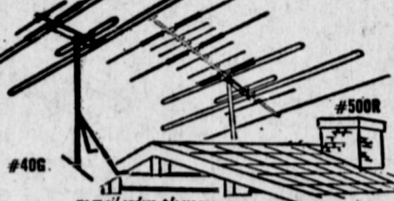


no mail orders, please

**ALL CHANNEL & COLOR TV ANTENNA**

If you are going to get a new TV for Christmas... in Color or Black & White you will want the best in reception... Here it is... Gold tone in color for best reception... All parts for complete installation...

#406 ANTENNA, 15.95 Value ..... **8.88**  
#500R ANTENNA, 44.95 Value ..... **17.88**




no mail orders, please

**Port. Venturi Design Elec. Fan Heater**

COMPACT... SAFE... lightweight and easy to carry... portable comfort for any room... Safe even if accidentally tipped over... The case always remains cool to the touch... U.L. approved... SPECIAL!

**6<sup>66</sup>**



no mail orders, please

**Automatic Heater... Case Stays Cool**

Dual instant heat... 1320 Watts and 1600 Watts... Push button switch... Automatic Fan heat... Thermostat controlled... Safety flip over switch which instantly turns off heater if turned over... DISCOUNT PRICE

**16<sup>88</sup>**



**ADD LIVING SPACE ANYPLACE**

**8 OZ. FIBERGLASS PANELS**

A Shoji Screen... a Room Divider... a partition, wonderful space-expanding, decorative ideas all easy to create... these costs allow you economically to renovate the modern advances in ceiling cover... for natively diffused light free of glossy shadows... Choose from decorative tones such as Tangerine, Shamrock, Canary, Dusty Peach, Snow, Turquoise, Emerald, Coral, Jade, Clear and White, all in translucent colors... available in roll and flat... in sturdy 8 oz. fiberglass.

Because we are premier fiberglass merchandisers, we were again given the most fabulous deal that enables us to pass on savings of 60% and more.

OUTDOORS: Patio Roofs • Carpets • Pool Enclosures • Fences • Awnings • Greenhouses. INDOORS: Luminous Ceilings • Room Dividers • Tub Enclosures • Partitions • Counter Fronts • Entrance Panels.

Complete range of sizes available

**24<sup>88</sup>**  
NOW SQ. FT.



no mail orders, please

**ONCE AGAIN PALLEY'S INTRODUCES A NEW PRODUCT MATRICULATED PAL-BORD PANELING**

A new space age process produces this new marvel wood... Under tremendous pressure fine hardwood particles are mixed and compressed with Vinyl and Epoxy Resin binders... making panels that have 25% greater density than other panels... creating a panel that has greater fire resistance, dent resistance, and has greater surface and color longevity... is easily washed... and is "kid" proof... And given beautiful wood tones of: DESERT OAK, NUTMEG WALNUT, CATHEDRAL CHERRY AND CARAVAN CHERRY, to make interior walls that are breathlessly beautiful... 1/4"x4"x8" PANELS... MORE THAN COMPARE IN QUALITY WITH PANELS THAT COST \$18.00 TO \$12.00.

**SAVE NOW AS NEVER BEFORE**

**4<sup>88</sup>**  
1/4"x4"x8" PANELS



no mail orders, please

**1 1/4 H.P. 7" ELECTRIC SAW WITH MIRROR FINISH**

Famous Flame Brand... Universal Motor, develops up to 1 1/4 H.P. maximum depth of cut, 2-9/16"... angular adjustment 0 to 45"... 2 1/2" depth of cut at 45"... 7" combination blade... Self-lubricating bronze bearings... 115 AC-DC... no load speed - 5000 RPM.

**19<sup>88</sup>**

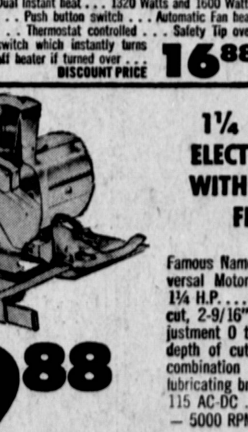


no mail orders, please

**THERMOSTAT CONTROLLED FOOD WARMER TRAYS**

Just the thing for hot party tid-bits or everyday use... Steel surface coated in a smart gold fleck design... will not chip or flake... stain resistant... handles are heat-resistant... detachable 6-ft. cord.

**5<sup>88</sup>**



no mail orders, please

**1/2-IN. HEAVY DUTY DRILL**

An industrially rated drill with extra power for any job... full load 6 amp. rating... 115 volt, 50-60 cycle... AC-DC motor... locking switch... bright aluminum die cast housing... 2-position detachable auxiliary handle... 3 conductor power cord... geared key chuck with holder... capacity: 1/2" in metal, 1 1/4" in wood and 3" hole saw... no load speed... 550 R.P.M. #70124

**19<sup>88</sup>**

Also available... electrically reversible drill... #70128 **21<sup>88</sup>**



no mail orders, please

**ELECTRIC SANDER**

Easy grip handle... grey phenolic housing... 3"x6"x1/4" sponge sanding pad... 3 sandpaper clamps on without extra tools... finger-tip switch... powerful vibrator motor produces 14,000 strokes per minute...

**5<sup>88</sup>**



no mail orders, please

**PORTABLE MITRE TOOL**

Provides mitre cuts of professional quality... can be used with any ordinary hand saw... wing nut locks at angle desired... manufactured from heavy gauge C.R. steel... electro galvanized finish... accurate die cut graduations...

**98<sup>88</sup>**  
GIFT BOXED



no mail orders, please

**BENCH GRINDER**

Has a fine and a coarse grinding wheel 4 1/2" x 1/2"... die cast aluminum housing... correct grinding speed of 3500 RPM... equipped with work light... adjustable tool rests... eye shields for safety.

**13<sup>88</sup>**  
ONLY

