

10-OZ. PACKAGE
ISQUICK

37^c

KERN'S 46-OZ. TOMATO
JUICE

51 \$
FOR

LARGE AA
EGGS

39^c DOZ.

IMPERIAL DINERS
TV DINNERS

29^c LB.

PING

**
UCH!

COMPARE!

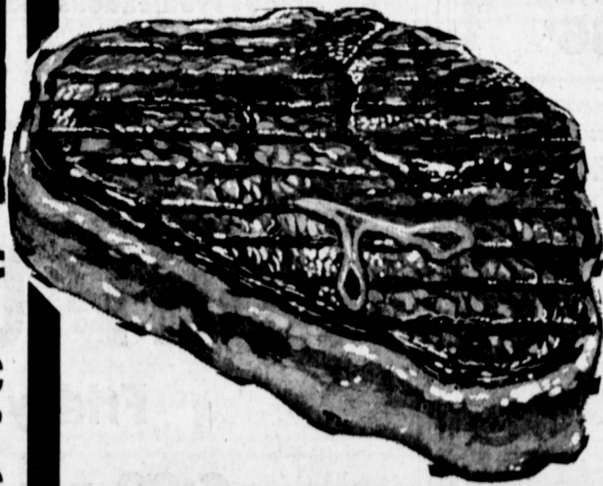


"CHOICE"
CHUCK ROAST
37^c LB.



U.S.D.A. "CHOICE"
PRIME RIB
69^c LB.

**SALE OF FINEST
USDA
CHOICE
TENDER!
DELICIOUS!**



**CHUCK
STEAKS**
37^c Lb.

**EZER
BEEF
BUYS**

WRAPPED FREE!
TENDER
Chuck Roasts, Boneless
New Beef and Ground
178 lbs. **39**^c lb.
Steaks, Stew Meat and
Weight 325 lbs. **49**^c lb.
TENDER
Porterhouse Steaks,
New York, N.Y. Cut Steaks,
Approximate Weight 160 lbs. **59**^c lb.
RIB **69**^c lb.
INCLUDES: T-Bone
Top Sirloin, N.Y. Cut
Approximate Weight 50 lbs. **89**^c lb.
BUNS INCLUDES:
Boneless Stew Beef and
Weight 50 lbs. **59**^c lb.

GROUND FRESH DAILY
Ground BEEF 3 LBS 99^c
LEAN AND TENDER
STEW BEEF 69^c lb.
TASTY AND DELICIOUS
PICNICS 29^c lb.



**FARMER JOHN
BACON**

49^c LB.

U.S.D.A. GRADED
"CHOICE"
**O-BONE
SWISS
STEAK**

59^c LB.

U.S.D.A. "CHOICE"
**BONELESS
STEAKS**

• CLUB
• CUBE
• Breakfast
YOUR
CHOICE **89**^c LB.

U.S.D.A. "CHOICE"
**BONELESS
ROASTS**

ROLLED
CHUCK
OR
ROLLED
CLOD **69**^c LB.

LEONARDS

EL SEGUNDO
600 N. SEPULVEDA
(3 BLKS. S. OF INTERNATIONAL AIRPORT)

TORRANCE
25405 CRENSHAW
(CRENSHAW or PACIFIC COAST HWY.)

GARDEN GROVE
12891 HARBOR BL.
(3 MILES S. OF DISNEYLAND)