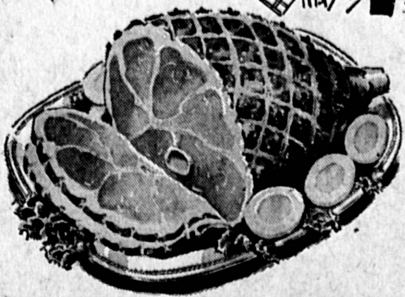




IT'S PICNIC TIME

THE BOYS WILL BE OPEN
MEMORIAL DAY—THURS. MAY 30
 The Crenshaw, Hawthorne, Vermont, Long Beach & Norwalk will be open the regular hours—All other Boys Markets will be open 9 A.M. to 7 P.M.



Home
FULL SHANK HALF
 FARMER JOHN EASTERN
 TENDER SMOKED

35^c
 lb.

FARMER JOHN EASTERN TENDER SMOKED

WHOLE HAM 39^c lb.
BUTT END HAM 45^c lb.
HAM SLICES 79^c lb. CENTER CUT

—U.S.D.A. GRADED CHOICE STEER BEEF—

GROUND CHUCK Fresh Lean **49^c** lb.

TENDER, JUICY CHUCK

POT ROAST 29^c lb.

7-BONE BEEF ROAST 39^c lb. Center Cut

GROUND ROUND Fresh Lean **65^c** lb.

ENGLISH-CUT ROAST 79^c lb. TENDER, JUICY, BONELESS

STANDING PRIME RIB ROAST 69^c lb. Tender, Tasty, Small End

SLICED HALIBUT Fresh Frozen Northern **49^c** lb.

RIB STEAK 79^c lb. TENDER, JUICY, TRIMMED-RITE

SWISS STEAK 59^c lb. Thick-Cut Bone-in

FOLGER'S
COFFEE
 1 lb. Can **55^c**

VAN CAMP'S PORK 'N
BEANS
 5 NO. 2 1/2 CANS \$1

C-H-B SALAD
OIL
 24-oz. Bottle **23^c**

HALFHILL CHUNK
TUNA
 Light Meat 6 1/2-oz. Can **19^c**

LIBBY'S FROZEN ASSTD.
DRINKS
 6-OZ. CAN **10^c**

SUPERIOR PAPER
PLATES Pkg. of 100 **79^c**
 CUT-RITE **WAX PAPER** 125-Fr. Roll **25^c**
 HAWAIIAN RED, YELLOW OR HULA HIGHBALL **PUNCH** 3 46-oz. Cans **\$1**

PIEBOY ASSTD. CREAM
PIES
 FRESH-FROZEN 16-OZ. PKG. **29^c**

MA BROWN'S **RELISH** • HAMBURGER • HOT DOG • SWEET • 13-OZ. JAR **29^c**
 MOREHOUSE EL REY **MUSTARD** Quart Jar **23^c**
 HOLIDAY KOSHER OR REG. **DILL PICKLES** 22-oz. Jar **29^c**

ASST. BEVERAGES
SUPER COOLA
 12 12-oz. Cans **\$1**

HEINZ STRAINED
BABY FOOD
 10 4 1/4-oz. Jars **89^c**

COOK-OUT
BRIQUETS
 5-lb. Bag **29^c**

PREPARED FOODS TO GO
FRIED CHICKEN Featuring the New Flavor Crisp Method BY THE PIECE
 • DRUMSTICK & THIGH **33^c** ea.
 • BREAST & WING **29^c** ea.

GOLDEN VELVET
BEER
 Case of 24 12-oz. Cans **\$2.98**

Junior Department Store
 11 1/2-OZ. GLASS MODERNISTIC DESIGN
WATER TUMBLERS
 REG. 15c EA. **12** in a Ctn. for **99^c**

Fresh-Frozen Foods
FEILER'S DINNER PATTIES BEEF & VEAL 3 12-oz. Pkgs. of 4 Patties Each **\$1**
 ROSARITA
 • CHEESE ENCHILADA 12-oz. Pkg. **29c**
 • COMBINATION PLATE 12-oz. Pkg. **39c**
 • MEXICAN DINNER 16-oz. Pkg. **49c**
 • BEEF ENCHILADA DINNER 14-oz. Pkg. **49c**
 ROSELLA **CREAM CHEESE PIES** 16-oz. Pkg. **49^c**

GOLD MEDAL
FLOUR
 5-lb. Bag **57^c**
PRELL CONCENTRATE SHAMPOO Med. Size (Reg. 60c) **51c**

Fabulous Delicatessen
BALLARD or PILLSBURY BISCUITS 3 Cans of 10 **25^c**
PLUMROSE PICNICS IMPORTED DANISH READY-TO-SERVE NO WASTE 1-lb. 2-Can **\$1.69**
PASTRAMI VIENNA SLICED 4-OZ. PKG. **39^c** ea.

QUEEN SIZE, ASSTD. DESIGNS
LAP TV TRAYS With folding brass legs. Use as a TV or Bed Tray **88^c** ea.

3' x 5' UNITED STATES **FLAG KIT**
 COMPLETE WITH 6-FT. ALUMINUM POLE AND MOUNTING BRACKET
 \$5.00 VALUE **\$2.79**

Fresh Fruits & Vegetables
BARE ROOT ROSES
 CALIF. GROWN 2-YR. OLD PLANTS 20 VARIETIES TO CHOOSE FROM GUARANTEED TO BLOOM THIS YEAR **29^c** ea.

Boys Bottle Shop
 100% GRAIN NEUTRAL SPIRITS—80 PROOF
DANUBE VODKA Full Fifth **\$2.98** Full Quart **\$3.79**
 READY-MADE COCKTAILS BY PUMP ROOM
 • SCREWDRIVER Full **\$1.99**
 • GIMLET Quart
 • DAIQUIRI
 • MARGUERITA
 100 Proof Bourbon—Bottled in Bond
BOURBON RARE Full Fifth **\$4.29**

COLORFUL PLASTIC... REG. 25c EA.
FOOD CONTAINER With Lid **2 FOR 25^c**

SWEET, VINE-RIPENED
CANTALOUPE 4 FOR **\$1**

Daisy
TOILET TISSUE
 2 Roll Pak **25^c**

IN LOS ANGELES SHOP AT:
 * 120th and Vermont
 * Florence and Figueroa
 * Crenshaw and Rodeo
 * Vermont and Slauson
 * Pico and Arapahoe
 * 47th and Broadway

OTHER BOYS MARKETS IN SOUTHERN CALIFORNIA
 * DOWNEY, 12270 Paramount
 * FULLERTON, N. Raymond & Commonwealth
 * GARDENA, Redondo Beach and Van Ness
 * HAWTHORNE, 118th St. and Hawthorne
 * LA MIRADA, Imperial and Luitwieler
 * HIGHLAND PARK, Ave. 56 and Monte Vista
 * LAKEWOOD, Lakewood Center
 * LONG BEACH, 3750 E. Anaheim

* MONTEBELLO, Beverly and Wilcox
 * NORWALK, Pioneer and Alondra
 * POMONA, Holt and Indian Hill
 * REDONDO, Manhattan Beach and Inglewood
 * SAN FERNANDO, Glen Oaks and Hubbard
 * SAN GABRIEL, Valley and Del Mar
 * TORRANCE, Normandie and Carson
 * WILMINGTON, Avalon and Anaheim

AD GOOD 7 FULL DAYS THURS. MAY 23 THRU WED. MAY 29

BLUE CHIP STAMPS

The **Boys** MARKETS