



BRANDS YOU KNOW AT THE PRICES YOU WANT!



PLUS BLUE CHIP STAMPS

MAYONNAISE
BEST FOODS

QUART JAR

48^c

LIBBY'S
TOMATO JUICE

5 ^{Big} 46-oz. Cans **\$1**

COLORED OR WHITE
SCOT-TISSUE

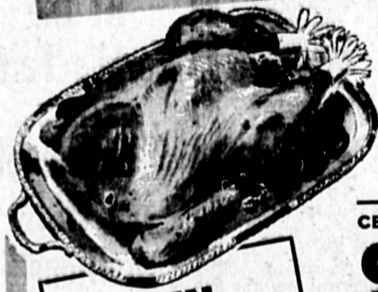
REG. ROLL

10^c

STOKELY
TOMATO SAUCE

8-oz. Cans

3 **19^c**



TURKEYS

PLUMP-TENDER OVEN READY...

TOMS

FRESH-FROZEN YOUNG, MEATY OVEN-READY GOVT. INSPECTED

29^c lb.

HEN TURKEYS

Fresh Frozen Plump, Meaty, Young, Oven-Ready **39^c** lb.

CENTER-CUT, TENDER TASTY

CHUCK STEAK U.S.D.A. Choice **39^c** lb.

THICK-SUT BONE IN

SWISS STEAK U.S.D.A. Choice **59^c** lb.

BONELESS ENGLISH-CUT

FAMILY STEAK U.S.D.A. Choice **79^c** lb.

BONELESS TENDER **BEEF ROAST**

U.S. Choice **79^c** lb.

BONELESS, CUT-UP **STEWING BEEF**

U.S. Choice **79^c** lb.

LANCASTER FARMS **ROASTING CHICKENS**

Calif.-Grown (Slight Skin Tears) **39^c** lb.

RATH'S BLACKHAWK **SLICED BACON**

55^c lb.

Wilson's Corn King **SLICED BACON**

49^c lb.

SEA-FOOD SPECIALS

FROZEN NORTHERN **SLICED HALIBUT** **69^c** lb.
FRESH FROZEN SLICED **RED SALMON** **89^c** lb.

BLUE BONNET **OLEO**

1-lb. Pkg.

25^c

PEANUT BUTTER

SKIPPY 12-OZ. JAR **39^c**

SCOTTIES TISSUES 2 Boxes of 200 **25^c**

VAN CAMP TAMALES 15-oz. Can **29^c**

Libby's Fresh Frozen **MEAT PIES**

• CHICKEN • TURKEY • BEEF 6 8-oz. Pkgs. **\$1**

Cypress Gardens Frozen Pure Florida **ORANGE JUICE**

New Size Makes Quart 3 8-oz. Cans **\$1**

Nestle's Chocolate **QUIK**

FEATURED ON KTVU—CHANNEL 11 2-lb. Can **89^c**

IDA PACK FROZEN **CRINKLE CUT POTATOES**

1-lb. Pkg. **25^c**

CAMPBELL'S VEGETABLE **SOUP**

8 10 1/2-oz. Cans **\$1**

ROYAL HOST CATERING **ICE CREAM**

All Flavors 1/2 Gal. Ctn. **59^c**

Fabulous Delicatessen

GRAND TASTE TENDER JUICY **WIENERS** **39^c** lb.

Full Cream Nutty Flavor **SWISS CHEESE** By the Piece **59^c** lb.

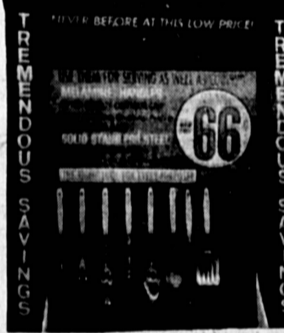
Grand Taste Fresh **LIVER SAUSAGE** By the Piece **33^c** lb.

ROYAL GARNET FROZEN **GRAPE JUICE**

6 6-oz. Cans **\$1**

NABISCO HONEY MAID GRAHAM **CRACKERS**

1-lb. Pkg. **33^c**



KITCHEN TOOLS

BLUE FLORAL DESIGN MELAMINE HANDLES STAINLESS STEEL START YOUR SET NOW 8 ITEMS AVAILABLE PLUS HANGING RACK

66^c ea.



TENNIS RACQUET

• HI TEST NYLON STRUNG • LAMINATED HARD-WOOD FRAME • GENUINE TOURNAMENT GRIP

\$1.33 While They Last!

LADIES BEACH or PLAY **SANDALS**

Vinyl With Wedge Rubber Sole Assrt. Styles & Colors Reg. 98c **66^c** Pr.

Yuban COFFEE

1 lb. Can **69^c** 2-lb. Can **\$1.37**

STOKELY'S HALVES OR SLICES CLING **PEACHES**

4 No. 2 1/2 Cans **\$1**

NABISCO COOKIES **HYDROX**

16-OZ. PKG. **49^c**

PILLSBURY **FLOUR**

5-lb. Bag **49^c**

Fresh Fruits & Vegetables

BANANAS

FIRM, RIPE CENTRAL AMERICAN **2 LBS. FOR 25^c**

CARNATION EVAPORATED **MILK**

2 Tall Cans **27^c**

CUCUMBERS

FRESH-PICKED LONG, GREEN **10^c** lb.

ORANGES

SWEET JUICY VALENCIA **3 lbs. for 39^c**

SANITARY NAPKINS **MODESS**

Incl. 7c Off Box of 24 **79^c**

AD GOOD 7 FULL DAYS THURS. MAY 16 THRU WED. MAY 22



IN LOS ANGELES SHOP AT:
* 120th and Vermont
* Crenshaw and Redeo
* Vermont and Slouson
* Pico and Arapahoe
* 47th and Broadway
* Florence and Figueroa

OTHER BOYS MARKETS IN SOUTHERN CALIFORNIA
* DOWNEY, 12270 Paramount
* FULLERTON, N. Raymond & Commonwealth
* GARDENA, Rodondo Beach and Van Ness
* HAWTHORNE, 118th St. and Hawthorne
* LA MIRADA, Imperial and Luitwieler
* HIGHLAND PARK, Ave. 56 and Monte Vista
* LAKEWOOD, Lakewood Center
* LONG BEACH, 3750 E. Anaheim

* MONTEBELLO, Beverly and Wilcox
* NORWALK, Pioneer and Alondra
* POMONA, Holt and Indian Hill
* REDONDO, Manhattan Beach and Ingewood
* SAN FERNANDO, Glen Oaks and Hubbard
* SAN GABRIEL, Valley and Del Mar
* TORRANCE, Normandie and Carson
* WILMINGTON, Avalon and Anaheim

