

El Camino Tests Surprising Grid Strength

El Camino College's 1963 football fortunes will be brought partially into focus Saturday as the Warriors entertain their traditional rivals—the Alums—in an 8 p.m. scrimmage at newly-enlarged Murdock Stadium.

Coach Ken Swearingen's crew gave notice last Saturday

that it may be the biggest junior college sleeper in the nation as it held highly-touted Glendale College to a 6-6 tie in a controlled scrimmage.

Glendale and Long Beach City College have been the pre-season choices for a West Coast Junior Rose Bowl bid, but the Redskins gave definite

notice they will be a threat for the Metropolitan Conference crown and a possible Bowl invitation.

THE 34-MAN Tribe Alum squad, under the tutelage of ECC-UCLA star Preston Dills, will return to challenge this year's hopefuls.

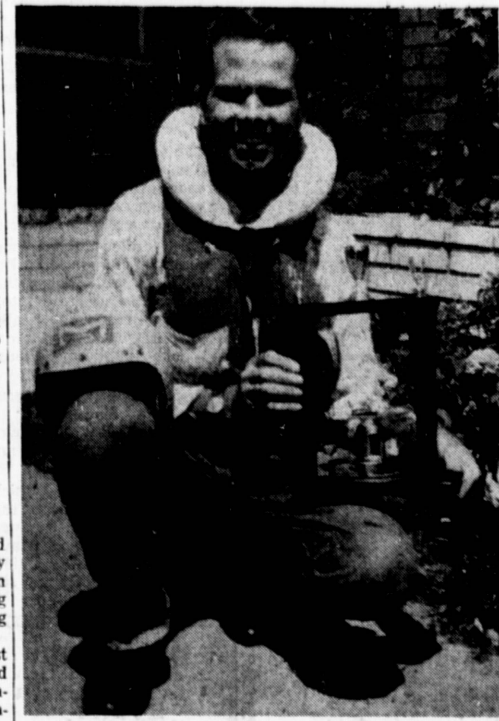
Among Warrior luminaries who will return for the fray will be Bob Beathard, whose quarterbacking is expected to provide a strong plank in the "Senior Citizen" platform.

OTHER WARRIOR standouts of past years will include backs Jim Turner, Charles Olsen, Bob

Pier, Bob Hunter and Lou Rizzo, 1961; Laddie Conger, Dick Freudenthal, Jack Lee and Gary Kimbrell, 1958; Ron Goodrich and Glen Kezar, 1959; Bill McKinney, 1954; Dick DeArmitt, 1957; and Don Lauria, 1952.

Returning at center will be Jim James, 1962. Veteran guards include Ricardo Reel, 1950; Peter Yandric, 1961; Bob Winters and Ed Jauregui, 1959; Brian Ogden, 1958. Dave Fisher, 1960, and Larry Bender, and Bob Clark, 1956.

PROBABLE tackles are Dills, 1953; Kendall Russett and Ernie Reid, 1962; John Bishop and Ted Burt, 1958; and Jack Henderson, 1961.



RECORD HOLDER... Jack Ehlen of Torrance displays a trophy recently presented to him for setting a new world's record in North American Hydro-Kart Assn. competition in Bakersfield. Ehlen, who will race again at Hansen Dam in October, covered a one-mile course in 2:03 to establish the mark on Ming Lake. He drove a Fury Hydro-Kart equipped with a McCulloch Hydro-Mack outboard.

Sid Payne Slight Pick For Crown

Motorcycle racing's brightest new star will go postward as the favorite Saturday night at Ascot Park against the finest riders in the nation in the American Motorcycle Association's 50-lap Grand National steeplechase championship.

Bakersfield's Sid Payne, a four-time Ascot winner this year, will lead the first four ranked steeplechasers over the Gardena circuit in qualifying runs tomorrow night.

Qualifying for expert and amateur riders will be held tomorrow night along with a complete twist and turn program for novice jockeys.

PAYNE CAME to California from Oklahoma eight years ago with only the shirt on his back and now owns and operates a fleet of trucks in his home town. He hit the big time last month at Peoria, Ill., where he captured the AMA's big bore TT nationals.

Last weekend, Payne added the Central California championship to his growing trophy case.

THE ENTRY list includes the leaders for the 1963 Grand National Championship: Dick Mann, California; George Roeder, Ohio; Larry Williamson, Illinois; and Ralph White, San Diego, the top four rated drivers at the end of the 1962 season, are entered.

Coast Guard To Sponsor Sea Course

Flotilla 65 of the United States Coast Guard Auxiliary will hold a public instruction course in small-boat handling and seamanship beginning Sept. 18 in Hermosa Beach.

The free course will consist of 12 lessons and will be held in the Hermosa Beach Recreation Department administration building, 1035 Valley Drive.

Courses will be held on 12 successive Wednesdays and will meet at 7:30 p.m. Further information may be obtained by calling either Davis 3-4430 or FRontier 6-4724.

Torrance Cindermen In Opener

New Torrance High cross country mentor Duane Lemon predicts a solid second place finish for the Tartar harriers in the realigned Pioneer League this year.

Lemon will replace Joe Sarthou as head cross country and track coach at THS. Sarthou departed for a similar position at La Puente High School.

Also departed are last season's two big Tartar distance runners, Ivor Sampson and Dennis Dyer paced Torrance to a middle-of-the-league finish last season but have left for the University of California.

Comprising the 1963 team will be Larry Parker, senior; Keith Bleakley, junior; Richard Sleek, senior; Mike Thomas, freshman, and Earl Gardner, junior.

Aviation, minus only one of its top runners from last year, is Lemon's choice to pick up the Pioneer crown. Torrance should be second if Lemon's prognostications are accurate.

Torrance will open its season tomorrow at 3 p.m., traveling to North High for a non-league engagement.

NHS Runs For Crown

Chances of a North High cross country championship in the new Sky League were touted as a distinct possibility this week by head Saxton coach Howard Smith.

Although North is minus a single letterman in its top seven runners, Smith feels only Morningside and possibly Inglewood will stand in the Saxons' path.

Last year, North gained only two wins. The Saxons owned this season's campaign with a meet against West High yesterday and will host Torrance High tomorrow afternoon. Next Tuesday, the Saxons will tangle with South High at Centinela Park in Inglewood.

Filling the top seven running positions for North are Gordon McBeath, junior; Tom Foley, sophomore; Bob Hansen, junior; Dave Ramsey, senior; Larry Reina, senior; Alex Mendoza, sophomore; and Dan LaCoe, senior.

Support Your Church CHURCH CALENDAR

<p>NATIVITY CATHOLIC CHURCH 1417 Inglewood Ave., Torrance Rev. John P. Cronin, Pastor MASS SCHEDULE Sundays: 6, 7, 8, 9, 10, 11 A.M. and 12:15 P.M. St. Joseph's at 9:30 A.M. SATURDAY CONFESSIONS 10:30 to 11:30 A.M.; 4 to 5 P.M.; 7:30 to 9 P.M. St. Joseph's at 7:15 P.M. BAPTISTS Every Sunday at 1:45 P.M.</p>	<p>CHRIST THE KING LUTHERAN CHURCH 2706 W. 182nd St., Torrance Marvyn V. Midburn, Pastor Phone Davis 3-6821 Res. Davis 3-5435 Divine Worship, 8:30 a.m. Sunday School, 9:45 a.m. Divine Worship, 11:00 a.m. Nursery care provided at both services. Reading Room—1406 Cravens Open 10 a.m. to 5 p.m. daily except Sunday and Holidays. Also 7 to 9 p.m. Monday and Friday evenings. All are welcome to attend our services and to see our Reading Room.</p>	<p>FIRST CHURCH OF CHRIST, SCIENTIST 218th St. and Main St., Torrance, Calif. Church Services—11 a.m. Wednesday Eve Meetings—8 p.m. Sunday School— 9:15 a.m. and 11:00 a.m. Children under 10 years of age must be accompanied by parent or guardian for enrollment. Reading Room—1406 Cravens Open 10 a.m. to 5 p.m. daily except Sunday and Holidays. Also 7 to 9 p.m. Monday and Friday evenings. All are welcome to attend our services and to see our Reading Room.</p>
<p>SOUTH BAY BAPTIST CHURCH 4865 Sharyne Lane Torrance Pastor, Dr. J. C. Brumfield Phone FRontier 3-8433 Sunday School... 9:30 A.M. Morning Worship... 10:45 A.M. Junior Church... 10:45 A.M. Baptist Training Fellowship... 5:00 P.M. Evening Worship... 7:00 P.M. WEDNESDAY Bible study and prayer 7:00 P.M. Choir Rehearsal... 8:00 P.M. Modern crib nursery and toddler care provided at stated church services. Sunday School Bus transportation schedule, FRontier 3-3433.</p>	<p>DEL AMO SOUTHERN BAPTIST CHURCH 3915 W. 226th at Ocean Torrance Sunday School—9:45 A.M. Training Union—4 P.M. Worship Services—11 A.M.—7 P.M. Wednesday—Midweek Services: G. A. & R. A. Auxiliaries— Teachers 7 P.M. Prayer Service—7:45 P.M. Choir Rehearsal—8:30 P.M. Pastor—Daniel H. Weaver Jr. FR 1-3925</p>	<p>CENTRAL CHURCH EVANGELICAL UNITED BRETHREN Marcelina & Arlington Rev. Walter M. Stanton PA 8-2010 9:30—Sunday School 11:00—Morning Worship 4:30—Youth Fellowship 7:30—Evening Worship Midweek Worship Service 7:00 Wednesday Evening</p>
<p>FOUR SQUARE GOSPEL CHURCH Corner Arlington and Sepulveda Tel. DA 6-2072 Rev. and Mrs. Paul F. Lewis SUNDAY: Sunday school 9:30 a.m. Morning Worship 10:45 a.m. Group Services 6:30 p.m. (Y.P., Cadets, Defenders) Evangelistic 7:30 p.m. MIDWEEK Wednesday—Bible Study at 7:30 p.m. PUBLIC INVITED</p>	<p>SEVENTH-DAY ADVENTIST Corner of Acacia and Sonoma Marion Metcalf, Pastor 21529 Dolores St., Torrance Phone: 839-0904 Church Office—FA 8-1540 Saturday—9:30 A.M. Church Services—11 A.M. Wednesday—7:30 P.M. Prayer Meeting—7:30 P.M. Friday—Youth Meeting—7:30 P.M.</p>	<p>FIRST CHRISTIAN CHURCH OF TORRANCE (Disciples of Christ) 2939 El Dorado, Torrance Rev. H. Milton Sippel, Pastor Res. Phone FA 8-4583 Phone 220-4181 Two Sessions of Church School and Morning Worship, 9:30 and 11:00 a.m. Nursery provided at both sessions. Christian Youth Fellowship—7 p.m.</p>
<p>HOPE CHURCH EVANGELICAL UNITED BRETHREN 3341 Artesia (W. 174th St.) Rev. Ronald Bergeson Res. DA 9-3542 8:30 a.m.—Morning Worship 9:30 a.m.—Sunday School 11:00 a.m.—Morning Worship 6:00 p.m.—Youth Fellowship 7:00 p.m.—Evening Worship Bible Study and Prayer Meeting Wednesday, 7:30 Nursery care provided for the morning services. DA 3-1012</p>	<p>ROLLING HILLS COVENANT CHURCH 2221 Palms Verde Dr. No. Phone DA 5-1594 Robert A. Honnette, Pastor Residence Phone 326-8401 Sunday School 9:45 a.m. Classes for all ages and interest groups. Morning Worship 11:00 a.m. Evening Service at 7:00 p.m. Youth groups for Junior and Senior High School Youth at 6:00 p.m. Nursery and Children's church services each Sunday.</p>	<p>FIRST LUTHERAN CHURCH 1625 Flower Street Phone 220-4181 William J. Rolander, Pastor Phone FA 8-3249 Phillip C. Hiller, Assoc. Pastor Phone 679-7710 8:00 & 10:45 a.m.—Worship Service 8:45 & 9:45 a.m.—Sunday School Children and Adults. 10:45 a.m.—Worship Service (Nursery at 10:45 Service) Holy Communion—First Sunday Luther League—2 and 4th Sundays Christian Elementary School—Kindergarten through 7th Grade</p>
<p>FIRST BAPTIST CHURCH at Carson & Manuel St. Torrance, Calif. Phone FA 8-5030 Rev. Robert Bohart, Pastor SUNDAY—Morning Services 8:15 A.M.—10:45 A.M. Sunday School 9:15 for Nursery thru Juniors, College and Adults 10:45—Jr. High and High School Fellowship Training—6:15 P.M. Evangelistic Messages—7:00 p.m. WEDNESDAY—Bible Study 7:30 P.M. Communion Service and Prayer Nursery provided for all services. Also sound proof mother's room. ALL WELCOME</p>	<p>ST. ANDREW'S EPISCOPAL CHURCH 1432 Emerald St. FA 8-3781 Rev. Hugh R. Percy, B. A., B.D., Rector 7:30 a.m. Holy Communion 9:15 a.m. Family Worship Service followed by Church School and Coffee Hour 11:00 a.m. Morning Worship (Choral Eucharist on 1st and 3rd Sundays) (Child care and Nursery provided at 9:15 and 11 a.m. services) Weekdays: Holy Communion at 11 a.m. Thursdays and 4:30 a.m. on All Saint's Days</p>	<p>FIRST CHURCH OF THE NAZARENE 1501 West Carson R. Wallis Konegay, Pastor Ph. FA 8-4680 9:45 Sunday School 10:30 Morning Worship 7:00 p.m. Evening Service</p>
<p>GREYFRIARS MEMORIAL PRESBYTERIAN (Orthodox) 22511 South Figueroa, Torrance Worship hours 11 a.m. and 7:30 p.m. Every Sunday Sunday School at 10 a.m. Young People's Fellowship 6 p.m. Prayer Meeting every Wednesday Evening at 7 o'clock Rev. William J. Romer, Pastor Mr. Richard Gorum Sup. of Sunday School Thomas Millard Director of Choir</p>	<p>FIRST METHODIST CHURCH Torrance Carson at 15 Prado Phone: FA 8-2342 Rev. Arthur Nagele Rev. Edward D. Goodell Rev. Richard Wong 2 Sessions of Morning Worship and church school, 8:30 and 11 a.m. Nursery provided 6:30 p.m.—Methodist Youth Fellowship Meetings</p>	<p>CHURCH OF CHRIST Meets at 2051 W. 256th Street Torrance Sunday: Bible Study... 10:00 A.M. Worship... 11:00 A.M. Bible Study... 5:00 P.M. Worship... 6:00 P.M. Wednesday Study & Fellowship... 7:30 P.M. O. Max Bradford, Preacher 876-7187</p>
<p>FRIENDSHIP BIBLE CHURCH YMCA Building 2989 Washington Torrance G. E. Noy, Pastor Sunday School—10:00 a.m. Morning Worship—11:00 a.m. Evening Services—7:30 p.m. Thursday Bible Study—6:45 p.m. (Pastor's home)</p>	<p>CHURCH OF CHRIST SERVICES: Sunday: Bible Study Classes... 9:45 A.M. Morning Worship... 10:45 A.M. Young People's Class... 6:00 P.M. Evening Worship... 7:00 P.M. Wednesday: Ladies' Bible Class... 10:00 A.M. Evening Worship and Fellowship Meetings... 7:30 P.M.</p>	<p>UNITY CHURCH OF CHRISTIANITY (Church House) 2254 Torrance Boulevard Tel. 320-4871 Emma Muffley, Minister Sunday services: Walters Park Recreation House, 3833 342nd Street in Torrance Weekday classes at Church House</p>

PEP BOYS

Mammy, Moe & Jack OF CARLS

STURDY... 8-INCH PRUNING SHEARS
Lightweight—oval type.
SPECIAL 59¢

10 FOOT... STEEL ROLLING RULE
1/2 in. white face blade. Accurate markings.
59¢

5-PIECE JEWELER'S SCREWDRIVER SET
Solid brass, chrome plated.
39¢

STURDY TUBULAR HACKSAW
Quality constructed to stand up under hard use.
49¢

12-PIECE CARVING TOOL SET
ONLY 29¢

SPARK PLUG WRENCH WITH HANDLE
For easy installation of 14mm spark plugs.
11¢

7-IN-ONE HOLE SAW
Blades from 1/2" to 2 1/2" in diameter sizes.
COMPLETE SET LOW PRICE 49¢

9" REVOLVING LEATHER PUNCH
Polished handle.
69¢

Sanding and Paint Removing DISC RASPS
Fits all electric drills
YOUR CHOICE 39¢

COUNTER SINK TOOL
1/2" head, 1/2" shanks, 2" long.
Buy Several Fits 1/4" Drills 11¢

12 INCH TAILOR SHEARS
Extra sharp, steel magnitized blades pick up pins, etc.
What A Bargain! 49¢

6 PIECE... POWER AUGER BIT SET
Sizes from 1/8" to 1 inch.
LOW PRICE 39¢

Hardware Month SALE!

CHROME WHEELS
Extra bright nickel chrome for lasting beauty. Here's proof again that Pep Boys' price is the lowest price. Don't miss out on this great value.
FOR MOST CARS REVERSE TYPE \$1.00 MORE 1188

BATTERY CHARGER
For 6 and 12 Volt Systems. Automatic circuit breaker. Use any 110 volt outlet.
298

AUTOMATIC TRANSMISSION FLUID
Quality replacement fluid at a low price.
ONE QUART CAN 22¢

CORNELL TIRE SALE!

EVERY TIRE IN OUR STOCK IS ON SALE!!!

BUY NOW—PAY LATER! NO MONEY DOWN!

SPORT SPECIAL TUBELESS

895
6.40 x 15
TUBED TYPE BLACK

1177
5.0 x 15
TUBELESS BLACK

15 MONTH GUARANTEE*

WHITEWALLS ANY SIZE

250
EXTRA

895 AIR CLIPPER
6.70 x 15
BLACK TUBE TYPE

4 PLY NYLON TIRES
15 MONTH GUARANTEE*

6 Ply Rating CORNELL Nylon Heavy Duty TRUCK TIRES

6.00 x 15	15.95	6.50 x 16	17.95
6.70 x 15	16.45	7.00 x 15	20.95

ARISTOCRAT
4-PLY LOW PROFILE DUPONT NYLON TIRES
24 MONTH GUARANTEE*

CORNELL ARISTOCRAT			
SIZE	TUBELESS	SIZE	TUBED
6.70 x 15	14.45	6.70 x 15	11.95
7.10 x 15	15.45	7.10 x 15	13.45
7.50 x 14	14.45	WHITEWALLS	
8.00 x 14	16.45	250 more per tire—most sizes	

ASTRONAUT
4-PLY DUPONT NYLON CORD TIRES
30 MONTH GUARANTEE*

CORNELL ASTRONAUT TUBELESS TIRES			
SIZE	BLACKWALL	WHITEWALL	
7.50 x 14	15.95	18.95	
8.00 x 14	17.95	20.95	
8.50 x 14	21.95	24.45	
6.00 x 13	15.95	18.45	
6.50 x 13	15.95	18.45	

WHEEL BALANCING 89¢ Per Wheel Weights Included

TIRES MOUNTED FREE BY SPECIALISTS

STRIPED FUZZY MIRROR MUFF
Made of soft, fluffy fur. Comes in red & white or black & white. 55¢

UTILITY LAMP
Rubber-covered cord, rubber handle, wire bulb guard, hanging hook. With Extra Plug Attachment 98¢

GAS PEDAL EXTENSION
ADDS 2 IN. TO YOUR GAS PEDAL. Fits all gas pedals 1 1/2" to 2 1/2" in width. For better gas pedal control. 98¢

MUFFLERS INSTALLED FREE! at lowest prices

4549 ARTESIA BLVD. — LAWDALE
Directly across street from South Bay shopping center.
OPEN MONDAY AND FRIDAY EVENING TIL 9. PHONE 220-1114

FOR SALE

Did you have a termite inspection by Terminix? Did you get a Terminix protection contract? CALL TERMINIX