



DOUBLE ROLE . . . Nate Cano, 20556 Amie Ave., carried the flag of the Torrance Mounted Police in a recent parade. Cano, a Southern California Gas Company employe, thought he would miss horses when he moved from Arizona to Southern California, but still finds time to appear in parades and rodeos.

Horseman Makes Huge Transition

From the wide open spaces of Arizona cattle ranches to the congested freeways and paved by-ways of Southern California is quite a transition for a man who loves horses.

Nate Cano, 20556 Amie Ave. made the change and still finds time to devote to horses.

Cano, an employe of Southern California Gas Company's Southwest Division and based at the distribution facility at 4519 W. 182nd St., Redondo Beach, was reared in Arizona.

"WE LIVED right in the heart of cattle country," Cano explained, "and as a kid I learned to ride horses almost as soon as I learned to walk. We had plenty of teachers around — cowhands, ranchers, older kids who were willing to pass on whatever they knew about horses."

"As I got older," Cano said, "I started spending my summers helping out on some of the ranches. A lot of the other kids did the same thing — as much for the fun of it as for the pay we got."

FIRST HORSE ever owned by Cano was given to him when he was around 16 or 17 years old. He spent the better part of a night helping a rancher with a mare ready to foal. When the colt was born, the rancher turned to Cano and told him he could have it because he had been so much help.

Reserve Units Off for Active Duty Training

Two Torrance Reserve officers will leave Saturday for their annual two weeks of active duty with the 3rd Battalion, 27th Infantry of the 63rd Division. The group will be at Camp Roberts for two weeks of intensive training.

Capt. Robert M. Donaldson, 20103 Saltee Ave., and 1st Lt. Hubert H. Buttgenbach, 22734 Draille Dr., will direct the field training programs. Capt. Donaldson is a training officer, and Lt. Buttgenbach is the personnel officer.

More than 6,000 men of the 63rd Division will be at Camp Roberts for the program. The 27th Infantry is one of six battalions in the division.

Many years have passed since then. Cano has been through World War II and held a variety of jobs. For the past 15 years he has worked for the Southern California Gas Co., but has never lost his love for horses.

"AND I GUESS it's contagious," Cano exclaimed. "My wife, Dora, and our two teenage boys, Ray and Bob, love horses too, and they're all good riders."

To keep up on his riding, Cano joined the Torrance Mounted Police. He is deputized and is subject to call at all times in the event of an emergency.

With them he rides in parades and rodeos from Santa Maria to Palm Springs. In addition, the group frequently holds trail rides and campouts that include the families.

Narbonne Enrollment Times Set

Registration for the fall semester at Narbonne High School will begin at the school on Tuesday, Sept. 10, it was announced here this week. Students will pre-enroll according to grade level from 8:30 until noon Sept. 10, 11, and 12.

Students in grades A-11, B-12, and A-12 must report on Sept. 10. Grades B-11 and A-10 pre-enroll on Wednesday, Sept. 11. All B-10 students should report to the school from 8:30 to 10:30 a.m. Thursday, Sept. 12. From 10:30 until noon Sept. 12, any student who has not enrolled will be able to register.

REGISTRATION WILL be handled in the auditorium at the high school, with all department chairmen and counselors available. Any student who will need to enroll in leadership classes, school service activities, or sixth period gym classes should bring the spring final report cards for verification of eligibility.

All students must comply with the polio immunization laws before enrolling in classes. B-10 students and all new students should report at assigned times to Room C-5 before going to the auditorium. All students will be able to purchase the student activity cards when they enroll.

DAY SCHOOL

NOW REGISTERING FOR FALL TERM — REASONABLE RATES —

KINDERGARTEN THROUGH EIGHTH GRADE TEACHING THE THREE R'S WITH PHONICS Classes All Day With Complete Bus Service

HAWTHORNE CHRISTIAN SCHOOL

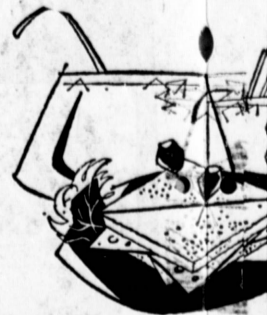
930 SO. PRAIRIE AT 136TH STREET OS 9-2591



MAGIC CHEF

BLUE CHIP STAMPS

Superior quality at sensational savings!



7 MAGIC SALE DAYS — THURS. THRU WED., AUG. 15 THRU 21

ALL GRINDS
YUBAN COFFEE
1 lb. can **59¢**

FROZEN
FLAV R PAC ORANGE JUICE
6 oz. can **23¢**

LIGHT
CHICKEN-CRUSTED TUNA
No. 1/2 can **11¢**

ASSORTED FROZEN
COUNTY FAIR FRUIT PIES
3 8 inch pies **\$1**

SUNNY
ASSORTED SOFT DRINKS
12 oz. bottle **5¢** no deposit

GOLDEN CREME
ICE CREAM
half gallon **49¢**



SWANSON FROZEN
3-COURSE DINNERS
reg. size **79¢** fried chicken, Salisbury steak, turkey

NABOB CANADIAN
STRAWBERRY JAM
4 lb. can **99¢**

NORTHERN
TOILET TISSUE
4 rolls **29¢** assorted colors

Magic Chef. All-purpose
Liquid Detergent
Desert King. Sunburst
Grapefruit
Loaded with soap
SOS Scourer
What's a picnic without picnic
Peter Piper

FROZEN IN SAUCE
BIRDS EYE
French Green Beans with Sautéed Mushrooms
French Green Beans with Toasted Almonds
Fardhook Limes with Cheese
Fardhook Limes with Tomatoes
Mixed Vegetables with Onions
Green Peas with Sautéed Mushrooms
reg. size **35¢**

FROZEN
BRIDGFOC BREAD
3 1-lb. loaves **49¢** white wheat
SLICED
F & P PEARS
3 no. 2 1/2 cans **\$1**

CHERRY STAR
SLICED PINEAPPLE
2 no. 1 flat cans **25¢**

NUTRITIONAL
VET'S DOG FOOD
3 tall cans **25¢**
FOR SUMMER
C.H.B. MAYONNAISE
24 oz. jar **39¢**

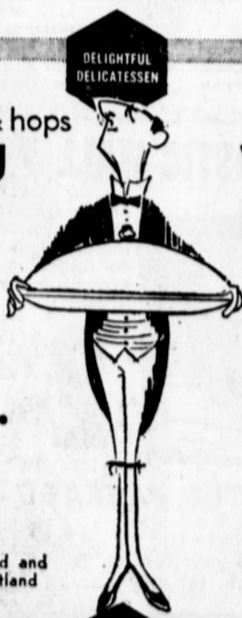


Brewed with the finest malts & hops

ELDER BRAU BEER
6 half quart cans **99¢**

WOLFSCHMIDT
VODKA
full fifth **\$3.69** new low price save 76¢ was \$4.45

KENNAWAYS
SCOTCH
fifth **\$4.98** distilled, blended and bottled in Scotland



DELIGHTFUL DELICATESSEN
CHEDDAR CHEESE WISCONSIN LONGHORN
59¢ lb.

GRAND TASTE ALL MEAT
BOLOGNA
6 oz. pkg. **29¢**

COUNTY LANE
BISCUITS
3 8 oz. tubes **25¢** sweet or buttermilk



Luscious cream, whipped cream topping! reg. 98¢
8" Banana Pie **89¢**
Delicious date-filled bars! Extra special price!
Princess Slices **2 for 15¢**
1 lb. loaf of our crusty, crunchy bread! reg. 36¢
Dutch Crunch Bread loaf **30¢**



Mogen David. Zestful sandwich fare! reg. 98¢
Kosher Chub Salami **79¢**
Old-fashioned flavor for a gourmet treat! reg. 98¢
N.Y. Cheddar Cheese **lb. 79¢**
American Wisconsin Pasteurized, reg. 79¢
Process Cheese **lb. 59¢**

Sweet, Juicy
STANDARD PRUNES
2 lbs. **29¢**