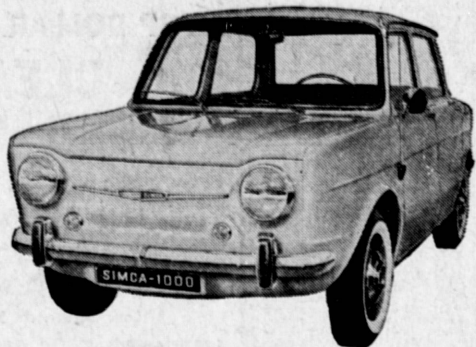


ONLY THE HERALD HAS AUDITED CIRCULATION COVERAGE OF TORRANCE - - - GO WITH THE LEADER!!

Automotive AUTOMOBILES For Sale 190	Automotive AUTOMOBILES For Sale 190	Automotive AUTOMOBILES For Sale 190	Automotive AUTOMOBILES For Sale 190	Automotive AUTOMOBILES For Sale 190	Automotive AUTOMOBILES For Sale 190	Automotive AUTOMOBILES For Sale 190	Automotive AUTOMOBILES For Sale 190
---	---	---	---	---	---	---	---

Now it's here. This is the all-new economy car from Chrysler. The Simca 1000. The car that's been a sellout success in France, West Germany, Italy and the Benelux Countries. Maybe you saw it in Life magazine. Or in one of a dozen newspapers. It's been stirring up excitement ever since its U.S. introduction. Now it's here. Ready to challenge any other economy car in town. In looks. In handling. In performance.



NEW SIMCA \$1685

NEW SIMCA 1000

\$199 DOWN \$49⁰⁰ Per Mo.
PLUS TAX & LICENSE 1 YEAR WARRANTY PARTS & LABOR

ALL PARTS AND SERVICE AVAILABLE IN OUR SERVICE DEPT. WHICH WE CONSIDER THE BEST

SIMCA by CHRYSLER

JIM ALLEN IMPORTED CAR CENTRE, INC.

NEW '63 SIMCA DEALER

15400 HAWTHORNE BLVD.
LAWDALE

OS 9-8285
SP 2-2960

**PUBLIC NOTICE!!
FINANCE REALES!**

PRIVATE PARTIES WANTED TO TAKE OVER THE FOLLOWING UNITS:

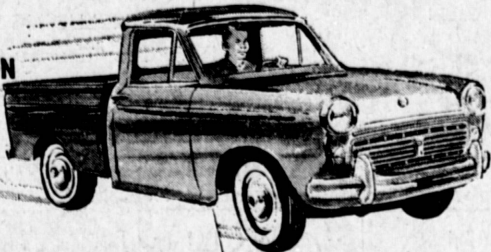
- '63 CHEVROLET Corvette Sting Ray. If no cash down pay \$39.62 month and assume contract balance of \$3891.
- '59 T. BIRD. If no cash down pay \$29.90 month and assume contract balance of \$1742.
- '60 VALIANT Station Wagon V200. If no cash down pay \$28.10 month and assume contract balance of \$1120.
- '61 CHEVROLET Impala 4-door Hardtop. If no cash down pay \$33.40 month and assume contract balance of \$1936.
- '59 RAMBLER WAGON. If no cash down pay \$29.50 month and assume contract balance of \$1148.
- '60 CHEVROLET 1/2-ton Pickup. If no cash down pay \$23.45 month and assume contract balance of \$1132.
- '59 STUDEBAKER Lark. If no cash down pay \$19.20 month and assume contract balance of \$810.
- '62 CHEVROLET Impala 4-Door Hardtop. If no cash down pay \$27.80 month and assume contract balance of \$2198.
- '57 FORD Station Wagon. If no cash down pay \$18.20 month and assume contract balance of \$858.
- '59 PLYMOUTH Station Wagon 9-passenger. If no cash down pay \$26.30 month and assume contract balance of \$245.
- '60 THUNDERBIRD. If no cash down pay \$29.00 month and assume contract balance of \$1891.
- '57 FORD Convertible. If no cash down pay \$20.90 month and assume contract balance of \$597.
- '56 CHEVROLET Convertible. If no cash down pay \$19.41 month and assume contract balance of \$541.
- '56 FORD 1/2-Ton Pickup. If no cash down pay \$18.20 month and assume contract balance of \$810.
- '59 FIAT (600) If no cash down pay \$19.10 month and assume contract balance of \$314.
- '57 ALFA ROMERO. If no cash down pay \$23.60 month and assume contract balance of \$882.
- '59 VAUXALL. If no cash down pay \$18.65 month and assume contract balance of \$410.
- '59 MERCURY Convertible. If no cash down pay \$21.40 month and assume contract balance of \$995.
- '62 RENAULT Caravelle Convertible. If no cash down pay \$24.30 month and assume contract balance of \$1264.
- '62 M.G. Roadster. If no cash down pay \$21.60 month and assume contract balance of \$1491.
- '57 AUSTIN-HEALEY Roadster. If no cash down pay \$19.92 month and assume contract balance of \$1197.
- '62 CHEVROLET Monza coupe. 4 speed. If no cash down pay \$29.80 month and assume contract balance of \$1768.
- '59 RENAULT DAUPHINE. If no cash down pay \$16.80 month and assume contract balance of \$481.
- '62 CHEVROLET Impala Sport Coupe. If no cash down pay \$31.84 month and assume contract balance of \$2397.
- '62 SPRITE. If no cash down pay \$24.67 mo. and assume contract balance of \$1778.
- '61 LANCER 4-DOOR. If no cash down—Pay \$21.91 mo. and assume contract balance of \$1148.
- '63 MG 1100 SEDAN. If no cash down—Pay \$18.50 mo. and assume contract balance of \$1124.
- '58 PLYMOUTH Wagon. If no cash down—pay \$19.41 mo. and assume contract balance \$698.
- '59 FORD station wagon. If no cash down—pay \$24.42 mo. and assume contract balance \$1228.
- '59 PLYMOUTH station wagon. If no cash down—pay \$20.87 mo. and assume contract balance \$782.
- '59 FORD 4-door. If no cash down—pay \$19.42 mo. and assume contract balance \$541.
- '61 DODGE 2-door hardtop. If no cash down—pay \$22.69 mo. and assume contract balance \$1280.
- '58 PLYMOUTH 2-Dr. H.T. If no cash down pay \$21.02 mo. and assume contract balance of \$742.
- '58 FORD Fairlane 500 2-Dr. H.T. If no cash down pay \$22.61 mo. and assume contract balance of \$810.
- '57 CHEV. Wagon 4-Dr. If no cash down pay \$23.60 mo. and assume contract balance of \$801.
- '57 DODGE 2-Dr. H.T. If no cash down pay \$19.63 mo. and assume contract balance of \$591.
- '59 RAMBLER Wagon "Stuck" overdrive, extra clean. If no cash down pay \$24.62 mo. and assume contract balance of \$1046.
- '58 PLYMOUTH Belvedere 4-Door. If no cash down pay \$19.52 mo. and assume contract balance of \$583.
- '62 FORD Falcon Futura. If no cash down—pay \$29.62 mo. and assume contract balance of \$1142.
- '61 STUDEBAKER HAWK Cpe. If no cash down—pay \$25.84 mo. and assume contract balance of \$1446.
- '60 CHEV. 4-Dr. Bel Air. If no cash down—pay \$24.63 mo. and assume contract balance of \$1221.
- '61 METROPOLITAN Hardtop. If no cash down, pay \$22.60 month and assume contract balance of \$841.00.

**VACATION SPECIAL!
IN A CLASS BY ITSELF!
DATSUN**

MORE ECONOMY • MORE DEPENDABLE • MORE EXTRAS

PICKUP
SAVES UP TO 50% ON OPERATING COSTS

- 4-speed transmission
- BIG 6' x 4' 8" bed
- Up to 1 Ton Payload
- Up to 31 mpg.
- Delivers loaded with extras!



\$1596 Delivered

4-DR. WAGON
52 CUBIC FEET OF CARGO AREA!

- Up to 33 m.p.g.
- Delivers with these extras:
- WSW Tires
- Heater and Defroster
- Vinyl Upholstery
- Factory Undercoat



4 DR. SEDAN
BIG DRIVING ON SMALL CHANGE

- Up to 33 mpg.
- Delivers with these extras:
- WSW Tires
- Heater & Defroster
- Vinyl Upholstery
- Factory Undercoat



\$99 Down

FINANCING IMMEDIATELY AVAILABLE
12 MONTHS—12,000 MILE FACTORY WARRANTY

Easier, less cost to service—Parts immediately available

GET THE DRIVE...GET THE DEAL...AT YOUR DATSUN DEALER!

TAY MOTORS

14903 HAWTHORNE BLVD.

679-9193 772-2426

OPEN SUNDAY

\$ \$ TOP DOLLAR \$ \$

FOR YOUR CAR

PAID FOR OR NOT . . .

We Will Buy Your Automobile

Any Make - Any Year Model
SAV-ON CARS

20722 HAWTHORNE BLVD.
TORRANCE

Phone: 371-3508 - 772-4024

FOR BEST CLASSIFIED ADVERTISING RESULTS — CALL FA 8-4000

CHEVYS FORDS GRAND OPENING NEW CAR LOT

- 1959 CHEVROLET IMPALA 2-DR. HARDTOP \$1299
- 1956 CHEVROLET BEL AIR HARDTOP \$499
- 1957 FORD STATION WAGON \$599
- 1957 FORD CAMPER \$999
- 1951 CHEVROLET 2-DOOR SEDAN \$49

Jim Stewart's Auto Sales
18407 Hawthorne Blvd.
Torrance FR 0-3349

1958 FORD 1/2 TON PICKUP LONG BED \$1195

Very clean. Excellent condition, with camper.
24 MONTHS TO PAY
ROBIN MOTORS
3201 Pac. Coast Hwy.
Hermosa Beach 372-3111

1957 BUICK 4-Door Hardtop. Radio, heater, full power.
\$6.75 A WEEK
TAY MOTORS
14903 Hawthorne
679-9193 772-2426

1959 PLYMOUTH Coupe. Floor shift. \$9.75 A WEEK TAY MOTORS 14903 Hawthorne 679-9193 772-2426

1962 NOVA "T". Immaculate. Older car for equity and take over payments. Phone 325-9525
EXTRA clean '55 Olds 88 Holiday. \$395. Owner FA 8-2490
VOLKSWAGEN Kombi Bus for vacation or work. Excellent condition. Clean. Best offer. Private party. 328-6241.
'57 CHEV. 1/2-ton pickup. Completely reconditioned, including engine. \$899. 2310 Lomita Blvd. Cal Auto Wholesalers.

1959 PLYMOUTH Wagon. Vacation Special! \$10.25 A WEEK TAY MOTORS 14903 Hawthorne 679-9193 772-2426

'62 CHEVY. Super sport. Private party. \$2250. Phone 328-3845

Merchandise For Sale

SPORTING GOODS 162
COMPLETE Camping Outfit. New modern 9'x12' Tent. Coleman stove, Lantern, Ice box, 2 aluminum cots and pads. Take all for \$125. FA 8-0491.

FURNITURE and Appliances Wanted 176
WANTED. Appliances. Including fridges and refrigerators. Top dollar paid. FR 9-8016.

TRAILERS For Sale or Trade 188
TWO 27-FT. TRAILERS \$150 to \$250. Will sell or trade. 17855 Evalyn. Gardena. DA 9-5125

TRUCKS & CAMPERS 189
G.M.C. V-8. Hydramatic with Turnpike "deluxe over-cab" camper. Must see to appreciate. DA 4-2251
'52 DODGE PANEL TRUCK Clean—Good rubber. \$250 After 5 p.m. 370-4128

Need a job, a place to live, a car? Place a "Wanted" ad for action. FA 8-4000

HOVEY DALLAS "SECOND CAR CITY"

'55 CHEVROLET 2-Door Sedan, Radio, Heater, Automatic Transmission. **Only \$295**

'55 RAMBLER WAGON Radio, Heater, Tutone Paint. Excellent Condition. **Only \$395**

'55 FORD CONVERTIBLE Automatic, Radio, Heater, Very Clean. **Only \$295**

'56 PLYMOUTH 2-Door Sedan, Automatic Transmission, Radio, Heater, Excellent Buy. **Only \$195**

'55 PONTIAC WAGON V8, Hydramatic, Radio, Heater, A Steal!! **Only \$195**

'55 DODGE LANCER HDTP. V8, Automatic Transmission, Radio, Heater, Tutone Paint. **Only \$295**

'57 OLDSMOBILE 88 4-Door Sedan, V8, Hydramatic, Radio, Heater, Tutone Paint. Exceptionally Clean. **Only \$595**

'57 CHEVROLET Deluxe 4-Door Sedan, V8, Powerglide, Radio, Heater, Extremely Nice. **Only \$695**

'57 DODGE 2-DR. SEDAN V8, Automatic, Radio, Heater **Only \$395**

'58 MERCURY MONTEREY Hardtop, Automatic, Radio, Heater, Very Clean. **Only \$495**

HOVEY-DALLAS CHEVY CENTER

15600 S. WESTERN AVE. DA 3-0303 GARDENA FA 1-2904

1956 BUICK Roadmaster Convertible. Beautiful. \$4.90 A WEEK TAY MOTORS 14903 Hawthorne 679-9193 772-2426

1958 T-BIRD Full power. \$14.50 A WEEK TAY MOTORS 14903 Hawthorne 679-9193 772-2426

Brand New '63s
Valiant \$1865
Plymouth \$1995
Chrysler .. \$2964
International Trucks \$1999

Our Low Overhead Saves You \$\$\$ Drive 3 Miles and See
CARL'S MOTORS Since 1937
1200 AVALON BLVD WILMINGTON TE 5-3131

'57 FORD 6-cyl. Ranch Wagon. Radio, Heater, overdrive. \$899. Cal Auto Wholesalers 2310 Lomita Blvd.

'56 RIVIERA 2 door hardtop. Like new inside and out. 1 owner. '51 Chevy. 2 door. Standard shift. 379-8740.
1957 MERCURY 4-Door Wagon. Radio, heater, automatic transmission. Real nice. \$7.25 A WEEK TAY MOTORS 14903 Hawthorne 679-9193 772-2426

'56 CHEVROLET 8-cylinder hardtop. Radio, heater. Full power. \$699. Cal Auto Wholesalers 2310 Lomita Blvd.
1959 CHEVROLET Hardtop. 3 to choose from. Full power. \$12.25 A WEEK TAY MOTORS 14903 Hawthorne 679-9193 772-2426