



Wipe off that Smug Smile You Husbands

by *Count Marco*

I understand your beast is behaving like a beast and pasting my column on your mirror or placing it by your plate in the morning to remind you to straighten up and fly right.

Some of you have complained that even as an ex-husband he's reminding you of your failures by mailing the column to you.

Well, here's one you can paste on his mirror. Not all men are princes either. Some specimens are pretty bad, and believe me, I feel sorry for many of you when I see what you're stuck with.

So, lest he get overconfident and think the sun rises and sets on himself alone, you might paste him with this check list, which should once and for all put an end to his reminding you daily of your shortcomings. It is enough that I do it.

Qualifications for a dream husband:

- Does he call you unexpectedly in the morning from work and tell you happily that he's taking you to dinner as a surprise for no reason?
- Does he bring you little gifts of perfume, lingerie or jewelry for absolutely no other reason than that he's thinking of you during the day?
- Does he take you window shopping occasionally just for fun?
- Does he take you out dancing or for cocktails without other couples tagging along? Does he hold your hand?
- Does he suggest, without prodding from you, that you go out with the girls one night and

he'll stay home with the children?

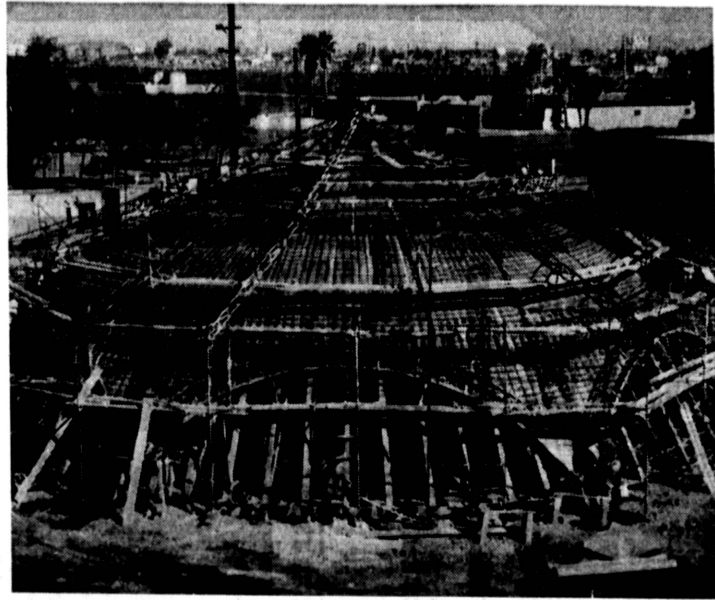
- Does he comment on your clothes without being sarcastic?
- Does he help you select your dresses and hats?
- Does he hold doors open for you?
- Does he arise proudly when you enter the room, or hold your chair as you sit down?
- Does he tell you how beautiful you are?
- Does he tell you he loves you?

If he does all this he has a perfect right to be smug, and indeed the sun does rise and set on him. And you may tell him so.

Wives, please note: If you do intend to post this, stop and reflect: Are you deserving to own such a jewel?

A good wife begets a good husband. So don't expect such a marvel unless you, in turn, are one yourself. Now post it.

(Distributed by Chronicle Features.)



COLLEGE PLANETARIUM . . . A planetarium, first of its kind in the harbor area, is under construction at Harbor College. The structure is one of six currently under construction on the campus located on the west side of the Harbor Freeway and south of Pacific Coast Highway. The planetarium will be used by the college students, the general public, and students of neighboring schools.

Hold Tree Planting Ceremony

Temple Menorah, 1101 Camino Real, Redondo Beach, started Tu B'Shvat services and tree planting yesterday and will finish today. Trees will be planted on Temple grounds.

Tu B'Shvat is one of the newer holidays which began around the time of Jesus. In one of the Jewish law books called the Mishna, it describes a new year for trees when people were required to beautify their landscaping in appreciation of the beauty of life which God had given them.

When the first Jewish settlement in Israel began in 1880, the planting of trees became a prime requirement so that the land would become beautiful and livable.

Every year at this season, an effort is made to get donations for the planting of trees in Israel.

Notes Illnesses

Four cases of measles and syphilis were reported to the Los Angeles County Health Department for the Torrance area during the week ending Feb. 2.

RED RYDER

By Fred Harmon



JEFF COBB

By PETE HOFFMAN



Mothers Club College Construction Sets Auction Ahead of Schedule

The Mothers Club of Bishop Montgomery High School will sponsor a silent auction and luncheon at the Pen & Quill Restaurant in Manhattan Beach Feb. 20. Cocktails and the auction will be at 11:30 and the luncheon at 12:45 p.m. The price is \$3.50.

Each person is asked to save their white elephants, anything that someone else may bid on, such as: silverware, sports equipment, lamps, antiques, and books.

Instructs Course

James McMichael, "Dean of the Exchangers of California" will instruct the UCLA extension course "Income Tax Aspects of Real Estate Transactions" starting Feb. 25 at the Torrance-Lomita Real Estate Board headquarters.

"Running ahead of schedule" sums up the construction picture on the Los Angeles Harbor College campus.

According to J. Reyburn Hatfield, dean of special services, the Phase III building program is more than two-thirds completed and is well ahead of schedule. "Moving into the new buildings is scheduled for July 15, which is several weeks ahead of the deadline date," says Hatfield. "We are now making plans for an open house and dedication program early in October."

Included in the \$2,500,000 building program financed by bonds passed in 1960 are administration, astronomy, business, science, and student center. The 19 additional classroom will provide facilities for 3,500 daytime students.

CONTRACTORS FOR the program are C. V. Holder and Nodman G. Toombs with Richard Cherry serving as inspector for the Board of Education.

"Unique among the buildings designed by the architectural firm of A. C. Zimmerman and F. D. Howell is the planetarium which is the first of its kind in the Harbor area and one of the few structures in Southern California," said Hatfield. This building will be used for demonstrations and lectures not only for Harbor College students but for classes of neighboring schools and the general public as well.

CONSTRUCTION of the planetarium has drawn the interest of many sidewalk superintendents. First, a domelike shell had to be constructed out of stout timbers, plywood, and reinforcing steel.

A concrete coating was then sprayed on this framework. After a period of curing, the supporting timbers and the plywood shell will be removed. Next step will be the installation of the projector which will duplicate the movement of the stars.

Scout Troop 80

Girl Scout Troop 80 recently spent an afternoon ice skating. Participating troop members were: Jamie Amaya, Paula Cadenhead, Kenda DeFrees, Christy Erdman, Karen Fredrickson, and Janie Garman.

Gale Hammond, Debbie Harbor, Sharen Holt, Debbie Johnson, Mary Marsh, Jane McCullen, Janice Meyers, Kim O'Leary, Betty Jean Rayes, Melanie Rickabaugh, Lynn Terrazas and Angie Williams.

If a good face is a letter of recommendation, a good heart is a letter of credit. — Edward George Bulwer-Lytton.

Temporary Assessor's Office Opens March 7

The County Assessor's temporary branch office in this area will be open to the public on Thursdays, March 7 to May 2, from 9 to 4:30 p.m., at the City Hall, 3031 Torrance Blvd. This is in accordance with a projected savings of 5,487 man days introduced by Philip E. Watson, county assessor, since taking office in December.

because of the simplified procedures, only 44 temporary offices will be needed to assist the public in filling out forms which are due back in the assessor's office between the first Monday in March and the first Monday in May. The offices will be open one day a week during these two months.

THE SAVING in man days, equivalent to more than 100 men working five days a week for 10 weeks, has resulted from Watson's introduction of electronic computation of household furnishings assessments, the filing of veteran exemption claims and landlord reports by mail, and the elimination of the corps of deputy appraisers who formerly assessed personal property and took veterans' applications. Watson said that this year,

THIS CONTRASTS with last year, when 71 temporary offices were open, most of them five days a week, for an average of three months.

In addition to the temporary offices, the main office in the Hall of Administration in downtown Los Angeles and the permanent branch offices in Hollywood, Lancaster, Long Beach, Pomona, San Pedro, Santa Monica and Van Nuys will be open, as usual, Monday through Friday.



If You Are A Newcomer to Torrance Call DORIS STAMM DA 7-9193

for a visit from Welcome Wagon

Dependable Insurance
FIRE AUTO
Lund CO. AGENTS
1425-A MARCELINA DOWNTOWN TORRANCE
PHONE FA 8-3567

VISIT THE NEW . . .
Charley's
FOR STEAKS
1625 Cabrillo Avenue, Torrance
LUNCH AND DINNER
BOB GARRETSON at the Organ
Private Parties FAirfax 8-7119

WOULD YOU KNOW IT? I PLAY AT HACKERS' HAVEN
HACKERS' HAVEN
DRIVING RANGE
3 PAR GOLF
GOLF INSTRUCTION 4 GROUP LESSONS \$3.00
DISCOUNT CARD \$15.00 VALUE \$10.00
No Finer Selection of Driving Range Balls—Anywhere!
2335 Sepulveda Terr. (Bot. Arlington & Crenshaw) FA 8-0789

CRENSHAW WESTERN SEPULVEDA VERMONT
PACIFIC COAST HIGHWAY
TUES. NITE IS **HOCKEY NITE**
PUBLIC WILL BE ABLE TO SKATE 1½ HOURS PLUS WATCH THE HOCKEY GAME!
SEMI-PRO HOCKEY TORRANCE vs. BAKERSFIELD
Adults \$1.50 Children to 16-yrs. 75c
OLYMPIC ICE ARENA
238th STREET and WESTERN AVENUE, TORRANCE DA 5-4474