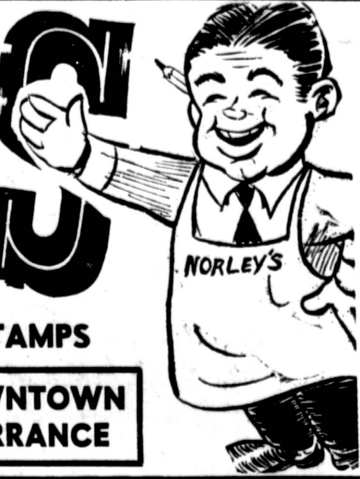


**GOLDEN CREME**  
"CREAM PAK"  
**ICE CREAM**  
1/2 GALLON  
**49<sup>c</sup>**

**DAILY DIET**  
**DOG FOOD**  
SAVE!  
**18<sup>c</sup> FOR \$1**

# NORLEY'S



YOU GET BIG SAVINGS PLUS VALUABLE BLUE CHIP STAMPS

**1330 EL PRADO**

Open Sunday, 10 A.M. to 2 P.M.  
Mon., Thurs., Fri., 9 A.M. to 9 P.M.  
Tues., Wed., Sat., 9 A.M. to 7 P.M.

**DOWNTOWN TORRANCE**

**Nalley's Fradelis**  
**FROZEN DINNERS**  
Your Choice . . . . .  
**39<sup>c</sup>**

M.J.B. — 6-oz.  
**INSTANT COFFEE** **69<sup>c</sup>**

DOLE'S — 46-oz. Can  
**Pineapple JUICE** **25<sup>c</sup>**

SPRINGFIELD  
**Sliced Pineapple** **6<sup>c</sup> FOR \$1**  
1 1/4 Size Can

PILLSBURY  
**CAKE MIX** **29<sup>c</sup>**  
WHITE, YELLOW AND DEVILS FOOD

**WAXTEX WAX PAPER 17<sup>c</sup> | CRISCO 3<sup>lb.</sup> CAN 75<sup>c</sup>**

**PRODUCE**  
**Spanish Onions 3 lbs. 17<sup>c</sup>**  
White Rose  
**Potatoes 10 lb. bag 39<sup>c</sup>**  
Golden Delicious  
**Apples . . . . . 8 lbs \$1<sup>00</sup>**

**DELICATESSEN**  
LUR'S ALL MEAT  
**FRANKS**  
**49<sup>c</sup> lb**

**CALO CAT FOOD** Tall = 15 1/2 Cans **3 FOR \$45<sup>c</sup>**

**KRAFT'S SALAD OIL 35<sup>c</sup>**  
24-oz. Bottle

- MAXWELL HOUSE COFFEE Regular or Drip . . . 1-lb., 63c . . . . . 2-lbs., 1.25
- YUBAN COFFEE . . . . . 1-lb., 69c
- KEYSTONE MUSHROOMS (Stems and Pieces) 4-oz. . . . . 39c
- GLORIETTA FREESTONE PEACHES (303) . . . . . 27c
- HAWAIIAN FROZEN PUNCH (6-oz. can) . . . 2 for 39c
- REYNOLDS ALUMINUM FOIL . . . . . Reg. size 33c
- STERO BOUILLON CUBES . . . . . 5 Count 10c
- SCOTTIES FACIAL TISSUE . . . . . 400 Count 27c
- SCOTTOWELS . . . . . Jumbo Size 33c

**ALL PURE CAN MILK TALL CAN**  
**2 for 25<sup>c</sup>**



## PLAZA QUALITY WHOLESALE MEATS

**1330 EL PRADO FA 8-7422 DOWNTOWN TORRANCE**

**ROLLING HILLS PLAZA SHOPPING CENTER**  
CRENSHAW AND PACIFIC COAST HWY., TORRANCE DA 5-2782

**313 MAIN STREET EA 2-2111 EL SEGUNDO**

PERSONALLY SELECTED CHOICE STEER BEEF AND EASTERN PORK, TOP GRADE LAMB, VEAL & POULTRY

### BEEF SALE

# STEAK

**Roasts**  
Choice Center Cut Chuck . . .  
A TENDER, TASTY BEEF ROAST IS A FAMILY PLEASER ANY TIME . . . SELECT YOUR FAMILY'S FAVORITE NOW AT SALE PRICES . . . ALL U.S.D.A. INSPECTED, CUSTOM TRIMMED.  
**49<sup>c</sup> lb.**  
**STANDING RIB ROAST** **79<sup>c</sup> lb**  
The King of All Roasts

**T-BONE 98<sup>c</sup> lb.**  
**CUBE or RIB STEAK 89<sup>c</sup> lb**  
**LEAN SHORT RIBS 29<sup>c</sup> lb.** } **CHUCK STEAK 49<sup>c</sup> lb.**

**TOP SIRLOIN \$1<sup>29</sup> lb.**  
**SPENCER \$1<sup>39</sup> lb.**  
**PERSONALLY SELECTED STEER BEEF**  
Steer Beef Expertly Trimmed for Minimum Waste!  
Perfect Aged



LUR QUALITY SMOKED, SKINNED  
**HAM**  
SHANK PORTION (As Cut) **37<sup>c</sup> lb.**  
CUSTOM CUT AND FREEZER WRAPPED FREE OF CHARGE  
**WHOLE HAMS** **49<sup>c</sup> lb.**  
ANY THICKNESS **CENTER SLICES 98<sup>c</sup> lb.**

**RUMP ROAST 79<sup>c</sup> lb.**  
**LEAN MEATY SPARE RIBS 39<sup>c</sup> lb.**

**ROUND STEAK 79<sup>c</sup> lb.**

**BABY BEEF LIVER 59<sup>c</sup> lb.**  
**FRESH, LEAN GROUND BEEF 39<sup>c</sup> lb.**

**Porterhouse STEAKS 109<sup>c</sup> PER LB.**  
100% GUAR.

**ALL MEAT BOLOGNA . . . . . 39<sup>c</sup> lb**  
**ALL MEAT WIENERS . . . . . 39<sup>c</sup> lb**  
**OR TOP GRADE LIVER SAUSAGE . . . . . 39<sup>c</sup> lb**