

REACH MORE HOMES BY FAR! -- ONLY THE HERALD COVERS TORRANCE WITH AUDITED CIRCULATION!!

Automotive AUTOMOBILES For Sale 190	Automotive AUTOMOBILES For Sale 190	Automotive AUTOMOBILES For Sale 190	Automotive AUTOMOBILES For Sale 190	Automotive AUTOMOBILES For Sale 190	Automotive AUTOMOBILES For Sale 190	Automotive AUTOMOBILES For Sale 190	Automotive AUTOMOBILES For Sale 190	Automotive AUTOMOBILES For Sale 190
---	---	---	---	---	---	---	---	---

# Only 5 Shopping Days Left!

## NO PAYMENTS UNTIL FEBRUARY 1963

**Paul's** CHEVROLET

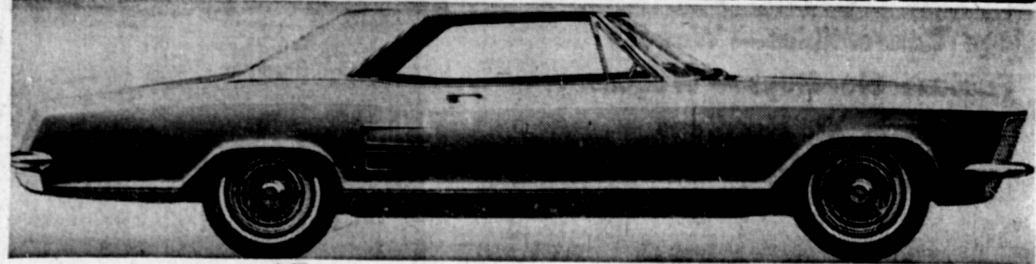
— 2 GIANT LOCATIONS —

- 20725 Hawthorne Blvd.
- 1640 Cabrillo Ave. FA 8-1644

- '59 CHEVROLET PICK-UP TRUCK  
Half ton, long bed with economical 6-cylinder engine, stick shift and whitewall tires. **\$1199**
- '58 THUNDERBIRD  
Ivory and maroon two tone, power steering, brakes and windows. Radio, heater and white walls. **\$1899**
- '59 CHEVROLET SPORT SEDAN  
4-door model with power steering, power brakes, automatic, V-8 engine, eye glass, whitewalls and in immaculate interior with white exterior. **\$1599**
- '60 CHEVROLET BEL AIR  
2-door Sedan with V-8, automatic transmission, radio, heater and it is original and spotless throughout! **\$1699**

- '61 MONZA  
Beautiful white interior with maroon finish. Automatic transmission, radio, heater, whitewalls and eyeze glass. **\$1949**
- '59 FORD 2-DOOR SEDAN  
Lustrous white finish, V-8 engine, with gas-saving standard transmission, radio, heater and whitewalls. **\$899**
- '56 CHEVROLET 4-DR. STATION WAGON  
Blue and white two-tone finish, automatic transmission... perfect family car... priced for a second car! **\$599**
- '59 PONTIAC CATALINA HARDTOP  
4-door model with beige and white two-tone finish, Big, powerful V-8 engine, power steering and brakes, automatic, radio, heater and whitewalls. **\$1699**

The only totally new automobile for 1963 -- the Riviera by Buick! See it now in our showroom!



AT...

### BUTLER BUICK

400 So. Sepulveda Blvd.  
MANHATTAN BEACH  
FR 4-8968 SP 2-1431

## THERE'S 'SOMETHING EXTRA' IN EVERY '63 OLDSMOBILE!



STARFIRE COUPE

### Before You Buy Any Automobile, Visit and Test Drive THE NEW

- NINETY-EIGHT
- STARFIRE
- SUPER '88'
- DYNAMIC '88'
- F-85
- JET FIRE

SEE FOR HOW LITTLE MORE YOU CAN OWN AN OLDSMOBILE -- OVER THE SO-CALLED LOW PRICED CARS!

SEE US TODAY -- DON'T WAIT!

### RONALD E. MORAN, Inc.

YOUR OLDSMOBILE-CADILLAC DEALER

900 Pacific Coast Highway

REDONDO BEACH

Open 7 Days a Week

FR 2-2181, SP 2-2811

**Merchandise For Sale**

**FURNITURE And Appliances 154**

**FORCED TO SELL BELOW COST 5 RMS. BAL. \$263.29**

FINANCE COMPANY WANTS IMMEDIATE REPOSSESSION PAY-OFF. Will sacrifice \$300 Equity. Free 2.0 to 2.0 of QUALITY FURNITURE AND APPLIANCES. Full price \$263.29. Payments of \$2.50 per week. Includes: Kelvinator refrigerator, Frigidaire range, Crosley living room table and lamp, ABC automatic washer, Empire dinnette, 1 bedroom set with box spring and mattress plus bunk beds complete RCA 5" TV, dishes, pillows, spreads. Lot #704. Items 418 thru 425.

OUT OF STATE CREDIT O.K. FRIENDLY FURNITURE 2067 TORRANCE BLVD. TOR. FA 8-0930

REFRIGERATOR--NORGE 12 cu. ft. 1962 model, copper tone in color. Has large cross top freezer and deep shelves in door, plus dairy section and full width crisper. Bought but never used. Deal fell through on house, will sacrifice for balance due. \$177.00 or \$8 per month. See at 1544 W. Carson St., Carson Plaza Shopping Center. Call FA 8-9527. Open Sunday 12-5.

REFRIGERATOR--1962 Philips deluxe. Large croquet freezer model. Separate meat chiller, stainless steel shelves, and shelves in door. Used months. Balance due \$109.84. No cash needed. Pick up payments of \$9 no. See anytime, days, even, Sunday, 1821 Pacific Coast Hwy. Lomita. (1 block west of Western. DA 6-4829)

WHIRLPOOL gas dryer, 1962 model, has 4 way heat, plus 3 way heat control. Landlord won't let us install, so must sacrifice. Equity free. Just make payment. \$9 per month. See at 1544 W. Carson St., Carson Plaza Shopping Center. Call FA 8-9527. Open Sunday 12-5.

AUTOMATIC WASHER--G. E. 1960. Large deluxe model. Has porcelain top and tub. 2-speed 4-cycle including water saver control. Still carries guarantee. Will sell for balance due plus small delivery charge. \$126.19 or \$6.50 per mo. See at 1544 W. Carson St., Carson Plaza shopping Center. Call FA 8-9527. Open Sunday 12-5.

ADMIRAL TV--82 deluxe--console model. All wood cabinet, been repossessed. Sell for balance due \$167.41. No cash needed. Take over payments of \$8.70 mo. See anytime, days, even, Sunday, 1821 Pacific Coast Hwy. Lomita. (1 block west of Western. DA 6-4829)

HORGE DRYER, 1962 model, has 4-way heat, extra large tub and timer. Not used. Still has 5-year warranty. Moving, must sacrifice. Equity free. Take over balance due \$187.14 or \$7.76 per mo. See at 1544 W. Carson St., Carson Plaza Shopping Center. Call FA 8-9527. Open Sunday 12-5.

KELVINATOR Refrigerator. Very nice condition. Perfect size for apt. Furnishing \$449. 2549 Wilshire Rd. (Walters). DA 6-3310

HCA Whirlpool automatic washer, the big deluxe model 1962, has 2 cycles, lint filter, and all extras, can have for balance 10 bank, \$146.52 or pay \$7.50 per mo. Moving, nothing for my equity and no cash needed. Still has new factory warranty. Will deliver free. See at 14118 S. Vermont. DA 4-8294.

**EVERY ONE AN Honest Valued**

**CADILLAC'S**

- NEW 1963 CADILLAC TRADE-INS
- FINEST SELECTION IN THE AREA
- ALL BODY STYLES
- ALL MODELS -- ALL COLORS
- WITH AND WITHOUT AIR CONDITIONING

**BARGAIN SPECIALS!!**

1958 OLDSMOBILE \$899	1959 CHEVROLET \$999
1958 FORD \$799	1955 PONTIAC \$499
1956 OLDSMOBILE \$499	1958 MERCURY \$999

**RONALD E. MORAN, INC.**  
YOUR AUTHORIZED CADILLAC-OLDSMOBILE DEALER  
25 PACIFIC COAST HWY. HERMOSA BEACH  
FRontier 4-3478

**Merchandise For Sale**

**FURNITURE And Appliances 154**

PHILCO TV--21" blond on swivel base "Predicta" slim line 8" x 11" n.g. Repossessed, must sell for balance due, \$119.76 or pay \$8 per month. Will deliver. See at 1544 W. Carson St., Carson Plaza Shopping Center. FA 8-9527. Open Sunday 12-5.

OKEEFE & Merritt gas range--1962 the big model, all "CP" automatic, clock, light, star jet burner, glass oven door, chrome adjustable broiler, and all extras. You can have for the balance, 10 bank, \$167.54 or take over my bank payments, \$8.50 mo. Moving, must sacrifice. My equity free, and no cash needed. See at 14118 S. Vermont. DA 4-8294.

WHIRLPOOL AUTO MATTIG WASHER--1962 deluxe model. Never used. Been in storage, still has new guarantee. Sell for a large balance due, \$148.84. No cash needed, just like over payments of \$7.70 per month. See anytime, days, even, Sunday, 1821 Pacific Coast Hwy. Lomita. (1 block west of Western. DA 6-4829)

MAJESTIC TV-radio/phone combination. Mahogany, has 21" picture tube, voice of music, 4 speed changer. Very nice finish. Original cost \$603. Will sell for \$139.50, pay \$6.50 per month. See at 1544 W. Carson St., Carson Plaza Shopping Center. FA 8-9527. Open Sunday 12-5.

**MISCELLANEOUS 158**

CLOTHING (Some new.) Girls size 8. Boys 4 and 10 new suit. Ladies size 14. Red party dress. FR 1-1744.

**Merchandise For Sale**

**MISCELLANEOUS 158**

AMERICAN Flyer train set. Freight cars, plecty back truck crane and work cars, remote log loader, 3 switches, track inculper, scale scenery. DA 4-8279.

White Fibreglass Snow Beautiful for outdoor Xmas scenes. 100 sq. ft. rolls, \$7. FR 6-8224, 1423 Herrin, Redondo Beach.

PORTABLE Columbia Hi Fi and stand. (Mahogany.) \$190. 1700 21st. Lomita. DA 6-2254.

LIONEL TRAIN SET WITH ACCESSORIES Call DA 4-3423

COMPLETE MATERNITY WARDROBE Size 8. DA 4-6837

**MUSICAL Instruments 160**

MAKE IT A MERRY LOWREY CHRISTMAS AUTOMATIC ORCHESTRA CONTROL ON '63 LOWREY ORGANS

You must hear it to believe it. Order early for Christmas delivery.

GOOD USED TRADE-IN ORGANS AVAILABLE. ALL GUARANTEED. NO DOWN PAYMENT. NO PAYMENT TILL FEB. 15

TAILFORD'S 21006 HAWTHORNE BLVD. PHONE 371-5092 NO. OF TORRANCE BLVD.

TRUMPET--Olds Ambassador. Good condition. \$80. FA 8-0176

**Merchandise For Sale**

**MUSICAL Instruments 160**

Have You Heard The Fabulous Extra Voice Organ?

The Hammond Electronic organ that you can own for as low as \$18.94 per month

\$74.16 Down Payment

GUITARS, VIOLA HARP, BANJOS, TROMBONES, VIOLINS, TRUMPETS AND 197's OF OTHER ORGAN VOICES. ELECTRONIC PERCUSSION SOUNDS, TOO.

Ask Us About Our Rental Plan

HAMMOND ORGAN STUDIO OF SOUTH BAY  
Open weekdays, 10 a.m.-9 p.m. Saturday 11 a.m. to 6 p.m. Sunday 1 to 6 p.m.

1 mile E. of Del Amo Center 2768 Sepulveda, TORRANCE

**Merchandise For Sale**

**BICYCLES 161**

South Bay's Largest BIKE SHOP XMAS LAY-AWAY 200 Schwinn Bicycles to choose from Circle Cycle Co. 3550 REDONDO BCH. BLVD. Across from Alondra Park OPEN DAILY DA 9-7322

**BOATS and Supplies 164**

'59 SHIMCRAFT 16' BOAT 40 h.p. Mercury engine. Also trailer, life jackets, ski rope, etc. \$675 complete. TE 2-4721.

**PETS, POULTRY Livestock 172**

POODLE GROOMING "For those who care enough." \$1.50 with this ad. TE 5-3838

BEAGLE puppies, 6 weeks old at Christmas. Have papers. DA 9-38621

2 CHRISTMAS PUPPIES (Females.) Mother pedigreed Boston Bull terrier \$10 & \$5. 371-9609

REGISTERED GERMAN SHEPHERD PUP. FEMALE \$40. FA 8-7522

**FURNITURE and Appliances Wanted 176**

NEW BUSINESS. In desperate need of furniture, Ranges and Refrigerators. Top dollar paid. FR 9-8016

**Merchandise For Sale**

**MOTORCYCLES And Scooters 180**

'55 FORD 1/2 ton pick-up. \$25.00 delivers. If no other cash pay \$12.96 per month and assume contract balance. Dir. Call Mr. Terry. TE 1-5459.

'60 PULCON 4-door, stick-shift. \$40.00 delivers. If no other cash pay \$14.96 per month and assume contract balance. Dir. Call Mr. Terry. TE 1-5459.

'60 CORVETTE 4 speed, big engine, hard top, \$100.00 and make payments. For details call Mr. Allen. FR 2-8406.

'58 AUSTIN Healey hardtop. \$8.00 and make payments. For details call Mr. Allen. FR 2-8406

**FOR CLASSIFIED CALL FA 8-4000**

**TRAILERS For Sale or Trade 188**

1959 GOLDEN STATE 10x49. Two bedrooms, full size bath, front kitchen, 9x42 aluminum awning. DA 3-7103, 18616 So. Figueroa, Gardena. Space P21. FA 8-8082.

**TRUCKS & Campers 189**

1959 CHEVROLET El Camino. Stick, radio, heater, Shurt. Private owner, \$1750. Phone days 376-8747. Nights, FA 8-8082.

1952 CHEVROLET 1/2 ton panel truck. \$150. 20814 So. Harvard

MUST sell by Dec. 25th. Due to death, 1962 Chevrolet Long bed 1/2 ton pickup. 251-1319

'55 VOLKSWAGEN pickup. Low miles. Top condition. Private party. \$885. DA 6-6214.

**Merchandise For Sale**

**MOTORCYCLES And Scooters 180**

'55 FORD 1/2 ton pick-up. \$25.00 delivers. If no other cash pay \$12.96 per month and assume contract balance. Dir. Call Mr. Terry. TE 1-5459.

'60 PULCON 4-door, stick-shift. \$40.00 delivers. If no other cash pay \$14.96 per month and assume contract balance. Dir. Call Mr. Terry. TE 1-5459.

'60 CORVETTE 4 speed, big engine, hard top, \$100.00 and make payments. For details call Mr. Allen. FR 2-8406.

'58 AUSTIN Healey hardtop. \$8.00 and make payments. For details call Mr. Allen. FR 2-8406

**FOR CLASSIFIED CALL FA 8-4000**

**TRAILERS For Sale or Trade 188**

1959 GOLDEN STATE 10x49. Two bedrooms, full size bath, front kitchen, 9x42 aluminum awning. DA 3-7103, 18616 So. Figueroa, Gardena. Space P21. FA 8-8082.

**TRUCKS & Campers 189**

1959 CHEVROLET El Camino. Stick, radio, heater, Shurt. Private owner, \$1750. Phone days 376-8747. Nights, FA 8-8082.

1952 CHEVROLET 1/2 ton panel truck. \$150. 20814 So. Harvard

MUST sell by Dec. 25th. Due to death, 1962 Chevrolet Long bed 1/2 ton pickup. 251-1319

'55 VOLKSWAGEN pickup. Low miles. Top condition. Private party. \$885. DA 6-6214.

**Merchandise For Sale**

**MOTORCYCLES And Scooters 180**

'55 FORD 1/2 ton pick-up. \$25.00 delivers. If no other cash pay \$12.96 per month and assume contract balance. Dir. Call Mr. Terry. TE 1-5459.

'60 PULCON 4-door, stick-shift. \$40.00 delivers. If no other cash pay \$14.96 per month and assume contract balance. Dir. Call Mr. Terry. TE 1-5459.

'60 CORVETTE 4 speed, big engine, hard top, \$100.00 and make payments. For details call Mr. Allen. FR 2-8406.

'58 AUSTIN Healey hardtop. \$8.00 and make payments. For details call Mr. Allen. FR 2-8406

**FOR CLASSIFIED CALL FA 8-4000**

**TRAILERS For Sale or Trade 188**

1959 GOLDEN STATE 10x49. Two bedrooms, full size bath, front kitchen, 9x42 aluminum awning. DA 3-7103, 18616 So. Figueroa, Gardena. Space P21. FA 8-8082.

**TRUCKS & Campers 189**

1959 CHEVROLET El Camino. Stick, radio, heater, Shurt. Private owner, \$1750. Phone days 376-8747. Nights, FA 8-8082.

1952 CHEVROLET 1/2 ton panel truck. \$150. 20814 So. Harvard

MUST sell by Dec. 25th. Due to death, 1962 Chevrolet Long bed 1/2 ton pickup. 251-1319

'55 VOLKSWAGEN pickup. Low miles. Top condition. Private party. \$885. DA 6-6214.

**Merchandise For Sale**

**MOTORCYCLES And Scooters 180**

'55 FORD 1/2 ton pick-up. \$25.00 delivers. If no other cash pay \$12.96 per month and assume contract balance. Dir. Call Mr. Terry. TE 1-5459.

'60 PULCON 4-door, stick-shift. \$40.00 delivers. If no other cash pay \$14.96 per month and assume contract balance. Dir. Call Mr. Terry. TE 1-5459.

'60 CORVETTE 4 speed, big engine, hard top, \$100.00 and make payments. For details call Mr. Allen. FR 2-8406.

'58 AUSTIN Healey hardtop. \$8.00 and make payments. For details call Mr. Allen. FR 2-8406

**FOR CLASSIFIED CALL FA 8-4000**

**TRAILERS For Sale or Trade 188**

1959 GOLDEN STATE 10x49. Two bedrooms, full size bath, front kitchen, 9x42 aluminum awning. DA 3-7103, 18616 So. Figueroa, Gardena. Space P21. FA 8-8082.

**TRUCKS & Campers 189**

1959 CHEVROLET El Camino. Stick, radio, heater, Shurt. Private owner, \$1750. Phone days 376-8747. Nights, FA 8-8082.

1952 CHEVROLET 1/2 ton panel truck. \$150. 20814 So. Harvard

MUST sell by Dec. 25th. Due to death, 1962 Chevrolet Long bed 1/2 ton pickup. 251-1319

'55 VOLKSWAGEN pickup. Low miles. Top condition. Private party. \$885. DA 6-6214.

for Greatest Coverage in the Torrance Area! Use Herald Want Ads