

LIFE'S LIKE THAT

By FRED NEHEP



"I'm to write a composition on why I like Shakespeare . . . why couldn't she make it on Mickey Mantle or The Green Bay Packers!"

Know Your Traffic Laws

Prepared in cooperation with the Traffic Education Bureau of the Torrance Police Department

This past Sunday another life was lost in Torrance as a result of a traffic accident. As generally is the case, investigation shows that this accident could have been avoided and should not have occurred at all. Thus far this year three lives have been lost as a result of traffic accidents and investigation shows all three were caused by human error rather than a mechanical defect or breakdown.

FAILING TO yield the right of way is listed as the cause of this third fatality. This accident could have and would have been avoided had one of the parties involved shared the road and not taken advantage of another. Another factor involved is that one of the parties was not attentive to what he was doing, perhaps it would be correct to say he was not assuming his obligations as one of the better than eight million who use the streets and highways of California.

Right of way is best defined as the immediate use of the roadway and right of way must be earned and not taken. With better than eight million registered vehicles using the streets and highways of California, we must share the roadway and be willing to yield to those who have earned the right of way. We must be willing to yield even if the other party does not earn but takes the right of way.

RIGHT OF WAY violations are one of the leading causes of accidents, not only in Torrance, but also in the state. As drivers we must develop an attitude towards accepting our share of responsibility and doing what we as individuals can to eliminate traffic accidents. Traffic safety is everybody's business and the sooner we realize this and do our share the sooner we can reduce the number of persons injured and killed on our streets and highways.

Torrance received an award from the National Safety Council in 1961 for its pedestrian safety program, but the Traffic Department urges more citizen awareness to the danger of crossing a street in an area not designated for pedestrian use.

Numerous pedestrian violations are observed each week and in many cases near accidents occur. It is strongly recommended by the department that all persons observe the following:

1. Cross streets only at corners using cross walks.
2. Obey all traffic signals and signs.
3. Walk on sidewalks, not on the roadway. Where there are no sidewalks, walk on shoulder of road facing traffic. If walking at night wear light colored clothing.
4. Never stand in roadway and hitch hike.

BOX SCORES

Month	1961			
	Total Accidents	Non-injury Accidents	Injury Accidents	Fatalities
Jan.	97	57	39	1
Feb.	90	44	43	3
March	107	64	43	0
April	93	49	43	1
May	95	55	40	0
June	89	50	39	0
July	92	59	33	0
Aug.	87	54	33	0
Sept.	108	62	44	2
Oct.	94	59	35	0
	952	553	392	7

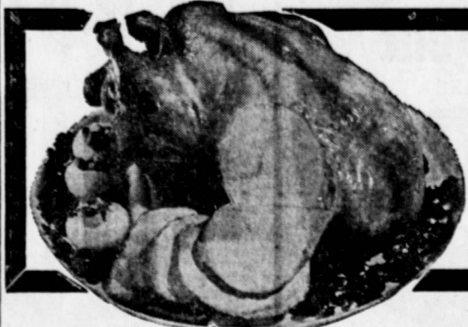
Month	1962			
	Total Accidents	Non-injury Accidents	Injury Accidents	Fatalities
Jan.	79	33	46	0
Feb.	83	48	35	0
March	111	46	65	0
April	97	56	41	0
May	117	69	48	0
June	102	63	39	0
July	108	72	35	1
Aug.	86	55	30	0
Sept.	94	47	38	0
Oct.	117	66	51	1
	982	543	417	2

BIG BEAR FOODS OVER 5000 'TIAS

We have taken the cost of stamps, gimmicks, and premiums, out of food prices, and passed the savings on to you with a lower total food bill!

Compare the totals! You will save more at Big Bear Foods! . . . When a market makes reductions on just a few items, it means higher prices on hundreds of other items.

DISCOUNT PRICING ON FOOD & ALL S



YOUNG TOM TURKEYS
29^c lb.

- LEG of LAMB 69^c** lb
LAMB SHOULDER 42^h
RIB LAMB CHOPS 1.08^h
SMALL LOIN LAMB CHOPS 1.28^h
LARGE LOIN LAMB CHOPS . 78^h
SHOULDER LAMB CHOPS . 78^h

- RIB ROAST 78^c** lb
SIRLOIN STEAK 84^h
T-BONE STEAK 98^h
PORTERHOUSE STEAK . 1.09^h
TOP SIRLOIN 1.38^h Boneless Steak
RIB STEAK 84^h

- BLADE CUT
CHUCK ROAST 42^c lb
CROSS RIB ROAST - Boneless 78^h
RUMP ROAST 74^h
SIRLOIN TIP ROAST 88^h
RIB FILET STEAK 1.38^h
SLICED BACON 58^h

- WHOLE BODY FRYING CHICKEN
FRYERS 29^c lb
FRYING CHICKEN BREAST . 62^h
FRYING CHICKEN LEGS . . 58^h
FRYING CHICKEN THIGHS . 58^h
STEWING CHICKEN Cut-up 28^h
FRYING RABBITS 58^h

HEALTH & BEAUTY AIDS, HOUSEWARES & SUNDRIES

- FRENCH TENCH — 13-OZ. SIZE
HAIR SPRAY 75^c
 SET MAGIC — 13-OZ. SIZE
HAIR SPRAY 65^c
 TONI
HOME PERMANENT . . . \$1.65
 VO-5 — 8-OZ. SIZE
HAIR SET LOTION . . . \$1.25
 ROBERT PECK — 16-OZ. SIZE
EGG SHAMPOO 45^c
 PRELL — SMALL SIZE
LIQUID SHAMPOO 53^c
 MAYBELINE
EYE MAKE-UP 85^c
 ARRID — LARGE SIZE
WHIRL-IN DEODORANT . 89^c
 NOXEMA — SMALL SIZE
SKIN LOTION 49^c
 LARGE SIZE
LADY ESTHER CREAM . 65^c
 JOHNSON & JOHNSON
COTTON SWABS 47^c
 MENNEN'S — SMALL SIZE
BABY MAGIC 55^c
 REGULAR or SUPER
MODES TAMPONS 35^c
 ALL WIDTHS
CURAD BAND-AIDS 59^c
 PINT
RUBBING ALCOHOL 17^c
 VICKS
"44" COUGH SYRUP . . . 89^c
 PERTUSSIN
VAPORIZER \$1.00
 LARGE SIZE
ALKA-SELTZER 49^c
 GREEN MINT — SMALL SIZE
MOUTHWASH 45^c
 COLGATE — FLUORIDE — GIANT SIZE
TOOTHPASTE 47^c
 IPANA — ECONOMY SIZE
TOOTHPASTE 59^c
 POLIDENT — LARGE SIZE
DENTURE CLEANER 57^c
 54-INCH
IRON BOARD COVER . . . 79^c

- LARGE
CLOTHES DAMPENING BAG 69^c
 MORGAN JONES — 13 x 17
DISH CLOTH 17^c
 24 COUNT
CHIX CHEESE CLOTH . . . 17^c
NYLON BASTER 49^c
 20-LB.
OVAL ROASTERS \$2.15
TURKEY LACERS 8^c
 12-CUP
ALUMINUM MUFFIN PAN . 75^c
 9-INCH
ALUMINUM CAKE PAN . 39^c
 12-INCH
MILK GLASS CAKE PLATE . 89^c
MILK GLASS FRUIT BOWL . 89^c
 EVEREADY
FLASHLITE BATTERIES . . 12^c
 GENERAL ELECTRIC — 9-FOOT
EXTENSION CORD 49^c
 ALL COLORS
RIT DYE 28^c
 EMPIRE — 6 x 9
WRITING TABLET 33^c
 EMPIRE — 100 COUNT — 6 1/4-INCH
ENVELOPES 33^c
SKRIP INK 20^c
 1/4 x 200
SCOTCH TAPE 20^c
ROASTING PAN W-RACK \$2.99
 ALUMINUM — 6-FOOT
CHRISTMAS TREE \$7.88
 CHILDREN'S — SIZES 3 TO 6x
CAR COATS \$2.88
 LADIES — SIZES 8 TO 18
CAPRI & BLOUSE SET . \$1.99
 AUTOMATIC
TOOTH BRUSH \$5.44

- DUBUQUE
CANNED HAM 3⁸⁸
 5-lb. Can
HAM — Shank Portion . . 42^h
BUTT PORTION HAM . . . 52^h
PORK CHOPS — Blade Cut . 48^h
RIB PORK CHOPS 88^h
SMOKED PICNICS 38^h
PORK SHOULDER ROAST . 38^h
- ROUND STEAK 78^c** lb
CHUCK STEAK 52^h
SIRLOIN TIP STEAK 92^h
CUBE STEAK 98^h
BONELESS ROUND STEAK . 88^h
MANHATTAN FRANKS . . . 39^h

- GROUND BEEF 38^c** lb
GROUND CHUCK 48^h
GROUND ROUND 74^h
SHORT RIBS OF BEEF . . . 28^h
BRISKET CORNED BEEF . . 78^h
CENTER CUT HAM SLICES . 98^h

BIG BEAR MEATS . . .
 All meat sold by Big Bear, is carefully selected by our buyers from the finest U.S.D.A. Grades . . . Properly aged to assure you tenderness and finer flavor . . . Every cut is expertly trimmed of excess bone and fat in Big Bear's unique trimming style to give you more meat for your food dollar.

BIG BEAR GUARANTEE . . .
 Guaranteed for flavor and tenderness. If for any reason you are not completely satisfied, simply return the package and your money will be cheerfully refunded. And in adherence to Big Bear's pricing policy, you will enjoy this fine meat at a lower cost.

Decorate Your Holiday Food Table With These Wonderful Fruits and Vegetables!

EXTRA FANCY STARKING DELICIOUS APPLES 2 lbs 25^c
 Very finest large size table apple . . .

NO. 1 QUALITY MIXED NUTS 3 lbs \$1
 Fresh, new crop . . .

VELVET YAMS 3 lbs 25^c
 Holiday companion . . . with the Turkey feast.

STORE HOURS:
 MONDAY THRU FRIDAY 12 NOON TO 9 P.M.
 SATURDAY AND SUNDAY 10 A.M. TO 7 P.M.

PRICE PROTECTION FOR YOU . . .
 In the event wholesale costs decline, Big Bear Foods will immediately reduce retail prices further.

3860 SEPULVEDA B
 SOUTHWEST CORNER OF SEPULVEDA

Be comfortable and confident!

H-I-G
 100% NYLON
 SANITARY PANTIES

\$1.59

THRIFTY Cut Rate DRUG STORES