

New W. T. Grant Store to Open Here This Morning

Ernest Q. Brazel, manager, will open the doors of the new Grant Department Store at Carson Shopping Center to the public today at 9:30.

A Torrance resident, Brazel has been with the Grants the past 14 years and in Los Angeles area the past six. He is married and has three chil-

dren, two boys and a girl, 15, 9, and 2 years old.

Quality first will be the policy of the new store, following through the pattern established by the Grant Chain, according to Brazel.

A STAFF of 68 buyers, each an expert in a particular type

of merchandise, devotes full attention to market trends to see that customers get the newest proven performance fabrics and constructions. Tough laboratory tests to prove an article's worthiness are given before the buyer will commit the company to a purchase order.

Grant's three-plan credit program, now used by more than two million families, is in effect at the Carson store.

THERE IS the Grant's 30-day charge account. The purchaser pays his full account at the end of each month, but with the aid of Grant's instant credit recorder form, sales are recorded each time, and the purchaser knows his total bill.

There is no end-of-the-month shock. Also, this may be converted into a monthly payment account, if the budget is short, to spread payments over a period of months.

The credit coupon plan af-

fords shoppers credit coupons which can be spent like cash. Regular payments are made to fit individual budgets and the coupons are replenished as payments are made.

SPECIAL accounts for larger purchases extend for 24 months with no down payment. Boys and girls, ages 5 to 15, will have their own special shops at the new store. A staff of buyers in New York concentrates full attention to the selection of the newest fashion fabrics and guides the styling workmanship to give children in this age group clothes that will fit and be attractive to them. Range of prices in these shops will not differ from those in other departments.

CUSTOMERS at the new store will select their needs from open counters to facilitate shopping speed.

The store, however, is not "self-service in the supermarket sense" because a complete staff of trained sales people will be ready to render service whenever desired.

Who Has 'Smile Of the Year'?

Recently the A8 and B9 science classes of Stephen M. White began its dental program. The dentist of this program is Dr. Virginia Tyler.

Dr. Tyler will select six boys and six girls with the most attractive teeth and present them with a dental certificate.

Then she will select one boy and one girl out of these 12 students to have the honor of representing Stephen M. White Junior High in the Smile of the Year contest, which will be joined by other schools in the Harbor area. For this honor, each boy and girl will also receive a trophy.



ERNEST Q. BRAZEL
Opening New Store



OPENING TODAY . . . Ribbon-cutting ceremonies for the new W. T. Grant Store in the Carson Shopping Center at Carson Street and Normandie Avenue have been scheduled for 9:15 a.m. today with city and community leaders helping Manager Ernest Q. Brazel launch the new business. Special advertising values offered during the opening can be found today on page 16.

The World's Largest Selection of GIFTS AT ONE PRICE 88¢



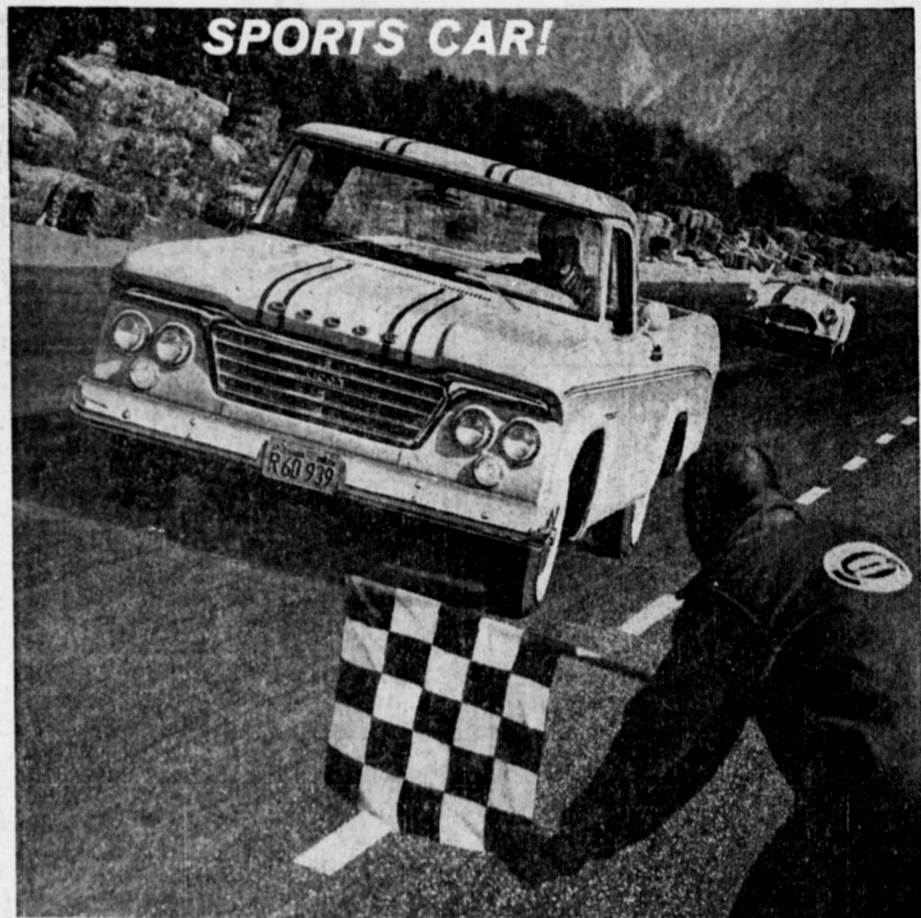
CHRISTMAS DOES NOT HAVE TO BE EXPENSIVE!

We believe that our selection of unique Christmas Gifts is the largest one-price collection in the world . . . thousands of interesting items and nothing over 88c. Visit us soon for a very enjoyable shopping experience.

THE 8,000 ITEMS 88¢ AT ONE PRICE STORES

1423 Marcelina, Downtown Torrance
OPEN FRIDAY EVES. 'TIL 9 AND OPEN DAILY 9:30 TO 5:30

THE 1963 DODGE PICKUP PERFORMS LIKE A SPORTS CAR!



Van Nuys, Calif.—Norman C. Thatcher, racing's elder statesman, champion racing driver for 49 years, holder of world racing records at Bonneville and other tracks, says,

"The '63 Dodge Pickup performs like a sports car! The way she accelerates, corners and holds up under rugged conditions, sold me. So, when you get so much—PLUS that warranty there's no question Dodge Trucks have to be first choice."

the ONLY pickup with a... 5 YEAR/50,000 MILE WARRANTY!

Take the new '63 Dodge Pickup Truck around the fastest track... the sharpest curves... or a country road. It performs like a sports car! Get the Big Performer in the pickup field! All this, PLUS the security that only Dodge gives you a 5 year/50,000 mile warranty! And the big V-8 or economy Slant-6 engines can really set big load records, anywhere. Dodge is the big performer at the low-slung price. So right now, get ready, set and go Dodge. You'll win on any terms at your Dependable Dodge Dealer.

the performance champion of 1963!

*Your authorized Dodge Dealer's Warranty against defects in material and workmanship on 1963 cars has been expanded to include parts replacement or repair for high years or 50,000 miles, whichever comes first; an engine block, head and internal parts; transmission case and internal parts (excluding manual clutch); torque converter, driveshaft, universal joints (excluding dust covers), rear axle and differential, and rear wheel bearings, provided the vehicle has been serviced at reasonable intervals according to the Dodge Certified Car Care schedule. Factory approved remanufactured parts may be used for replacement. Trucks are subject to additional limitations of 1500 hours operation if mileage does not accurately reflect the extent of actual use and operation of parts covered by the warranty. Coverage will not apply to trucks subjected to prolonged power-take-off or off-highway use.

SEE IT TODAY! AT YOUR DEPENDABLE DODGE DEALER BELOW:

SUBURBAN MOTORS

445 E. Anaheim Street

TErminAl 4-8595

Wilmington

Famous 'Terri-Lee' Dolls Find New Home in Gardena

"Terri Lee has just moved all her clothes and playmates to her new home at I & S Industries, 2134 Rosecrans Ave., Gardena.

To celebrate their arrival in this area, Murray Sands, president, and Samuel Longo, vice president, have announced their intention to sell 15,000 "Terri Lee" Dolls right at their factory, at factory discount prices. The opening dates will be Friday, Nov. 16th, starting at 6 p.m. and continuing all day Saturday and Sunday, Nov. 17 and 18. From then on until Christmas they will be open daily from 10 a.m. to 6 p.m.

DURING THE opening days celebration, free sno cones, cotton candy, and many "Terri Lee" dolls will be given away. "We feel that because we are now a vital part of this

therefore we will have a special booth open in the rear of our growing community, we would like each child in the area to have a "Terri Lee" doll.

"TERRI LEE" talks, sings, tells bedtime stories, and is unlimited in what she can say.

"Terri Lee" is nationally advertised as well as being on Art Linkletter's CBS-TV "House Party."

"Terri Lee" clothes are patterned on the advice of world known fashion experts. They even make a mink fur coat for her.

In addition to "Terri Lee" dolls, I & S Industries is engaged in the manufacture of various other dolls equally as beautiful.

Sands and Longo want to publicly thank the many high school students who are working part time on Saturdays and

John Birch Congressman Here Tonight

Congressman Edgar W. Hiestand, an avowed member of the John Birch Society, will speak to members of the South Bay Chapter of Californians for Goldwater at the Smith Bros. Fish Shanty in Waverly at 8 tonight.

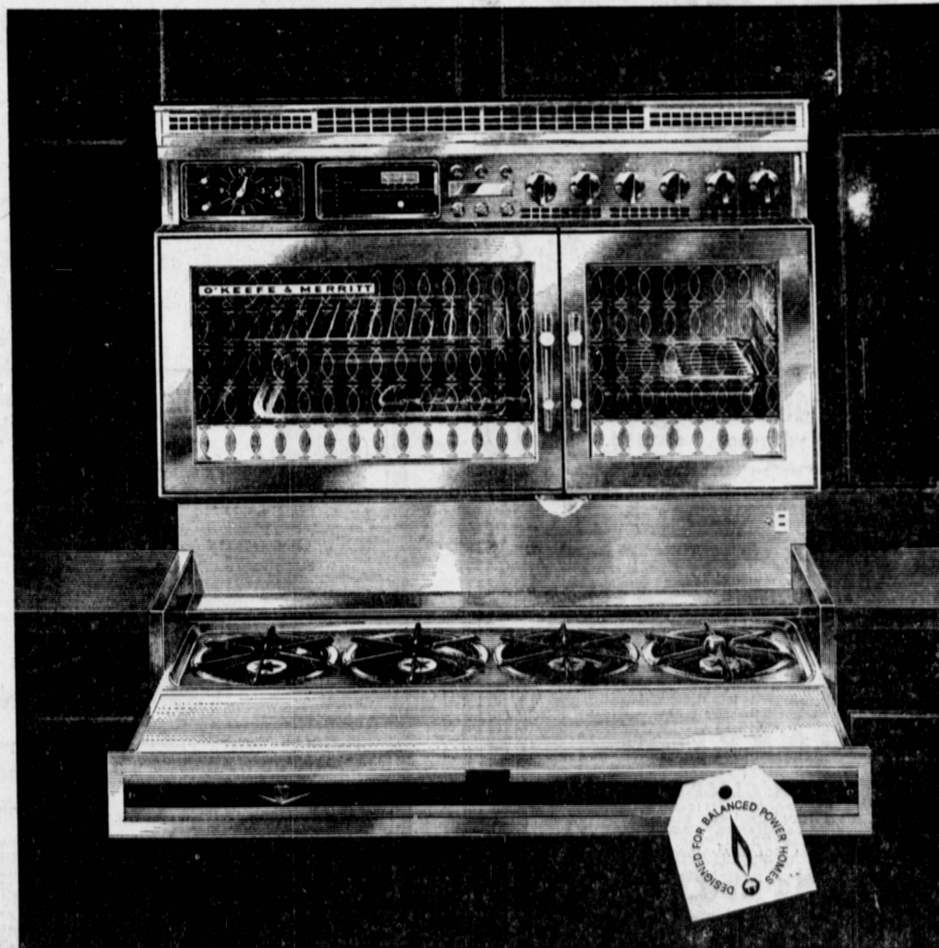
Congressman Hiestand, a highly successful businessman before turning to public service, was one of three Southern California Congressmen whose membership in the John Birch Society was a campaign issue. Each of the three were defeated Nov. 6.

The public is invited to attend the meeting. President Dick Wade said.

Sundays to meet the demands of the heavy rush of business as a result of the homecoming holidays.

ANNOUNCING THE NEW "CONTEMPO" GAS RANGE BY O'KEEFE & MERRITT

Hangs on the wall or installs on a standard base cabinet for that built-in look. This versatile beauty delivers everything its good looks promise. Features? The finest: Glide-Away Cooking Counter, Eye-Level Baking and Broiling units, Automatic "Burner with a Brain," many more.



Check these new features:

Master Control Panel puts all the controls at convenient eye-level: clock timer, Roastmeter and rotisserie switches, oven and broiler thermostat controls, plus top-burner controls.

Automatic rotisserie brings the fun, flavor of outdoor cooking—indoors. Chrome-lined oven circulates fresh air for even baking; gives you faster cooking, more efficient low-temperature control.

New Glide-Away cooking counter slides in to conceal burners and become an easy-to-use, easy-to-clean food preparation center. "Burner with a Brain" ends pot-watching forever, foods can't stick, scorch. **Smokeless Grilleator Broiler** has 20 positions; adjusts with finger-tip control. And with Gas you broil with the door closed. Smoke and spatter are consumed in the Gas flame.

SOUTHERN CALIFORNIA GAS COMPANY