

# Tax on Small Boats May Have Choppy Seas Ahead

By VINCENT THOMAS  
 Assemblyman, 68th District  
 Choppy waters seem to lie ahead for proposals to change the system of taxing small boats. A notably cool reception was given a 1961 bill on the subject at a recent re-hearing on the measure by the Senate Revenue and Taxation Committee.

The proposal under consideration would have levied a flat-rate state tax of 2 per cent of market value on vessels using waters of the state, similar to the "in-lieu" tax levied on motor vehicles. The law permitting local taxation of boats as personal property would have been repealed, so the

only tax on boats would be the state levy. . . .  
**PROCEEDS OF THIS** new tax would be used for costs of administering the law, support of the small harbor program, and for grants to cities and counties "for the advancement and improvement" of waterways within their boundaries. At the present, proceeds of the taxes levied on boats by counties and cities are used for their gen-

eral governmental purposes, though some counties do pay for limited programs of boat supervision and safety. Representatives of a number of boating organizations appeared at the hearing. In general, their testimony indicated that they approve the principle of an in-lieu tax on boats, but do not favor many of the details of the 1961 bill as introduced. After their presentations, there was committee

comment that no one had really given the idea strong support. . . .  
**ONE SPOKESMAN** pointed out that as drafted the measure would apply to all vessels except seaplanes, to large passenger and freight vessels, fish-boats, and foreign privately owned vessels, even though there is now a constitutional exemption of all vessels of over 50 tons in size from local

property taxation. He also doubted the legality of cities and counties spending funds for the improvement of waterways, when most of them within the state are under federal control. He questioned local use of funds from boat taxes, and suggested further study of an in-lieu tax on vessels. Another spokesman made three points: 1) many counties contain waters heavily used by boats, but few vessels regis-

tered to tax for support of boat operation controls; 2) state law requires peace officers to enforce safety regulations, but there are no funds for enforcement; and 3) counties either lack or refuse to budget funds for proper safety enforcement. It was also emphasized that there is no coordinated information available as to number of boats actually assessed, or their value. Again, more study was recommended. . . .  
**AS HAD BEEN** anticipated, representatives of the cities, counties, local assessors, and existing harbor district attack-

ed the basic principle of substituting any state in-lieu tax on boats for the local ad-valorem tax. It was their contention the local agencies need the revenues for general governmental purposes. California, with its 280,000 registered, and estimated 30,000 more unregistered as yet, is fourth among the states in number of boats. However, statistics show it is Number One in boat accidents and damage. Our 1963 session will probably be busy trying to figure out the best way to pay for enforcement of safety regulations and improvement of waterways.

## Coin Club Meets

Wayne Dennis, NASC representative, gave a short report about the society's convention that will be held Jan. 30, 31, and Feb. 1, 2, 1963 at the Statler-Hilton Hotel at the October meeting of the Torrance Coin Club.

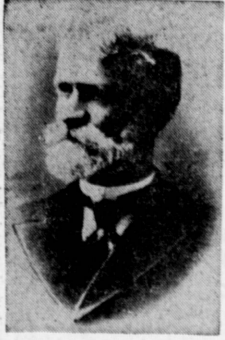
Leroy Borchardt, a member, discussed "Type Coins." Appointments included Mel Kohl, as nominating committee chairman; Bob Axelrod and Fred Jackson as assistants.

Next meeting will be held at 8 p.m., Nov. 20, 1316 Border St. Nominees for 1963 officers and board of governors will be slated.

## Dividend Declared

The board of directors of Armo Steel Corp., has declared a dividend of 75 cents per share of common stock. R. L. Gray, chairman, has announced.

The dividend is at the same rate as in previous quarters and will be payable Dec. 7 to shareholders on record Nov. 8.



ALMON STROWGER  
 The Girlless Telephone

## Invention Misfires, Creates Jobs

On the 70th anniversary of the installation of the world's first automatic telephone exchange, the girls at General Telephone Co. of California pause and thank Almon Strowger for inventing the "girlless" telephone.

Back in 1889, when he was plagued by poor service from telephone operators, irascible Strowger declared war on the girls and vowed to invent an automatic switchboard to replace them.

WHEN HIS invention proved successful in a demonstration at LaPorte, Ind., Nov. 3, 1892, Strowger gleefully exclaimed that, at last, this was "goodbye to the hello girls."

Actually Strowger's invention revolutionized the telephone industry and created more operators' jobs.

Operators are needed today to assist people in making the mountainous volume of calls made possible by automation. Then, too, the independent telephone industry has become an employer of women in a multitude of jobs other than operators.

Manufacturers of telephones and telephone equipment, for example, now employ thousands of women. Automatic Electric Co., the firm Strowger helped establish to produce his invention, today employs about 2,500 women at its manufacturing plant and offices in Northlake.

MANY THOUSANDS more are employed by Automatic Electric's parent company, General Telephone & Electronics Corp., and its other subsidiaries. General Telephone Co. of California, alone, employs over 4,500 women.

In California, GT&E subsidiaries include: General Telephone Co. of California in Santa Monica; General Telephone Directory Co. in Long Beach; Sunland-Tujunga Telephone Co. in Sunland; Lenkurt International Corp. and Lenkurt Electric Co. in San Carlos; Delta Telephone & Telegraph Co. in Courtland and Sylvania Electronics Systems, western operations, in Mountain View.



PRINCESS . . . Dianne Einspahr, junior business major from Torrance at Valparaiso University (Ind.) has been named to the court of Queen Gall Pitkanen for Valparaiso's annual homecoming. Dianne was the nominee of Tau Kappa Epsilon.

(Political Advertisement)  
 NON-PARTISAN COMMITTEE TO RETAIN RESPONSIBLE REPRESENTATION TORRANCE, CALIFORNIA

## WHO SPEAKS UP ON ISSUES?

Recent developments regarding Cuba have intensified the importance of taking a strong stand against the communist conspiracy. The Anti-Communism Voters League has approved Assemblyman Charles Edward Chapel for re-election because of his forthright and positive answers to vital questions.

Chapel, in answering the questions of the Anti-Communism Voters League long before the present Cuban crisis, said that he favors retaining loyalty oaths; favors blockading Cuba; advocates denying communists the use of tax-supported meeting places; insists that Red China should be barred from the United Nations; strongly supports the House Un-American Activities Committee; and upholds all legislation restricting the activities of the Communist Party.

The Anti-Communist Voters League is a non-profit, non-partisan organization, with headquarters at 739 North Highland Avenue, Los Angeles 38.

In contrast, the Los Angeles edition of the PEOPLE'S WORLD, in their issue of Saturday, Oct. 27, 1962, reported that a peace group has endorsed Assemblyman Chapel's opponent because of his "favorable" answers to such questions as "no more testing of nuclear weapons" and others in a similar vein.

Does anyone believe that the PEOPLE'S WORLD is a non-profit, non-partisan organization? Has Assemblyman Chapel's opponent "spoken up" on the true issues regarding our national survival? This is a time for responsibility.

RE-ELECT ASSEMBLYMAN CHARLES EDWARD CHAPEL  
 (Political Advertisement)

# TOY SALE AT SAV-ON

**\$1.00 HOLDS YOUR PURCHASE**

**RADIO "Tot" Wagon**  
 Sparkling Cloud White wheels, Seminole Red body . . . 5x1/2" molded tires cushion the bumps. Body is 20 1/4 x 10 1/4 x 13".  
**2.49**

**Chemistry Experiment Lab**  
 GILBERT . . . Ample chemicals and equipment to do hundreds of interesting, safe experiments in many fields. Steel chest and foam plastic tray.  
**3.88**

**Science Kits**  
 REMCO . . . Eight assorted kits designed to teach basic science in an atmosphere of play. Each kit contains fascinating experiments.  
**69c.**

**"Teensie" Tot Doll**  
 by HORSMAN . . . Assortment of 10 1/2" vinyl dolls, fully jointed with rooted curly hair, turning head. Attractive dresses with bonnets.  
**2.99**

**Gaylord... the pup**  
 IDEAL . . . He does practically anything a real dog can do . . . All movements controlled by leash. He even barks. 23" long & 7" high.  
**11.88**

**Cook'n Bake Set**  
 with Pressure Pan by MIRRO  
 Assortment of miniature aluminum utensils. Black handles on some pieces. Even includes a Brillo pad.  
**2.39**

**Musical Plush**  
 . . . Soft, cuddly plush animals in assorted gay colors, decorated with ribbons. Choice of Bear, Poodle, Puppy or Santa Claus.  
**2.88**

**Road Race** ELDON . . .  
 2 independently controlled cars race around an oval track. 12 pieces of track that snap together. 2 racers with electric motors.  
**4.99**

**Electric Football Game** by TUDOR  
 Unbelievably realistic! Players run, kick, pass, fumble, tackle & score. 3 dimension figures. Beautifully lithographed in four colors. Finest game of its kind. Use on AC only.  
**5.33**

**Neckties**  
 Select from over 1200 ties. Reg. width or "Slim Jims". Dacrons, rayons and acetates. Ass't. designs and colors.  
**2 for 1.00**

**Bottle Sterilizer**  
 EVENFLO . . . Regular or terminal sterilization. 8-bottle capacity, automatic steam release valve. Rust-proof rack.  
**2.69**

**Gauze Diapers**  
 CURITY . . . 2 1/2 x 40" with convenient fold line. Extra absorbent, quick drying.  
 Doz. **2.69**

**REMANUFACTURED Spark Plugs**  
 Champion-AC . . . Auto Lite guaranteed for 10,000 miles. Hand polished-electro luster plated.  
**8 for 1.33**

**Wall Plaques**  
 Silk screened grass-cloth. 29x13" size, framed in dark wood. Colorful horizontal or vertical designs.  
**1.98**

**SAV-ON Ice Cream**  
**Deluxe Hand Packed**  
 Rich, creamy ice cream in assorted flavors. You get up to 40% more when it's hand packed at SAV-ON.  
 Pint **30c**  
 Quart **59c**

**1/2 Gallon Ice Cream**  
 ARDEN OR CARNATION Assorted Flavors **79c**

**SAV-ON COSMETICS**  
**Hormone Hand Cream**  
 Dorothy Gray . . . Moisturizing action . . . gives hands a softer, younger look. 4 oz. Reg. 2.50 **1.25**

**April Showers**  
 SKIN BALM . . . Restores moisture to skin after exposure to wind or detergents. 12 oz. **1.00**

**Four Seasons**  
 Hand & Body Lotion Enriched with lecithin and lanolin for year-round skin protection. **1.00**

**Glycerine & Rosewater**  
 Hand Cream by Century Protects skin against all weather conditions. Excellent powder base. 2.00 Value **1.69**

**Beauty Salon**  
 HAIR SPRAY . . . Preferred by professionals. Does not contain any lacquer. 14 oz. **69c**

**Nutri-Tonic**  
 CREME SHAMPOO  
 The Shampoo with Cholesterol 2.18 Value **1.19**  
 19 pound jar The Heart of Lanolin

**IVORY** Liquid FREE Sponge with purchase of King Size bottle. **89c**

**ZEST SOAP** FREE Holiday Corsage with purchase of 5 complexion size bars. **69c**

**SAV-ON** Beautiful Nails in Minutes with **JERANTS**  
 The Perfect Nail Conditioner  
**6 Minute CREME NAIL TREATMENT**  
 • Hardens Nails  
 • Promotes Growth  
 • Stops Splitting  
**1.95**

**Every Woman** WANTS THIS PROTECTION  
 the feminine hygienic powder that  
 1. CLEANSSES  
 2. SOOTHES  
 3. DEODORIZES  
 4. REFRESHES  
**TAKARA** DOUCHE POWDER  
 The Aristocrat of Feminine Hygienic Products  
 FREE Flaconette of fine quality Perfume See label for details  
 12 oz. Reg. 2.00 **1.69** 5 oz. Reg. 1.00 **79c**

**Ice Cream Tooth Brushes**  
 by TEK . . . in popular ice cream flavors. Makes brushing fun.  
 Childs—33c Value **3 for 29c**  
 Youths—39c Value

**SAV-ON**  
 5020 W. 190th St., Torrance  
 3 Blocks W. of Hawthorne Blvd.  
**DRUG STORES**  
 OPEN 9 AM-10 PM . . . 7 DAYS A WEEK

**SAV-ON DRUG NEEDS**  
**Hot Water Bottle**  
 "Challenge" — 2 Qt. size. Red color with embossed surface. White Stopper. Quilted Boxed. **98c**

**Folding Syringe**  
 Faultless... Red latex with a 2 qt. capacity. Threaded syringe fittings. Quilted carrying case. #127 Reg. 2.69 **1.69**

**Bromo Seltzer**  
 Relief of minor nervous tension, headaches & upset stomach. Economy Size.  
 Reg. 98c **83c**

**VICKS Vapo Rub**  
 Deep penetrating vapor medication for relief due to colds.  
 Reg. 89c **73c**

**89c Listerine**  
 ANTISEPTIC . . . mouth wash. Kills germs on contact.  
 12 oz. **69c**

**1.49 Maalox**  
 ANTACID . . . for relief of gastric hyperacidity.  
 12 oz. **98c**

**TIDE**  
 Now! Improved. For dishes, fine fabrics . . . Giant Size **79c**

**JOHNSON & JOHNSON Baby Oil**  
 Cleans, soothes & protects from skin irritation.  
 Reg. 98c **69c**

**Sanitary Protection TAMPAX**  
 Feel cool, clean, fresh. Regular or Super.  
 Reg. 1.59 **98c**  
 Box of 40

**LOOSE LEAF Filler Paper or Typewriter Paper**  
 500 Sheets **98c**

**Playing Cards**  
 • Ivory Finish • Ass't. Designs • Multi-Colors  
**2 Decks 88c**

**Spray, Steam & Dry Iron**  
 WESTINGHOUSE . . . Just dial the fabric you want. White handle.  
**8.88**  
 #15-5214-W

**SAV-ON** Beautiful Nails in Minutes with **JERANTS**  
 The Perfect Nail Conditioner  
**6 Minute CREME NAIL TREATMENT**  
 • Hardens Nails  
 • Promotes Growth  
 • Stops Splitting  
**1.95**

**Ice Cream Tooth Brushes**  
 by TEK . . . in popular ice cream flavors. Makes brushing fun.  
 Childs—33c Value **3 for 29c**  
 Youths—39c Value

**SAV-ON**  
 5020 W. 190th St., Torrance  
 3 Blocks W. of Hawthorne Blvd.  
**DRUG STORES**  
 OPEN 9 AM-10 PM . . . 7 DAYS A WEEK



If You Are A Newcomer to Torrance Call **DORIS STAMM** DA 7-9193 for a visit from Welcome Wagon