

SANTA MARIA BRAND CANNED VEGETABLE SALE
MIX 'EM OR MATCH 'EM . . .

- ★ JUNE PEAS ★ PEAS & CARROTS
- ★ RED KIDNEY BEANS ★ RED BEANS
- ★ BUTTER BEANS ★ PORK & BEANS
- ★ REFRIED BEANS ★ 303 CANS

10 for **\$1⁰⁰**

NORLEY'S



1330 EL PRADO

Open Sunday, 10 A.M. to 2 P.M.
Mon., Thurs., Fri., 9 A.M. to 9 P.M.
Tues., Wed., Sat., 9 A.M. to 7 P.M.

DOWNTOWN TORRANCE

C.H.B. PURE
SAFFLOWER OIL
24-oz. Bottle — SAVE 30¢
39¢

Golden Creme CREAM PAK
ICE CREAM
½ GAL. **49¢**

Golden Creme MEDIUM AA
EGGS
38¢ doz

TOYS! TOYS! WE HAVE OVER 100 ITEMS TO CHOOSE FROM! (Check Our Low Prices • \$1.00 HOLDS ANY ITEM 'TIL DEC 15)

Delicatessen
PILLSBURY CAN BISCUITS
6 FOR 49¢
GALILEO'S — 3-oz. **ITALIAN SALAMI 3 for \$1**

HEMET CALIFORNIA — 303 CAN **GOLDEN YAMS 6 FOR \$1.00**
WHITE KING "D" — With Borox - Giant **DETERGENT 55¢**
PUSS & BOOTS — 15-OZ. CAN **CAT FOOD 2 FOR 31¢**
HEMET COLOSSAL — NO. 1 TALL **RIPE OLIVES 3 FOR \$1.00**
SPRINGFIELD **PEANUT BUTTER 3 lb. Jar \$1.00**
LIPTON'S — 48 COUNT **TEA BAGS 65¢**
TREND LIQUID **DETERGENT 59¢**

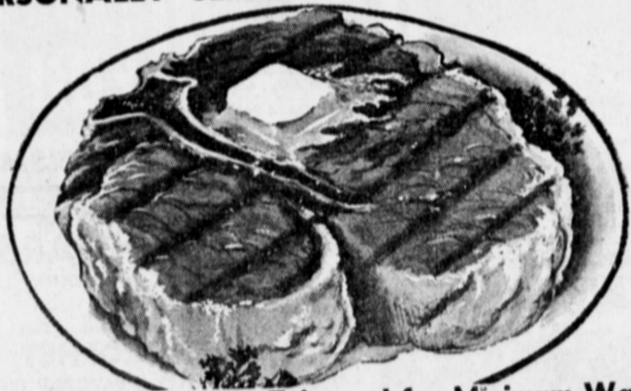
EXTRA FANCY BARTLETT
PEARS
2 **25¢** lbs.

FANCY GOLDEN DELICIOUS
APPLES
1.10 lb

SPANISH
ONIONS
3 **14¢** lbs.

STEAK SALE

PERSONALLY SELECTED STEER BEEF



Steer Beef Expertly Trimmed for Minimum Waste! Perfectly Aged

FULL SIDE BEEF **49¢** lb.
HINDQUARTERS **59¢** lb.
Cul, Wrap, Freeze Free

Porterhouse STEAKS 98¢ lb.
T-BONE STEAKS 89¢ lb.
100% GUAR.

BONELESS NEW YORK or **SPENCER STEAKS \$1.29** lb.
BONELESS **TOP SIRLOIN STEAKS \$1.29** lb.

2nd BIG WEEK — WE REPEAT

OUR 1ST **Anniversary**
FOR THOSE WHO COULD NOT MAKE IT LAST WEEK . . . WE ARE CONTINUING THIS BIG SALE!
— SPECIALS ALSO EFFECTIVE AT NORLEY'S MARKET —

FULL Young Steer **LOINS** WELL AGED **79¢** lb.
ALL THESE EXTRA CHOICE CUTS Cut & Wrapped to Your Specification
• TOP SIRLOIN
• NEW YORK
• FILET
• T-BONE
• PORTERHOUSE STEAK

YOUNG HEN **Turkeys 39¢** lb.
EASTERN **PORK ROAST 29¢** lb.

FRESH, LEAN **GROUND BEEF**
3 LBS. \$1.00 FOR

PLAZA QUALITY WHOLESALE MEATS
ROLLING HILLS PLAZA SHOPPING CENTER
CRENSHAW AND PACIFIC COAST HWY. NOV. 1 TO NOV. 7, 1962 DA 5-2782