

LEONARDS

CELEBRATING ...

4 DAY SPECTACULAR!

STARTS THURSDAY!

GRAND OPENING

PRICES EFFECTIVE NOV. 1, 2, 3, 4

NEW TORRANCE STORE!

CORNER CRENSHAW AND PACIFIC COAST HIGHWAY 25405 CRENSHAW BLVD. TORRANCE

DISCOUNT SUPERMARKET

featuring America's finest brand foods at "EVERYDAY" DISCOUNT PRICES!

FRESH, LARGE, AA

EGGS

35^c Dozen



DOUBLE BREASTED OR FOUR LEGGED

FRYERS

39^c lb.

FRYER LEGS

45^c lb.

FRYER BREASTS

49^c lb.

BEST OF THE

FRYER

43^c lb.

Legs/Breasts/Thighs/Wings

TAKE YOUR PICK!

OLD SOUTH • 6-oz. can
FROZEN ORANGE
JUICE

8^c FOR \$1

CHIFFON • FACIAL
TISSUE

5^c FOR

CARNATION LIGHT
CHUNK TUNA

5^c FOR

LEONARDS "SPARKLING FRESH"

U.S.D.A. GRADE A

FRYING CHICKENS

WHOLE

Cut Up FRYERS . . . 31^c lb.

27^c lb.

PRIMERO • BROKEN • SLICED
PINEAPPLE

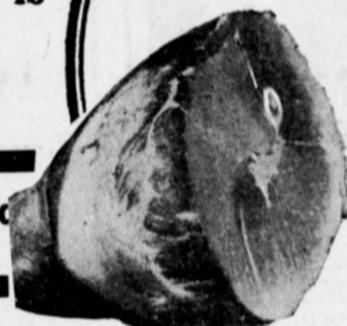
2 1-lb. Cans **29^c**

LUER'S COOKED HAMS

FIRST QUALITY

FULL SHANK HALF

35^c lb.



BUTT END

45^c lb.

Whole Hams

45^c lb.

CENTER SLICES

89^c lb.

CANADIAN
McINTOSH

APPLES 10^c lb.



OUR "EVERYDAY PRICES" ARE LOWER THAN LEADING SUPERMARKETS!

Join the big celebration! Feast yourself to the finest foods at the lowest prices! Choicest meats! Freshest produce! . . . Convenient 'one-stop' speedy service! Come in today! Compare!

NORTHERN
BRUSSEL SPROUTS

2 LBS. FOR **15^c**

LARGE SLICING
Tomatoes

2 LBS. FOR **19^c**

SWEET NEW CROP
CARROTS

5^c -LB. BAG

CHB
24-OZ. BOTTLE
MAYONNAISE
29^c

Grand Opening Special!

FARMER JOHN

BACON

49^c lb.

FIRST QUALITY



OPEN NIGHTS AND SUNDAYS

MANHATTAN TASTY • TENDER
FRANKS

35^c lb.

KRAFT Sliced • American
CHEESE

12-OZ PKG. **39^c**

DUBUQUE SLICED • COOKED
HAM

4-OZ. PKG. **39^c**

RATHS SLICED
BOLOGNA

49^c Lb. Pkg.



HERE IN PERSON!
SATURDAY, NOV. 3 AT 4 P.M.
ENGINEER BILL

Bill Stulla . . . "Engineer Bill" of TV fame will make a personal appearance here at Leonard's Torrance store . . . Sat., Nov. 3 at 4 p.m. COME ON OUT & MEET HIM!

ACRES OF FREE PARKING

LEONARDS

THESE SUPERMARKET PRICES EFFECTIVE NOV. 1, 2, 3, 4 AT
TORRANCE STORE ONLY

25405 CRENSHAW BLVD. — TORRANCE
CORNER CRENSHAW BLVD. AND PACIFIC COAST HIGHWAY