



**GOLDEN CREME
Ranch Style
BREAD**

5 for 1⁰⁰

NORLEY'S



**1330
El Prado
DOWNTOWN
TORRANCE**

OPEN SUNDAY
10 A.M.-2 P.M.
MON., THURS.,
FRI.
9 A.M.-9 P.M.
TUES., WED.,
SAT.
9 A.M.-7 P.M.

MIRACLE WHIP
**SALAD
DRESSING**
49^c qt.

FOLGER'S — 10-OZ.
INSTANT COFFEE **99^c**
TENDER LEAF — REG. 69c
48 TEA BAGS **49^c**

FOLGER'S
COFFEE
REGULAR or DRIP
1-lb. Can **59^c**
2-lb. Can **\$1¹⁷**

DELICATESSEN

MORRELL'S
ALL MEAT
FRANKS
2 Pkgs. **79^c**

NIBLETS
Whole Kernel
CORN
12-oz. Can **16^c**

GOLDEN CREME
Cream Pac
ICE CREAM
Gal. **49^c**

LAURY'S — 1½-OZ. PKG.
SPAGHETTI SAUCE **2³⁹^c**
NORTHERN — 300 COUNT
FACIAL TISSUE **5¹⁰⁰**

SPRINGFIELD — 303
APPLE SAUCE
7¹⁰⁰

U.S. NO. 1 RUSSET
Potatoes **10³⁹^c**

Crisp Juicy Fancy
JONATHAN

APPLES

2 lbs. 25^c

Sweet Sugar Ripe
SEEDLESS GRAPES
2 lbs. 25^c

Sweet Red Ripe
WATERMELONS
3½^c lb

Garden Fresh Green
CABBAGE
4^c lb

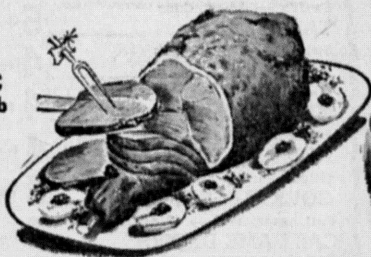
Sweet Spanish
ONIONS
2 lbs. 9^c

C & H SUGAR — 5-lb. bag 54c — 10-lbs. 1.07
CHICKEN OF THE SEA TUNA - Green Label 35c
NORTHERN BATHROOM TISSUE - 4-pk. 39c
PACIFIC HONEY GRAHAMS - 1-lb Box 35c
SWANSON'S FROZEN DINNERS 65c
TREND LIQUID DETERGENT 69c
ORCHID PAPER NAPKINS 2 for 25c
SCOTTIES FACIAL TISSUE - 400 Count 4 for \$1
GLORIETTA TOMATO JUICE - 46-oz. 31c
SCOTTOWELS - Jumbo Size 33c

WILSHIRE DOODLE DANDY
DILL & KOSHER DILL
PICKLES
24-OZ. JAR
29^c

PERSONALLY SELECTED

LEG OF LAMB **59^c lb**



GENUINE 1962 SPRING LAMB
"There's a difference in taste & tenderness"
LAMB CHOPS **59^c lb.**
Blade or Pin Bone Shoulder

Tasty Young Spring Lamb
LAMB SHOULDER ROAST

Square Cut . . . Neck Off
A Tasty Roast . . . Fine for
Shish Kebob **33^c lb**

SMALL LOIN
CHOPS
Tops to Broil
98^c lb

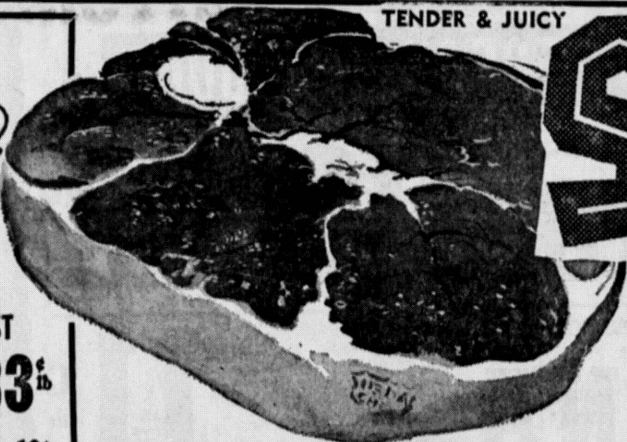
LARGE LOIN
OR RIB
Tender, Tasty
79^c lb

RIB EYE
CHOPS
Lean & Meaty
93^c lb

SHOULDER
CHOPS
Round or T-Bone
69^c lb

Lamb Breast
Lamb Necks
Lamb Shanks

STUFF
& BAKE
TRY THEM
CURRIED
BAKE OR
BRAISE
12^c lb
23^c lb
33^c lb



TENDER & JUICY

STEAK

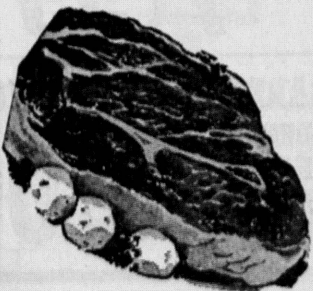
FULL CENTER CUT, SMALL O-BONE
ROUND STEAK

OR
BONELESS
**SWISS
STEAK**

69^c lb

PERSONALLY SELECTED STEER BEEF

7-Bone ROAST



Here is the fine beef aged to eating perfection and trimmed of excess fat before weighing. You'll find these superb meats this week's outstanding meat buy. They are downright delicious when slowly cooked in moist heat. Serve pot roast with vegetables this weekend—it's sure to make a hit with the family.

Best Center Cut
NONE HIGHER

49^c lb

CHUCK STEAK 45c lb.

ALL MEAT
Wieners
and
Bologna
39^c lb

**RUMP
ROAST**

Bone-
in **69^c lb.**

BONELESS
**CLOD
ROAST**
79^c lb

**Porterhouse
STEAKS**

100%
GUAR.

PER LB.

109

**T-BONE
STEAKS**

100%
GUAR.

98^c lb

BONELESS NEW YORK or
SPENCER STEAKS

\$1³⁹

BONELESS
TOP SIRLOIN STEAKS

\$1²⁹



**PLAZA QUALITY
WHOLESALE MEATS**

OPEN SUNDAY
Thru Wednesday
9 A.M. to 6 P.M.
Thursday, Friday,
Saturday
9 A.M. to 9 P.M.

THESE
PRICES
ALSO
EFFECTIVE
AT
NORLEY'S
MARKET

ROLLING HILLS PLAZA SHOPPING CENTER
CRENSHAW AND PACIFIC COAST HWY. DA 5-2782
FILL YOUR FREEZER! NO PRICE INCREASE

2507 PACIFIC COAST HIGHWAY
PERSONALLY SELECTED STEER
BEEF AND EASTERN PORK
PRICES GOOD SEPT. 13-19