

### FRAGAL LISBON WINE

A gaily light, sweet wine imported from the enchanting land of Portugal, in an attractive wicker covered bottle.

Full fifth. **99¢**



We're in rare spirits!

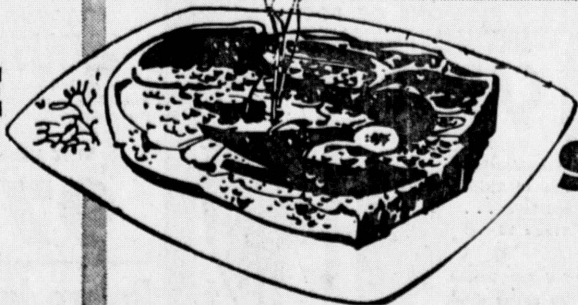
Wine has worked its flavor-magic at the tables of the great from time immemorial. Select your own magic Bacchus-brew from Magic Chef's tremendous selection of fine imported and domestic wines. Here you will find the South Bay Area's largest and most complete assortment of wines, beers, liquors and liqueurs, chosen for you from around the world!

Check the large Vintage Chart in our liquor department for the best years for wine and your selections from Magic Chef will rate encores!

GUARANTEED MEATS

FOR BRIGHTER WASHES  
**GIANT SIZE TIDE**  
59¢

giant pkg.



U.S.D.A. "CHOICE" STEER BEEF

**O-BONE SWISS STEAK**  
69¢ lb.

U.S.D.A. "CHOICE" STEER BEEF

**RIB STEAK**  
95¢ lb.

U.S.D.A. "CHOICE" STEER BEEF

**CLUB STEAK**  
\$1.09 lb.

U.S.D.A. "CHOICE" STEER BEEF

**CHUCK ROAST**  
45¢ lb.

U.S.D.A. "CHOICE" STEER BEEF

**CHUCK STEAK**  
49¢ lb.



FRESH GROUND HOURLY FOR HIGHEST QUALITY

**Ground Beef**  
39¢ lb.

U.S.D.A. GRADE "A" FRESH FROZEN TOMS — 18 TO 22 POUND AVERAGE

**Young Tom Turkeys**  
29¢ lb.

U.S.D.A. "CHOICE" STEER BEEF

**FAMILY STEAK** 89¢ lb.

U.S.D.A. "CHOICE" STEER BEEF

**SHORT RIBS** 29¢ lb.

U.S.D.A. "CHOICE" STEER BEEF

**CROSS RIB ROAST** 89¢ lb.

BONELESS, TENDER, AND LEAN BEEF

**BEEF STEW** 79¢ lb.



GORTON'S FROZEN FISHCAKES

4 8-oz. pkgs. **\$1**

GORTON'S FROZEN FISH BALLS

4 7-oz. pkgs. **\$1**

GORTON'S FROZEN BREADED SHRIMP

1-lb. pkg. **89¢**

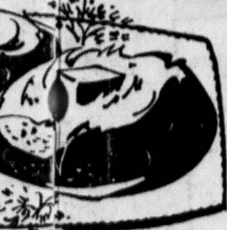
GOLDEN CREME — GRADE "AA" 1st QUALITY BUTTER  
pound pkg. **67¢**

GOLDEN CREME PREMIUM ICE CREAM  
½ gal. round **69¢**

**Lang's Soy Egg Noodles**  
Contains special flour, soya and fresh eggs  
Regular price 43¢ — 11-oz. cello package **39¢**

**Tiger Milk Cookies**  
Contains Tiger's Milk and wheat germ  
Regular price 39¢ — 8-oz. cello package **35¢**

BEST FOR BAKING  
**POTATOES**  
pound cello bag **39¢**



PAPIS

FRESH ITALIAN  
**PRUNE PLUMS**  
10¢ lb.



ORANGE TIFFIN CINNAMONY BAKERY  
**COFFEE CAKE**  
reg 59¢ **49¢** each

TOLL HOUSE COOKIES 35¢ doz.

MADE WITH HONEY & MILK FOR DELIGHTFUL OLD FASHIONED FLAVOR. POUND LOAF

WHOLE WHEAT BREAD 25¢



RUBEN'S GOURMET GALLERY  
**ALL BEEF SALAMI**  
reg. 89¢ **59¢** lb.

OUR OWN  
**SOUR CREAM HERRING**  
reg. 98¢ **89¢** lb.

DEL AMO SHOPPING CENTER CORNER OF HAWTHORNE & SEPULVEDA

**MAGIC CHEF**



## State Committee Studies Finances For State Fairs

By VINCENT THOMAS  
Assemblyman, 68th District

How best to use state funds for the construction needs of California's 70-odd district and county fairs is still an important legislative problem. The 1959 Legislature placed a ceiling of \$2¼ million annually on the total capital outlay funds which can be allocated to all local fairs. This ceiling has diverted from \$2 to \$3 million per year into the state's general fund for the last three years.

The fairs were enrolled in a five-year building program, which was carefully worked out with each fair, but the fairs, understandably enough, were not very happy at having their funds cut so heavily. They took their complaints to the Joint Legislative Committee on Fairs Allocation and Classification for consideration. In its 1961 report, this group recommended a temporary trial increase in the ceiling, the exact amount to be determined after further study.

THE COMMITTEE recently met to review possible recommendations for submission to the 1963 session. Concerning this capital outlay matter, two alternative suggestions were presented to the group.

The first would involve use of "excess" operating funds granted to local fairs from the state treasury. Under existing law, fairs are granted an amount each year for needed current operating expenses, but not to exceed \$65,000 each year. The proposal is that the difference between the total actually given to all fairs, and the total figure at the maximum for each fair, be transferred to the capital outlay fund each year and allocated in addition to the \$2¼ million. This would mean about an additional half-million dollars per year.

THE SECOND proposal would call for an outright increase in the ceiling of the capital outlay fund of \$4 million, for an experimental period of four years. This amount would permit expenditures for capital outlay each year of about 6 per cent of the total value of all fair plants. Replacement of old facilities would be included in this.

During committee consideration of these proposals, a spokesman for the department of finance read into the record a letter from the Governor to the chairman of the public works board, relating to the capital outlay funds for fairs. In this letter the Governor said that the Alameda County Fair badly needs a new grand-

stand because the present one is unsafe and unsuitable.

A NEW ONE would cost about \$1½ million, but even to allocate this amount to this fair over a three-year period would cripple the building programs of all the other fairs. Therefore, he will submit legislation to the 1963 session to transfer the operating excess to the capital outlay fund, as suggested in the first proposal made to the committee.

The spokesman was asked by members of the committee whether the present \$2¼ million ceiling is adequate for needs of the fairs. He replied that experience so far had shown that it is probably sufficient for the "normal needs" of the fairs, but will not cover emergencies, such as that in Alameda. He also indicated that with the transfer, the grandstand could be financed over a three-year period without harm to other fairs.

## Four Bands Will Attend College Game

Four Torrance youth bands will be among 27 other musical organizations which will entertain during half-time of the USC-Duke football game at the Coliseum Saturday.

Taking part will be the Torrance Area Youth Band, Torrance Junior Youth Band, both led by James Van Dyck; the Los Caballeros Youth Band, directed by Bob Cotton, and the Original Dixieland Society of Roaring Teen Youth Band, directed by H. B. Murray.

The spectacular salute to America's march king, John Philip Sousa, will feature five of Sousa's best-loved marches played by the massed bands, numbering 1,850 musicians.

Climax will be the launching of 5,000 red, white and blue helium-filled balloons from the top of the peristyle arches during the trio of "Stars and Stripes Forever."

## Realtors Form Committee to Elect Gibson

Formation of a Realtors for Gibson for Assessor Committee has been announced by Fred W. Marlow, Los Angeles realtor and director of the National Assn. of Real Estate Boards.

Committee members from the area include Nick Dralle of Torrance and Adams Bolton of Gardena.

## Garden Checklist

1. Shop for pyracantha and cotoneaster now and enjoy their colorful red berries through winter.
2. Use pot-grown chrysanthemums from nurseries if you failed to plant the young rooted cuttings last spring. You can buy them in full color.
3. Spray your roses. Mildew is often a major offender in September.
4. Plant fressias, sparaxis, Dutch iris. These four like to go into the ground earlier than other spring-blooming bulbs.
5. Tall bearded iris are still available for planting. You can still divide crowded clumps of these also.

LIFE'S LIKE THAT

By FRED NEH



"Home-wrecker!"