

Sight & Sound

By Ernest Kreiling

Through television many performers who are unknown to the public in September become household words by Christmas.

One of this year's new faces you've seen many times in supporting and featured roles, and by Christmas you'll probably remember his name, Richard Rust.

Rust was one of 60 hopeful young actors who reported to MGM in May to apply for the role of Hank Tabor, a young

lawyer associate of Edmond O'Brien's in NBC's new Sam Benedict series. Only a dozen applicants were selected for screen tests.

"We had just a few minutes with the director to prepare for the brief scene before going before the camera," Rust told me. "I never saw the film, but when I finished the test I knew I'd get the role. It felt right."

SAM BENEDICT, which will lead off NBC's Saturday night

schedule, is a drama about law which will focus on the character and personality of a top trial lawyer as revealed through his cases. Edmond O'Brien plays the title role which is modeled on the famous San Francisco trial attorney, Jake Ehrlich.

Dick Rust, as O'Brien's young associate, is thereby catapulted from the relative obscurity of supporting parts to a regular featured role in a major dramatic series. But the chance for sudden and dizzying stardom is not what primarily interests Rust, although that too may come.

"A filmed TV series is today's repertory theater, the best chance an actor has to de-

velop and grow as a performer," Rust observed. "I thought I'd done a lot of skilled acting, but nothing equals spending six or seven days a week before the camera to find and bring out the best in you—and to reveal how much there's still to be learned."

"ANOTHER opportunity a regular and important role affords is to learn the art of acting by working with top professionals like Edmond O'Brien and the guest stars we'll have. It's difficult working with a new script each week and with different directors, but it's a rich experience."

Rust, a lean, intense young man, is less impressed with

being seen by millions of viewers each week than with the challenges and opportunities the series has presented.

"An actor doesn't 'play a role,' as I see it. He communicates an emotionally vibrant part of a fictional character to the audience, and he does it as only one 'energy' among many. The cameramen, technicians, cast and staff around a sound stage are all a part of a complex of creative energies, so an actor has to sublimate his own ego and work with and through the others to develop a scene effectively."

WORK BEFORE a camera, however, isn't all of an actor's training, as Dick Rust sees it.

"I think an actor should read, visit museums, art galleries, and learn to really know all kinds of people before he can empathize with the character he's playing, with the rest of the cast, and with the audience. It's a very unique process of communication."

Dick Rust's immediate fame and fortune depends somewhat on how Sam Benedict is accepted by the unpredictable and often fickle viewing public. Even if the series isn't the great success it might become, Rust will have undergone another strenuous phase of the training and hard work that goes into becoming the first rate actor he has every intention of becoming.

Voters Warned of Deadline For Registration to Vote

Supervisor Burton W. Chace has re-emphasized the importance of obtaining full voter registration for the Nov. 6 general election.

"The county has assigned a staff of more than 4,200 deputy registrars in an effort to assist persons in making proper registration," Chace said.

In cooperation with the supervisors "Register to Vote Month," deputy registrars are manning booths in banks, city

halls, post offices, other government buildings, markets and on street corners in the 74 cities of the county.

Chace expressed hope that results of this year's vote campaign will top the previous registration high of November 1960, when 49.31 per cent of total county population registered to vote.

Sept. 13 is the final day on which a person may register to vote.

Graduate Classes Set By USC

Three graduate night courses in education will be offered in Torrance this fall by the University of Southern California.

"Curriculum Laboratory in Elementary Education" will be taught by Dr. Donald Wilson, associate professor of education at USC, on Thursday from 4 to 7 p.m., beginning Sept. 27. The class will meet in the conference room of the Torrance Education Materials Building, 2335 Plaza Del Amo.

"Laboratory Seminar in Elementary Art" will meet in the cafeteria of the Fern Avenue School, 1314 Fern Ave. This two-unit class will meet on Mondays from 4 to 6 p.m., beginning Oct. 1.

"Problems in Curriculum Construction in Art" will also meet in the Fern Avenue School cafeteria. It will meet from 4 to 6 p.m. on Tuesdays, beginning Oct. 2.

BOTH ART courses will be taught by Dr. Vincent Lander, USC associate professor of education and fine arts.

"Abnormal Psychology" will be taught on Thursdays from 7 to 10 p.m., beginning Sept. 27. The three-unit course will be taught by Dr. Frank Risch, clinical psychologist with the Veterans Administration, in the auditorium of the Harbor General Hospital, 1124 W. Carson St.

REGISTRATION and payment of tuition will take place at the first class meeting. Textbooks, if needed, will be sold at that time.

World War II, Korean, and California veterans may enroll upon presentation of proper credentials. California state veterans must present or have on file an authorization certificate issued for the fall semester, 1962.

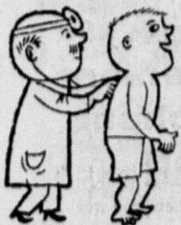
Further information may be obtained by writing to the University of Southern California, University Park, Los Angeles 7.

Army specialist four Wilmer I. Roquemore, whose father, Alton D. Roquemore, lives at 1550 W. 224th St., participated with more than 70,000 Army and Air Force personnel in Swift Strike II maneuvers in North and South Carolina.

The maneuvers ended Aug. 17.

Roquemore is assigned to the 661st Ordnance Co. He is married and makes his home in El Paso, Tex.

YOUR BEST CANCER INSURANCE



See your doctor every year for a health checkup.

See your doctor immediately if any one of Cancer's Seven Danger Signals lasts more than two weeks:

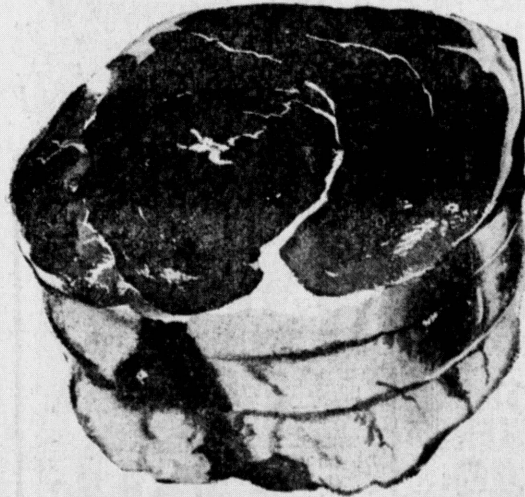
- 1 Unusual bleeding or discharge
- 2 A lump or thickening in the breast or elsewhere
- 3 A sore that does not heal
- 4 Change in bowel or bladder habits
- 5 Hoarseness or cough
- 6 Indigestion or difficulty in swallowing
- 7 Change in a wart or mole

AMERICAN CANCER SOCIETY

SAVE 47¢ on Giant 22 oz. Cans of ENERGY Liquid DETERGENT 3 FOR \$1

1 POUND CAN — Regular or Drip M.J.B. Coffee 59¢

5c OFF LABEL CRISCO SHORTENING 3-lb. Can 69¢



Personally Selected STEER BEEF

Extra Lean, Oven Ready RUMP ROAST Expertly trimmed for minimum waste. Tops for flavor and wholesome nutrition

PETER PAN Salmon 1-lb. Can SAVE 20c 59¢

VANO FLUFFER FABRIC SOFTENER 1 1/2 Qt. Size — Save 14c 59¢

BONELESS CLOD ROAST 79¢ lb

ALL MEAT WIENERS AND BOLOGNA 39¢ lb

END CUT PORK CHOPS OR ROAST 49¢ lb

BLUE SEAL OLEO 1-LB. PKG. 15¢

SPRINGFIELD — 12-oz. B.B.Q. SAUCE SAVE 4c 25¢

OUR EXTRA LEAN GROUND MEATS GROUND BEEF 39¢ lb GROUND CHUCK 49¢ lb GROUND ROUND 59¢ lb

Try Our Steaks CUBE-CLUB SIRLOIN TIP 89¢ lb

CENTER CUT BONE-IN ROUND STEAK 69¢ lb

MAXWELL HOUSE INSTANT COFFEE SAVE 46¢ — 10-oz. 99¢

FARM BELLE — 46-oz. BOYSENBERRY or FRUIT PUNCH 4 for \$1

EXTRA LEAN Beef Patties 45¢ lb. MARINATED OR PLAIN Chuck Steaks 45¢ lb

BEECH-NUT STRAINED BABY FOOD 12 for \$1

Large 2 1/2 Can SPRINGFIELD TOMATOES 19¢

NO. ONE CENTRAL AMERICAN Bananas 10¢ lb

COUPON SATURDAY ONLY! LETTUCE 5¢ ea WITH THIS COUPON ONLY! SAT., SEPT. 8th

ROSARITA — 303 Cans Refried Beans 6 for \$1

BILLOW MAIN — 3 1/2-oz. SARDINES SAVE 10c 2 for 25¢

U.S. NO. 1 RUSSET POTATOES 10 lb. cello bag 39¢ SWEET, VINE RIPE Watermelon Average 12 Lbs. — Guaranteed 39¢ ea. EXTRA FANCY BROWN ONIONS 5¢ lb

Maxwell House COFFEE 2 lbs. \$1.25 1 lb. 63¢ YUBAN COFFEE 69¢ lb

DELICATESSEN DEPT. MORRELL'S ALL MEAT FRANKS 39¢ Pkg. Homemade Plio - Fresh SAURKRAUT 15¢ 15-oz. — SAVE 4c Kraft Old English SANDWICH CHEESE 39¢ 8 OZ. — SAVE 10c

NORLEY'S

1330 El Prado, Downtown Torrance

OPEN SUNDAY 10 A.M. TO 2 P.M. MON., THURS., FRI., 9 A.M. TO 9 P.M. TUES., WED., SAT., 9 A.M. TO 7 P.M.

WE CASH PAYROLL CHECKS PAY YOUR UTILITY BILLS HERE SPECIALS 7 DAYS PER WEEK

WE GIVE BLUE CHIP STAMPS

