



"It's labor and management that the President asked to use restraint . . . NOT the consumer!"

72-Year-Old Still Busy With Ministry

Mrs. Ethel Mayhew of 2422 Arlington Ave. is the oldest member of the West Torrance Congregation of Jehovah's Witnesses. Although long past her three score and ten, she plans to be among the 7,500 delegates to the "Courageous Ministers District Assembly" at the Orange County Fairgrounds near Costa Mesa, Aug. 10-12.

Mrs. Mayhew is 72 years of age and is still active in the ministerial work of Jehovah's Witnesses. Many residents of this area have been aided to a better understanding of the Bible because of her patient ministry.

"I have thoroughly enjoyed the opportunity of helping others to learn of God's Will and

of studying His Word with many in their homes. In my opinion there is no other work on earth as rewarding." Mrs. Mayhew said, in discussing her more than 42 years in the ministry.

"RETIREMENT has never been the objective of those associated with the preaching

Moose Lodge Plans Show

A floor show will be a highlight of a Torrance Moose Lodge dance Saturday from 9 p.m. to 1 a.m. at the Moose hall, 1744 E. Carson St.

The floor show will consist of pantomime, instrumental and vocal numbers.

fellowship of Jehovah's Witnesses, nor is it mine, and I shall continue as long as I am privileged to do so, in fact I am making plans to attend this three-day program of Bible training so as to improve my own teaching ability," she maintained.

"To stimulate and encourage us to Godly living and Chris-

tian unity, 48 assemblies have been arranged by The Watchtower Bible and Tract Society of New York for the more than a quarter million Witnesses in the United States," she said.

A NEW HAMMOND! STUDIO



FOR: TORRANCE, LOMITA, PENINSULA AND BEACH AREA FAMILIES.

THE HAMMOND ORGAN STUDIOS OF THE SOUTH BAY

A Ken Chilton Co. Inc. Enterprise

2768 SEPULVEDA — PHONE DA. 6-1131 TORRANCE

RENT A HAMMOND ORGAN FOR PENNIES A DAY, INCLUDES LESSONS AND CARTAGE. RENTAL APPLIES TO PURCHASE IF YOU DECIDE TO BUY . . . NEW HAMMONDS LOW AS \$726.00

Pastor Goffar Attending Church Meeting in North

Glenn L. Goffar, pastor of Torrance Seventh-day Adventist Church, 1610 Acacia Ave., left Torrance Sunday to attend a worldwide ministerial convention in San Francisco which began Tuesday.

The convention precedes the 49th quadrennial world conference of Seventh-day Adventists which opens in San Francisco today. The ministerial session will feature addresses and panels by Adventist theologians from around the world and will shape Adventist ministerial efforts for the next four-year period.

At the ministerial convention Pastor Goffar will join

some 150 other Adventist ministers from Los Angeles, Santa Barbara and Ventura counties as well as colorfully dressed fellow Adventist ministers from such far-away countries as New Guinea, Nigeria and India.

"This rare opportunity to meet with ministers from around the world will bring a sense of unity to our ministry in Torrance," Pastor Goffar said in commenting on his attendance at the ministerial session.

Accompanying Pastor Goffar to the San Francisco meetings will be his wife, Ione, and son, Dennis.

Camino Choir Concert Sings Summer Songs

"Songs on a Summer Night" will be the theme of an Aug. 3 concert in the Campus Theater of El Camino College by the college Community Choir.

With Crist Mikkelsen as director, the choral group will be accompanied by Kay Grantham in the 8:30 p.m. program. The public is invited to attend without charge.

Music to be presented will range from the works of Bach, Handel, and Brahms to that of the contemporary composers.

Two soloists, Robert Eades, bass, and Madison Taylor, tenor, will be heard in "Rejoice, Oh Judah!" and "If With All Your Hearts."

Marise Counsell, recently returned from New York where she sang folk songs at Manzini and the Playhouse Cafe while making off-Broadway ap-

pearances, will also participate on the summer program. Miss Counsell is an alumna of El Camino College; she appeared in the college production of "Allegro" with Paul Coni in 1954.

A SERIES of four spirituals and folk songs arranged by Jester Hairston, who has been musical director for a number of Hollywood movies and for the Los Angeles Civic Light Opera Company, will also be featured.

Completing the program will be selections of Frank Loesser, taken from "Guys and Dolls" and "Most Happy Fella." Soloist Vic Barrera, a male quartet, three duets, and the full choir will be presented in the performance of Loesser's show tunes.

Naval Air Squadrons Due Aug. 1

Two Torrance residents will be among personnel of two Naval Air Reserve Squadrons being returned to civilian life Aug. 1.

The squadrons were called to active duty last October. This afternoon, Lt. Gov. Glenn Anderson will address the reservists in special ceremonies honoring the achievements of the squadrons and citing the personal sacrifices of the men and their families.

Torrance residents in the squadrons are Lt. Commander Stanley W. McFarland of 5501 Highgrove St., an instrument training officer in the squadron and a second officer for United Air Lines in civilian life.

The other man is aviation electrician's mate Second Class Charles M. Parker of 21422 Evalyn Ave., who is employed with Hughes Aircraft in Culver City.

Today's ceremonies will be at the Los Alamitos Naval Air Station. About 500 officers and men in the two anti-submarine squadrons will participate.

Agreement On Bridge Announced

Approval by the Board of Supervisors of a two-way agreement providing for construction of a new bridge at Figueroa Street and Dominguez Channel was announced yesterday by Supervisor Burton W. Chace.

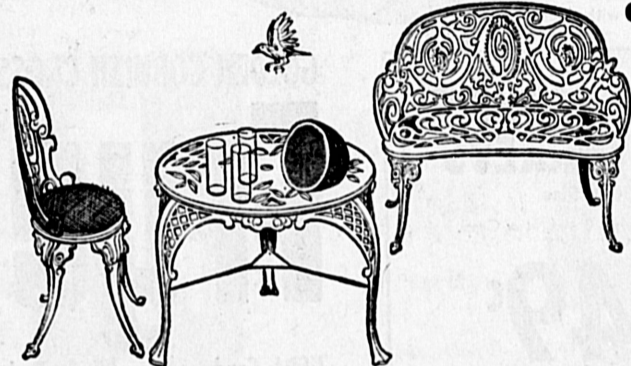
The pact between the County Flood Control District and the County Road Department calls for the latter agency to build the new bridge to replace the present structure.

Under terms of the agreement, the Road Department will pay for additional roadway facilities included in the construction contract and to operate and maintain the completed bridge, approaches and street drainage facilities.

Chace said it further provides for the Flood Control District to deposit \$475,900 with the Road Department which is the estimated cost of the replacement bridge, approaches, and related work of channel excavation.

Dominguez Channel is presently being improved by the District from its headwater near Inglewood to an outlet at San Pedro Bay.

the akron

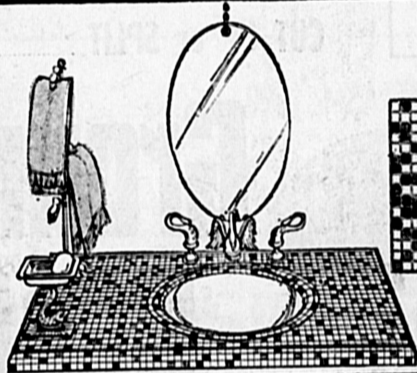


French-Quarter Garden Furniture

- for belles, beaux, you all
- hospitality in elegant, ornate white . . . rugged, enduring cast iron . . . formed into southern comfort . . . lacy, lovely, inviting
- for patio, poolside, lawn . . . inspired for foyer, interior decor, too
- big circular table, 29 inches in diameter . . . 38-inch love seat . . . bayou chair . . . all in white (or spray paint with your favorite color)

chair, 7.99
love seat, 16.99
table, 21.99

sorry, no mail orders



Harlequin Mosaic Tiles from Italy

- all the bright, brilliant tiles you've ever wanted . . . here in a dazzling random selection!
- each square foot a magical mixture . . . of blues and ivories and sunny reds, oranges and yellows . . . plus coppers and greens and butterscotch and greys and others!
- 225 varied color-squares in each square foot
- a harlequin holiday for you mosaic-lovers . . . a do-it-yourself delight with a rainbow at your fingertips!
- these much-demanded colors are triple our tag elsewhere!

29c sq. ft.

sorry, no mail orders



Iron Table Base

- a marvelous massive pedestal . . . table this notion!
- sturdy cast iron in an elegant sculptured florentine design in bronze
- dining table height, 28 inches . . . just top it with marble, wood, glass!
- let it bring a new look to an old piece . . . beautiful!

13.99

sorry, no mail orders

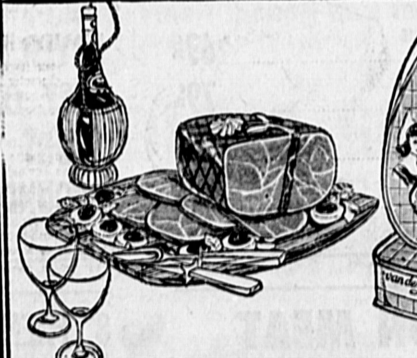


King-Size TV Table

- for unexpected snacks, for dining al fresco, at coffee time . . . convenience at your service!
- all metal, sturdy but lightweight . . . a beautifully decorated removable tray
- 2 feet high, on legs of brass . . . and the tray is a "king-sized" 22"x17"
- smart, space-saving . . . it folds out of the way until next time
- slight irregularities . . . but no one will know!

99c

sorry, no mail orders

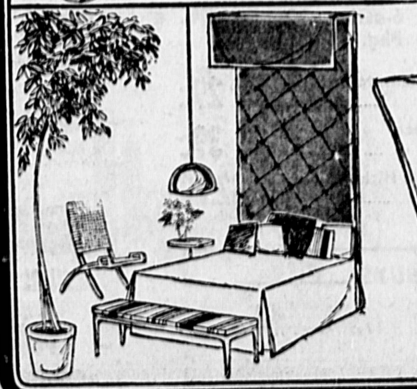


1 lb. Canned Holland Ham

- from the farms of the dutch lowlands . . . a hearty, delicious pound of ham!
- ham as you like it . . . tender, tasteful, boneless . . . simmered in its natural juices
- more than enough . . . to build dinner around, for robust sandwiches, for unexpected guests, for picnic fare, for just being good to your appetite
- high-protein addition to your zestful menu . . . and so inexpensively yours!

1 lb. can 89c

sorry, no mail orders



Foam Upholstery Sheets

- planning to do-it-yourself? stop here first!
- pick up a huge sheet of polyurethane foam . . . we have them as long as 72 inches, as wide as 54 inches!
- you can cut it . . . shape it . . . glue it . . . pack it . . . it's endlessly useful!
- add one to a mattress . . . upholster a seat or sofa . . . toss one in the station wagon for snoring . . . let baby romp on it!
- varying thicknesses, up to 3 inches . . . firm, floating, shape-keeping!

99c

12" round or square pillows 39c

sorry, no mail orders



Goatskin Bota from Spain

- carry wine in this goatskin canteen . . . and go native when you drink it too!
- an authentic bota from Spain . . . it will hold a leakproof liter of your favorite beverage . . . pass it around to slake everyone's thirst
- at the ball game, for example . . . or the bullfight, the beach, at the patio feast, for informal guzzling anytime
- carefully made by hand . . . with a convenient screwcap, a bright satin carrycord, a traditional gourd-shaped . . . latex-lined to preserve freshness and flavor!
- cheers! (or whatever a madrieno would say)
- usually carries a \$3 tag

1.39

sorry, no mail orders



Italian Alabaster Table Lighters

- luminaries of precious alabaster . . . direct from Italy!
- the cool, heavy feel of marble . . . an elegant light touch on a coffee or cocktail table
- 5 modern shapes . . . in translucent veined amber, pink, yellow, white, smoky or blue
- what do you light your tables with now?

1.39

sorry, no mail orders



Swedish Crisp Bread

- royal rye . . . a royal treat!
- enriched rye crisp bread wafers . . . discovered in Scandinavia!
- made from 100% whole rye flour . . . with a little yeast and salt added
- result . . . 8 ounces of a low-calorie appetite-appeaser . . . any time of day!

19c 8 oz.

sorry, no mail orders



Complete Luau Kits

- a huge bolt of new fish netting . . . about 54 square feet!
- plus two large round corks, two leis, a large sea shell, and a real, honest-to-goodness starfish!
- decorate it at a window, drape an entrance, bring seagull flavor indoors!

99c per kit

sorry, no mail orders

SPECIAL SALE ON ORGAN AND PIANO RENTALS RETURNS, DEMOS AND TRADE-INS

Mahogany Lowrey Holiday, 4-months-old	\$795
Provincial Wurlitzer with Leslie Speaker	\$995
Mahogany Model M Hammond, perfect	\$895
Conn Church Model, 2 manual	\$895
Thomas Fruitwood Photo-organ, New	\$495
Thomas Chord Organ, New	\$495
Thomas 2 Manual, perfect	\$495
Thomas Single Manual, perfect	\$495
Thomas Chord Organ, New	\$350
Thomas 2 Manual with sustain, New	\$395
Thomas 2 Manual with sustain, New	\$395
New Artisan custom-made 3 manual, New \$11,000. Now \$8500 with New Starck speakers from \$395.00. Also Henry F. Miller & Kimball pianos.	

BETTIE THOMAS STUDIOS

Open 9:30 - 8:00 Mon. - Sat. Free delivery and terms up to 48-months. FREE LESSONS WITH ALL ORGANS.

OPEN DAILY 9 A.M. to 9:30 P.M. SUNDAYS 10 to 7

West LOS ANGELES

Sepulveda & National EX 1-5225

SOUTH BAY Torrance

Hawthorne Blvd. & 180th St. 370-3535



ACCEPTED AT SOUTH BAY STORE