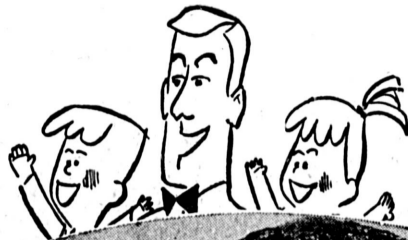


# OM

Food Giant  
-let's have more meat!

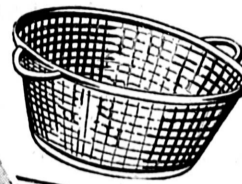


air" around delicious, satisfying meat. It can't be beat for sheer eating enjoyment  
e your piece de resistance from the tremendous selection of quality, trimmed for  
Giant. Every member of the family will delight in a deliciously tender steak.  
fornia grown turkey, finest in the nation . . . THIS WEEK'S SPECIALS!

## LAUNDRY BASKET

Large Round Laundry Basket, two handles,  
assorted pastel colors, all vinyl plastic.

**58<sup>c</sup>**  
ea

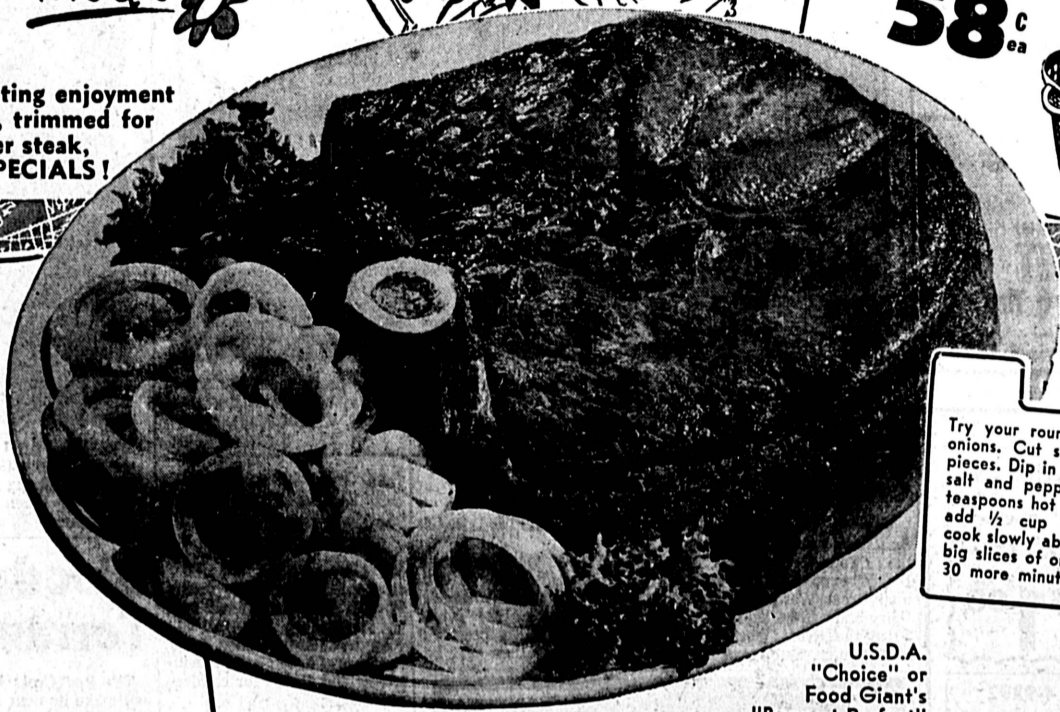


U.S.D.A. Government Graded "Choice"  
or Food Giant's "Banquet Perfect"

## SWISS STEAK

**69<sup>c</sup>**  
lb

Delicious, tender and flavor-  
ful swiss steak is one of the  
most versatile meats you can  
buy. Whether you serve it  
country style, in a casserole  
or smothered in onions it is  
sure to please your family.



Try your round steak smothered in  
onions. Cut steak into serving size  
pieces. Dip in flour and sprinkle with  
salt and pepper. Brown in about 3  
teaspoons hot oil in skillet. Carefully  
add 1/2 cup of water. Cover and  
cook slowly about 30 minutes. Add 5  
big slices of onions. Cover and cook  
30 more minutes or until tender.

U.S.D.A.  
"Choice" or  
Food Giant's  
"Banquet Perfect"

## ROUND STEAK

Bone  
In

**79<sup>c</sup>**  
lb

BONELESS ROUND STEAK 89<sup>c</sup>

U.S.D.A. "Choice" or Food Giant's  
"Banquet Perfect"

## RUMP ROAST

Bone  
In

**69<sup>c</sup>**  
lb

Boneless Round or Rump Roast . . . 89<sup>c</sup> lb.

U.S.D.A. "Choice" or Food Giant's "Banquet Perfect"

**CHUCK STEAK**  
**49<sup>c</sup>**  
lb

**CUBE STEAK**  
**89<sup>c</sup>**  
lb

FINEST QUALITY  
**GROUND ROUND**  
**69<sup>c</sup>**  
lb

FRESH GROUND HOURLY  
**GROUND CHUCK**  
**59<sup>c</sup>**  
lb

WEL  
AD OIL

**29<sup>c</sup>**

HASH BROWN  
POTATOES

**25<sup>c</sup>**  
Frozen Russette  
12-oz. Pkg.

MA PERKINS  
APPLESAUCE

**10<sup>c</sup>**  
Tall  
303  
Can

Assorted Delicious Flavors

**JELLO 3** Reg. Pkgs. **25<sup>c</sup>**

RF  
TE  
\$1

## GREEN GIANT SUPER PEAS

tall  
303  
can **17<sup>c</sup>**

## GLOBE A-1 SPAGHETTI

one pound  
package **19<sup>c</sup>**

## ALL GRINDS M.J.B. COFFEE

pound  
can **59<sup>c</sup>** 2-lb. Can \$1.17



U.S.D.A. Grade "A" Turkeys from California ranches, 18-22 lb. avg.  
**YOUNG TOM TURKEYS** **29<sup>c</sup>**  
lb

U.S.D.A. Grade Turkeys, California Grown, 10-14 lb. avg.  
**Grade "A" HEN TURKEYS** **35<sup>c</sup>**  
lb

U.S.D.A. Grade "A" Turkeys From the finest Calif. ranches, 4-8 lb. avg.  
**JUNIOR TURKEYS** **43<sup>c</sup>**  
lb

This fine Minnesota sliced bacon is of extra fine quality, pound pkg.  
**HORMEL SLICED BACON** **49<sup>c</sup>**  
lb

Camp's Buttered  
**BEEF STEAKS**  
1-lb.  
Pkg. **59<sup>c</sup>**

Certifresh Fried  
**SCALLOPS**  
7-oz.  
Pkg. **39<sup>c</sup>**

Feiler's Sandwich  
**PATTIES**  
1 3/4-oz.  
Patties **5<sup>c</sup>**

Smoked  
**PORK CHOPS**  
**89<sup>c</sup>**  
lb

ge cheese no. 2 1/2 can  
**29<sup>c</sup>**  
ays, jumbo-46-oz can.  
**4<sup>99</sup>**  
ge no. 2 1/2 can no.  
**ODLES 29<sup>c</sup>**  
can of fine quality  
**25<sup>c</sup>**  
r with our giant box of  
**ERGENT 59<sup>c</sup>**

you to visit our Complete Health and Diet Department  
**COLA SAFFLOWER OIL** full quart **69<sup>c</sup>**  
**COLA SAFFLOWER OLEO** one pound **49<sup>c</sup>**  
capsules with vitamin B-6, big bottle of 100 capsules  
**ITA SAFFLOWER CAPSULES \$1.98**

LARGE TUBE  
**CREST TOOTHPASTE**

**35<sup>c</sup>**

Includes 5c Off Label  
Regularly 53c

SWEET FLORIDA

## VALENCIA ORANGES

**12** pounds **\$1**

## TOP QUALITY BARE ROOT ROSES 3 for \$1

Two year old bushes packaged in moss ready to burst into bud and bloom. All popular varieties such as Talisman, Crispin Glory, Peace, and many others. Fill those empty spots in your garden at this tremendous savings.



RIPE FUERTE

## AVOCADOS

**10<sup>c</sup>**  
ea

&  
S  
c

INSTANT COFFEE  
YUBAN 99<sup>c</sup>

CUCUMBER PICKLES  
56W Fresh Slices 24-oz. Jar **49<sup>c</sup>**

ET  
D  
43<sup>c</sup>

CHUN KING  
WONG CHOW MEIN MIX  
1-lb. Can **59<sup>c</sup>**

SCHILLING  
SPAGHETTI SAUCE MIX  
2 1 1/2-oz. Pkgs. **49<sup>c</sup>**

OSCAR MAYER  
CORN BEEF HASH  
15 1/2-oz. Can **41<sup>c</sup>**

Van de Kamp's BAKERIES  
**SPECIALS**  
MAY 17-20  
LEMON COCONUT CAKE **1.05**  
ALAMO PECAN PIE **89<sup>c</sup>**  
BLUEBERRY MUFFINS **33<sup>c</sup>**

## 4 Giant Sale Days, Thurs.-Sun., May 17-20

- In TORRANCE 3731 Pacific Coast Hwy. at Hawthorne
- In NO. TORRANCE 4848 W. 190th St. at Anza
- In GARDENA 24990 Crenshaw Blvd. at Compton
- In HAWTHORNE 423 S. Hawthorne Blvd. at 132nd
- In MANHATTAN BEACH 2400 Sepulveda Blvd. at Marine
- In SAN PEDRO 28849 Western Ave.

**FOOD GIANT**