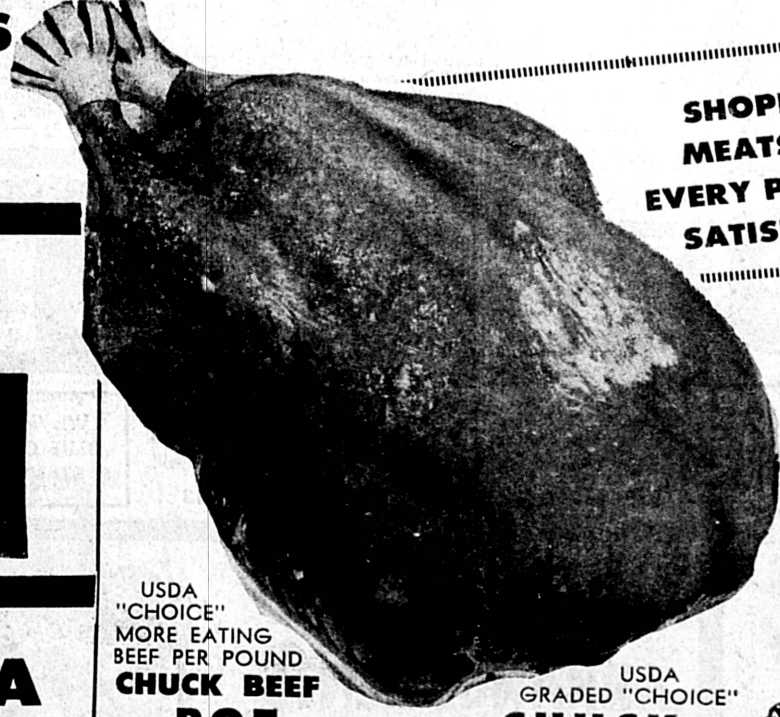


"M" is for the Money we save Mother



EVERY DAY IS MOTHER'S DAY AT SHOPPERS . . .
WHERE HIGHER QUALITY AND LOWER PRICES PREVAIL . . . 7 DAYS A WEEK . . . 52 WEEKS A YEAR.

SHOPPERS FABULOUS MEATS ARE TRULY FABULOUS!
EVERY POUND IS GUARANTEED TO SATISFY OR YOUR MONEY BACK!



LABEL BANQUET • FROZEN

COIL MEAT PIES

• BEEF
• TURKEY
• CHICKEN

8-oz. PIE

6⁵¢ FOR 1

M.D. • 4-PACK • BATHROOM TISSUE **12⁹¢** ROLLS SAVE 11¢

CHICKEN OF THE SEA LIGHT CHUNK TUNA **13⁸⁹¢** 6 1/2-oz. CANS SAVE 10¢

DOLLAR SALE!

4 No. 303 CANS \$1	IRIS • ALL GREEN • CUTS & TIPS ASPARAGUS 4	4 No. 300 CANS \$1
4 No. 303 CANS \$1	IRIS • EXTRA FINE • FRESH-PICKED GREEN PEAS 4	4 No. 303 CANS \$1
5 No. 303 CANS \$1	IRIS • EXTRA HEARTY • FLAVORFUL KIDNEY BEANS 7	4 No. 303 CANS \$1
5 No. 303 CANS \$1	IRIS • PINEAPPLE-GRAPEFRUIT FRUIT DRINK 4	46-oz. CANS \$1

PICTSWEET FROZEN FOODS

• PEAS • PEAS & CARROTS
• CUT CORN • BROCCOLI CUTS
• BUTTER BEANS • CHOPPED & LEAF SPINACH
• FRENCH FRIES

7¹ PKGS.

• BANQUET • FROZEN BEEF ENCHILADAS 12-oz. PKG. **3⁹¢**

• ROSE ROYAL • FROZEN CHEESE PIES 7-INCH. PIE **39[¢]**

• FEILER'S • 4 PACK DINNER PATTIES BEEF OR VEAL WITH BUTTER **39[¢]**

USDA "CHOICE" MORE EATING BEEF PER POUND **CHUCK BEEF POT ROAST 49[¢]**

USDA GRADED "CHOICE" **CHUCK STEAKS 49[¢]**

CUT THICK OR THIN THE WAY YOU WANT IT! Lb.

ARMOUR'S LEAN • MEATY **SPARE RIBS 39[¢]** MEDIUM SIZE • BEST FOR BAR-B-Q

FARMER JOHN FULLY COOKED WHOLE **HAMS 49[¢]** READY TO EAT

14-20 LB. AVG. L B

CENTER HAM SLICES LB. **98[¢]**

TENDER • BROAD BREASTED **JR. BELTSVILLE TURKEYS** MORE WHITE MEAT • 4-8 LB. AVG.

39[¢]

USDA GRADED "CHOICE" **RIB • CUBE & SIRLOIN TIP STEAKS 98[¢]**

USDA GRADED "CHOICE" BONELESS • ROLLED **ROUND STEAK ROAST 89[¢]**

USDA "CHOICE" STEAK OR ROAST **BONELESS CHUCK 79[¢]**

MADE FRESH EVERY HOUR • LEAN **GROUND BEEF 3¹⁴⁹¢**

TURKEY WINGS 39[¢]

LEAN • EASTERN **SLICED BACON 49[¢]**

SHOPPERS OWN HOME MADE **PORK ROLL SAUSAGE 4⁹⁹¢** 1 LB. ROLLS

1 LB. ROLL **29[¢]**

KOSHER STYLE **CORNER BEEF 79[¢]**

USDA "CHOICE" **COOK'S PASTRAMI 89[¢]** READY TO EAT

FRY • ROAST • BAKE • BAR-B-Q • FRESH GRADE "A"

CHICKENS 39[¢]

MORE LEGS PER POUND • FRESH GRADE "A"

4 LEGGED FRYERS 49[¢]

NO Necks, NO Backs, NO Giblets
ALL BREASTS, LEGS, THIGHS & WINGS
BEST OF THE FRYERS . . . 49[¢]

FROM OUR DELICATESSEN

A KTTV Feature Value! **OSCAR MAYER • ALL MEAT WIENERS 1 LB. PKG. 49[¢]**

A KTTV Feature Value! **AMERICAN or PIMIENTO BORDEN'S CHEESE 12-oz. PKG. 49[¢]**

BETTY CROCKER PIZZA 14-oz. CAN 35[¢]

BOLOGNA 59[¢] SLICED 13-oz. PKG.

COFFEE 59[¢] 1 LB. CAN

POP CORN 3⁹¢ 20-oz. CANS

COFFEE 59[¢] 2-LB. CAN

TONIGHT

Van de Kamp's presents **LES BAXTER'S MUSIC OF THE 60's**

KTTV 11 CHANNEL

Thursday May 10 **8 p.m.**

WINE • LIQUORS

SHOPPERS LIQUORS — SERVED MOST BY THE DISCRIMINATING HOST

NONE BETTER AT ANY PRICE

SHOPPERS VODKA FULL FIFTH **\$2⁹⁸** FULL QUART **\$3⁶⁹**

90 PROOF DISTILLED LONDON DRY **SHOPPERS GIN** FULL FIFTH **\$3⁴⁹**

86 PROOF • 6-YR. OLD **SHOPPERS DELUXE KENTUCKY STRAIGHT BOURBON** FIFTH **\$3⁹⁹** QUART **\$4⁹⁹**

SHOP AT SHOPPERS WHERE YOU ALWAYS SAVE A LITTLE BIT MORE

ORCHID • CELLO WRAP PAPER NAPKINS 2 80-CT. PKGS. 25[¢]	ALUMINUM FOIL REYNOLDS WRAP 25-FT. ROLL 31[¢]	JOHNSTON • FROZEN CREAM PIES 69[¢]	HOLLOWAY HOUSE HEAT 'N SERVE STUFFED PEPPERS 14-oz. 65[¢]	LUCCA • FROZEN RAVIOLA 10-oz. 49[¢]	RIOH'S • CHOCOLATE ECLAIRS 4-CT. PKG. 49[¢]	SWANSON • FROZEN DESSERT PIES APPLE CHERRY PEACH 2-PK. 33[¢]
--	---	--	---	---	---	--

S Shoppers MARKETS

PACIFIC COAST HWY. AT CRENSHAW BLVD., TORRANCE CARSON AND MAIN, TORRANCE

Open 7 Days A Week — 9 A.M. to 10 P.M.