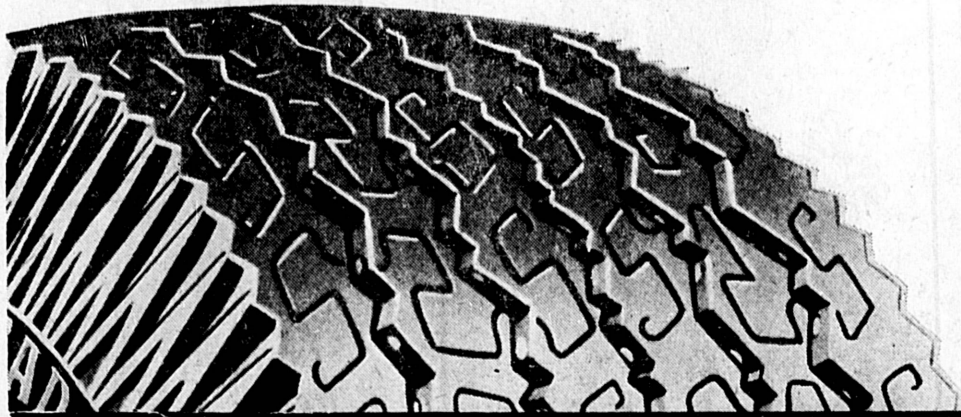


Satisfaction Guaranteed or Your Money Back



You Can't Get a Better Tire Guarantee Than ALLSTATE

TIME SERVICE GUARANTEE
If tire fails during the monthly guarantee period, we will, at our option, either repair it without cost or in exchange for the old tire, give you a new tire or a refund, charging only for the period of ownership.
All adjustments made by retail stores are prorated at the regular retail price plus Federal Excise Tax, LESS TRADE-IN, at the time of return.



Every Allstate Tire is made with revolutionary exclusive blend of long wearing POLY-B.D. Tread Rubber.

ALLSTATE WHITEWALLS AT ALLSTATE BLACKWALL PRICES



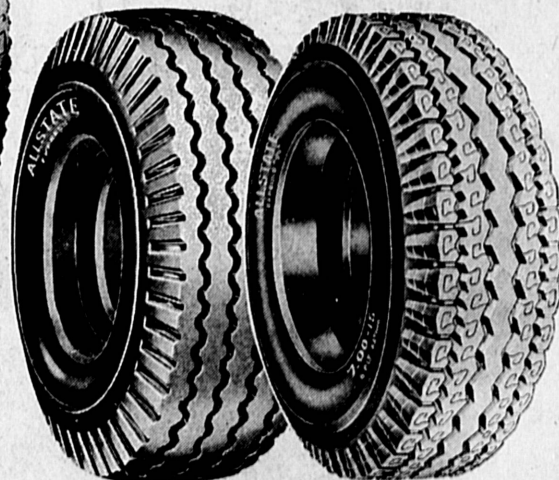
Traction Grip Safe-T-Tread

YOUR CHOICE Tube-type or Tubeless

2 FOR 20.50
Plus Fed. tax.
NO Trade-In Required

7.50x14
8.00x14
8.50x14

- Set of 2 fully retreaded full cap Tires
- Only carefully selected casings are used
- Tough rubber buttons molded into tire hold ribs apart for better traction . . . safer stops



Silent Cushion NYLONS

15.85
plus fed. tax and old tire off your car regardless of condition

- Full 4-ply nylon cord for your added safety
- Hundreds of traction edges in tread to give you 4-way skid protection
- Smog resistant whitewall made with DuPont Hypalon® Synthetic rubber — resists cracking, scuffing — stays white — easy to clean

SIZE	Price Without Trade-in each plus fed. tax	Price With Trade-in each plus fed. tax	SIZE	Price Without Trade-in each plus fed. tax	Price With Trade-in each plus fed. tax
Tube-Type Blackwall			Tube-Type Whitewall		
6.70x15	21.70	15.85	6.70x15	25.70	18.85
7.10x15	24.15	17.95	7.10x15	28.15	20.95
7.60x15	26.90	20.95	7.60x15	30.90	23.95
Tubeless Blackwall			Tubeless Whitewall		
6.70x15 or 7.10x14	24.20	17.85	6.70x15 or 7.10x14	28.20	20.85
7.10x15 or 8.00x14	26.65	19.95	7.10x15 or 8.00x14	30.65	22.95
7.60x15 or 8.50x14	29.30	22.95	7.60x15 or 8.50x14	33.30	25.95
8.00x15 or 9.00x14	32.75	25.95	8.00x15	36.75	28.95

Wheel Balancing Including Weights, Per Wheel 1.45	Brake Adjustment California State Official Brake Station Only \$1
Wheel Alignment Most Cars Only 6.95	Brake Reline Includes Lining and Labor to Install Most Cars 11.95

Sears ALLSTATE Truck Tires

Nylon-Express	Price	Nylon-Express '59'	Price
No Trade-in Needed	\$16 plus fed. tax 6.00x16 ply rating	No Trade-in Needed	\$18 plus fed. tax 6.00x16 ply rating
6.50x16	\$20*	6.50x16	\$23
7.00x15	\$25*	7.00x15	\$29
● Modern 5-ribbed tread		6.70x15	\$21
● For 1/2, 3/4 or 1 ton light delivery trucks		● Extra deep tread depth for extra wear	
* Plus Fed. Tax		● For 1/2, 3/4 or 1-ton trucks	

ALLSTATE All Roads Lead to Sears ALLSTATE Automotive Centers