

The secret of successful free-lane that will enable the way driving, according to the California Highway Patrol, is to select the speed and traffic motorist to move with the traffic flow — neither exceeding nor impeding it.

Bipartisan Support Reported for Isen

"Leaders of the Democratic and Republican political parties, seldom in agreement during an election year, have voiced their approval of the effective leadership of Mayor Albert Isen," Jack Phillips, campaign chairman, said this week in announcing the formation of a "City-Wide Committee to Re-elect Mayor Albert Isen."

Congratulatory messages were received at last week's testimonial dinner for Mayor Isen from Edmund G. Brown, governor of California, and from Richard Nixon, former vice-president of the United States. Commenting on Isen's seven years as the appointed and elected mayor of Torrance, Governor Brown said: "They have been seven years of good government for the City of Torrance and its citizens and seven years of solid achievement for the municipal government led by Mayor Isen."

"It is indeed fitting that this well-deserved tribute should be paid to him," said Mr. Nixon, "in recognition of the forward looking and effective leadership he has given the city of Torrance during a period of unprecedented growth and development."

PHILLIPS announced to the new committee that numerous requests have been received by him to release the text of the two messages, read to a capacity crowd attending Mayor Isen's testimonial banquet, to the general public. "Tacit endorsement" of Mayor Isen by two such prominent Americans and political leaders," said Phillips, "provides the residents of Torrance with another reason for reaffirming their confidence in the leadership provided by Mayor Isen."

Serving as members of the "city-wide committee" are Ralph Braggdon, Jack Brown, John Fedor, Herbert Fisher, Dick Floyd, Frank Frohnhof, Rip Godfrey, Bob Morris, Jim Greer, Fred Hansen, Harold LaMour, John Lenton, Herbert Lieberman, Joseph Platt, Robert Surber, Robert Waegner, Polly Watts, Arnold White, and Frank Burk.

New Sheriff's Unit To Handle Research

The Bureau of Scientific Research, a new unit designed to adapt the advances of modern science to the field of law enforcement, was established this week by Sheriff Peter J. Pitchess.

In making the announcement, Pitchess explained, "This new bureau will engage in three primary functions:

- Researching the field of scientific devices and aids.
- Developing new techniques and scientific aids uniquely applicable to law enforcement.
- Testing and evaluating available and new scientific contributions to the techniques of professional law enforcement.

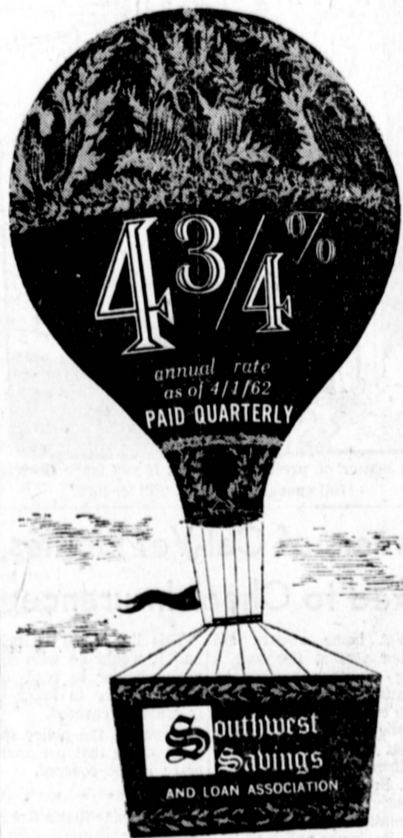
"LAW ENFORCEMENT can never stand still. There is an urgent need for the adaptation of science and technology to policing functions. A preliminary analysis has revealed a number of scientific devices

and techniques, presently utilized in other fields, that will lend themselves to our needs."

Named by Pitchess to command the Bureau was Division Chief Hugh C. McDonald, who is already noted for his creation of the Identikit, a revolutionary new system of criminal identification. McDonald will direct the activities of Criminological Laboratory personnel, and other specially skilled officers, who will be utilized in accordance with the needs of any particular project under investigation.

"The Russians apparently can do everything but put hair back on Khrushchev's head," — William E. Branen, Burlington (Iowa).

"If Nikita Khrushchev took over this country, newspapers would be the first thing he would plow under." — W. M. Harrison, Gallatin (Mo.) North Missourian.



your savings are insured up to **\$10,000**

Funds received or postmarked by the 10th of the month earn from the 1st

INGLEWOOD: 2700 W. Manchester (at 6th Ave.)—PL. 3-2164
TORRANCE: 1603 Cravens (at Marcelina)—FA. 8-6111

Mon. thru Thurs. 9:30 am to 4 pm—Fri. to 6:00 pm

OPEN YOUR SOUTHWEST SAVINGS ACCOUNT TODAY—
IN PERSON—OR BY MAIL

SW 60

INDEPENDENT



Ken Miller has a proven voting record as a member of the Torrance Planning Commission. Time after time he has voted for you and every other citizen in Torrance—not for a favored few or any special interest. It's a fact, not talk. He is objective. Ken Miller is independent.

RESPONSIBLE

Ken Miller is one of those rare Torrance native sons who has been raised and educated here. He has an outstanding record as a businessman and civic leader. His hopes for this City's future are the same as yours. You can vote for a responsible voice on the City Council by voting for Ken Miller.

LEADERSHIP

Ken Miller has proven his leadership in business and civic affairs. He is a past-president of the Torrance-Lomita Board of Realtors and is active as Area Chairman for the Torrance Red Cross campaign. In addition to being a Planning Commissioner, he is a member of the Torrance Chamber of Commerce.

VOTE FOR KEN MILLER

Torrance is growing. With growth comes problems. Our city has them now; more are due in the future. How will we cope with them? By putting the very best men on our City Council. Independent, responsible leadership is going to make the difference. On April 10, vote for this kind of a person. Elect Ken Miller to your

TORRANCE CITY COUNCIL

MAY CO

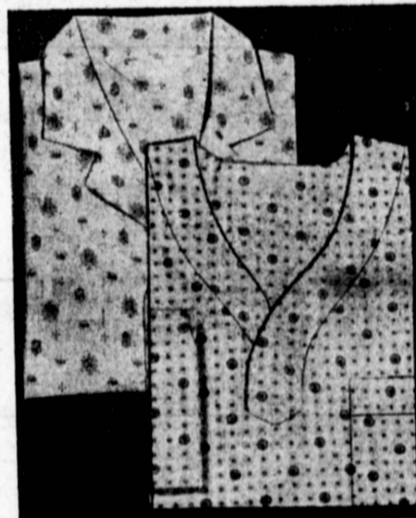
SALE . . .

MEN'S ACCESSORIES

IMPORTED SHORT SLEEVE
WASH & WEAR SHIRTS

3.19 3 for 9.25
4.50 comp. value

The superior mercerized white cotton broadcloth is extra soft to the touch, extra talented at giving extra wear. It's Sanforized, single needle tailored to give you longer lasting, smoother seams. Modified spread collar in sizes 14½-17, snap-tab collar in 14½-16½.



FAMED MAKE PAJAMAS
3.90 2 for 7.50

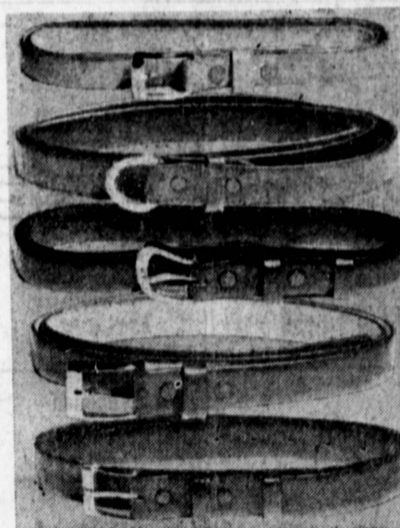
Wash & wear or regular finish cotton broadcloth in lounge, regular coat and middy styles, with heat resistant elastic waistband trousers. All-over and novelty motif designs and smart stripes. Sizes A.D.



FAMED MAKE JEWELRY
1.59* 2 for 3.00*

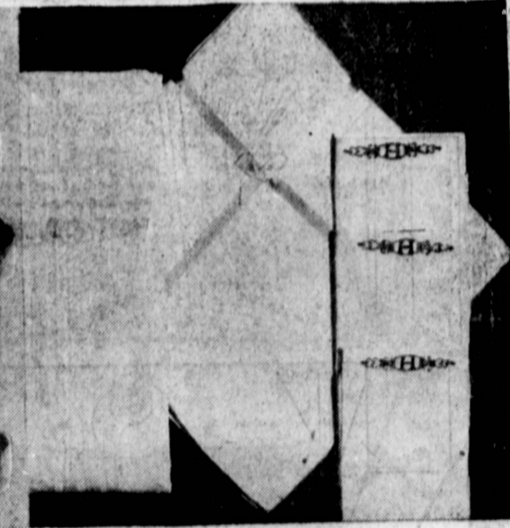
Cuff link and tie bar sets you've seen nationally advertised but not at this unusual low price. Huge selection in abstract cut-outs, engraved silver-tone and gold-tone metals and semi-precious stones.

*plus 10% Fed. tax



MEN'S LEATHER BELTS
1.59 2 for 3.00

From America's best known manufacturer of men's belts, a handsome round-up of cowhides and calfskins, sale priced. ¾ and 1-in. widths with bridle or feather edges. Black, grey, brown. Sizes 30-44.



MEN'S HANDKERCHIEFS

- A. Hand embroidered initials on fine white cotton; hand-rolled hems . . . 12 for **4.10**
- B. Imported from Madeira. White handkerchiefs with colored TV initials . . . 69c. 6 for **4.10**
- C. Cotton Bonus-Pac; 13 white cotton utility handkerchiefs, cellophane bagged . . . 13 for **1.79**

may co. men's furnishings

MAY CO. SOUTH BAY

Hawthorne at Artesia

Phone 370-2511

Shop Monday through Friday, 9:30 to 5:30 p.m.; Saturday, 9:30 a.m. to 5:30 p.m.