



"How many times have I told you that all deliveries are in the rear?"

### Mill, Shawger Head Bruinsma Committee

Torrance business leaders Fred Mill and William (Bill) Shawger have been named co-chairmen of the Bruinsma for Congress Committee for the Torrance area by John Sonneborn, campaign committee chairman.

In a joint statement the two men lauded Bruinsma for his "understanding and knowledge of the problems of the harbor area."

"Ted Bruinsma is concerned about the times in which we live, and we believe he has the background and experience to work aggressively to bring the country back onto a sound footing," the men said.

MILL SAID he believes "the district is fortunate to have such a man as Ted Bruinsma as a congressional candidate because he will spend full time on the campaign."

Mill, division controller for National Supply Division-Armco Steel Corp., is past president of Controller's Institute of America (L.A. Control), National Assn. of Accountants (Long Beach chapter) and the Torrance Chamber of Commerce. He is chairman of the Torrance Industries Tax Committee.

IN ADDITION, Mill is Harbor

area chairman for Community Chest, Torrance district chairman for Red Cross, finance chairman for Little Company of Mary Hospital and co-finance chairman for Torrance Memorial Hospital Building Fund. He is district chairman for Boy Scouts of America and a member of Torrance Rotary Club.

SHAWGER, former president and general manager of California Rubber Products, Inc., is a graduate of the University of Southern California and has been active in business and civic affairs in Hawthorne and Torrance.

A member of Rotary Club for 15 years, Shawger is past president of both the Torrance Kiwanis Club and Torrance Chamber of Commerce. He is vice chairman for special enrollments of the Boy Scouts of America in the Harbor area.

SHAWGER IS A member of The American Legion, four Shrine clubs and the American Chemical Society.

Sonneborn commented that "selection of Fred Mill and Bill Shawger gives the Bruinsma committee two of the most outstanding leaders the Torrance area has produced. I am certain that the work they do in the campaign will immeasurably strengthen our chances of success in the November election."

### Gibson Files For Campaign For Assessor

Councilman John S. Gibson Jr. cited "the need for an up-to-date over-all perspective on county problems and modernized assessment procedures, in order to best serve the public," as his principal reasons for filing Thursday for election to the office of county assessor.

"No matter how honest or well intentioned a system may be, after 60 years it needs to be overhauled to cope with the vast changes that have taken place in every part of our county and every phase of our economy," Gibson declared.

"IT IS DIFFICULT for those who have worked very closely with one system for a long time to get the proper perspective. They can't see the forest for the trees. I am convinced that the county assessor's office needs a fresh, new viewpoint, a modern program and up-to-date techniques of operation, in order to serve the best interests of the people of Los Angeles County."

As an example of modern techniques and modern methods of serving the public, Gibson cited his proposal for "open record sessions," to be held in all revalued areas several months before closing the assessment rolls.

AT THIS TIME, property owners can review the revaluations with the appraisers who made them, and necessary reappraisals and adjustments can be made. This procedure is not just theory," Gibson pointed out. "It has already been put into practice in the second largest county of California, where it has proved so successful that last year — out of the thousands of assessmen's maps in that county — there were only 76 protests. I am sure that the practice of open record sessions will be equally beneficial in protecting the rights of the people of Los Angeles County."

### Committee Post Filled

Dean L. Sears, retired banker, has been named chairman of the chamber of commerce Governmental Affairs Committee.

Purpose of the committee is to cooperate with and assist local, county, state, and national governmental and legislative officials, elected and appointed, in financial and legislative matters; and to strive for the greatest degree of service for each taxable dollar spent in government.

Two subcommittees will be appointed immediately. One committee will work in the area of city government and the other with the Torrance Unified School District.

Sears is a past president of the Torrance Chamber of Commerce and has had considerable experience in local affairs. Before his retirement, he was vice president of the local Bank of America branch.

### New Buyers' Guide Issued By Firm Here

Several thousand purchasing agents and buyers of more than 1,100 firms in 11 Western states and Texas are listed in the newest Aerospace/Electronics Buyers' Directory, published by Information, Inc., of Torrance.

The spring 1962 edition is up-to-date with many recent changes in the industry, the publishers report. The pocket-size directory is designed as a ready calling and mailing aid for marketing departments and salesmen. It will be corrected up-to-date in a fall 1962 edition.

In many instances, buyers are categorized by classes of material, with telephone extensions and even buying code numbers.



# GRAND OPENING

A Fabulous new Food Giant Market opens in Beverly Hills! The newest member of the Food Giant family is the former McDaniels Market, 325 N. Canon, Beverly Hills.

Tale ad  
Giant's  
Royce

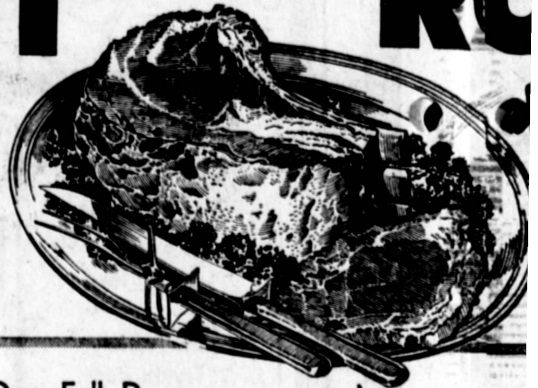


U.S.D.A. "CHOICE" or FOOD GIANT'S "BANQUET PERFECT"

U.S.D.A. "CHOICE"

## CHUCK ROAST

49¢  
lb.



### ENRICHED PILLSBURY FLOUR

5 49¢  
-lb. Bag

INCLUDES 4c OFF

### FRESH LARGE "AA" EGGS

39¢

One Full Dozen

DOLE PINEAPPLE JUICE  
Jumbo 46-oz. Can 23¢

PURE BLEND 3-BEES HONEY  
5-lb. Can 89¢

DAILY DIET DOG FOOD  
16 Tall Cans \$1

NORTH TOLLIS  
12

SUNRIPE JUMBO RIPE OLIVES 25¢  
ISLAND SUN. With the sweet tart taste of the islands. No. 1 flat can.  
SLICED PINEAPPLE 2 for 25¢  
SUNNY HILLS. Wonderful in salads or perfect as a dinner dish. 300 can.  
ASPARAGUS SPEARS NEAR ALL GREEN 29¢  
The easiest way for the finest soups with that homemade goodness. Ass't.  
KNORR'S DRY SOUP MIX 3 Pkgs. \$1  
The tasty, nutritious way to lose weight. Vanilla or chocolate, 8-oz. liquid  
900 - DIET SUPPLEMENT 4 Cans 89¢  
Your cat will love the taste. All chicken, chicken giblets or kidney. 6-oz. can  
CHIC-E QUALITY CAT FOOD 2 for 29¢

AEROSOL CAN BURMA SHAVE  
Regular or Menthol  
Reg. 59¢ 39¢  
WALT DISNEY DESIGNS T.V. TRAYS  
Brass Legs — Protective Cups on Legs  
\$1.50 Value 99¢

BETTY CROCKER — BUTTERMILK PANCAKE FLOUR  
Large 42-oz. Pkg. 49¢  
C.H.B. — FRESH CUCUMBER SLICES  
88-oz. Jar 69¢

M. 4-oz. Jar Incl. 20¢ off  
N.B. 11-1 18¢

DELICATESSEN  
The Finest Cheeses Are Waiting For You At Food Giant. Just Like This Big Eye.  
SLICED SWISS CHEESE 12-oz. Pkg. 59¢  
BETTY CROCKER'S—FUDGE BROWNIES Large 19-oz. Tube 45¢  
ALL VARIETIES—FAMOUS Bob's Dressings Except Roquefort 49¢ 3 16-oz. Btl. \$1

LIQUOR and TOBACCO  
Old Killarney—84 Proof—Blended—Imported Full Fifth \$4.69  
15 YEAR OLD WHISKY  
8 Year Old—Doyle Springs Whiskey Straight Bourbon Full Fifth \$3.39  
Birbeck—Arizona Finest—No Deposit BOCK BEER Case of 24 \$3.39 6 Glass Cans 87¢

ARROWHEAD SPRING PURITAS DISTILLED Water No Deposit, No Return 1/2 Gal 29¢	WESTON Fig Bars 1-lb. Pkg. 39¢	VB Apple Sauce No. 303 Can 19¢	ASSORTED Royal Gelatine 3 Reg. Pkgs. 29¢	CALO Dog Food 2 1 1/2-oz. Cans 31¢	WHITE ROCK DIETONN Beverages 2 16-oz. Btl. 29¢
CONTADINA Tomatoes No. 2 1/2 Can 23¢	PETUNA Cat Food 2 6-oz. Cans 25¢	WOODBURY Toilet Soap 1/2 Price Sale 2 Bath Bars 25¢	TENDERLEAF Tea Bags Pkg. of 48 99¢	Swift • Chopped • Strained Meats for Babies 2 Reg. Cans 45¢	WHITE ROCK Beverages 6 12-oz. Cans 59¢