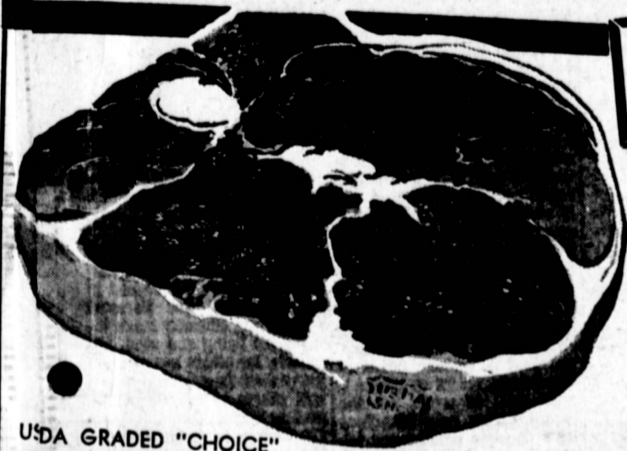


We Give Blue Chip Stamps SHOPPERS MARKETS We Give Blue Chip

# THE BALL GAME 100 TICKETS TO THE OPENING GAME IN THE NEW DODGER STADIUM



(25 Sets of 2 Tickets)



SHOPPERS FABULOUS MEATS ARE FORK-TENDER! EVERY POUND GUARANTEED TO SATISFY OR YOUR MONEY BACK!

USDA GRADED "CHOICE"  
**ROUND STEAK**

**79¢**

USDA GRADED "CHOICE"  
**RUMP ROAST**

USDA GRADED "CHOICE"  
**ROUND BONE ARM SWISS STEAK**

USDA GRADED "CHOICE"  
**BONELESS BRISKET CORNED BEEF**

**69¢**

**TURKEY WINGS**  
DELICIOUS FOR STEWS, SOUPS AND SALADS

USDA GRADED "CHOICE"  
**POT ROAST**

USDA "CHOICE"  
**CHUCK STEAKS**

USDA "CHOICE" • BONELESS  
**ROLLED ROUND STEAK ROAST**

USDA GRADED "CHOICE"  
**RIB & CUBE STEAKS**

MADE FRESH HOURLY  
**GROUND BEEF**

FRESH "GRADE A"  
**ROAST • FRY • BAR-B-Q CHICKENS**

STOCK YOUR FREEZER SPECIALS!

USDA "CHOICE"  
**Full Sides of BEEF**

INCLUDES PORTERHOUSE, ROUND, T-BONE, FILET MIGNON & N.Y. CUT STEAKS

CUT AND WRAPPED FREE!  
**BEEF HINDQUARTERS**

INCLUDES T-BONE, PORTERHOUSE, ROUND, TOP SIRLOIN AND FILET MIGNON STEAKS! CUT & WRAPPED FREE

**BEEF ROUNDS** **BEEF LOINS** **BEEF RIBS**

**BEEF CHUCKS** **WHOLE PORK LOINS** **SADDLE OF LAMB**

MORE LEGS PER POUND FRESH "GRADE A"  
**4-LEGGED FRYERS**

## 'Streetcar' Proving Hit With Audiences

By BETTY SCHROEDER  
Once again enjoying a successful hit, Chapel Theatre's cast of "Streetcar Named Desire" is playing to full houses each weekend, Friday through Sundays at 4164 Pacific Coast Hwy., located on Smith Bros. Shopping Center.

So powerful is the drama, that the actors are virtually carried away with the realism, and each performance has a variation of the scenes in which there is violent action required. So absorbed and realistic is the fight scene involving Stanley (Ed Long) and his poker-playing friend Mitch, Steve, and Pancho (played by Robert Conner, Ed Rawlinson, and John Sanchez respectively) that the cast has been thinking of ordering a "purple heart" medal for Ed Long who has received many bruises from the outcome, and occasionally has to be patched up between scenes.

IN COMPARING audience reactions to the performances, one can only say that the viewers are mostly impressed with the almost professional production of Chapel Theatre's efforts. The public generally does not seem to expect the professional type performances that comes from Chapel Theatre, and is always amazed at how natural, life-like, and realistic the plays become.

Thus, as in "Streetcar," the audience becomes part of the play and leaves, not only with the feeling of having been fully entertained, but having been a part of the play itself.

THE DIFFICULT role of Blanche is portrayed by Mitzi Phillips, who at once has the sympathy and contempt of the audience, as her life is slowly and painfully brought into view by the inconsiderate and unfeeling Stanley. While having to bear the brunt of the clash between her husband and sister, Stella, played by Fran

Ward, she tries to keep harmony between the two. It is the consensus of past audiences that this production of "Streetcar," directed by Fred J. West, is well worth seeing for the dramatic abilities of the cast in particular. Reservations should be made in advance by calling FR 2-9636 or FR 8-9017 evenings. Curtain time is 8:30 p.m.

LITTLE GLORY or public praise is ever given to the people back stage who handle sound, lighting, and props; therefore, little is publicly known about the many amusing incidents which occur backstage during performances, when the people behind the scenes must be on their toes

to keep things in their proper places, manage split-second timing for lighting and sound effects, plus the many last-minute problems which must be solved before curtain time. In one night's performance, Lynda Gorchester of Torrance, who assists Jean Ellsworth, also of Torrance, in seeing that all props are placed for each scene, had a radio thrown at her, was splattered by broken glass, and was drenched with water as "Stanley" was doused for one scene!

ALSO TO BE commended is co-producer of Chapel Theatre, Steve Sands, who designed the set for "Streetcar" and gave it the effect of being the

perfect surroundings for uncultured, rugged, and unrefined Stanley. The perfect timing, shading, and dramatic effects of the lighting is capably handled by Noel Shire, and is assisted by Bob Bluman, Stage Manager, who takes care of the sound effects.

It has been most gratifying to note how the paintings of Mrs. Vara Grube of Torrance add such charm and color to the auditorium in Chapel Theatre. These are some of the selections taken from her collection of traditional as well as modern works Mrs. Grube created while touring Europe, and will be exhibited in the theatre during the entire showing of "Streetcar."

## WIN LEVI'S Fun in the Sun KIT

Everything you need for a super Summer!

- Air Mattress with Built-in Pump
- 12" Barbecue Grill
- 4-Piece Badminton Set
- 3-Piece Swim Set—Snorkel, Mask & Flipper
- Bongo D



NOT A CONTEST! NOTHING TO BUY!

COME IN AND FILL OUT YOUR FREE ENTRY BLANK BETWEEN MARCH 15 & APRIL 21, 1962

Something NEW from LEVI'S



SLIM-FIT JEANS

In Tan • Black Green  
Here's the classic cowboy cut you want—in a rugged, heavyweight, Sanforized fabric, in your choice of three handsome colors. For work, for play, for leisure wear, try a pair of LEVI'S Slim-Fit Jeans! Only

**3.98**

Boys Sizes 6-12 . . . 3.29

OUR best seller... YOUR best buy!



LEVI'S

The Original Blue Jeans  
TOPS FOR WORK OR PLAY!  
• Made of world's heaviest denim  
• Copper Rivets at strain points  
• Famous slim, trim cowboy cut  
• Guaranteed—a new pair free if they rip!

**3.59**

Sizes 27-29 . . . 3.79  
Sizes 30-42 . . . 3.99

Best buy for boys!



LEVI'S DOUBLE-KNEE WESTERN JEANS

87% TOUGHER THAN ORDINARY JEANS

**2.98**

Sizes 14-16 & Huskies 3.50

USE YOUR INTERNATIONAL — OR — BANKAMERICARD

WESTERN, young lady!



LADY LEVI'S

**3.98**

Sizes 22 to 36

### WINES-LIQUORS

SMOOTH AND TANTALIZING SHOPPERS VODKA FULL FIFTH \$2.98 FULL QUART \$3.69

9 YR. OLD • 100 PROOF SPRUCE SPRING KENTUCKY STRAIGHT BONDED BOURBON FULL FIFTH \$4.49

66.6 PROOF • 100% SCOTCH SCOTTISH REGAL SCOTCH WHISKEY FULL FIFTH \$4.89

COLGATE • GIANT TUBE TOOTH PASTE REG. 53c **39c**

FOR NORMAL • DRY • OILY HAIR BRECK SHAMPOO REG. 60c **49c**

SHOP AT SHOPPERS WHERE YOU ALWAYS SAVE A LITTLE BIT MORE



SAN PEDRO 25th Street at Western Ave.  
LONG BEACH East Wardlow at Cerritos

SALVO DETERGENT TABLETS Reg. 41c

NABISCO PREMIUM SNOWFLAKE CRACKERS 1-lb. 33c

SARA LEE FROZEN CHEESE CAKE 11-oz. 69c

PACIFIC COAST HWY. AT CRENSHAW BLVD. TORRANCE

STRUM'S 1261 SARTORI AVE. DOWNTOWN TORRANCE

FREE PARKING Open Daily 9:30 to 6 Friday 10 A.M. to 9 P.M.