

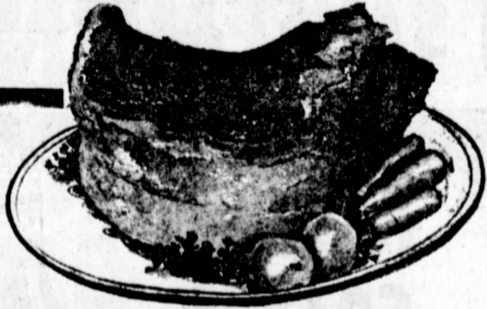


PLAZA QUALITY WHOLESALE MEATS

2507 Pacific Coast Hwy., Rolling Hills Plaza, Torr.

Open Sunday thru Wednesday 9 a.m. to 6 p.m.; Thursday, Friday, Saturday, 9 a.m. to 9:30 p.m.—Ph. DA 5-2782

BEEF — SALE — NOW — ON



PRIME RIB ROAST

You'll enjoy this, the KING of all roasts. Appreciate the delicious flavor & Parker's... "Extra... Value" trim... "Short-Cut" to give you more meat for your dollar. Our aging racks are loaded.

69^c lb

Extra Lean **SHORT RIBS**

29^c lb

Fill Your Freezer NOW!



BONELESS CLOD, RUMP TOP ROUND or SILOIN TIP ROLLED ROAST

79^c lb

PORK STEAK

Also... **PORK LOIN END ROAST**

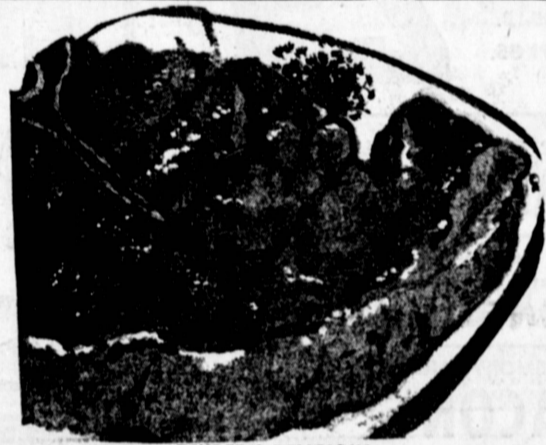
49^c lb

STEAK SALE!

PORTER-HOUSE

Tender, Trimmed Waste-Free

99^c LB



TENDER & DELICIOUS TAILS & EXCESS FAT REMOVED

T-BONE STEAKS

OUR OWN PURE **PORK SAUSAGE**

39^c lb

LEAN, FRESH **GROUND BEEF**

39^c lb

ROUND STEAK Center Cut **69**^c lb.

98^c LB

LUNCHEON MEATS

- Sandwich Loaf
- Cotto Salami
- Pimiento Loaf
- Biltmore Loaf
- Olive Loaf
- Pickle Loaf

2 Lbs. \$1.00

4-LEGGED **FRYING CHICKENS**

39^c lb



CHUCK ROAST

7-BONE or CHUCK

45^c lb

NONE BETTER

CHUCK STEAK 45%

ALL MEAT **WIENERS** OR **BOLOGNA**

39^c lb.

EASTERN **Sliced BACON**

49^c lb.

PLUS-MANY-MANY LOW PRICED ITEMS TOO MANY TO MENTION
 REMEMBER OUR AD IS FOR 7 DAYS -- NO GIMMICKS -- JUST QUALITY FOOD!