

BETTER FOOD MARKETS

and Border MARKETS

Prairie at Redondo Beach Blvd.
OPEN 7 DAYS 9 A.M. TO 10 P.M.

223rd St. at Avalon Blvd.
OPEN 7 DAYS 9 A.M. TO 10 P.M.

5305 Torrance Blvd.
OPEN DAILY—9 a.m. 'till MIDNIGHT



CHOPSTICK
Extra Enriched
LONG GRAIN RICE

Large 2-lb. Pkg.

25¢



PACIFIC CRISP FRESH
CRACKERS STA-CRISP

1-lb. pkg. Salted or Unsalted

17¢

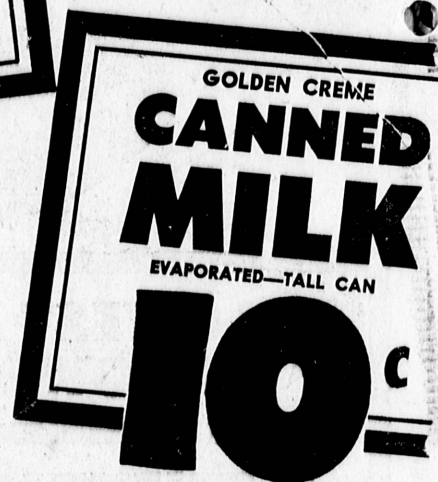
BLUE CHIP STAMPS



CAMPBELL
TOMATO SOUP

REFRESHING—TALL CAN

10¢



GOLDEN CREME
CANNED MILK

EVAPORATED—TALL CAN

10¢

The 'Choicest' of Meats



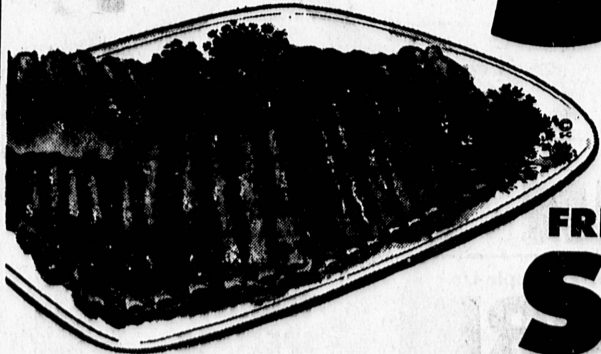
Aged Young Tender Beef

CHUCK STEAK

49¢ lb.

CENTER CUT
BONELESS

45¢ lb.
79¢ lb.



FINEST YOUNG, TENDER AGED STEER BEEF

CHUCK ROAST

39¢ lb.



YOUNG—TENDER—FRESH

FRYING CHICKENS

WHOLE BODIED

CUT-UP

29¢ lb.
31¢

O-BONE ROAST **53**¢ lb.
BEEF STEW **79**¢ lb.

FRESH EASTERN BABY BARBECUE SIZE

SPARERIBS

39¢ lb.

NOTHING TASTES
QUITE AS GOOD
AS THESE FINE
SPARE RIBS
B-B-QUEUED YOUR
FAVORITE WAY!



LUSCIOUS BRISKET OF
CORNE BEEF

45¢ lb.

GROUND FRESH HOURLY

GROUND CHUCK

3 Lb. Pkg. **\$1.49**

HALIBUT STEAKS 59¢ lb.

WORTH MORE

SLICED BACON

1-lb. Window Pkg.

39¢

ARMOUR CAMPFIRE—1 lb. pkg.

SLICED BACON 49¢



FEILERS
SANDWICH PATTY

Just Heat; Throw Between Two
Slices of Bread; Bite and Enjoy

5¢

ELEVEN CELLAR'S
AWARD WINNING

WINES 69¢ ea

SWEET
OR DRY

FIFTH

SNOWCREST

BEER

16-oz. King Size

6 16-OZ. CANS **\$1.15**

Case of 24 Cans . . \$4.49