



BEST BUYS FOR THE WEEK

In Torrance Markets

Busy shoppers with Christmas on their minds are trying to stretch food budgets . . . and still give their families nourishing, interesting meals. Save pennies and time by choosing some economy cuts of meat for easy-to-heat dishes. Oxtails, for example, considered by many to be the best eating meat in beef, make wonderful stew or soup.

BRAISED OXTAILS

For 6 portions, use 1 oxtail (about 2 pounds), cut in 2-inch lengths. Roll in flour and brown in 2 tablespoons fat. Add 1 cup water, 1 onion

(chopped), and 1 cup tomatoes. Season with salt, pepper, celery salt, 4 whole cloves and 1 bay leaf. Cover and simmer about 3 hours . . . or until tender. Add diced carrots and sliced mushrooms and cook 1/2 hour longer. Add one-third cup sherry or lemon juice the last 10 minutes.

Keep in mind other variety meats, or sundries. Some of the quick-cooking ones are: brains, kidneys, liver, and sweetbreads. Other good-for-a-change meats, but those which take longer cooking, are: hearts, tongue, and tripe.

These are easy to reheat.

During December we can expect to have an abundance of beef . . . two to four per cent more than last year's ample supply. Pork also will be in good supply, and lamb holding up to fill demands. Of course we'll have turkeys, turkeys, turkeys. We are promised about 14 per cent more than we had a year ago. And there is a big supply of tender, meaty broilers fryer chickens.

ON THE PRODUCE STANDS

Fine quality selections in the "old standbys," apples, avocados, bananas, grapes, grapefruit, oranges, lemons, pears.

Cabbage, carrots, cauliflower.

NOVEMBER 30, 1961

THE TORRANCE HERALD

17

Church Guild Hears Speaker

The Rev. Harlan Waite of All Nations Foundation in Los Angeles spoke on history of the foundation recently at a meeting of the Wesleyan Service Guild of the First Methodist Church.

Three new members were also welcomed to the guild. They were Mrs. Marion Whisler, Mrs. Barbara Sebring, and Mrs. Marion Gunter.

If the doctor says you have a case of lentigo, you've got freckles.



EASY CREDIT
LOW PRICES
QUICK PLATE
REPAIRS
AND RELINES
NEW AIR DRILL

FAMILY DENTAL SERVICE

NO MONEY DOWN — 18 MONTHS TO PAY

Pensioners & Public Assistance Cases Welcome

IMMEDIATE DENTURES
FILLINGS PLATES
EXTRACTIONS X-RAY
EXTRACTIONS WITH SLEEP BY ARRANGEMENT

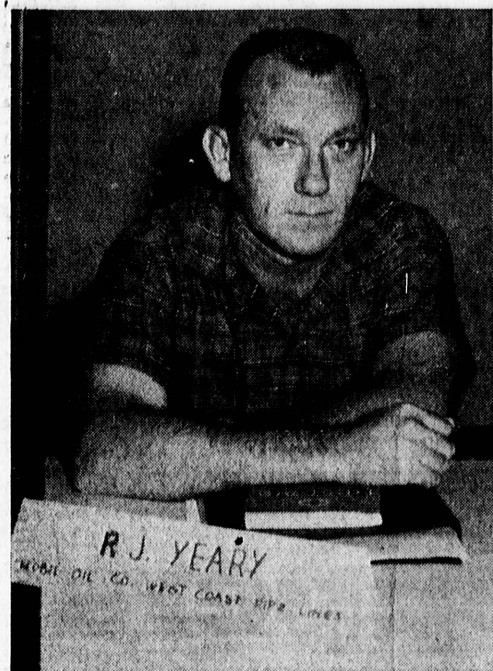
DR. FREEMAN
CREDIT DENTIST

SERVING THE ENTIRE SOUTH BAY AREA

4537 Redondo Beach Blvd. Lawndale
DIRECTLY OPPOSITE SOUTH BAY CENTER

OPEN DAILY
SATURDAYS
and EVENINGS
No Appointment
Necessary

PHONE:
370-2588



COMPLETES CLASS . . . One of some 46 business and industrial personnel who have just completed a Red Cross industrial first aid class is R. J. Yearly, fire and safety supervisor, Mobil Oil Co. Purpose of the 11-week training course is to give concentrated instruction in standard, advanced and instructors' first aid. Personnel who complete the course are expected to train fellow employees in first aid techniques.

the akron



Sale of Men's Corduroy Blazers

- sportcoats of ineffably handsome mid-wale corduroy . . . jaunty, relaxed, versatile!
- your multi-purpose blazer, sir . . . for sport or dress, for on the town or on the loaf . . . vital to the male wardrobe these good days.
- the well-defined corduroy is 100% cotton . . . it's lined in silky rayon . . . and the buttons are brass blazers, of course
- our colors are antelope or olive . . . and our sizes are 36 thru 46
- in men's shops these sport \$19 price tags

8.99

sorry, no mail orders

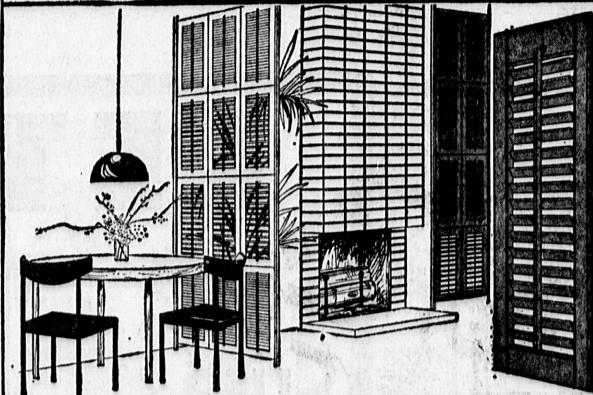


Posture Steno Chair

- are you sitting more now but enjoying it less?
- relax into this posture-perfect chair . . . designed for comfort, health, efficiency!
- adjustable height . . . strong spring back (it swings with you) . . . well-padded seat and back . . . easy roll casters
- modern design . . . with a leatherlike cover in light grey, light blue, beige, light green or charcoal green
- for home or office or campus . . . about \$25 in office equipment stores

13.99

sorry, no mail orders



Movable Wood Shutters

- beautifully grained shutters of selected imported hardwoods . . . your decorating dream comes true!
- movable louvers . . . they'll admit as much light and ventilation as your heart desires
- paint them, stain them, leave them as is . . . and install them with just a screwdriver!

7"x20" . . . 69c
9"x20" . . . 89c
12"x20" . . . 98c
7"x25" . . . 89c
9"x25" . . . 1.19
12"x25" . . . 1.29
7"x30" . . . 1.29
9"x30" . . . 1.39
9"x36" . . . 1.79

• and all the shutter hardware, tool

sorry, no mail orders



India Madras Cotton Shirts

- madras cotton from the looms of the orient . . . east meets west in the ivy styling!
- gentle, whisper-light, colorfast, lasting . . . in colors both subdued and spectacular
- bold stripes, shadow stripes, hardy solids . . . sizes s, m, l, xl
- for your casual mood . . . pick up a couple!

1.59

2 for \$3

sorry, no mail orders



Men's Slacks in Muted Plaids

- just a hint of a pattern . . . muted plaids, as new as now!
- smartly tailored with neat, narrow lines . . . a wrinkle fighting rayon-acetate blend
- one pair has the accent on charcoal-brown, matched with a muted olive
- the other is black with vague hints of navy
- what the well-dressed man will wear . . . from now on . . . in our sizes 28-38
- elsewhere you'd pay \$7 pr.

3.99 pr.

sorry, no mail orders

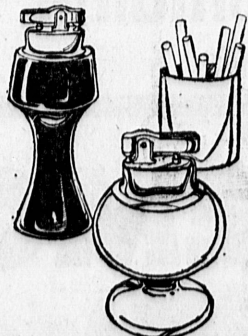


Table Lighter

- outstanding . . . and they are wild!
- three distinctive shapes for you . . . in a four-keyed choice of nine hues:
- choose ebony, polar blue, ivy green, mustard, lavender, white, pink, orange
- for a table, a desk, a friend, a gift!

99c

sorry, no mail orders

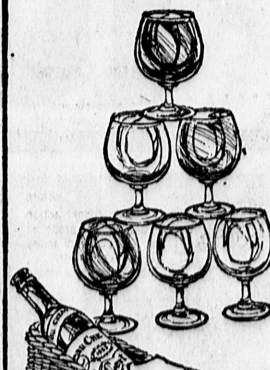


Neanthe Bella Palm

- a handsome indoor evergreen . . . graceful, feathery, pettiel
- narrow deep-green leaflets on slender fronds . . . the feeling is airy and tropical
- a lovely tubbed or potted specimen . . . or in a dish garden or window box
- it thrives outdoors here (doesn't everything?)
- in 4-inch pot

69c

sorry, no mail orders



Set of 6 Brandy Snifters

- crystal elegance . . . intoxicating color!
- a matching set of snifters . . . linking additions to your cabinet, bar, party!
- assorted colors . . . one each in blue, green, violet, amethyst, orange, black
- we've set up six for you . . . invite five friends!

set of 6 1.99

sorry, no mail orders



Cascading Fiberglass Waterfalls

- the beauty of nature . . . brought home to you!
- so soft and relaxing . . . a bubbling fountain which looks like rock . . . and cool water cascades down its three tiers!
- about 2 feet long . . . no plumbing or attachments . . . its electric recirculating pump (included) sends the water round and round, endlessly!
- a craggy fiberglass addition to an indoor or outdoor scene . . . just plug it in and watch it come alive!

19.99

• giant 36" waterfall 29.99

sorry, no mail orders



Chinese Juniper

- a fast-spreading, easy-growing carpet of green!
- the pitter juniper . . . finely-textured leafage which stays low to the ground
- an excellent cover for uneven terrain . . . or as a bank, hedge or low screen
- in gallon can

69c

sorry, no mail orders

catch a star...
put it on your finger

If you've always wished for a fabulous Linde Star Sapphire or Star Ruby here is your opportunity! Imagine wearing one of these dramatic and fascinating gems . . . with the mysterious star forever shining and glowing deep in its heart. Woman's ring enhanced with 2 fiery diamonds. Man's ring in smart florentine finish. All in 14K gold settings.

ONLY \$69.50 EACH \$6 MONTHLY
NO MONEY DOWN • A YEAR TO PAY!

Lawson's
SOUTHERN CALIFORNIA'S LARGEST JEWELERS

NOW OPEN NIGHTS UNTIL CHRISTMAS
1301 SARTORI AVE.
Downtown Torrance FA 8-4313

OPEN DAILY
9 A.M. to 9:30 P.M.
SUNDAYS 10 to 7

West LOS ANGELES
Sepulveda & National EX 1-5225

SOUTH BAY Torrance
Hawthorne Blvd. & 180th St. 370-3535