



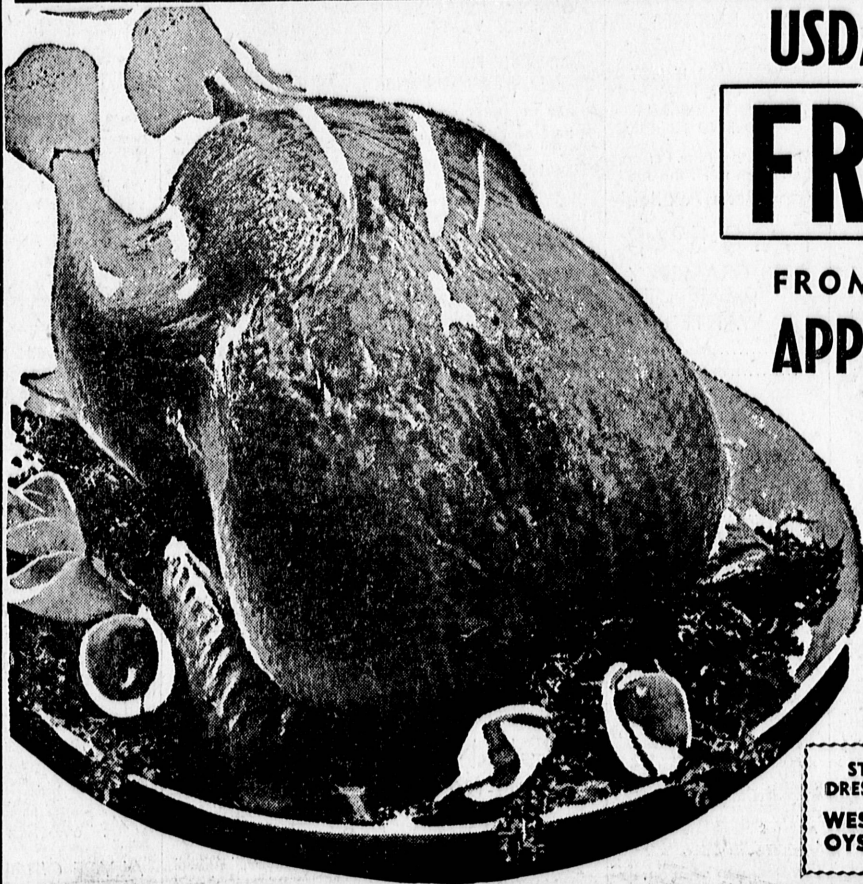
# PLAZA QUALITY WHOLESALE MEATS

Prices  
Effective  
Nov.  
20 - 29

2507 Pacific Coast Hwy., Rolling Hills Plaza, Torr.

Open Sunday thru Wednesday 9 a.m. to 6 p.m.; Thursday, Friday, Saturday, 9 a.m. to 9:30 p.m.—Ph. DA 5-2782

PERSONALLY SELECTED STEER BEEF and EASTERN PORK



USDA GRADE 'A'  
**FRESH!**

FROM ...  
APPLE VALLEY

FRESH DRESSED  
BIRDS ONLY

8 to 16-lb.

**HENS**

STUFF YOUR BIRD WITH  
DRESSING MADE WITH FRESH  
WESTERN OYSTERS 12-oz. Jar **59¢**

*Thanksgiving*  
**TURKEYS**  
**39** <sup>c</sup>/<sub>lb</sub>

**BONELESS CLOD  
TOP ROUND or SILOIN TIP  
ROLLED ROAST**

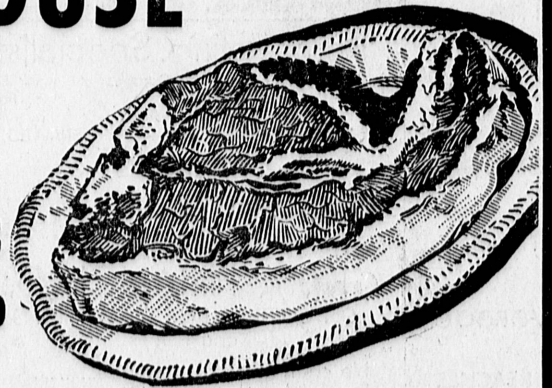


**79** <sup>c</sup>/<sub>lb</sub>

**STEAK SALE!**  
**PORTERHOUSE**

Tender, Trimmed, Waste-Free

**98** <sup>c</sup>/<sub>lb</sub>



CENTER CUT 7-BONE or O-BONE

**CHUCK  
ROAST**

**45** <sup>c</sup>/<sub>lb</sub>

None Higher

Chuck  
Steak  
39¢

NONE  
BETTER

All Meat  
**WIENERS or  
BOLOGNA**

**39** <sup>c</sup>/<sub>lb</sub>

**CENTER CUT  
ROUND STEAK**

**69** <sup>c</sup>/<sub>lb</sub>

TENDER & DELICIOUS  
TAILS & EXCESS FAT REMOVED  
**T-BONE STEAK**

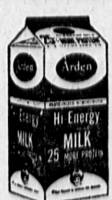
**89** <sup>c</sup>/<sub>lb</sub>

**SIRLOIN TIP or CUBE**

**STEAK 79** <sup>c</sup>/<sub>lb</sub>

**FRESH LEAN  
GROUND BEEF**

**3** <sup>LBS</sup> **\$1**



**NEW Hi-Energy  
MILK**  
25%  
MORE PROTEIN\*  
You can taste the difference  
\*Than Required by California Milk Standards

1/2-Gallon

**49** <sup>c</sup>

MORRELLS  
YORKSHIRE  
SLICED  
BACON  
**49** <sup>c</sup>/<sub>lb</sub>