



"Eric's face should be cleaner than mine... he's been washing it ten months longer than I have!"



DEMONSTRATION... Ralph Taeger, co-star of the new motion picture "X-15," shows James McCloud the flight characteristics of the world famous rocket plane and the features of the X-15 line of boys' footwear now available exclusively at Sears, Roebuck and Co. retail stores.

Sears Introducing Rugged Shoes for Boys

A name usually associated with the Southern California built edge-of-space research plane, capable of traveling six times faster than the speed of sound, has now been utilized to designate a new line of boys' shoes that will wear longer. Science, working in two separate fields, has now made two major breakthroughs.

ONE, IN THE X-15 rocket plane, forerunner of the earth-to-moon space ship and a prototype of the airplanes which will someday span the continent in one-half hour. The second, in the new line of X-15 boys' footwear, enables parents to stop worrying about shoes wearing out. Permanently bonded to the uppers, the polyvinyl soles and heels of the new shoes are guaranteed for the life of the shoes. In addition, as another aid to the busy homemaker, the soles will not mark floors.

OTHER NEW features of the X-15 line of boys' shoes include a Sta-Brite scuff-resistant leather upper, full cushioned insole from heel to toe and a crushproof polyvinyl counter. The X-15 line of boys' shoes is available exclusively at Sears, Roebuck and Co. retail stores, and is named after the record-breaking rocket plane upon which the new motion picture "X-15" is based. Ralph Taeger co-stars in the dramatic movie of the world famous research plane, opening Wednesday, Nov. 22, in neighborhood theaters.

Art Work On Display

Mrs. Enid B. Helvey of 4403 Newton St., an art instructor at Los Angeles City College, has an oil color painting on display at the college fine arts gallery.

Her painting is part of 31 works on display by the college's art department faculty. Open to the public, the exhibition will run until Monday, Nov. 27. The gallery, 855 N. Vermont Ave., is open from 8 a.m. to 10 p.m. Monday through Thursday and 8 a.m. to 4 p.m. on Fridays.

The exhibit features paintings, ceramics and sculptured works by eight art instructors.

Monodrama Tickets Out

Tickets are still available for the Christmas program, a monodrama entitled "Mary, Mother of Jesus," to be presented at Wayfarers' Chapel, Portuguese Bend, Dec. 3 and 10.

Dorothy Carter Haven, nationally known dramatist who has been called a "one woman theater," will portray Jesus' Mother in five scenes extending from the family circle in Nazareth to the temple in Jerusalem.

Two performances—at 4 and at 7:30 p.m.—are scheduled on each of the Sunday dates. Free reserved tickets may be obtained by writing the Wayfarers' Chapel or telephoning FR 7-1650. Seating will be limited.



"It was for Spotty!"



Thanksgiving

LET ALL OF US GIVE FOR freedom to speak and say who shall lead us FOR mistakes made and priceless lessons learned from them FOR imperfections that keep us striving for perfection ... AND for the Divine Spirit that

Oven-Ready • Double-Breasted

TURKEY

YOUNG TOMS 16-22 LBS. **29**

YOUNG HENS 10-14 LBS. **33**



You Can Depend on a Shoppers Turkey!

Only the world's finest, USDA Government Inspected turkeys are sold at Shoppers. Broad, double-breasted, oven-ready, easy-to-carve birds. More white meat for everyone! Buy one. You'll like it.

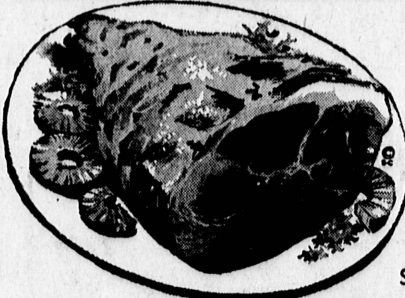
COMPLETE SELECTION OF THE FINEST "SELECTED" POULTRY

Whatever your taste dictates in the way of a Thanksgiving bird... you'll find it at Shoppers... every one "Selected," oven-ready, heavy with meat.

JR. BELTSVILLE TURKEYS... GEESSE... LONG ISLAND DUCKLINGS... ROASTING CHICKENS

FRESH TURKEYS

For those of you who prefer fresh turkeys, we have available, in limited supply, all sizes of fine, top-quality, plump, double-breasted fresh birds grown on California's finest turkey ranches. For a festive, old-fashioned California dinner, try one! You'll be glad you did.



FARMER JOHN FULLY COOKED SHANK PORTION

CENTER CUT HAM SLICES **98¢**

HAMS 39¢

USDA "CHOICE" • THICK or THIN **ROUND STEAK... 79¢**

USDA "CHOICE" BEEF **RUMP ROAST... 79¢**

USDA "CHOICE" • CHUCK BEEF **POT ROAST..... 49¢**

USDA "CHOICE" BEEF • LEAN **SHORT RIBS..... 29¢**

"FREEZER SPECIAL" FULL SIDES OF USDA "CHOICE" BEEF

Includes Filet Mignon, Porterhouse, T-Bone, Boneless N.Y. and Round Steaks.

49¢

CUT AND WRAPPED FREE

FRESH • GRADE "A" ROASTING CHICKENS

• ROAST, FRY OR B-B-Q FOR A WONDERFUL DINNER!

39¢

FRESH • GRADE "A" 4-LEGGED FRYERS

• MORE LEGS PER POUND!

49¢

NO Necks • NO Giblets • NO GIBLETS OF THE

BEST FRYERS

• ALL LEGS, WINGS AND BRASTS

49¢

PRINCELLA **WHOLE YAMS** 4 No. 2 1/2 Cans **\$1**



GOLDEN CREME • RICH **EGG NOG** Quart Carton **49¢**

A KTVV FEATURE VALUE **NESTLE'S DECAFE** 2-oz. Jar **49¢**



SLIPPERS Gift-Boxed Gold-Trim

Your favorite stretch slippers in beautiful new colors trimmed with gold thread. A lovely gift! **88¢**

ALL GRINDS • RICH • FULL-BODIED **FOLGER'S COFFEE** 1-lb. Can **59¢**

LIBBY • FOR PIES • PUDDINGS • CANNED **PUMPKIN...** 2 No. 2 1/2 Cans **29¢**

MARCAL • PAPER WRAP • 80-CT. **PAPER NAPKINS** Pkg. **10¢**



STOKELY'S • FRESH PICKED and CANNED **APPLE SAUCE** 2 No. 303 Cans **29¢**

KRAFT • DELICIOUS • MINIATURE **MARSHMALLOWS** 6 1/2-oz. Pkg. **15¢**

IRIS • WONDERFUL FOR GARNISH • SPICED **CRABAPPLES** No. 303 Jar **29¢**

KEYSTONE • PIECES AND STEMS **MUSHROOMS** 6 2-oz. Cans **\$1**

WINES • LIQUOR

ON TURKEY D.Y. BRING OUT THE FAVORITE

You will find a fine wine for every taste, our vast selection of imported and American wines, wine enhances every meal.

SMOOTH and TANTALIZING **VODKA** SILK B

FULL 5th **\$2.98** FULL Quart **\$3.69**

LOS ANGELES Pico at La Cienega Open 9 AM to 9 PM Daily Sunday 9 AM to 7 PM

E. LOS ANGELES 1819 E. First St. Mon.-Thurs. & Sat. 9 AM-9 PM Friday 9 AM to 10 PM Sunday 9 AM to 7 PM

SANTA MONICA Lincoln Blvd. at Ocean Park Open 7 days a week 24 hours a day!

SANTA MONICA Wilshire Blvd. at Berkeley Open 7 days a week 9 AM to 10 PM

WESTCHESTER Lincoln Blvd. at Manchester Open 7 days a week 9 AM to 10 PM

HIGHLAND PARK Figueroa at Ave. 45 Open 7 days a week 9 AM to 10 PM

INGLESIDE Vinton Ave. at 10th Open 7 days a week 9 AM to 10 PM