



**HONORED . . . Mrs. Golda Schweizerhof, who resides at 22615 Leyte Drive, was cited this week for completing 20 years of service with the J. J. Newberry Co. here. Employees honored Mrs. Schweizerhof with a surprise dinner to commemorate the occasion. (Herald Photo)**

## Publisher to Describe Eichmann Trial Tuesday

A combined general meeting of the congregation of Temple Brotherhood president, will call for brief reports from their chairmen.

Mrs. Earle Sumpter, second vice president of Sisterhood in charge of programming, will then present the guest speaker for the evening, Herb Brin.

Brin is publisher and editor of the Heritage chain of Jewish newspapers which serves the Fresno, Bakersfield, San Diego and Los Angeles areas. He is a special feature writer

## ... Scouts

(Continued from Page 1)

Harbor District and engineer with Shell Oil Co., who developed a commissioner staff which has grown to nearly 50 adult members; Linden H. Chandler of Lomita, sand and gravel firm owner, who as a member-at-large has served on finance committees to raise Scout funds;

**ROBERT F. JONES SR.** of Torrance, a North American Aircraft engineer and scoutmaster who participated in a multitude of camping trips and Order of Arrow events; and Auburn J. Standley of Gardena, who as a member-at-large led many scouts to the Eagle rank and has been active in Order of Arrow.

Other officers elected to serve with Dunlap were Richard Christensen, Tom Mill, and William Shawger, all district vice chairmen.

**NAMED TO SERVE** as district representatives to the council, in addition to the three vice chairmen, were:

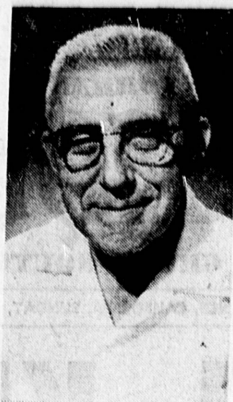
Dr. J. H. Hull, A. F. Ben-schiedt, Andrew P. Marinovich, Lloyd Menveg, Dr. A. N. Posner, and James L. Rush.

Konstan was elected to serve as the district's commissioner.

During the event, recognition awards were presented to outgoing officers, den mothers, and other scouting leaders.

for the Los Angeles Times, and most recently covered the historic Eichmann trial in Jerusalem for the Times. He will talk about his first-hand impressions of the Eichmann trial.

At the conclusion of the evening, refreshments will be served in the Temple lounge.



**ERNEST SOULE**  
Given Pin

## Two Local Men Honored

Lawrence Peffer, 4720 Pacific Coast Hwy., and Ernest Soule, 3144 W. 181st St., were recently honored on the 15th anniversary of their em-



**LAWRENCE PEFFER**  
14 Years

ployment with The Garrett Corp. AirResearch Manufacturing Division, Los Angeles.

During brief ceremonies recognizing their tenure of service, they were presented with the Garrett diamond pin by General K. B. Wolfe, corporate executive vice president.

## Torrance High Play Scheduled For Dec. 1, 2

Thornton Wilder's play, "Our Town", chosen as the senior play by the class of 1962 at Torrance High School, will be presented in the auditorium at 8 p.m. on Dec. 1 and 2.

"Our Town" uses little scenery in its presentation, the audience supplies the scenery imaginatively. Sixty-five hopeful Thespians are cast in "Our Town".

Among leading cast members are Jerry Roberts, Carol Echols, Marvin King, Carol Porterfield, Dave Mullen, Beverly Anderson and Ron Kling. Buddy Ashbrook, teacher of English and drama, is directing "Our Town". Kerry Sumowski is his student director.

Top supporting roles in "Our Town" are taken by Jimmie Lawrence, Carol Steenbeck, Larry Kulp, Tim May, Ron Heller, Eugene Denny, Jeffery Carpenter, Rich Rayls, Larry Gibson, Betty Lou Kautto, Kay Wieman, Darlene Meeker, Bob Enrich, Tom Copper, Connie Zimmerman, Joann Portlock, Toni Jensen, and Bill Cosby.

Tickets will be available in the foyer of the auditorium on the night of the performance.



"Don't call yourself a fool—your friends may suspect you have inside information."

Established Jan. 1, 1914

## Torrance Herald

Member of National Association of Newspaper Publishers Assn. Verified Audit Circulation

Publication office and plant, 1619 Gramercy Ave., Torrance, Calif. Published semi-weekly, Thursday and Sunday by King Williams Press, Inc. Entered as second class matter January 30, 1914 at Post Office, Torrance, California, under act of March 3, 1879.

King Williams Glenn W. Pfeil Co-Publishers

Reid L. Bundy—Managing Editor Doug Anderson—Display Adv. Mgr. Darrell Westcott—Circulation Mgr. Chas. R. Thomas—Mechanical Sub. Adjudicated a legal Newspaper by Superior Court, Los Angeles County, Adjudicated Decree No. 218470, March 30, 1927.

**SUBSCRIPTION RATES:** By Carrier, 50¢ a month. Mail subscriptions \$9.50 a year. Circulation office FA 8-4000.

## Pantomime Show Slated

Presenting her comic version of "For Humans Only," Lotte Goslar and her pantomime circus will appear at El Camino College in the Campus Theater at 8:30 p.m., Nov. 21.

Miss Goslar's program combines dance, pantomime, music, clowning, parody, circus, cabaret, music hall, and an element of the grotesque.

This is done as the performers feel like doing it, without rule, but has been written of in German newspapers as "rich in fantasy and growing in its spiritual and dance-wise inventions."

All seats for her El Camino College appearance must be reserved.

In Amsterdam, Lotte Goslar's dance parodies were described as "hitting the heart and laughter muscles at the same time."

European reviews have written that "Lotte Goslar and Ensemble are showing something entirely new and original in art form . . . ending in an enchantingly unforgettable evening."

In Switzerland critics noted "The program is chuckful of ideas, humor and wit. Lotte Goslar does not speak all evening, but she says a thousand times more and better what words try to say. She speaks with a twist of the wrist, twinkling of her eye, hidden giggle, or only with a little finger."

Many other praises have been written of Miss Goslar in both the European and American press.

"Nobody can beat a TV weather man at scratching up a map."—Louis Nelson Bowman, King City (Mo.) Tri-County News.



**WINNING AWARD . . . Members of Boy Scout Troop 732, sponsored by the Torrance Elementary PTA, are shown here during a recent 132-mile hike on the famed John Muir trail in the Sierras. The Scouts were cited for their achievement at a recent Court of Honor which followed a pot-luck dinner at Torrance Park.**

## Nazarene Church to Observe 25th Year

Twenty-fifth anniversary homecoming services will be observed today at the First Church of the Nazarene, 1501 W. Carson.

The church has just completed a project of church improvements, including complete redecorating and upholstered pews. For the past six weeks, the congregation has worshipped outdoors in the patio while the work was being done.

Special services have been arranged, starting with a ribbon-cutting ceremony at 9:45 a.m. and a 15-minute service in the sanctuary.

Sunday School classes will

follow at 10:05. The 10:50 worship service marks the beginning of a 25th anniversary harvest time revival with other services of this emphasis to be each Sunday morning and evening, and Wednesday evening, through Dec. 3.

The homecoming service will be at 2:30 p.m. with the three former pastors participating: the Rev. W.A. Penner, the Rev. Freeman Brunson, and the Rev. Charles Little.

The day will be climaxed with an evangelistic service at 7 p.m. The Rev. Ponder W. Gilliland, pastor, says that the doors of the church are open to all who wish to share in these special services.

## Obituaries

**DONALD T. KJENSTAD**

Funeral services for 5-month-old Donald Thomas Kjenstad, son of Mr. and Mrs. Donald E. Kjenstad, 24248 Ocean Ave., will be held at the White and Day Colonial Chapel in Redondo Beach at 10 a.m. Monday with Pastor Alfred Schuetz of the Immanuel Lutheran Church officiating. The boy died in a Los Angeles hospital Friday.

Born in Torrance on June 19, 1961, the boy is survived by his parents, a brother, Timmy; a sister, Tammy; grandparents, Mr. and Mrs. Lyle Mitchell of Redondo Beach; and Mr. and Mrs. Silmer Kjenstad of Torrance.

Interment will be in Green Hills Memorial Park, San Pedro.

## Torrance Church Calendar

### SOUTH BAY BAPTIST CHURCH

4555 Shattuck Lane  
Seaside Ranchos, Torrance  
Pastor, Dr. J. C. Brumfield  
Frontier 5-3435  
Sunday School—9:30 A.M.  
Morning Worship—10:45 A.M.  
—Junior Church  
Baptist Training Fellowship—6:00 P.M.  
Evening Worship—7:00 P.M.  
WEDNESDAY  
Bible study and prayer 7:30 P.M.  
THURSDAY  
Choir rehearsal—7:30 P.M.  
Modern crib nursery and toddler care provided all stated church services.  
Sunday School transportation schedule Frontier 5-3435.

### FOURSQUARE GOSPEL CHURCH

Corner Arlington and Sepulveda  
Tel. DA 6-2072  
Rev. and Mrs. Jas. P. Lowen  
SUNDAY—Sunday school 9:30 a.m., Morning Worship 10:45 a.m.  
Group Services 6:30 p.m. (Y.P. Cadets, Defenders)  
Evangelistic 7:30 p.m.  
MIDWINTER Wednesday—Bible Study at 7:30 p.m.  
PUBLIC INVITED

### HOPE CHURCH EVANGELICAL UNITED BRETHREN

5347 W. 174th St.  
Rev. Moutad Bergesen  
PH. DA 9-3277—Res. DA 9-3542  
9:30 a.m.—Sunday School  
11:00 a.m.—Morning Worship  
6:30 p.m.—Youth Fellowship  
7:30 p.m.—Evening Worship  
Bible Study and Prayer Meeting  
Wednesday, 7:30  
Nursery care provided for the morning service.  
DA 3-1012

### FIRST BAPTIST CHURCH

at Carson & Manuel St.  
Torrance, Calif.  
Phone FA 8-5030  
Morning Office Pastor  
Robert Dehn, Asst. Pastor  
SUNDAY—5 Morning Services  
9:15 A.M.—9:45 A.M.  
Sunday School 9:15 for Nursery thru Juniors, College and Adults  
10:45—11:15—High and High School Fellowship—Training—6:15 P.M.  
Evangelistic Message—7:30 P.M.  
WEDNESDAY Bible Study 7:30 P.M.  
Communion Service and Prayer  
Nursery provided for all ages.  
also sound proof mothers' room.  
ALL WELCOME

### CALVARY COMMUNITY CHURCH OF TORRANCE

1117 Milton St., at Raymond Ave.  
Torrance  
Donald E. Flentge, Pastor  
PH. DA 4-5271  
Bible classes for all ages  
Morning Service—11 a.m.  
(Nursery service provided)  
Youth Program—5 and 6 p.m.  
Evening Service—7:30 p.m.  
Wednesday Night Bible Study and Prayer—7:30 p.m.  
Women's Missionary Society every 2nd and 4th Thursday of month

### GREYFRIARS MEMORIAL PRESBYTERIAN (Orthodox)

22511 South Figueroa, Torrance  
Worship hours 11 a.m. and 7 p.m. Every Sunday  
Sunday School at 9:45  
Young People's Fellowship 6:15  
Prayer Meeting every Wednesday Evening at 7 o'clock  
Dr. David Calderwood—Pastor  
Mr. Richard Gibson  
Supt. of Sunday School  
Mr. Will Power  
Director of Choir

### ST. ANDREW'S EPISCOPAL CHURCH

1432 Engracia, FA 8-3781  
Rev. Hugh R. Perry  
R.A. H.D. Rectory  
7:30 a.m. Holy Communion  
9:15 a.m. Family Worship Service followed by Church School and Coffee Hour  
11:00 a.m. Morning Worship (Choral Eucharist on 1st and 3rd Sundays)  
Prayer Meeting every Wednesday Evening at 7 o'clock  
Child care and Nursery provided at 9:15 and 11 a.m. services  
Weekdays: Holy Communion at 11 a.m. Thursdays and 8:30 a.m. on All Saints Days

### CHRIST THE KING LUTHERAN CHURCH

2706 W. 152nd St., Torrance  
Maynard V. Midhus, Pastor.  
Phone DAVIS 5-8221  
Res. DAVIS 9-3455  
Divine Worship, 8:30 A.M.  
Sunday School, 9:45 A.M.  
Divine Worship, 11:00 A.M.  
Nursery care provided at both services.

### ASSEMBLY OF GOD CHURCH

24404 Hawthorne Blvd.  
Walteria  
Rev. O. W. Fish, Pastor  
Frontier 5-7785  
Sunday School—9:45 a.m.  
Morning Worship—11:00 a.m.  
Children's Church—11:00 a.m.  
Evangelistic Service—7:30 p.m.  
Thurs. Prayer Meeting—7:30 p.m.  
Thurs. Young Peoples—7:30 p.m.

### SEVENTH-DAY ADVENTIST

Corner of Acacia and Sonoma  
Elder Glen L. Goffar, Pastor  
Residence—FR 5-4731  
Church Office—FA 8-1540  
Saturday—  
Sabbath School—9:30 A.M.  
Church Service—11 A.M.  
Wednesday—  
Prayer Meeting—7:30 P.M.  
Friday—  
Youth Meeting—7:30 P.M.

### ROLLING HILLS COVENANT CHURCH

2221 Palos Verdes Dr. No.  
Allen W. Wickman, Pastor  
Sunday School 9:45 a.m. Classes for all ages and interest groups.  
Morning Worship 11:00 a.m.  
Evening Service at 7:00 p.m.  
Youth groups for Junior and Senior High School Youth at 6:00 p.m. Nursery and Children's church services each Sunday.

### LUTHERAN CHURCH OF THE GOOD SHEPHERD

21100 Victor St., Torrance  
Phones: FR 4-2110 or FR 5-0931  
SUNDAY  
9:30 a.m.—Bible Study  
10:45 a.m.—Morning Worship  
10:45 a.m.—Morning Worship  
Child care during the service  
Holy Communion last Sunday each month.

### SOUTH BAY CHURCH OF GOD

17661 Yukon, Torrance  
Phone DA 9-4211 or FA 1-2674  
Pastor: Rev. Clifford L. Tierney  
Associate Pastor: Rev. Clifford L. Tierney  
Hilchuck  
9:30 a.m.—Sunday School  
11:00 a.m.—Church  
7:30 p.m.—Evening Service.  
Nursery Care Provided

### JEHOVAH'S WITNESSES Torrance Congregation

2305 Arlington Ave., Torrance  
PUBLIC LECTURE 3 P.M.  
Sunday  
Bible Study 8 P.M. Tuesday  
Theocratic Ministry School 7:30 P.M. Thursday  
SERVICE MEETING 8:30 P.M. Thursday  
Goodwill persons invited . . . Free. No Collections.  
Congregation Servant  
LEONARD E. OLLIFF  
Telephone TR 6-9224

### ST. JAMES CATHOLIC CHURCH

417 Vincent St., Redondo  
Sunday Masses: 7, 9, 10:15, 11:15 and 12:15 o'clock  
High Mass, 9 A.M.

### FIRST METHODIST CHURCH

Torrance  
Carson at El Prado  
Phone FA 8-3242  
Rev. Gilbert S. Zimmerman  
Res. Phone FA 8-6231  
Rev. Edward D. Goodell  
Res. Phone FA 8-3717  
2 Sessions of Morning Worship and church school 9 a.m. and 11 a.m. Nursery provided.  
6:30 p.m.—Methodist Youth Fellowship Meetings

### CHURCH OF CHRIST

3530 Emerald Ave., Torrance  
Duane McCampbell, Minister  
SUNDAY  
9:45 a.m.—Bible Study  
10:45 a.m.—Worship Service.  
6:00 p.m.—Young People's Meeting  
7:00 p.m.—Evening Worship  
WEDNESDAY  
10:00 a.m.—Ladies Bible Class  
7:30 p.m.—Bible Study  
Phone FR 1-8000

### FIRST CHURCH OF CHRIST, SCIENTIST

218th St. and Manuel Ave.  
Torrance, Calif.  
Church Services—11 a.m.  
Wednesday Eve Meetings—8 p.m.  
Sunday School—  
9:15 a.m. children 9 yrs to 30  
11 a.m. children under 9 years  
must be accompanied by parent or guardian for enrollment.  
Reading Room—1406 Craven  
Open 10 a.m. to 5 p.m. daily except Sunday and Holidays. Also 7 to 8 Monday and Friday evenings.  
All are welcome to attend our services and to use our Reading Room.

### CENTRAL CHURCH EVANGELICAL UNITED BRETHREN

Marcellina & Arlington  
Rev. Walter Stanton  
FA 8-3010  
9:30 — Sunday School  
11:00 — Morning Worship  
6:30 — Youth Fellowship  
7:30 — Evening Worship  
Midweek Worship Service 7:00 Wednesday Evening

### FIRST CHRISTIAN CHURCH OF TORRANCE

(Disciples of Christ)  
2920 El Dorado, Torrance  
Rev. H. Milton Sippel, Pastor  
Res. Phone FA 8-4555  
Two Sessions of Church School and Morning Worship, 9:30 and 11:00 a.m.  
Nursery provided at both sessions.  
Christian Youth Fellowship—7 p.m.

### FIRST LUTHERAN CHURCH

Carson and Flower  
Phone FAIRfax 5-5584  
William J. Roderer, Pastor  
Central Presbyterian, Torrance  
8:00 & 10:45 a.m.—Worship Service  
9:45 & 9:45 a.m.—Sunday School  
10:45 a.m.—Worship Service.  
(Nursery at 10:45 Service)  
Holy Communion—First Sunday  
Luther League—2nd and 4th Sundays.

### DEL AMO SOUTHERN BAPTIST CHURCH

317 S. Broadway, Redondo Beach  
(Permanent Location)  
226th St. & Ocean Ave.  
FR 1-3225  
Sunday School—9:45 A.M.  
Training Union—6 P.M.  
Worship Services  
11 A.M. and 7 P.M.  
Pastor, Daniel B. Weaver Jr.

### FIRST CHURCH OF THE NAZARENE

1501 West Carson  
Ponder W. Gilliland, Pastor  
PH. FA 8-4000  
9:30 A.M. Sunday School  
10:45 A.M. Worship  
Nursery  
Children's Church  
6:00 P.M. Youth Fellowship  
7:00 P.M. Evening Service  
The Happiest Hour of the Week  
7:30 P.M. Wednesday evening  
"Come Ye Apart Hour"

### REDONDO-TORRANCE CHURCH OF RELIGIOUS SCIENCE

907 Knob Hill, Redondo Beach  
Sunday Service—11 A.M.  
Children's Church—10:30 A.M. (All Ages)  
Senior Youth—7 to 9 P.M.  
Dr. Earl D. Barnum, Minister  
Church Phone FR 8-3435

### UNITY Classes

Adults and Children  
Sunday mornings 11:00 a.m.  
1610 Acacia (at Sonoma)  
UDA Church  
Torrance  
Affiliated with Unity School of Christianity  
Lee's Summit, Missouri  
Call FR 5-4230 for information

## The big attraction at the County Fair was this charming "Home of the Year"!

(of course...it features a modern gas range!)



Have you noticed how modern gas ranges have a habit of being seen in the best places? (By invitation, certainly.) It's merely a matter of choice. When smart builders and smart home buyers get together, the result is bound to be a smart kitchen. And that means gas appliances.

If you haven't yet seen the new automatic gas built-ins, treat yourself soon. Take a good look at their automatic features—including the amazing "burner with a brain," meat thermometer, and rotary barbecue. And when you're ready to buy—a new range or a new home with a built-in kitchen—make your choice a modern gas range.



**R. M. Walter, Balanced Power**  
builder of Sunset Hills says: "It's no wonder why Balanced Power homes are so popular today. It's just common-sense to want the best of both gas and electricity. Each power can do the jobs it does better, faster, cheaper. Electricity can run the lights, TV sets, and small appliances. And gas can do such important household jobs as cooking."



This Model Home at Sunset Hills is a duplicate of the Los Angeles County Fair "Home of the Year" which was selected for exhibit by the Building Contractors Association of California. Viewing hours are: weekdays 9:00 A.M. to 8:00 P.M.; weekends, 9:00 A.M. to 6:00 P.M.

