

EXTRA PAINT FREE

OF EXTRA COST



RUST INHIBITIVE PRIMER

Protects all metals. Easily brushed on. Use with Trim & Deck enamel.

\$3.00 QT. \$8.98 GAL.

EVERY 2nd CAN FREE

ROL-EZE

A premium, latex base product for ALL exterior surfaces: wood, masonry or metal. Needs priming only on new wood. Superior hiding, brilliance and durability.

\$3.00 QT. \$8.98 GAL.

EVERY 2nd CAN FREE



INTERIOR PRIMER & SEALER

An excellent product for preparing interior surfaces for any type of succeeding coat. Excellent coverage and adhesion.

\$2.00 QT. \$5.98 GAL.

EVERY 2nd CAN FREE



EXTERIOR PRIMER & UNDERCOAT

Especially designed for priming exterior wood. For excellent penetration and perfect bonding with succeeding coats.

\$5.98 GAL.

EVERY 2nd CAN FREE



SWIMMING POOL PAINT

Latex, low sheen; self-priming and no primer-sealer needed on new or re-paint.

\$3.00 QT. \$8.98 GAL.

EVERY 2nd CAN FREE



WHITEX

For cement, clay, asbestos tile roofs; semi-gloss; mildew inhibitors.

\$8.98 GAL.

EVERY 2nd CAN FREE



LIQUID GLASS VARNISH

Premium interior, exterior; clear marine grade; excellent gloss, flexibility.

\$3.00 QT. \$8.98 GAL.

EVERY 2nd CAN FREE



ACRYLIC ROL-LATEX

Washable on exterior masonry, interior walls and ceilings. No paint odor, quick drying.

\$2.25 QT. \$6.98 GAL.

EVERY 2nd CAN FREE



**BUY ONE GET ONE
FREE** OF EXTRA COST

1711 CABRILLO AVE.

Just 50 Feet South of Carson St

DOWNTOWN TORRANCE FA 0-1911

MARY CARTER PAINT CO.
MORE THAN 500 STORES COAST TO COAST

Obituaries

RAY MERKEL

Funeral services for Ray Merkel, 50, of 617 Sartori Ave., were held at the Halverson-Leavell Mortuary Chapel Friday evening with the Rev. John Penner officiating. Mr. Merkel, a knitting machine operator for a swimsuit manufacturer, died Wednesday after a short illness.

Mr. Merkel was a native of Reading, Pa., and had resided in Torrance for five months.

Surviving are his widow, Gail; three brothers, and two sisters. Interment was scheduled for Ft. Rosecrans National Cemetery in San Diego.

BESSIE MARY RAMILE

Funeral services for Mrs. Bessie Mary Ramile, 75, of 3556 Garnet, are being scheduled in Ishpeming, Mich., following her death here Nov. 1. Mrs. Ramile, a native of Michigan, had resided here for 11

years before her death.

She is survived by a son, Ellsworth Lorie, of Ishpeming; two daughters, Irene Gasper of Torrance and Gladys Asikainen of Detroit; in addition to 10 grandchildren and nine great-grandchildren.

Stone and Myers Mortuary handled local arrangements.

EULA LEWIS SMITH

Funeral services for Mrs. Eula Lewis Smith, 87, of 3117 W. Carson St., were held Tuesday afternoon in St. Andrew's Episcopal Church with the Rev. Hugh R. Percy, rector, officiating. Arrangements were han-

dled by Stone and Myers Mortuary.

Mrs. Smith, a native of Georgia, had resided here for 15 years. She is survived by a son, Ufford Smith, of Torrance; and two daughters, Florence L. Smith of Los Angeles and Fannie Smith Carpenter of Herlong, Calif.

Interment was in Inglewood Park Cemetery.

LESLIE C. BURGER

Funeral services for Leslie C. Burger, 74, were held in Redwood City last week. Mr. Burger, former safety engineer

with Columbia Steel here, had lived in the Torrance area for 23 years prior to his retirement in 1953 when he and his wife, Jane, moved to Redwood City. He died Oct. 31 in Stanford Hospital, Palo Alto.

In addition to his widow, he is survived by two daughters, Mrs. Alice Hammond, Torrance, and Mrs. Jean Haslam, Firebaugh, Calif.; three sisters, Mmes. H. T. Lintott, Grace Olson and Myrtle Sallie, all of Santa Cruz.

Mr. Burger was a member of the Elks in Redwood City. Interment was near Palo Alto.

Evangelist Ends Series

Evangelist Gerry Hardy closed his six-week series of "Truth for Today" Bible study meetings Friday before a capacity crowd with standing room only.

Hardy stated in his closing message, "Indeed the spirit of God has been present in these meetings, and especially so this evening. Ninety-eight persons made decisions to study their Bible daily and to follow God's teaching as a result of this series."

HERE'S GOOD EATING AT A LOW, LOW PRICE!



Turkeys

NEW CROP, YOUNG, CALIFORNIA GROWN, FROZEN

ECONOMY QUALITY

Excellent Flavor and Texture, Unconditionally Guaranteed to Satisfy! U.S.D.A. Inspected for Wholesomeness. Oven Ready.

HENS LB. 31¢

TOMS LB.

DELICIOUS WITH OCEAN SPRAY CRANBERRY SAUCE

Market Basket Top Quality Meats

U.S.D.A. GRADED CHOICE BEEF ONLY

STEAK

EXCESS FAT & TAILS REMOVED BEFORE WEIGHING

T-BONE LB. \$1.09

COMPARE OUR TRIM PORTERHOUSE LB. \$1.19

BONELESS TOP SIRLOIN LB. \$1.39

FRESH

FRYING CHICKEN PARTS

CALIFORNIA GROWN—MEATY

DRUM-STICKS LB. 49¢

BREASTS OR THIGHS LB. 55¢

WINGS LB. 25¢

U.S.D.A. GRADE A FRESH KING SIZE

ROASTING CHICKENS 49¢

CALIFORNIA GROWN. ROTISERIE—OVEN—BARBEQUE

HORMEL'S VALUE BRAND

SLICED BACON

1-LB. PKG. 39¢

TUREK-MECK BUTTER BEEF OR VEAL STEAKS 59¢

MARKET BASKET BULK

PORK SAUSAGE LB. 39¢

HORMEL, 1-LB. ROLL, 39¢

ARMOUR CAMPFIRE BRAND

SLICED BACON 1-LB. PKG. 59¢

HORMEL OLD SMOKEHOUSE

SLICED BACON 1-LB. PKG. 69¢

RANGE BRAND, THICK SLICED, 2-LB. PKG. \$1.29

Market Basket Delicatessen

MORRELL'S PRIDE

FRANKS 1-LB. PKG. 49¢

WISCONSIN AGED

CHEDDAR CHEESE LB. 59¢

WOLLMAN MUENSTER, CARAWAY, JACK, MILD CHEDDAR, LONGHORN

SLICED CHEESE 6-OZ. PKG. 29¢

MARKET BASKET

POTATO SALAD 16-OZ. CTN. 29¢

PREMIUM

Snowflake Crackers 1-LB. PKG. 27¢

A COMPLETE MEAL FOR DOGS

Ken-L-Ration 6 16-OZ. CANS 89¢

COOL WATER SOAP

Woolite LIQUID 8-OZ. CAN 69¢

POWDER, 1-LB. CAN, \$1.39

Market Basket Sandries

Add Sales Tax To Taxable Items.

SEAMLESS, NUDE HEEL, DEMI TOE

LURE NYLONS 79¢

YELLOW PACKAGE, REGULAR \$1.19

SMALL, MEDIUM, LARGE, 75¢ VALUE

VINYL HOUSEHOLD GLOVES 59¢

FOR KITCHEN & HOUSEHOLD. NON-SLIP SURFACE. EASY ON EASY OFF

KRAFT HEAVY BROWN PAPER

WRAPPING PAPER 39¢ VALUE

FOR PARCEL POST & EXPRESS PACKAGES. 30" WIDE, 30" LONG, WITH ADDRESS LABELS.

CAST IRON PRE-SEASONED—11 1/4" DIAMETER

GRISWOLD SKILLET \$2.19

LIFETIME GUARANTEE

POTATOES 29¢

U.S. NO. 1 RUSSET 10-LB. BAG

CELERY

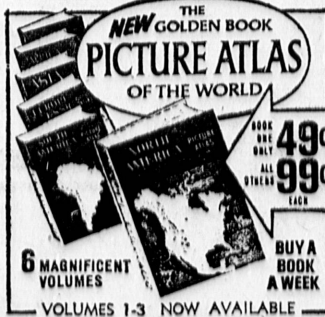
FRESH CRISP

SWEET SPANISH

ONIONS 3 lbs. 15¢

BLUE DIAMOND BRAND

ALMONDS LB. 29¢



6 MAGNIFICENT VOLUMES

VOLUMES 1-3 NOW AVAILABLE

Market Basket Bakery

DANISH VILLAGE

APPLE RING EACH 29¢

DOLLY MADISON FRENCH PASTRY, CUP CAKES, BOSTON PIE, JELLY PUFFS

LUNCH BOX

ITEMS 3 PKGS. 39¢

YOUR CHOICE

Market Basket



1401 S. Hawthorne Blvd. 129 Lomita Ave. at Main
REDONDO BEACH WILMINGTON
Next to Zody's Department Store



OPEN VETERANS' DAY Saturday, November 11th

PRICES EFFECTIVE THURSDAY THROUGH SUNDAY, NOV. 9-12

CHASE & SANBORN

COFFEE 1-LB. CAN 59¢

PRICE INCLUDES 7¢ OFF

PACIFIC HONEY TREAT

Graham Crackers 1-LB. PKG. 29¢

PRICE INCLUDES 6¢ OFF

Fluffo 3-LB. CAN 69¢

MARKET BASKET 100% PURE VEGETABLE OIL

MARGARINE

APPLE TIME

APPLESAUCE

BEST FOODS REALLY FRESH

MAYONNAISE

CANTEN CUT

GREEN BEANS

CAL PAME PINEAPPLE-GRAPEFRUIT, PINEAPPLE-ORANGE, ORANGE—YOUR CHOICE

FRUIT DRINKS 3 46-OZ. CANS 69¢

JERSEYMAID

CATERING ICE CREAM 1/2-GAL. CTN. 59¢

HUNT'S

TOMATO SAUCE 6 8-OZ. CANS 45¢

BEECH-NUT STRAINED

FRUITS & VEGETABLES

Baby Food 3 4 1/2-OZ. JARS 29¢

JUNIOR, 7 1/2-OZ. JARS, 2 FOR 25¢

NORTHERN

Toilet Tissue 4 ROLL PKG. 29¢

PRICE INCLUDES 4¢ OFF

LIQUID DETERGENT

Joy PRICE INCLUDES 7¢ OFF 49¢

22-OZ. CAN

DETERGENT IN TABLET FORM

Salvo GT. PKG. 73¢

HEINZ TOMATO SOUP

10 10 1/2-OZ. CANS \$1.00

HEINZ BEAN AND HAM, VEGETABLE, VEGETARIAN, CREAM OF PEA, CELERY, TOMATO RICE.

SOUPS 2 10 1/2-OZ. CANS 25¢

ALL OTHER

Heinz Soups 2 10 1/2-OZ. CANS 31¢

PRICE INCLUDES 6¢ OFF

PILLSBURY

Brownie Mix DEAL OF 2 16-OZ. PKGS. 59¢

FRENCH'S

Spaghetti Sauce Mix PKG. OF 2 39¢

GOLD MEDAL

Spaghetti 1-LB. PKG. 19¢ 2-LB. PKG. 35¢

Market Basket Frozen Foods

SARA LEE

CAKES EACH 69¢

COFFEE CAKE, CHOCOLATE CAKE, BANANA CAKE, APPLE SPICE CAKE, LARGE 19-OZ. CHEESE CAKE, BROWNIES

ROSARITA

BEEF TACOS PKG. 39¢

BEEF ENCHILADA OR MEXICAN DINNER YOUR CHOICE EACH 49¢

COMBINATION PLATE EACH 39¢

ORE-IDA

HASH BROWN 2-LB. BAG 25¢

POTATOES