

## Construction Started for New Eastern Industries Facilities

Construction of a new manufacturing and headquarters building for the Eastern Industries Division, Laboratory for Electronics, here was started Friday with symbolic groundbreaking attended by public officials and company representatives.

The new facility, to be located on Lomita Boulevard east of Vickers, Inc., will contain 20,000 square feet and will provide employment for nearly 50 persons when it opens early next year.

ATTENDING groundbreaking ceremonies Friday were city officials including Mayor Albert Isen and Councilman George Vico; Harold Frenz,

president of the Chamber of Commerce; Don Reining, Chamber manager; and Betty Baker of the Chamber.

Company officials at the ceremony included Jim Rea, division manager; Norman Praigg, manager of marketing; Robert E. Schmidt, assistant district sales manager; and W. E. DeYoung, district manager.

THE FIRST building will be part of a complex which is planned for the 10-acre site. Rea said. The manufacture of traffic control equipment and development of hydraulic and thermodynamic devices for military equipment is planned as the first activity in the new facility.

The western headquarters of the firm will be located in the plant and sales and service headquarters for both civilian and military equipment handled by the firm will be located here, Rea said.

MANUFACTURING is presently located in plants in Boston and Newton, Mass. California facilities are now located in Monterey and Westchester. The building is being constructed by Haskell E. Shaw



INDUSTRY STARTED... Checking to make certain they are started right at groundbreaking ceremonies for the new Eastern Industries building here are (from left) Betty Baker of the Chamber of Commerce, Mayor Albert Isen, and Jim Rea, manager of the Eastern Industries Division, Laboratory for Electronics. The building is scheduled to be completed in February. (Herald Photo)



TRAFFIC SMOOTHERS... Crews install traffic control signals at Arlington and Jaz Del Amo, one of more than a dozen major Torrance intersections getting modern signal installations as the result of a City Council program adopted last summer. When completed, the program will eliminate the hazardous single unit, center signals which have been used for several years in the city. (Herald Photo)

ton and Newton, Mass. California facilities are now located in Monterey and Westchester. The building is being constructed by Haskell E. Shaw

**Halloween "SPIRIT" Specials**

FIVE BROTHERS KENTUCKY 5th \$4.49

ANDERSON CLUB KENT 5th \$4.20

90 PROOF - SOUR MUSH - CHARCOAL FILTERED

GLENLOGIE SCOTCH IMPORTED 5th \$5.19

KIROV VODKA, BOYAR GIN 5th \$2.98

CHAMPAGNES 5th from \$1.99

WE HONOR: BANKAMERICARD-INTERNATIONAL  
CHARGE AMERICAN EXPRESS  
CREDIT CARDS

**Franks Liquor Store**

1601 Cabrillo at Gramercy FA 8-2591  
DOWNTOWN TORRANCE



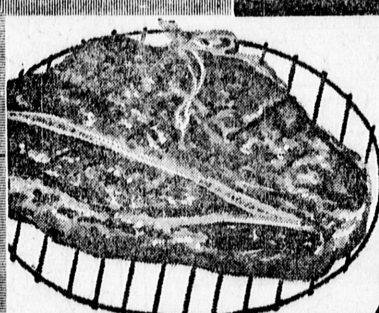
HERE'S THE *TREAT* THAT  
CAN DO THE *TRICK!*

Yes... your filled S&H GREEN STAMP books bring you the best, by far, of wonderful treats! No other stamp plan offers as many, fine nationally advertised gifts. They're no trick to save... at your friendly Fox Market.



Prices valid Monday thru Wednesday, Oct. 30, 31; Nov. 1, 1961

tender delicious MEATS



Delicious barbecue treat for the crowd... easy on the budget, too! At its best with Adolph's.

U.S.D.A. CHOICE STEER BEEF

**CHUCK STEAK**

**45¢ lb.**

MIDWEST YOUNG PORK  
**SPARE RIBS**

Light, meaty small sides!

**49¢ lb.**

3 lbs. or less

**Ground Beef**

FRESH, LEAN, TASTY  
Made several times daily as required.

**39¢ lb.**

**Roasting Chicken**

FRESH USDA GRADE A  
Grown at California's famed Lancaster Farms.  
4-5 lbs. avg.

**49¢ lb.**

**Sliced Bacon**

RATH BLACK HAWK  
Sweet smoked.  
First quality bacon.

**69¢ lb.**

Feiler's Frozen  
**SANDWICH BEEF PATTIES**

Tender!  
Juicy!  
2-OZ. PKG.

**5¢**



ARROWHEAD  
**SOFT DRINKS**

All popular flavors!  
HALF GALLON JUG

**4 for \$1**

**SNOWDRIFT**  
ALL-VEGETABLE SHORTENING

Made by Wesson Oil



**3-LB. CAN**

Price includes 10¢ Off

**59¢**

dew fresh PRODUCE

**BANANAS**  
2 lbs. **25¢**

Golden ripe Central American.

Sweet, golden, dehydrated, California desert  
**Zahiti Dates**  
1 1/2-lb. CELLO BAG **39¢**

**OCEAN SPRAY FRESH CRANBERRIES**  
1-POUND BAG **19¢**

Mountain Gold  
**SLICED AMERICAN CHEESE**

Individually wrapped slices

**49¢**



TORRANCE  
182nd & Arlington  
DA 3-7065

TORRANCE  
20900 Hawthorne  
FR 1-5541

GARDENA  
Van Ness & Rosecrans  
DA 3-1767

ALL STORES STOCK ON 1-10

**WHERE EARNINGS ON INSURED SAVINGS ARE HIGH**

**4 1/2%** plus 1/4 of 1% extra dividend paid on savings for the quarter ending Sept. 30, 1961

Paid Quarterly



**Southwest Savings AND LOAN ASSOCIATION**

INGLEWOOD: 2700 W. Manchester (at 6th Ave.)—PL 3-2164  
TORRANCE: 1603 Cravens (at Marcelina)—FA 8-6111  
Mon. thru Thurs.: 9:30 a.m. to 4 p.m.; Fri. to 6:00 p.m.

SW-39