

# LOWEEN TARTS VINGS Chef HIP STAMPS



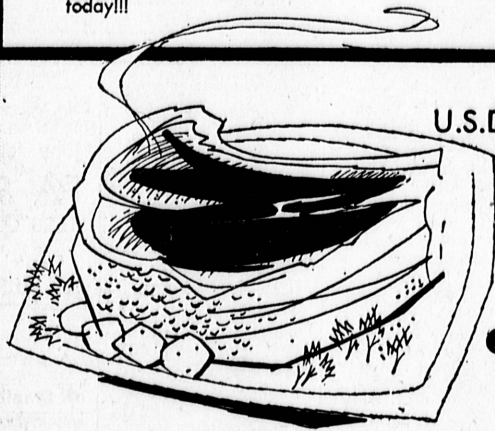
MAGIC  
CHEF  
CINNAMONY  
BAKERY



Our bakery specializes in home-made goodies for you. Each cake, bread, roll, pie and cookie tastes like you've spent the day in your kitchen. Try a loaf of bread or a fresh pie—today!!!

PRE-HOLIDAY BAKERY TREATS  
**PUMPKIN or MINCE PIES** Deep 8" Pies Regular 69c **59c**  
**HOMEMADE POTATO BREAD** 1½ Pound Loaf Regularly 39c **33c**

Best Flavor from Your Food!  
**HEINZ KETCHUP**  
**19c**  
OZ. TITLE



U.S.D.A. GOVERNMENT GRADE "CHOICE"

**RIB ROAST**

CENTER CUT

**69c/lb**

U.S.D.A. CHOICE STEAK SALE

Your mouth will water as they sizzle on your barbecue! Serve with baked potato and salad.

**CHOICE RIB STEAKS** **79c/lb.**

These are the epitomy of the steak family! Serve with mushrooms or onions.

**CHOICE CLUB STEAKS** **98c/lb.**

Broil these!! Serve with fresh vegetables and salad made with vinegar dressing.

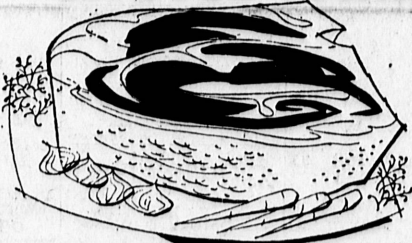
**CHOICE CHUCK STEAKS** **59c/lb.**

These Swiss Steaks will melt in your mouth. Serve with noodles or rice and green vegetable.

**CHOICE SWISS STEAK** ROUND BONE **69c/lb.**

Try these on your spit! Fix a marinade and baste occasionally while spit is turning.

**CHOICE FAMILY STEAKS** BONELESS **79c/lb.**



DOWNY FLAKE  
**FROZEN WAFFLES**

Regular Package **10c**

DESSERT TREAT ASSORTED  
**ROYAL GELATIN**

3 Regular Packages **19c**

LIBBY

**CORNERED BEEF HASH**  
16-Ounce Can **39c**

GORTON'S  
**FRIED FISHSTICKS**  
2 8-ounce Packages **69c**

HORMEL'S  
**SLICED BACON**  
**69c/lb.**

U.S.D.A. GOVERNMENT GRADE "CHOICE" OVEN READY

**CHUCK or SEVEN BONE ROASTS** **45c/lb.**

These savory flavored turkeys have been smoked slowly in Hickory ovens for 12 hours or more, making them truly a gourmet's delight. Just slice and serve.

**SMOKED TURKEY**

USDA GRADE "A" YOUNG HEN  
SEVEN POUND MINIMUM WEIGHT **\$5.95 EACH**

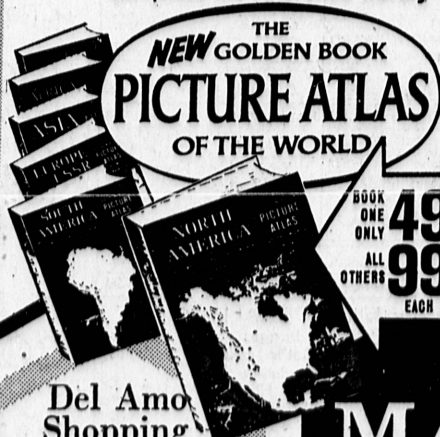
GROUND FRESH EVERY HOUR!

**GROUND BEEF** **49c/lb.**  
**GROUND CHUCK** **59c/lb.**  
**GROUND ROUND** **69c/lb.**

FRESH FROZEN  
**BROOK TROUT**  
**79c/lb.**

FRESH FILLET  
**DOVER SOLE**  
**69c/lb.**

HELP YOUR CHILD IN SCHOOL  
complete his reference library



THE NEW GOLDEN BOOK  
**PICTURE ATLAS**  
OF THE WORLD

BOOK ONE ONLY **49c**  
ALL OTHERS **99c**  
EACH



MAGIC  
CHEF  
GOURMET  
GALLERY

RUBEN'S ALL BEEF  
**SALAMI**

Reg. 89c/lb. **69c/lb.**

Regular 45c/lb.

**Kosher Dill Pickles** **35c/lb.**

Del Amo  
Shopping  
Center  
Corner of  
Hawthorne &  
Sepulveda

**MAGIC  
CHEF**



NONE  
SOLD TO  
DEALERS

OCTOBER 26, 1961

THE TORRANCE HERALD

# STAR GAZER

By CLAY R. POLLAN

Your Daily Activity Guide  
According to the Stars.

To develop message for Thursday,  
read words corresponding to numbers  
of your Zodiac birth sign.

**ARIES**  
MAR. 21-20  
25-30-52-57  
59-65-72

**TAURUS**  
APR. 21-20  
MAY 21-20  
1-8-9-10  
11-46-62

**GEMINI**  
MAY 22-21  
JUNE 22-21  
18-32-48-65  
69-75-79-81

**CANCER**  
JUNE 23-22  
JULY 23-22  
19-27-35-47  
44-60-83-89

**LEO**  
JULY 24-23  
AUG. 23-22  
16-17-36-40  
49-55-67

**VIRGO**  
AUG. 24-23  
SEPT. 23-22  
24-29-37-43  
64-74-84-88

- 1 Keep
- 2 Events
- 3 Trips
- 4 News
- 5 Romantic
- 6 Dates
- 7 Partners
- 8 Secrets
- 9 Da
- 10 Not
- 11 And
- 12 Act
- 13 Plan
- 14 May
- 16 Better
- 17 Be
- 18 Today
- 19 Certain
- 20 Your
- 21 Important
- 22 Curtail
- 23 Project
- 24 Let
- 25 You
- 26 Could
- 27 Contacts
- 28 Financial
- 29 Your
- 30 Your
- 31 Be
- 32 Emphasizes
- 33 Your
- 34 Ask's
- 35 Made
- 36 Deliberate
- 37 Of
- 38 Reach
- 39 Launched
- 40 In
- 41 Aired
- 42 Moves
- 43 And
- 44 Freedom
- 45 Good
- 46 Your
- 47 Today
- 48 Surprize
- 49 Your
- 50 Human
- 51 Contact
- 52 A
- 53 See
- 54 May
- 55 Money
- 56 Adv'sible
- 57 Peak
- 58 Financie
- 59 New
- 60 Help
- 61 At
- 62 Assets
- 63 Operation
- 64 Note
- 65 In
- 66 Poss
- 67 Transactions
- 68 Social
- 69 Conings
- 70 Deal
- 71 Popularity
- 72 And
- 73 And
- 74 Plans
- 75 And
- 76 Keep
- 77 Thoroughly
- 78 Your
- 79 New
- 80 With
- 81 Contacts
- 82 Good
- 83 A
- 84 Corner
- 85 The
- 86 Success
- 87 Top
- 88 Wise
- 89 Financie
- 90 Human
- 91 Neutral

Good Advice Neutral

**LIBRA**  
SEPT. 23-22  
OCT. 23-22  
1-11-19-20  
21-29-30-31  
32-39-40-41  
42-49-50-51  
52-59-60-61  
62-69-70-71  
72-79-80-81  
82-89-90-91  
92-99-100-101  
102-109-110-111  
112-119-120-121  
122-129-130-131  
132-139-140-141  
142-149-150-151  
152-159-160-161  
162-169-170-171  
172-179-180-181  
182-189-190-191  
192-199-200-201  
202-209-210-211  
212-219-220-221  
222-229-230-231  
232-239-240-241  
242-249-250-251  
252-259-260-261  
262-269-270-271  
272-279-280-281  
282-289-290-291  
292-299-300-301  
302-309-310-311  
312-319-320-321  
322-329-330-331  
332-339-340-341  
342-349-350-351  
352-359-360-361  
362-369-370-371  
372-379-380-381  
382-389-390-391  
392-399-400-401  
402-409-410-411  
412-419-420-421  
422-429-430-431  
432-439-440-441  
442-449-450-451  
452-459-460-461  
462-469-470-471  
472-479-480-481  
482-489-490-491  
492-499-500-501  
502-509-510-511  
512-519-520-521  
522-529-530-531  
532-539-540-541  
542-549-550-551  
552-559-560-561  
562-569-570-571  
572-579-580-581  
582-589-590-591  
592-599-600-601  
602-609-610-611  
612-619-620-621  
622-629-630-631  
632-639-640-641  
642-649-650-651  
652-659-660-661  
662-669-670-671  
672-679-680-681  
682-689-690-691  
692-699-700-701  
702-709-710-711  
712-719-720-721  
722-729-730-731  
732-739-740-741  
742-749-750-751  
752-759-760-761  
762-769-770-771  
772-779-780-781  
782-789-790-791  
792-799-800-801  
802-809-810-811  
812-819-820-821  
822-829-830-831  
832-839-840-841  
842-849-850-851  
852-859-860-861  
862-869-870-871  
872-879-880-881  
882-889-890-891  
892-899-900-901  
902-909-910-911  
912-919-920-921  
922-929-930-931  
932-939-940-941  
942-949-950-951  
952-959-960-961  
962-969-970-971  
972-979-980-981  
982-989-990-991  
992-999-1000-1001

**SCORPIO**  
OCT. 24-23  
NOV. 23-22  
41-50-66-71  
76-82-90

**SAGITTARIUS**  
NOV. 23-22  
DEC. 22-21  
14-20-22-42  
70-73-77

**CAPRICORN**  
DEC. 23-22  
JAN. 20-19  
2-15-22-33  
44-51-63

**AQUARIUS**  
JAN. 21-20  
FEB. 19-18  
12-21-23-26  
31-39-80-86

**PISCES**  
FEB. 20-19  
MAR. 21-20  
30-34-45-53  
58-61-85-87

## Community Relations Wins Trophy for Local Gas Co.

The Southern California Gas Co. has been awarded first place in the community relations category of public relations achievement during national American Gas Assn. competition, according to an announcement made yesterday by Georg Babbe, manager of the utility's southwest division.

The fifth annual competition, held in Dallas, at the 43rd annual meeting of the AGA, included awards in eight public relations categories, Babbe said. Gas company Vice President F. M. Foster received the trophy on behalf of the Southern California Gas Co.

"BASIS FOR THE award," Babbe said, "was our pipeline tours program for community representatives in the areas served by our company. The tours offer a better understanding of some of the problems we encounter in bringing in sufficient supplies of out-of-state gas to keep pace with the tremendous growth in the Southland."

Directing the overall tours program is F. C. Sullivan, director of public relations for the utility. Guests for the tours have been composed principally of civic officials, business leaders, educators, and representatives of the various news media.

THE PROGRAM also gives us a good opportunity to illustrate the magnitude of the investment involved," Babbe pointed out, "as well as some of the engineering achievements."

The Southern California Gas Co. has been accorded national recognition five times during the five years in which the AGA competition has been held.

## Civic Theater To Open Search For Talent Here

Saturday evening will mark the opening night for the Bay Cities Civic Theater Assn. theater, at 142½ N. Catalina Ave., Redondo Beach. The curtain will open at 8 p.m. on the first of a series of 10 "Search For Talent" contests sponsored by the association, and these contests will run every Saturday night at 8 for the next 10 weeks, with the winners of each weekly contest appearing on the final show of the season in competition for prize money.

AT EACH of the Saturday night shows the public is welcome, and donations are \$1 per person. All proceeds from these shows will be donated to the Garden Valley Retarded School in Gardena.

Winners of these contests will be chosen by a panel of three judges on the basis of applause, personality, poise, and originality. All decisions of the judges will be final.

AUDITIONS FOR these contests will be held, for the duration of the 10 weeks, each Thursday evening at 7:30 p.m., and Sunday afternoons at 2 p.m. at the theater. Charles Rothlein, director of the theater association, will be on hand at each audition to notify performers which Saturday night to appear. Previous auditions have been well attended by performers of all ages and types of talent, but many more acts are needed for the upcoming shows.

For further information regarding auditions or shows, please contact Rothlein at FR 6-8395, or Edwin Cook, president of the association, at FR 6-1483.

## Agent Returns After Technical Study Tour

Richard E. Patterson, claim representative for State Farm Mutual Automobile Insurance Co. at 3810 Pacific Coast Hwy., has returned after completing three weeks of technical study at his firm's home office at Bloomington, Ill.

State Farm maintains the school on a year-round basis so representatives may be informed of the latest methods, policy contracts and procedures in claim servicing. This year some 600 men will attend classes there.

## Demonstrators AT TREMENDOUS DISCOUNTS

FOR EXAMPLE:

1961 CHEVROLET

**IMPALA SPORTS SEDAN**

Loaded with turboglide, radio, heater, power steering, power brakes, EZ eye glass, white walls, 250 h.p. engine, padded dash and loads of other convenient little extras.

ONLY **\$2749<sup>00</sup>**

10 MODELS TO CHOOSE FROM, SPORTS COUPES, SPORT SEDANS, 2 DOOR SEDANS, 4 DOOR SEDANS, AND CORVARS AT TREMENDOUS SAVINGS.

**PAUL'S  
CHEVROLET**

1640 Cabrillo Ave.

FA 8-1640