



PLAZA QUALITY WHOLESALE MEATS

2507 Pacific Coast Hwy., Rolling Hills Plaza, Torr.

Sunday thru Wednesday 9 a.m. to 6 p.m.; Thursday, Friday, Saturday, 9 a.m. to 9:30 p.m.—DA 5-2782

PERSONALLY SELECTED STEER BEEF and EASTERN PORK

**PORK
CHOPS**
END CUT

39 ^c/_{lb}

OUR OWN
PURE PORK
SAUSAGE **29** ^c/_{lb}

Extra Lean, Oven Ready

RUMP ROAST

Expertly trimmed for minimum waste. Tops for Flavor & wholesome Nutrition.

Lowest Price in Southern California For This Quality

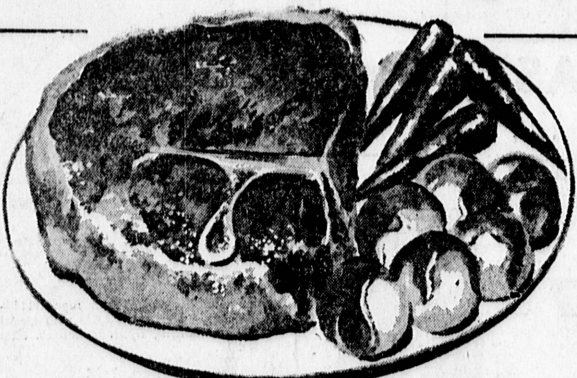
69 ^c/_{lb}

BONELESS CLOD RUMP

TOP ROUND or SIRLOIN TIP

ROLLED ROAST

79 ^c/_{lb}



CENTER CUT

**CHUCK
ROAST**

7-BONE or 0-BONE

45 ^c/_{lb}

CHUCK
STEAK
39 ^c/_{lb}

NONE HIGHER

GROUND
Round Steak
59 ^c/_{lb}

NEW!

Arden

Hi-Energy
MILK

25% MORE
PROTEIN*

You can taste
the
difference

*Than Required by
California Milk Standards

1/2-Gal **49** ^c

ALL MEAT
Franks or
Bologna **39** ^c/_{lb}

Extra Lean, Tails Removed

**T-BONE
STEAKS**

Always the Best for Flavor, Table-trimmed

**PORTERH'SE
STEAKS**

BONELESS Lean All Meat. No Waste

**TOP SIRLOIN
STEAKS**

89 ^c/_{lb}

98 ^c/_{lb}

\$1.29 ^c/_{lb}

Fillet **\$1.49**
Mignon

EXTRA LEAN -- NONE BETTER

**GROUND
BEEF** **3** ^c/_{lb}

GROUND
FRESH
HOURLY

**BONELESS LEAN
BEEF STEW**

59 ^c/_{lb}

**ROUND
STEAK**

69 ^c/_{lb}

OUR OWN
SMOKED
PICNICS

33 ^c/_{lb}

4 LEGGED
FRYING
CHICKENS

39 ^c/_{lb}

EXTRA, LEAN
CUBE
STEAK

79 ^c/_{lb}

BABY BEEF

LIVER 39 ^c/_{lb}