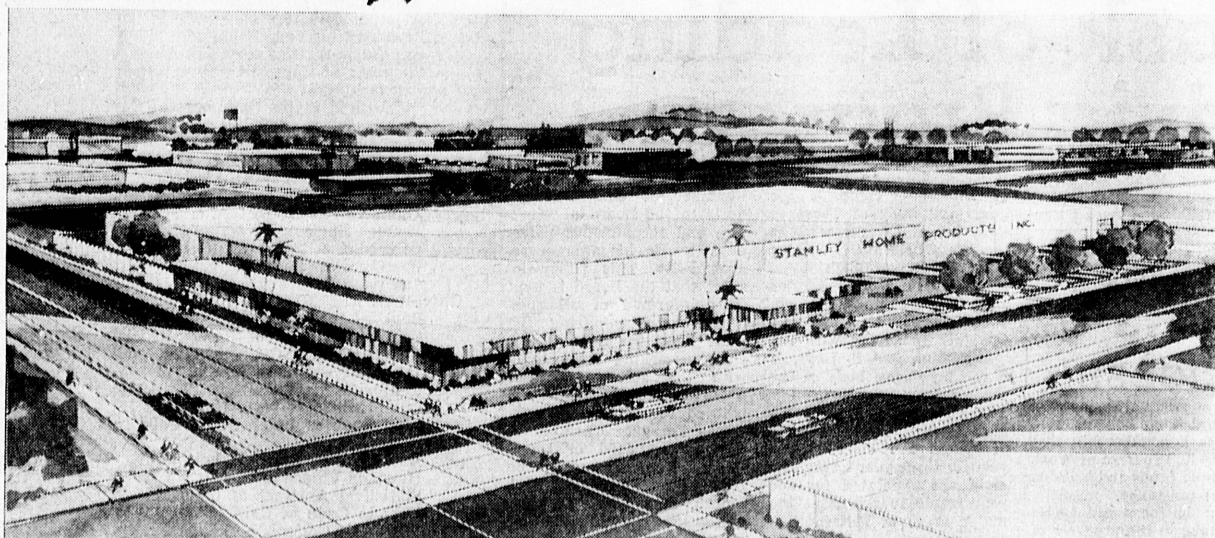


Building for Tomorrow

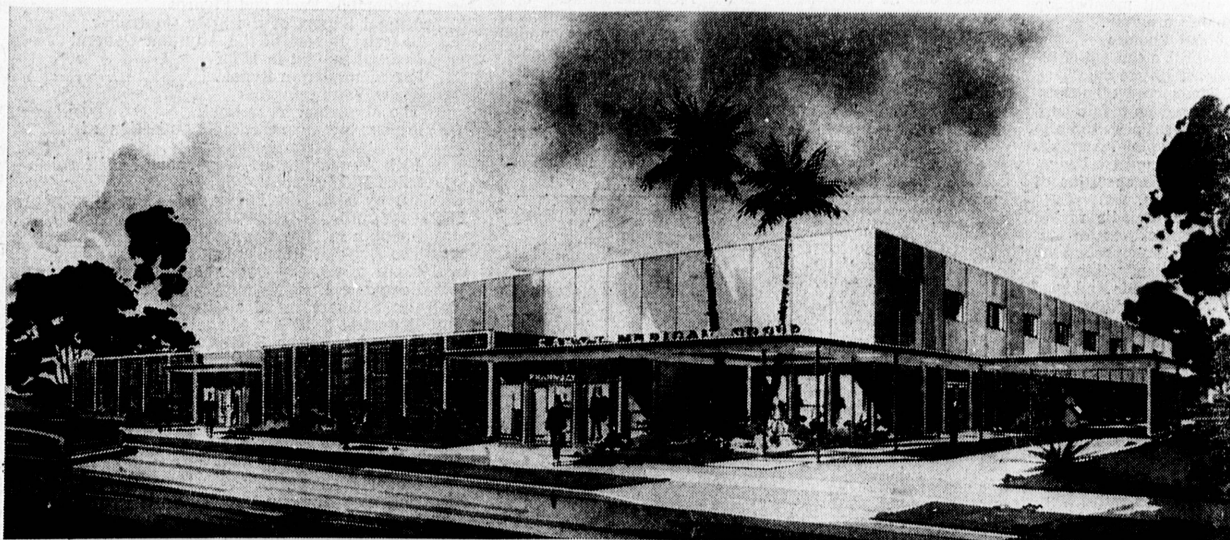
15—CHAMBER OF COMMERCE REPORT, OCTOBER 1961



NEW INDUSTRIAL BUILDING SCHEDULED

A new Torrance home for Stanley Home Products will be constructed in the near future at the southeast corner of Maple and California in the Central Manufacturing District north of the Civic Center. The plant, de-

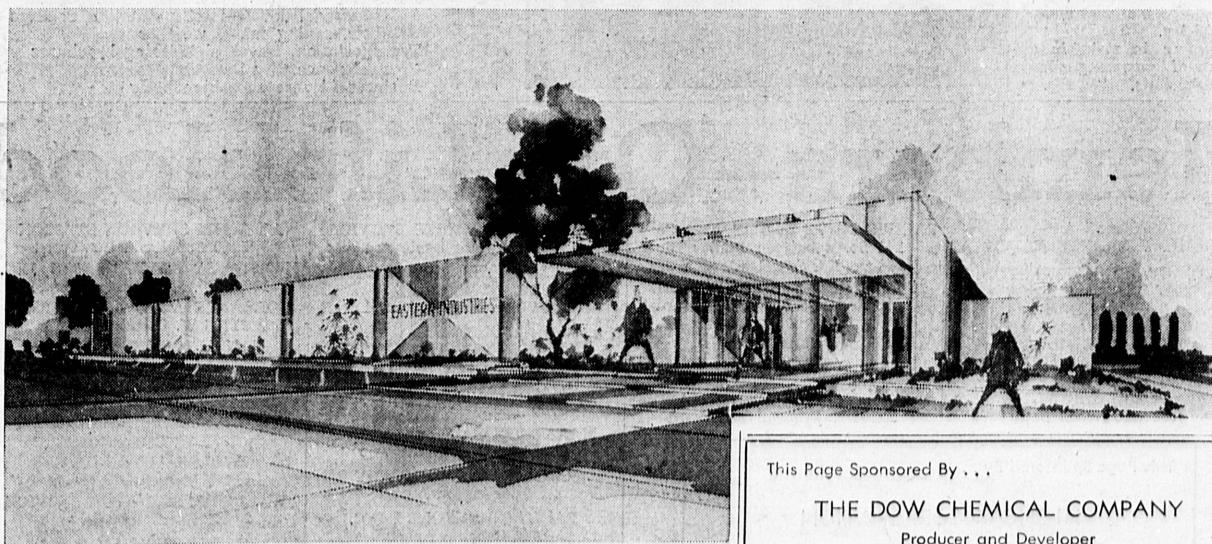
signed by Stiles and Robert Clements, will contain 55,080 square feet and is of tilt-up construction.



MEDICAL CENTER

Ground was broken in September at 3661 Torrance Blvd. for the new custom designed, two-story medical building for the Cabot Medical Group. The half-a-million dollar structure will contain complete diagnostic and

treatment facilities, pharmacy, and offices for more than 12 specialists. It is being built by George O. Shecter for the medical group.



EASTERN INDUSTRIES PLAN BUILDING

New facilities for Eastern Industries will be constructed on Lomita Boulevard near the Torrance Municipal Airport to provide manufacturing space for the new Torrance industry.

This Page Sponsored By . . .

THE DOW CHEMICAL COMPANY

Producer and Developer
of plastics for the growing west.

305 Crenshaw Blvd.

Torrance.