

Community Planning Stressed

Master Planning Chamber Project

Purpose: Cooperate with the city Planning Commission, city government, and other groups for the development of a comprehensive Master Plan which will set forth proper land use to meet the needs of our expanding city and assure orderly growth and sound economic stability.

- Assist in promoting better understanding among individuals and groups concerning the need for better planning, effective zoning, and annexation.

- Establish a project committee to work toward the development of the Civic Center and the construction of a city auditorium to provide facilities for community meetings and cultural activities.

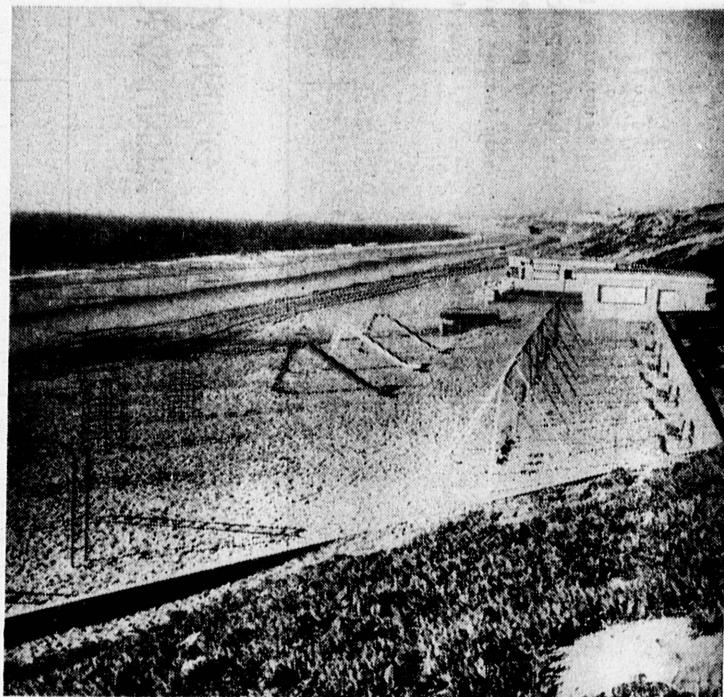
- Advocate and carry out short and long-range comprehensive plans for highway

improvement in the Torrance metropolitan area in cooperation with local, county, and state governmental units and other interested groups to the end that actual construction of highway projects are started as soon as possible.

- Encourage the development of urban renewal programs to modernize businesses and industrial properties and rehabilitate residential areas.

- Carry out, in cooperation with related governmental agencies, the Airport Master Plan, a program of executive airport facilities and services that will accommodate present needs and provide adequately for future area aviation requirements.

- Publicize and encourage adequate park and recreation facilities for our growing community.



RECREATION—FOR COMMUNITY'S LEISURE

Occupying the leisure time of the city's residents is a major concern of the Chamber of Commerce and Recreation Commission whose concern is shared by the Chamber of Commerce. Here, on a quiet afternoon, is the city's beach facilities—just one of the many recreation facilities provided throughout the city for its citizens.



DEVELOPMENT OF COMMERCE
Through its efforts on behalf of a master zoning plan and for the proper placement of commercial zoning, the Chamber of Commerce plays an important role in the development of such area shopping centers as the Southwood Center at Sepulveda Boulevard and Palos Verdes Boulevard. The Chamber works with the Planning Commission and other agencies in these programs.

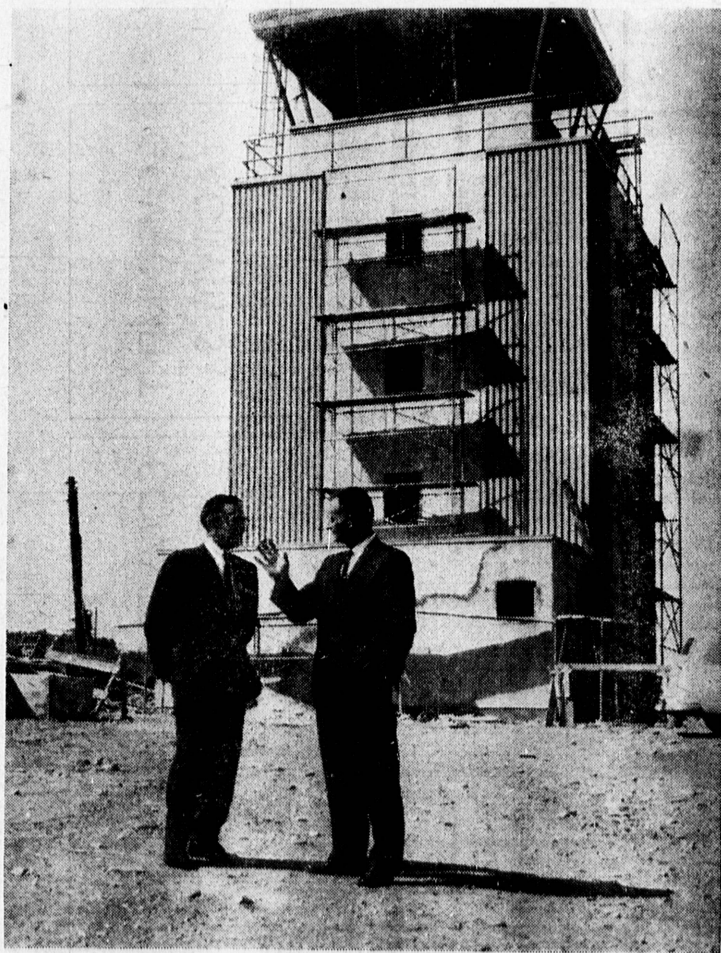
This Page Sponsored By . . .

Southwest Savings & Loan Assn.
1603 Cravens — Torrance

MAIN OFFICE

2700 W. 10th St.

Inglewood



PLANNING AIRPORT FOR FUTURE

Airport Commission President Joe Doss (left) discusses expansion plans for Torrance Municipal Airport with Manager Jack Egan. In the background is the new control tower being constructed with city and federal funds which will be operated by the Federal Aviation Agency when completed late this year. Other improvements are being studied for future expansion of the airport.