

Harvey Completes Purchase Of Michigan Aluminum Firm

The Federal Government has completed sale of a former defense plant in Adrian, Mich. — a surplus labor area — to a corporation who plans to put the huge plant back into production.

Final papers were signed in Washington turning over the former government-owned aluminum extrusion plant, formerly known as Air Force Plant No. 60, to Harvey Aluminum of Torrance.

The sale climaxed intense effort by the government, undertaken at the direction of President Kennedy and the Secretary of Labor, to find a

user-buyer for the idle industrial property.

THE FINAL PAPERS consummating the sale were signed by Administrator John L. Moore of the General Services Administration, the government property management agency, and Vice President S. K. Linden of Harvey Aluminum.

Witnessing the signing were Senator Pat McNamara of Michigan and William B. Welsh, administrative assistant of Senator Philip A. Hart of Michigan, who was out of the

country on government business.

A JOINT STATEMENT from the Michigan Senators said: "Completion of this sale of the Adrian plant is firm evidence that the entire administration under President Kennedy's leadership is putting idle resources to work. The accomplishment means that a new industrial capacity is brought to Michigan. It means new jobs in a seriously depressed area. We want to express Michigan's thanks to the President and General Services

Administration officers. We welcome Harvey Aluminum to Michigan."

The negotiated sale price was \$3,626,100, or \$100,000 higher than the highest bid that had been received for the facility.

AT THE SIGNING of the final papers, Linden turned over to Moore a check for \$675,200 which is in addition to a previously paid \$50,000 down payment. The balance will be paid under a 10-year mortgage.

Moore said "The General

Services Administration is very pleased to make this sale, not only because a good price was obtained for the government, but also because a user-buyer is the purchaser."

Linden said, "It is Harvey's intention to develop this facility to its greatest potential." He said his company is making an engineering survey toward refurbishing the plant and an economic survey to determine which lines of production will be most feasible.

The plant includes 73 acres of land with eight industrial buildings providing some 820,000 square feet of floor area.

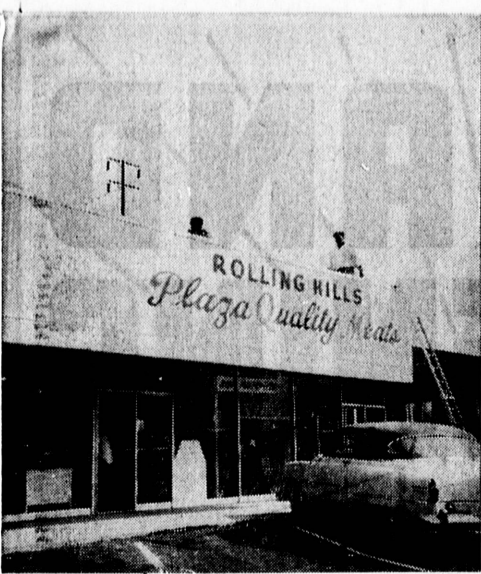
Talent Hunt

Bay Cities Civic Theatre Assn.'s "Search for Talent" starts Saturday, Oct. 28, with 10 weekly talent contests.

Weekly winners will receive a prize and the opportunity to compete in the finals. Prize money will be awarded to the first, second and third place winners in the finals.

Contestants will be separated into four age groups, 12 years and under, 13 through 18, 19 and older and senior citizens.

Information on the "Search for Talent" may be obtained by contacting Charles Rothlein at FR 6-8395 or Edwin Cook at FR 6-1483.



GRAND OPENING . . . Plaza Quality Meats opens today in Rolling Hills Plaza at Pacific Coast Highway and Crenshaw Boulevard. Owners John Parker, Gordon Bailey, and Andy Anderson have been in the meat business for 35 years. (Herald Photo)

Know Your Traffic Laws

Prepared in Cooperation With the Torrance Police Department

Traffic Box Score (As of August 1)*

Fatalities	6
Injury Accidents	275
Persons Injured	389
Non-Injury Accidents	384

*Box score of all accidents investigated by Torrance Police Department since Jan. 1, 1961

Over the past few weeks there have been several cases where drivers have committed some type of traffic violation, and as the police unit attempts to stop same, the driver, for varied reasons decides to evade arrest by trying to outrun the police unit.

This results in a wild chase and at times attaining speed in excess of 100 mph, not to mention the numerous lives that are endangered by this type of action.

Our city streets are not designed for this type of driving. Thus far no innocent people have been killed due to this disregard for our traffic laws. This certainly doesn't mean that it can't or won't happen.

Chief Percy Bennett of the Torrance Police Dept. when asked how he felt about the rise in this type of violation, had this to say:

"I wish I knew what causes some of our drivers to panic and in doing so compound the wrong they have already committed. At times I feel some of our younger drivers feel they have a superior car to that being driven by the police and feel they can outrun our police units."

"MY OFFICERS have all been trained in pursuit driving and are much better drivers than those running and as for our police units they are all capable of speed well in excess of 100 mph. Based on this and for the benefit of those who may be interested, in the last five years better than 95 per cent of all those who elect to evade arrest by trying to outrun the police have been apprehended. My men have orders that when a violator elects to evade arrest they are to apprehend this violator and not to back down because of the speed involved.

"Certainly public safety is always an issue; however, this type of driver must be apprehended before he kills innocent people; this is where the pursuit type driving my officers receive is most valuable.

"They can drive fast but maintain control of their units at all times and again are trained to look for hazards and anticipate the every action of the party running. My advice to anyone attempting such a foolhardy thing would be simply, DON'T. You will be apprehended."

JUDGE DONALD ARMSTRONG of the Torrance Branch of South Bay Municipal Court, was asked how he felt about this type violator. Judge Armstrong said, "I'm not sure I know the answer as to why a violator would run from the police other than panic or an outright disregard for our laws. In my court everyone has the right to disagree with the officer and is given the opportunity to be heard and deny any charges placed against them. I, at all times, keep an open mind and reach a verdict only after hearing all sides concerned and if the officer cannot convince me that a violation was committed I have to give the benefit of the doubt

to the violator. These things are established by law.

"When it comes to a citizen evading arrest by running and failing to yield to the red lights and siren of a police unit this is an act I cannot tolerate nor will I, very recently sentenced one such person to six months in the county jail and will continue to deal with this type of violator in a stern manner. There is no excuse for anyone running from the police and anyone that does so will be dealt with severely in my court."

IT IS WELL to remember that a person who evades arrest by running will, in the course of fleeing, commit other violations that along with the evading constitute reckless driving. Thus far only misdemeanors have been discussed but what if while evading arrest the violator should kill someone or injure them? Now we have a felony charge.

It is hoped this article will be read by some of our drivers who may have thought about evading arrest by running and that it will discourage them from even thinking of it, let alone attempting it. Should anyone have any doubts about whether the police will stop the chase if the speed gets high enough, you have only to ask anyone that has ever tried evading arrest.

Lt. Nash of the traffic division summed it all up quite well when he said, "We, whose job it is to protect life and property will always continue to do our job as best we can, and a speeding vehicle being driven by a person foolish enough to try and run from us will not alter our purpose. The violator will be apprehended and every traffic law that was violated by the driver will be charged against him."

Fall is an ideal time to plant native evergreens since the soon-to-follow rains will help get them established and by next spring you can largely ignore them. What many a gardener doesn't realize is that natives are not used to attention, and too much kindness can kill them. At the start, they take moisture, but after the first few months they can usually take or leave it alone.

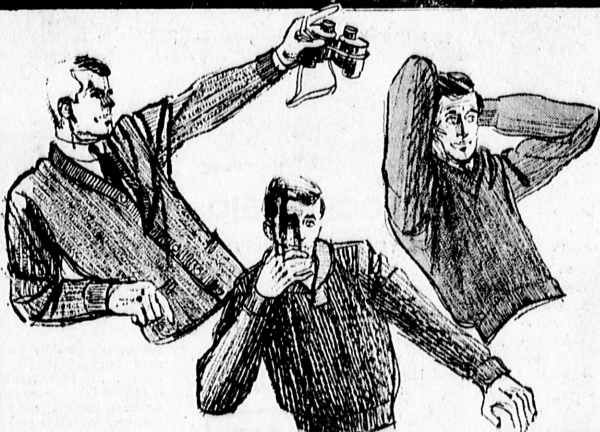
FAST, EXPERT

SHOE REPAIRING

Shoe repair means extra wear! Our expert repairs and fast service save you money!

FENWICK'S
Shoe Store and Repairing
1420 Marcellina - FA 8-6487
Downtown Torrance

the akron

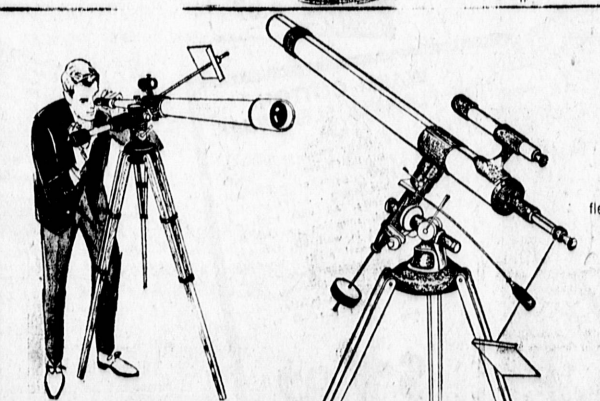


Wool-&Orlon Sweaters for Men

- big, bulky, beautiful . . . a veritable autumn feast!
- well-knit sweaters of 50% wool and 50% orlon . . . a prized combination for looks, for lightness, for longevity
- we have v-necked pullovers . . . shawl-collared pullovers . . . zippered cardigans . . . buttoned cardigans . . . all styled with a rugged, masculine flair . . . so right for you!
- in dark ivy . . . wine . . . autumn gold . . . polar blue . . . moss tweed . . . slate . . . and endlessly on
- sizes small, medium, large, extra-large . . . tagged about \$7 elsewhere

3.99

sorry, no mail orders

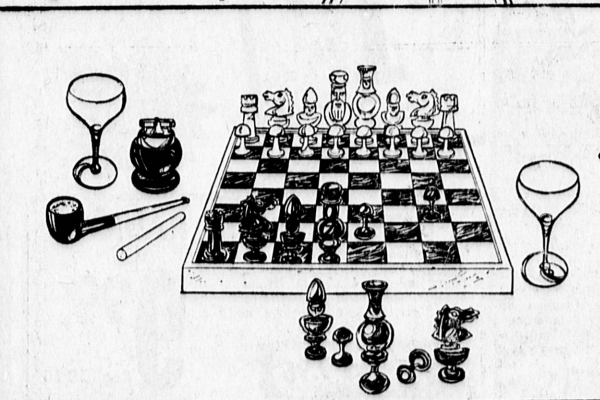


150 Power Astronomical Telescope

- you too can be an astronaut!
- get close to the moon, the planets, the satellites . . . travel with this powerful refractor-type telescope!
- three eyepieces . . . 45, 100 and 150 sharp magnifications!
- diagonal prism for easy viewing . . . flexible cable shaft for slow motion adjusting
- combination mount . . . ascension, declination and horizontal motion
- 62mm objective achromatic lens
- finest universal gear adjustments
- optional accessories: 6x30 star finder, diagonal prism, sunglasses, sun screen, hardwood case, etc.
- extends 7 feet high

59.99

sorry, no mail orders



Alabaster Chess Men from Italy

- for the chess buff who has everything!
- a grandmaster set, carved in Italy of black and white alabaster . . . 32 pieces with the look and feel of marble!
- the 3-inch king is sedate and bearded . . . his queen is aloof and receptively powerful . . . there's a solemn bishop and a noble steed for a knight . . . and the castle's a castle!
- you've wanted this set at twice our tag . . . now it's your move!

32-piece set 11.99

Marble Chessboard

- solid Italian marble, 13" square

7.99

sorry, no mail orders

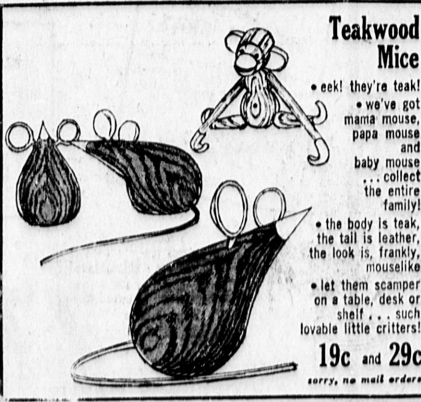


Bongo Drums from Mexico

- 2 drums in a set . . . one is 5 1/2 inches wide, the other is 7 inches wide
- the drumheads are taut resounding sheepskin
- the drums are laminated redwood and pine
- the sound is a fun-beat . . . and everybody can paradi-diddle a liddle!

1.99 set

sorry, no mail orders



Teakwood Mice

- eek! they're teak!
- we've got mama mouse, papa mouse and baby mouse . . . collect the entire family!
- the body is teak, the tail is leather, the look is, frankly, mouse-like
- let them scamper on a table, desk or shelf . . . such lovable little critters!

19c and 29c

sorry, no mail orders

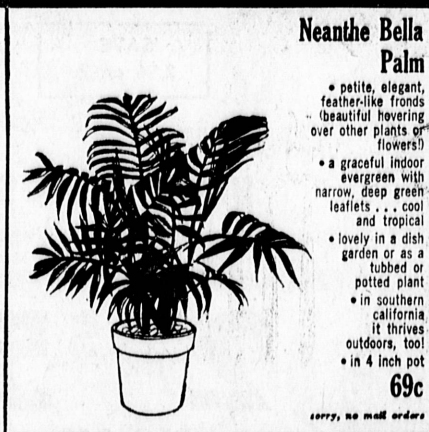


Sale of Doll Carriages & Strollers

- delight for your little doll!
- for the carriage trade . . . hundreds of colorful carriages and strollers . . . with white baked enamel finishes on steel frames and adjustable hood
- bright hoods and cradles in charming floral prints . . . quilted, washable!
- strollers too . . . with detachable diaper bags and fringed canopies . . . surreys with style!
- a huge selection (ah, to be young again!) . . . carry several home for Christmas!
- usually twice these tags!

99c to 5.99

sorry, no mail orders



Neanthe Bella Palm

- petite, elegant, feather-like fronds
- beautiful hovering over other plants or flowers!
- a graceful indoor evergreen with narrow, deep green leaflets . . . cool and tropical
- lovely in a dish garden or as a potted plant
- in southern California, it thrives outdoors, too!
- in 4 inch pot

69c

sorry, no mail orders



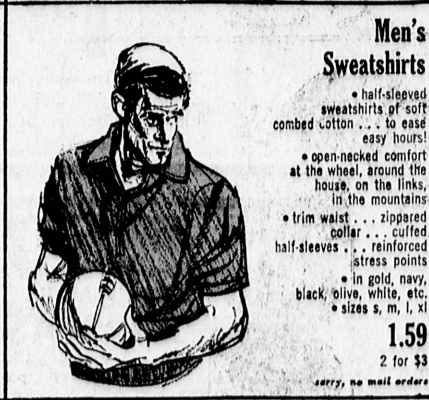
Orlon Knit Boleros

- lovely to look at . . . delightful to wear
- charming boleros in go-over anything colors of white, pink, blue or black
- soft cover-ups of 100% orlon that hamper cool breezes, check drafts, add glamour to sundresses!
- cozy knits in lay patterns, lightweight as air
- sized for you in small, medium, or large

1.59

2 for \$3

sorry, no mail orders



Men's Sweatshirts

- half-sleeved sweatshirts of combed cotton . . . to ease easy hours!
- open-necked comfort at the wheel, around the house, on the links, in the mountains
- trim waist . . . zippered collar . . . cuffed half-sleeves . . . reinforced stress points
- in gold, navy, black, olive, white, etc.
- sizes s, m, l, xl

1.59

2 for \$3

sorry, no mail orders



Wool Feather Duster

- billowy australian wool in dazzling colors (are feathers passe?)
- a huge puff of red or orange or gold or pink or blue . . . on a contoured black handle . . . 20 inches long . . . for a brisk whisk or a bright sight . . . to dust or to decorate (put a couple in a vase!)

89c

sorry, no mail orders



Planters from Mexico

- hand-painted pottery . . . this ancient Mexican art, now turned to modern decor!
- four sizes for your plants . . . with color-emphasis on greens, browns, blues, golds
- 8" diam.
- 9" diam.
- 10 1/2" diam.
- 11 1/2" diam.

99c

1.39

1.59

1.99

sorry, no mail orders

OPEN DAILY
9 A.M. to 9:30 P.M.
SUNDAYS 10 to 7

West LOS ANGELES
Sepulveda & National EX 1-5225

SOUTH BAY Torrance
Hawthorne Blvd. & 180th St. 370-3535