

**MAYOR BONES UP . . .** Ray Bynum, student body president at Torrance High, here bones up on matters which he feels might be in the realm of a mayor's duties. He sat in for Mayor Albert Isen Tuesday as part of the Junior Citizens Day program in the city. (Herald Photo)

## Hospital Slates Emergency Care Lecture Series

A second lecture series on "Immediate Care of the Sick and Injured," for persons who need advanced first-aid information in their occupational lives, begins this week at South Bay Hospital, it was announced by a hospital spokesman.

Dr. Arnold C. Niemeyer, former South Bay Hospital chief of staff who initiated the lecture series last year, said the lecture committee has invited local fire departments, police departments, ambulance services, and the lifeguard service, to attend the 16 lectures, which will be given at 7:30 p.m. Wednesday in South Bay Hospital's staff cafeteria. Lectures will be repeated the next night.

DR. NIEMEYER also said lecture invitations also have been dispatched to safety teams of local industrial concerns, such as Shell Oil, Union Carbide, and AirResearch. Interest in the lecture program, resulting from the first series last year, has come from communities of Downey and El Cajon, Dr. Niemeyer said.

It is anticipated the present series will be attended by approximately 60 persons.

Lectures will be given by South Bay Hospital staff doctors and Don J. Haley, chairman of safety services of South Bay Branch of American Red Cross. Nature of the lecture material and programming presumes students have completed previous Red Cross first aid courses.

SUBJECTS covered will be shock; bleeding chest emergency; pediatric emergency; orthopedic emergency; head, neck and back injury; burns; childbirth; psychiatric emergency; irradiation; electrocution; cardiac emergency, and transportation of injured persons.

Doctors in charge of the series are Drs. John N. Steward and Ronald T. Piccirillo. Giving lectures will be Drs. Robert C. Schaeffer, Robert A. Schmit, Richard J. Lescoe, Kenneth Z. Zike, James F. Robinson, John C. Todd, John L. Bourne, John E. Gunning, Robert A. Richards, and Joseph E. Scallan.

The lecture program is under auspices of the South Bay Hospital emergency room committee, the emergency and disaster committee of Southwest District of Los Angeles County Medical Assn., and the training division of Area G Medical Service of Civil Defense.

## Homecoming Chairman Announced for USC

Appointment of John R. MacFaden, Los Angeles and Hermosa Beach public relations counsel, as general chairman of the 1961 University of Southern California homecoming committee has been announced by Bruce W. McNeill, president of the USC General Alumni Assn. Homecoming will be celebrated on campus on Saturday morning, Nov. 11, starting at 10 a.m.

## Moose Plan Dance For Area Youth

"Youth Honor Day," a program sponsored by the Loyal Order of Moose fraternity, will be observed in the Torrance area with the presentation of the dance for teen-agers in the Torrance Moose lodge hall, 1744 W. Carson St., on Halloween, Tuesday, Oct. 31, from 7:30 to 11 p.m.

The "Torrance Teens," a group sponsored by the Moose lodge and chapter, will direct the evening's activities. Bill Licht is president of the youth organization. William Davis, C. R. Britt Jr., Mrs. Lester Reinhart and Lorraine Walker are the group's adult advisers.

THREE additional events have been scheduled for the month of October by the activity committee of the lodge.

A Halloween party for the adults of the Moose lodge and chapter has been planned for Saturday, Oct. 28. Hank Kolter and Lorraine Walker are the program co-chairmen. Music for dancing will be provided by "Vi and the three J's."

On Saturday the lodge will conduct a "White Elephant" sale to secure funds for a continuing program of charitable activities. Members of the lodge will arrange for a pick-up of furniture, electrical appliances or other items to be donated for the sale.

George Snyder, activity chairman of the lodge, has announced the scheduling of a "dime-dip" dinner program in the lodge hall on Tuesday.

James McCune and Charles R. Britt Jr., officers of the lodge in 1959 and 1960, received one of the highest honors that can be conferred by the national organization of the Loyal Order of Moose. The two Torrance men were admitted into the order's Fellowship Degree at a recent meeting of the California Moose Assn.

aster committee of Southwest District of Los Angeles County Medical Assn., and the training division of Area G Medical Service of Civil Defense.

## FAST, EXPERT SHOE REPAIRING



Shoe repair means extra wear! Our expert repairs and fast service save you money!

## FENWICK'S

Shoe Store and Repairing  
1420 Marcelina - FA 8-6487  
Downtown Torrance

## U.S. Steel President Lauds American Giving

"On both sides of the Iron Curtain, the principal objective seems to be acquiring what this country already has achieved in the way of industrial . . . progress and a high standard of living for our people," says President Leslie B. Worthington in the October issue of the U. S. Steel News, employee publication.

Identifying October with the country-wide United Fund appeal, Worthington says that "an outstanding characteristic of this great nation of ours is our traditional willingness to

give assistance, voluntarily, to those in need. Out of this has grown our system of privately supported charities, a system that is without equal in all the world.

"AND ONE of the developments which has contributed to the effectiveness of our system," the U. S. Steel chief points out, "has been the combining of many charities within a Community Chest, United Fund, Good Neighbor Fund" and other similar organizations.

Calling on employees to "join in supporting your local organ-

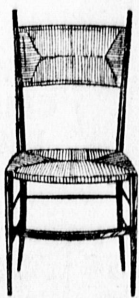
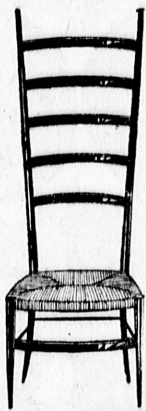
izations this year," Worthington observes that a single annual campaign permits "our contributions to go farther and reach more people, helping them all, all at once."

IN A FEATURE article, "Steel Rides the Rails," the News describes how new products from U. S. Steel research are helping the railroad industry "improve its position," faced as it is "with many complex problems that are threatening to cloud its future progress . . ."

Besides citing the traditional

railroad products on which U. S. Steel cut its teeth — rails, axles and wheels — the article discusses such recent railroad-developed uses for new steels as: a tougher, lighter gondola ore car; a stainless steel covered-hopper car, designed for easy cleaning, which eliminates the danger of contamination; passenger coaches featuring new applications of stainless and vinyl-coated steels, the latter combining color and texture to the strength of steel; and a low, triple-decker flatcar for various "piggy back" hauling operations.

# the akron

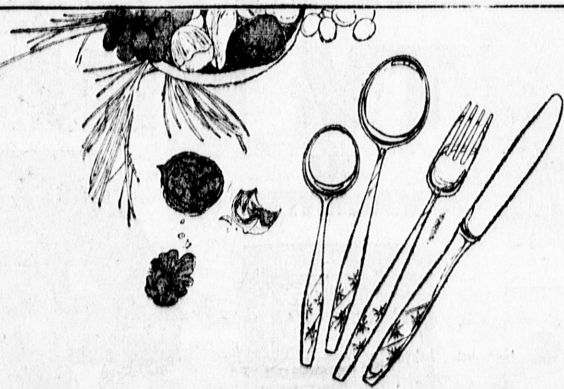


## Italian Chiavari Chairs

- here again from Italy . . . and into your home as imposing sinner-pieces!
- created by master craftsmen in proud Italian workshops . . . with the heirloom quality built in
- the seats are golden fiber rush . . . the frames are alpine hardwoods, lacquered to a gleaming black (three coats!)
- inviting around a dinner table, as occasional chairs, at midday's dressing table, almost anywhere!

ladder-back 7.99  
rush-back 8.99  
46" high-back 10.99

sorry, no mail orders



## 50-Piece Flatware Service for Eight

- service for eight (invite some friends) . . . with a butter knife and sugar spoon as extras!
- fine imported flatware for your special service or for daily dining . . . designed to delight the hand, the eye, the budget!
- 16 teaspoons . . . 8 soup spoons . . . 8 dinner forks . . . 8 salad forks . . . 8 serrated knives . . . plus the butter knife and sugar spoon . . . 50 matching pieces in all
- served with an utterly delicious price-tag.

50 pieces 3.99

sorry, no mail orders

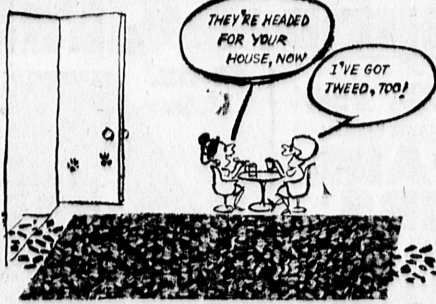
## Sale of Tweed Carpeting

- patter of little feet for big feet . . . no problem!
- huge roll after huge roll . . . all broadrooms of viscose rayon pile . . . tightly-woven carpeting to floor your favorite rooms
- vast 12-foot wide rolls in the season's best color-blends . . . black-and-white . . . beige-and-white . . . chocolate-and-white . . . to name a few
- carefree and practical (they hide footsteps!)
- and it's latex backed for even stronger wear
- all wonderful and all yours . . . at half of what you planned on paying!

1.29 sq. yd.

• rubber padding 89c sq. yd.

sorry, no mail orders



## Accordion from Italy

- music, music, music . . . squeeze, please!
- for your little musician . . . a true miniature accordion with ten melodic keys . . . and a 6-key bass section!
- easy to learn to play . . . a comfortable size for the young 'un . . . and an authentic accordion sound!

3.99

sorry, no mail orders



## 11" Decorator Matches

- striking beauty!
- 11-inch matches in a handsomely decorated matchbox
- 100 matches per box . . . spot them around a room for color and convenience
- bright gifts, handy at bbq time, as small stiffs

box of 100 39c

sorry, no mail orders

## Brass Ash Trays from India

- hand-etched trays in gleaming brass . . . here from India
- 4 inch squares, circles, flower shapes, leaf-shapes, teardrops, others
- scatter them around the house (one per chair, one per smoker) . . . or save them for gifts

49c

3 for 1.29

sorry, no mail orders

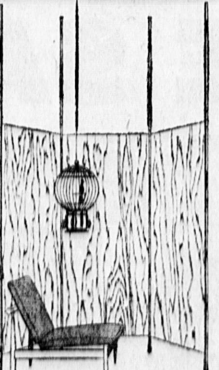


## 4'x8' Sand-Blasted Plywood

- finally here . . . glad you waited!
- huge panels of magnificently textured plywood . . . panels unlimited!
- 4'x8' and 5'x16-inch thick . . . yours to paint, varnish, stain, leave as is!
- a stunning sculptured look to any room . . . and we have all you need, at

3.99 4'x8' panel

sorry, no mail orders



## Wool Fashion Suits of Italy

- now-and-future suits . . . so apropos 12 months out of 12!
- couture designs . . . flawless tailoring . . . imaginative styling . . . fully lined fitted, boxy, single or double-breasted jackets (some in the newest longer lengths!)
- narrow or easy-fitting skirts . . . and adjustable waistbands!
- 100% wool in many wondrous guises . . . in superb colors . . . pumpkin, beige, royal blue, greys, roses, tweeds, jacquards, and endlessly on!

the Italian look is here . . . continental fashion brought close to home . . . in all sizes, triple our tag in Rome and Florence

9.99

sorry, no mail orders



## Wall Shelf Standards

- put convenience on the shelf!
- room for everything . . . shelves for books, toys, bric-a-brac, what-nots . . . and you build 'em yourself with a mere screwdriver!
- all-metal wall standards . . . put up so easily, then attach the brackets . . . presto! frames for all your shelves!
- amazingly sturdy . . . no overloading woes . . . a practical addition to any room

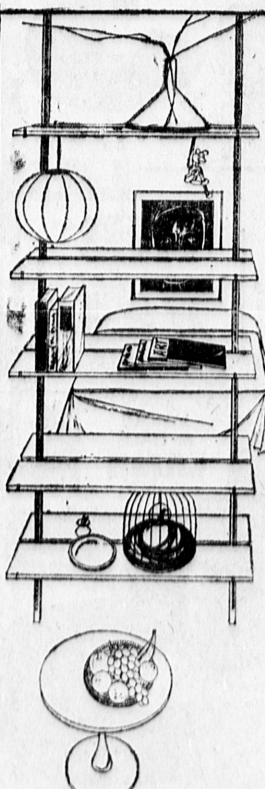
each 2 ft. length 39c

each 4 ft. length 69c

- chromed brackets: 6" . . . 19c 8" . . . 29c 10" . . . 39c

• rosewood and novaply shelving is here, too!

sorry, no mail orders



## SPECIAL PANTS 39c

Cleaned and Pressed

LAUNDERED SHIRTS 3 FOR 69c

1116 Crenshaw  
Across From  
Lucky Market

3713 W. 190th  
Across From  
General Petroleum

SAV-ON CLEANERS

OPEN DAILY  
9 A.M. to 9:30 P.M.  
SUNDAYS 10 to 7

West LOS ANGELES  
Sepulveda & National EX 1-5225

SOUTH BAY Torrance  
Hawthorne Blvd. & 180th St. FR 3-2424