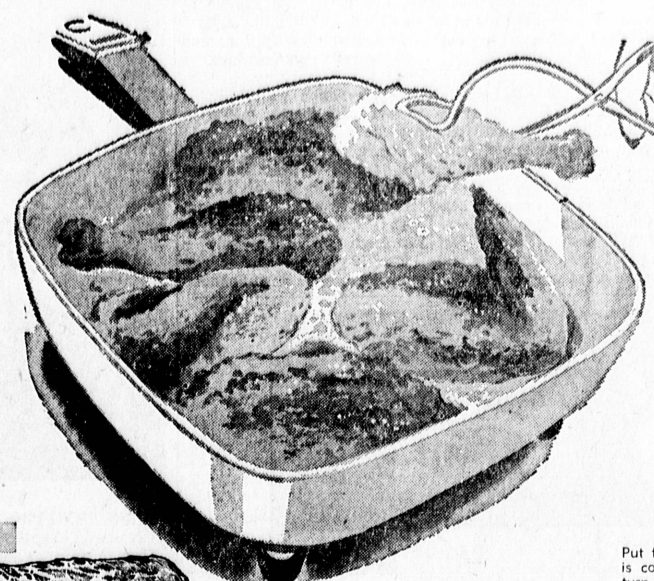
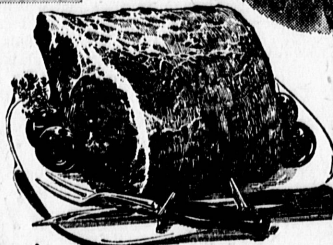


DOLE
APPLE
JUICE
5 \$1
JUMBO
46-OZ.
CAN



FRESH GRADE "A"
Young Whole Body
FRYERS
25¢
lb
CUT-UP FRYERS 29¢
lb

DOLE
CAKE
MIXES
29¢



FRESH EASTERN GRAIN FED SEVEN RIB PORTION ROAST
PORK LOIN 49¢
lb
TENDERLOIN PORTION PORK LOIN ROAST . . . 59¢
lb

DOLE
ROZEN
WAFFLES
10¢
LARGE
8-COUNT
PACKAGE

RATH'S "BLACK HAWK" HICKORY SMOKED, SUGAR CURED
PICNICS 5 to 7-lb. Average **35**¢
lb
DELICIOUS PRE-CARVED SMOKED PICNICS . . . 39¢
lb

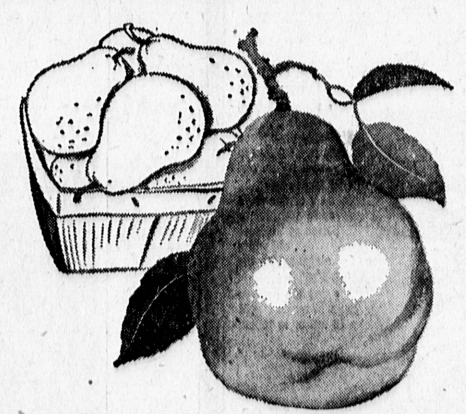
Pineapple Picnic . . .
1-Ham
1-Cup Brown Sugar
1-Cup Prepared Mustard
1-Cup Sliced Pineapple
1-Cup Cloves
Using a sharp knife, cut away heavy skin from pineapple. Make a paste of prepared mustard and brown sugar. Spread paste evenly on top of pineapple. Place pineapple slices on top and fasten with toothpicks and cloves. Bake in a moderate oven (350) allowing about 30 minutes per pound. Baste with pineapple juice. It's a good idea to use Aluminum Foil to line pan.

Lancaster Farms Fresh Grade "A"
ROASTING CHICKENS 4 to 6 lbs. Average **49**¢
lb
RATH'S BLACK HAWK. Wonderful way to start the day.
RATH'S SLICED BACON One pound Package **69**¢
lb

BROADBILL CATALINA CENTER CUT.
SWORDFISH STEAKS 69¢
lb
BANQUET PERFECT HEAT N' EAT.
FRIED FISH STICKS 49¢
lb
BANQUET PERFECT HEAT N' EAT.
FRIED FILET OF SOLE 69¢
lb
BANQUET PERFECT HEAT N' EAT.
FRIED FILLET OF PERCH 49¢
lb

WAFFER THIN SLICED BACON 79¢
lb
OSCAR MAYER 1-lb. PACKAGE, BREAKFAST
PORK LINK SAUSAGE 69¢
lb
FRESH CAUGHT DELICIOUS, TENDER
MEDIUM SIZE GREEN
SHRIMP 89¢
lb

For every hot dog and hamburger 18-oz. bottle.
SAUCE 29¢
quick lunches or dinners. 8-oz. frozen pie.
4 for 89¢
No. 1 can.
OLIVES 4 for \$1
and style dinner. No. 2 1/2 Can.
ANS 5 for \$1
It's so healthy for him too. 5-lb. Bag.
5 lbs. 69¢
12 1/2"x17". Durable. Reg. 1.29.
TRAYS 99¢



SWEET, JUICY, ORCHARD FRESH
BARTLETT PEARS
3 lbs. **25**¢
VINE RIPENED, NORTHERN
CASABA MELONS 2 1/2 lb **21**¢
lb

FOOD GIANT
ENGLISH MUFFINS
6 for 31¢

NORTHERN RED VELVET
YAMS 2 lbs. **25**¢

ENTER DIAL SOAP'S
\$50,000 WHO'S, WHICH GAME
SAVE 5c WITH MAGAZINE COUPON
2 Bath Bars 39¢

GREEN GIANT CUT ASPARAGUS SPEARS 10 1/2-oz. Can 25¢
GREEN GIANT WHITE, WHOLE KERNEL CORN 12-oz. Can 23¢
PLAIN or PEANUT M&M CANDIES 5 3/4-oz. Pkg. 29¢
PUREX LIQUID BLEACH 1/2-Gal. Plastic 43¢

SALE DAYS - THURS. thru SUN., OCT. 12 thru 15

In TORRANCE 3731 Pacific Coast Hwy. at Hawthorne
In SAN PEDRO 28849 Western Ave.
In NO. TORRANCE 4848 W. 190th St. at Anza
In HAWTHORNE 423 S. Hawthorne Blvd. at 132nd
In GARDENA 24990 Crenshaw Blvd. at Compton
In MANHATTAN BEACH 2400 Sepulveda Blvd. at Marine

FOOD GIANT
Where Your Food Dollar Buys More—More Easily

CROSSWORD PUZZLE

ACROSS
1-Writing fluid
2-Invigilant
3-100
4-Hail
5-Thick, black substance
6-Lassow
7-Macaw
8-Look fixedly
9-Join
10-Is ill
11-Afternoon party
12-Oriental salutations
13-Stalk of grain
14-Spanish article
15-Precipitous
16-Epilepsy
17-Edible seed
18-Dined
19-Pale
20-Edible fish
21-Moving part of motor
22-Prong
23-Right
24-Goddes of retributive justice
25-Limb
26-Ceremony
27-Ravages
28-Approaches
29-Puss
30-Color
31-Number
32-Encountered
33-Regarding to the kidneys
34-Furrow

DOWN
1-Possessive pronoun
2-Burned
3-South
4-African
5-Blissful
6-Artificial language
7-New Deal agency (init.)

7-Twisted
8-Slaves
9-Vill
10-Native metal
11-Isolated
12-Consumes
13-Bemirch
14-Clogs
15-Baskin
16-Surgical thread
17-Uncooked
18-Trumpeter bird
19-Diminishes
20-Man's name
21-Southern blackbird
22-Not real
23-At a distance
24-Nerve network
25-Priest

46-Chairs
47-Simple
48-Cut of meat
49-Fruit drink
50-Decay
51-Offspring

52-Sink
53-Vessel
54-Curved plank
55-Parent (colloq.)

Distr. by United Feature Syndicate, Inc. 11

Health Officer Says Pinworms Quite Cosmopolitan in Nature

By K. H. Sutherland, M.D., County Health Officer

Human pinworms (*Enterobius vermicularis*) have a cosmopolitan distribution and are the most common of the intestinal parasites. Since it is estimated that at all times about 20 per cent of this country's population is infected, it is understandable that the matter of control may present a problem. This is particularly true in the case of children, among whom the percentage of infection is even higher.

Children of school age are the individuals most often infected, chiefly owing to the fact that they so frequently handle objects that are more or less common property. Once infected with these worms, the child will soon be the means of spreading the infestation throughout the family unless meticulous care is taken to prevent it.

THIN AND threadlike organisms, usually about one-half inch in length, pinworms are also sometimes called seat-worms. The eggs of the worm enter the body through the mouth and hatch out in the stomach and small intestine before moving on to the large bowel. In about two to five per cent of cases, the worms enter the appendix and produce the symptoms of appendicitis.

The male worm is excreted, but the female migrates to the exterior of the body and deposits eggs around the anus. Itching causes the individual to scratch, and the ova of the worm is forced under the finger nails.

THE EGGS are easily transmitted to the mouth by way of the hands or ingested with food that the hands have touched. Infection also may be spread by contact with sheets, towels, or clothing that harbor pinworm eggs. The eggs may be found in contaminated dust that settles on furniture or elsewhere around the house and may therefore be inhaled, whereupon they are often mixed saliva and swallowed.

Once in the stomach, the reproductive cycle of the worm begins.

The most common symptom of infection is itching around the perineal region and the anus. Disturbed sleep, fretfulness, loss of appetite and weight, and paleness are among the other signs of infestation.

THE CHIEF factor in control of pinworms, other than immediate medical treatment, is scrupulous cleanliness. Recommended procedures include thorough washing of the hands with soap and water before eating or handling food and after any visit to the toilet. Finger nails should be kept short and clean.

Scrupulous attention must be paid to housekeeping, and frequent changes of undergarments, bedding, towels, and any other articles that come in direct contact with the body, is advised. When only one person in the home is infected, the toilet seat should be scrubbed and disinfected after use by the patient.

STRICT SUPERVISION of personal hygiene is essential if preventive or treatment measures employed are to be successful. This is especially true in the case of children. There are no existing regulations that require children to stay home from school when infected with pinworms, but it is considered desirable that they do so, or attend only when under medical care.

A pamphlet giving additional information on pinworms will be mailed to anyone who sends a card of request to the Division of Health Education, Los Angeles County Health Dept., 241 N. Figueroa St., Los Angeles 12.

Four Narbonne High Students Get Honors

Four Narbonne High School students have been named semi-finalists in the annual National Merit Scholarship program.

Notified of their selection were Karen Sjudmak, Carol L. Todd, John R. Tucker, and Ronald J. Williams.

Sun-Away
TRANSPARENT WINDOW TINTING

A permanent silicone tinting process applied to your windows. Lasts indefinitely and requires no maintenance!

for your
HOMES • OFFICES • FACTORIES
STORE FRONTS

ELIMINATES FADING, STOPS GLARE, REDUCES HEAT AND PROVIDES A COMFORTABLE ATMOSPHERE

A PROVEN PRODUCT WITH SATISFACTION GUARANTEED

- Protects Carpeting, Furniture, Draperies From Fading.
- Protects All Types of Window Displays From Violet Ray Fade.
- Increase Employee Efficiency Through Better Working Conditions.

PHONE 378-8066
(It's Local—Just Dial all the Numerals)
24-HOUR PHONE SERVICE
SUN-AWAY SO. BAY CO.
1924 Pacific Coast Highway
Suite "F" — Redondo Beach