

Hayden, Stone to Open New Peninsula Office

Hayden, Stone & Co., members of the New York Stock Exchange, the Pacific Coast Stock Exchange, and other leading securities and commodities exchanges, will open a new office on Nov. 1 at 2777 Silver Spur Road, Rolling Hills Estates.

This will be Hayden, Stone's eighth California office and its second on the Palos Verdes peninsula. Other California offices are in Los Angeles, Beverly Hills, Brentwood, Sherman Oaks, Palos Verdes Estates, La Jolla, and Visalia.

Mrs. Shirley R. Chilton, who has been manager of the Palos Verdes Estates office at 19 Malaga Cove Plaza, will become general manager of the two Peninsula offices and will make her headquarters in the new Rolling Hills Estates office which will be located in the

new 33-acre Peninsula Shopping Center.

Arne J. Huhta, who has been a senior account executive in the Palos Verdes Estates office, will become manager of that office. Huhta has been in the investment business since his graduation from college more than two decades ago. A native of Dekalb, Ill., he was educated at Northern Illinois College and the University of Illinois. During World War II, he served three years with the Marines.

The Rolling Hills Estates office will serve the Southern Peninsula including San Pedro, Wilmington, Rolling Hills, and Portuguese Bend. The office will have a luxurious lounge instead of the old-style boardroom. Clients and brokers will have up-to-the-minute quotations and financial news

through Translux projections of the moving tapes of the New York Stock Exchange and the American Stock Exchange, augmented by the Dow Jones News Service and Quotron, the electronic "miracle memory" machine which places last and representative "scan" quotes at one's fingertips. There will be a reference library featuring the standard financial services plus the output of the company's New York research department, one of the largest and most respected in the business. The office will be furnished in teakwood.

Starting personnel at the new office includes G. William Booth, Bruce P. Andrews, Mark F. Sanders, and Edward J. Bonville Jr. This staff will be expanded.

All California offices of Hayden, Stone & Co. are under the

direction of three general partners: Charles T. Jawetz, Brentwood; Lloyd C. Young, Los Angeles; and Joseph A. Field Jr., Sherman Oaks.

Hayden, Stone & Co. has offices throughout the United States and in free Europe and the Orient. The company was established in 1892.

The greatest security of the liberties of a people who do not cultivate the use of money... The people who have no money have few wants, and these are supplied with ease and in an equal manner. Equality is then unavoidable, and hence it proceeds that their chiefs are not despotic.

—CHARLES DE MONTESQUIEU (1689-1755)

Art Collection On Display at Pen & Quill

A collection of oil paintings on velvet, the works of Carol Eytting, is currently being exhibited at The Pen & Quill in Manhattan Beach.

The artist's wide range of subject matter, reflecting her world travels, are displayed in the restaurant's main dining room.

Inspired by the black velvet paintings of Leetag of Tahiti, Miss Eytting developed her own technique 10 years ago. She uses the velvet as an integral part of each painting rather than merely as a background.

He who reforms, God assists. —MIGUEL DE CERVANTES



READY FOR '62... Roy Abernathy (left), executive vice president of American Motors Corp., discusses sales plans for 1962 Rambler with Whitt Landers (center) and Robert Gibson, partners of Hunt Rambler, 412 W. Anaheim, Wilmington. New Ramblers are now on display at the Hunt showroom.

CUT FOOD COSTS

... with these money-saving, outstanding first-of-the-week food specials ... and get famous S&H GREEN STAMPS, too!



KRAFT CHEESE

DELUXE SLICES
American, Swiss
or Pimiento

8-oz. Pkg. **29¢**

Buy 'em in the BIG BAG and SAVE!

LIBBY'S FROZEN PEAS
1 1/2-lb. Poly Bag

3 BAGS FOR \$1

GRAPEFRUIT

DONALD DUCK
Luscious sections
for salads, desserts

5 No. 303 Cans \$1

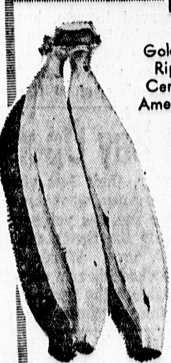
WHITE KING GIANT D



PRICE INCLUDES 7c OFF THE GIANT SIZE

49¢

dew fresh PRODUCE



Golden
Ripe
Central
American

BANANAS

2 lbs. 25¢

MELONS

Sweet, ripe
CASABAS

3 lb. 3¢

Get your children's school and Art projects with
PICTURE ENCYCLOPEDIA FOR BOYS AND GIRLS



18 VOLUME SET

Volume No. 1 only **49¢**

Volumes 2 thru 18 99¢

QUALITY you can SEE...
FRESHNESS you can TASTE!



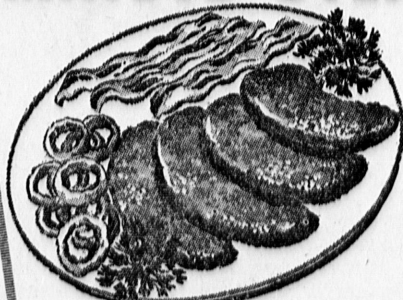
USDA CHOICE

BONELESS SWISS STEAK

79¢ lb.

TENDER, CUBED

MINUTE STEAKS 98¢ lb.



YOUNG STEER BEEF

LIVER 49¢ lb.

Serve with
bacon, onions

DUBUQUE SLICED

BACON 69¢ lb.

Royal
Buffet
Brand

Advertised
Prices Valid
Monday
thru
Wednesday
Oct. 9, 10, 11
1961



Sales Subject to Stock on Hand

BONELESS
BEEF
STEW **79¢ lb.**

GROUND CHUCK

FRESH
LEAN

Made from
beef shoulder
fresh daily.

59¢ lb.

TORRANCE
1321 Post Ave.
FA 0-3122

TORRANCE
18200 and Arlington
DA 3-7065

TORRANCE
20900 Hawthorne
FR 1-5541

GARDENA
Van Ness & Rosecrans
DA 3-1767

new! EXTRA INTEREST AT AMERICAN SAVINGS

EXTRA INTEREST PLAN

Your savings earn interest from date received — even after the 10th of the month when funds remain through the end of any quarter. Earn up to 21 EXTRA DAYS of interest in any one month.

IN ADDITION

Funds received by the 10th continue, as before, to earn interest from the 1st of the month.

INSURED PROTECTION

Legal for pension, trust, church, union, foundation, organization and corporate funds.

STRENGTH OF RESERVES

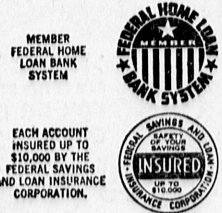
Federal requirements — 5%
National average — 8%
AMERICAN SAVINGS — 11%

Reserves over \$25 million... more than TWICE federal requirements.

TRANSFER YOUR ACCOUNT TODAY!

4 1/2%
Current
Yearly
Rate

INTEREST PAID OR COMPOUNDED QUARTERLY



AMERICAN SAVINGS

AND LOAN ASSOCIATION RESOURCES OVER \$300 MILLION

FOUNDED 1920 RESERVES OVER \$25 MILLION

REDONDO BEACH • 205 S. Pacific Ave. • FR 9-5444
HAWTHORNE • 145 No. Hawthorne Blvd. • OS 9-2581
MANHATTAN BEACH • 1130 Manhattan Ave. • FR 9-8451
SOUTH BAY CENTER-REDONDO
1959 Kingsdale Ave. • 370-1511
(Near 174th and Hawthorne Blvd.)

OFFICE HOURS:
MONDAY-THURSDAY, 9 a.m. to 4 p.m.; FRIDAY, 9 a.m. to 6 p.m.
CONVENIENT LOCATIONS TO SERVE YOU

WHITTIER (Main Office) 210 E. Philadelphia OX 3-2771	PALMDALE 38500 N. Ninth St. E. WI 7-2127	MONTROSE 2314 Honolulu Ave. CH 9-6164
MANHATTAN BEACH 1130 Manhattan Ave. FR 9-8451	EAST WHITTIER 15733 E. Whittier Blvd. OW 1-1771	AZUSA In Foothill Center ED 4-8266
LA PUENTE 925 N. Glendora Ave. ED 6-4556	SO. BAY CENTER (Redondo) 1959 Kingsdale Ave. 370-1511	REDONDO BEACH 205 S. Pacific Ave. FR 9-5444
HAWTHORNE 145 N. Hawthorne Blvd. OS 9-2581	NORWALK 11618 E. Rosecrans UN 8-3795	TEMPLE CITY 9627 Las Tunas Dr. AT 7-9701
		GARDEN GROVE 12801 Harbor Blvd. JE 4-8650