

Out of the Past

From the Files of the HERALD

30 Years Ago

A trace of rain fell here 30 years ago this morning, but the fall was not enough to be recorded, according to the High School gauge recorders. Total for the season to date was 10.58 inches.

By a vote of nearly 8 to 1, Torrance voters took their stand with citizens of 12 other cities in the Metropolitan Water District in backing what was to become the greatest undertaking in the United States—the construction of the Metropolitan aqueduct that was to pour Colorado River water into the District cities within six to eight years.

Local returns showed 1,165 voters approving the bond issue with only 148 opposing. More than 40 per cent of the registered voters appeared at the polls. All other cities in the district registered sweeping majorities with Pasadena's 16-1 approval leading the rest.

Impressive funeral services were held at Long Beach for Dr. A. R. Wrightman, A.B., A.M., and Ph.D., and centenarian who passed away Sunday.

day at the home of his daughter, Mrs. W. H. Sinclair, 1521 El Prado, after an illness of three weeks. Dr. Wrightman was honored with an All-City birthday luncheon on March 31, the day before his 100th birthday.

Notices were displayed here at the banks, post offices, and Chamber of Commerce that the Federal Labor Department had issued a call to men to pick cotton in the San Joaquin Valley. A wage scale of 50 cents per 100 pounds was announced.

20 Years Ago

Alondra Park's checkered history took on a new twist 20 years ago this week when the county board of supervisors granted the California State Guard permission to establish military camps to train its own members and business and professional men at the county-owned site adjoining North Torrance.

Because the next contingent of selectees to leave the district for Army training was to be the second largest—29 men—since the Selective

Service Act became effective a year earlier, veterans organizations of three communities were planning special affairs for the group.

Carrying a nickel-plated small bore revolver, a man said to have been about 25 years old, held up and robbed a clerk at Ralph's Liquor Store at the corner of Gramercy and Cabrillo avenues of \$27 from the cash box late Saturday night.

"Life Begins for Andy Hardy," latest of the Hardy family adventures, opened Saturday at the Plaza theatre for a four-day run. Along with Mickey Rooney, all of the Hardy family favorites appeared in the picture, said to have given the young star the best opportunity to that date to show his unusual talents.

A gain of 89 pupils in Torrance schools to a record 2,258 enrollment was announced after one month of the new fall session. Lomita and Harbor City schools, under the Los Angeles city system, showed an increase of 134 for the first month.

Numerous Changes in Sales Tax Regulations Outlined by Chapel

By CHARLES E. CHAPEL, Assemblyman, 46th District
Assembly Bill No. 1769, by Assemblyman Bert DeLotto, of Fresno, pertains to the collection of the sales tax by retailers. I was a co-author, voted for the bill in the Assembly Committee on Revenue and Taxation, and also helped Assemblyman DeLotto get the bill passed on the floor of the Assembly.

It passed the State Senate, was signed by the Governor, and became known as Chapter 869, Statutes of 1961. It adds Section 6052.5 to the Revenue and Taxation Code of the State of California.

Two free copies of this important law can be obtained by writing to the Legislative Bill Room, State Capitol, Sacramento 14, Calif. I do not have copies for distribution.

THIS LAW requires the State Board of Equalization to prepare sales tax reimbursement schedules showing, in a prescribed form, total amount that may be collected by retailer from consumer in reimbursement of sales tax, computed on each sales price, from 1 cent through \$1,000, at the 3 and 4 per cent rates. It provides that schedules shall be available for inspection, duplication, or reproduction.

It requires retailers who collect reimbursements from consumers either (1) to use the schedules in computing reimbursements on sales price of each item sold or, where more than one item is sold in one transaction, on the aggregate

sales prices, or (2) include in sales price of each item an amount for reimbursement computed to nearest mill at applicable tax rate, in which event notice must be posted that posted or advertised price includes such reimbursement.

IT PROVIDES foregoing requirements regarding computation of tax reimbursement on sum of aggregate prices where both taxable and nontaxable items are included in same transaction are inapplicable unless purchaser requests that taxes be so computed. The State Board of Equalization is directed to enforce the regulations.

ASSEMBLY BILL No. 60, known as Chapter 866, Statutes of 1961, adds Section 6369 to

the Revenue and Tax Code of California. It exempts the sale, storage, use, and other consumption of defined medicines prescribed for treatment of human beings by persons authorized to prescribe medicines and dispensed on prescription filled by a registered pharmacist pursuant to law from the sales tax formerly imposed.

Senate Bill No. 294, cited as Chapter 149, Statutes of 1961, adds Section 6359.3, Revenue and Taxation Code, and provides that specific non-profit organizations, such as Boy Scouts, Girl Scouts, and Camp Fire Girls, are consumers and not retailers with respect to candy or other confectionery which they sell, where profits are used solely and exclusively for purposes of the organization selling such merchandise.

OCTOBER 1, 1961
THE TORRANCE HERALD

SENATE BILL No. 30, cited as Chapter 493, Statutes of 1961, adds Section 6363.5 to the Revenue and Taxation Code.

It exempts from the sales and use taxes, under specified conditions, meals served by religious organizations of the kind which qualifies for the so-called "church exemption" which exempts them from property taxation.

Rivieran Accepted In Accounting Group

Edwin A. Bowen, 401 Calle Mayor, has been accepted as a member of the Los Angeles Chapter of the National Association of Accountants. He is associated with a management consulting firm.

Opinions of Others

"The best board of education is often a shingle." — Ray Winans, West Springfield (Mass.) Record.

"It's no trouble at all to tell when a TV movie is an old one—the hero doesn't kiss the girl like he was eating an overripe peach." — Charlie Crawford, Lawrenceburg (Tenn.) Democrat-Union.

"The two-party system is based on the assumption that neither my way nor your way is necessarily the right way of getting the job done." — Dorothy S. Scott, Smithtown (N.Y.) Messenger.

"Right now there are more than 200,000 Americans under 25 years of age who have been out of work for six months or longer. Most of them dropped out of school and are not trained for higher-paying, skilled jobs needed by businesses and industry." — Leonard Sullivan, Mooreville, (N.C.) Tribune.

"Let's not be fooled into making apologies for the material accomplishments of our private enterprise system. Where we are short, and dangerously so, is in national dedication to fight to save the individual freedom that makes those accomplishments possible." — William A. Muir, Candor (N.Y.) Courier.

"You'll have to admit the Russians beat us to a solution to the parking problem—no cars." — Kenny Bennett, Greencastle (Ind.) Graphic.

"A poll was taken to see how many people watch TV in bars. The returns were staggering." — Fred W. Grown, Edgewater (N.J.) Bergen Citizen.

"If the magazines want to call a halt on their continuing illustrated features about all the Kennedy family's in-laws, grandparents, uncles, aunts, cousins and domestic pets, I will not make any protest." — Clarence E. Hebda, Fullerton (Neb.) Nance County Journal.

"Around the world, corrupt and Communist regimes are living off the fat of American billions that have been poured down the bottomless drain of idealism." — J. Morris Richards, Winslow (Ariz.) Mail.

Mailbox

Editor, Torrance Herald
I have just sent the following letter to Lt. Gov. Glenn Anderson, chairman of the State Lands Commission, in Sacramento:

Alerted by the Torrance Herald's Sept. 14th article entitled, "Beach Threat Looms," copy of which I enclose, I wish to offer my added objection to any activity, mining or otherwise, that would in any way depreciate or detract from the beauty and active use of our local beaches and waters for fishing and recreational purpose. As a family who has spent many enjoyable days together in the beach area, not only for sun and fishing fun, but just as much for rest and needed contemplation, it would, indeed, be a serious blow to find this avenue of activity suddenly impaired.

The preservation of our coastline is of utmost importance. The great need for wholesome recreation is clear and should not be overlooked. Keep our beaches and surf waters clear, clean, and free!

It will be interesting to see, when the decision is made, if the wishes and needs of the people of this area have been recognized.

MRS. VIRGINIA M. ERD
Torrance

Church Has New Hours

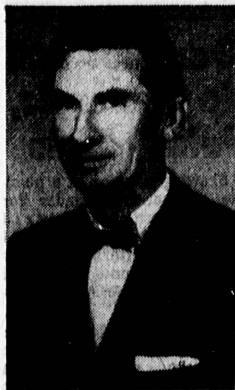
Walteria Community Methodist Church at 3646 Newton St. begins a new morning schedule today.

Early church service begins at 9 a.m., a half-hour earlier. Church school will begin at the same time. Junior, senior high school and adult education classes are scheduled from 10 to 11 a.m. The usual second morning worship hour and church school will be held from 11 to noon. For children in grades one through six a new program is being created that is not church school but extended sessions that will give background in churchmanship, music, crafts and other activities. This is being arranged for children of parents who will be taking part in the adult education program.

The adult education program will provide two classes. One will be Bible study for those that desire to receive a more complete understanding and background of the Scriptures. The other class will be on Christian living.

I dogmatize and am contradicted, and in this conflict I find delight.

—SAMUEL JOHNSON
(1709-84)
English critic



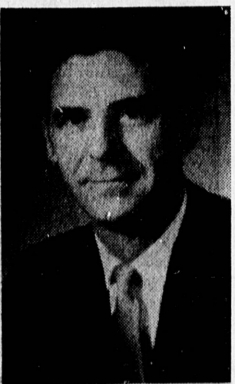
ROBERT H. SHERRETT

Bank Promotes Two Employees

Promotions for two men have brought a new assistant manager to Bank of America's Torrance Branch, 1255 Sartori Ave. Robert H. Sherrett, who has held the post for the past two years, has been elected assistant vice president and assigned to the loan supervision department at the bank's Los Angeles headquarters.

Succeeding him as assistant manager here is M. Gale Gardner.

SHERRETT is known locally for both his banking and civic



M. GALE GARDNER

work. He is secretary of the Torrance Rotary Club and active in the harbor area Community Chest.

He joined the bank as a messenger in 1936 but his career was interrupted for service in the Coast Guard during World War II. He then entered private business until returning to the bank in 1952. A year later, he was named to officer status.

Sherrett was born in Los Angeles and was graduated from Lawndale's Leuzinger High School. He furthered his his professional training at the American Institute of Banking.

GARDNER HAS been with the bank for almost 25 years, spending the past 14 at the Wilshire-Sweetzer branch in Los Angeles. His most recent assignment there was as general lending officer and head of the real estate section.

A native of St. Louis, he grew up in Los Angeles, attending Fairfax High School and the American Institute of Banking. He was a corporal in the Signal Corps during World War II.



Budget-wise Suggestions for
ECONOMY MEALS!

Family-pleasing meals are easy to prepare for LITTLE MONEY, with values like these!



UNCONDITIONALLY GUARANTEED MEATS

USDA CHOICE BEEF

CHUCK STEAK

Lean beef shoulder. Even more flavorful with Adolph's!

49¢ lb.

LEAN, MEATY
BEEF SHORT RIBS

Hearty for braising or baking!

29¢ lb.

GROUND CHUCK

Fresh, lean beef shoulder.

59¢ lb.

CALIFORNIA GROWN USDA GRADE A
Roasting Chicken



FRESH FROM LANCASTER
Plump, young to roast crisp golden brown.

4 to 5 lbs. Avg.

49¢ lb.

DUBUQUE ROYAL BUFFET SLICED BACON

69¢

BONELESS, WASTE-FREE CUBE STEAKS

98¢

FOX, YELLOW CLING

PEACHES

Slices or halves in delicious syrup.

LARGE NO. 2 1/2 CAN

19¢

WHOLE KERNEL
NIBLETS CORN

5 12-oz. Cans \$1

BROOKDALE FROZEN
FRENCH FRIES

Regular 9-oz. Package

10¢

CRACKER BARREL CHEESE

Sharp Cheddar

10-oz. Stick

49¢

dew fresh PRODUCE

LAKE COUNTY BARTLETT

PEARS



Sweet! Juicy!

2 1/2 lbs. 25¢

GARDEN-FRESH, MOIST

CARROTS

2 1-LB. CELLO BAGS 15¢

TORRANCE
1321 Post Ave.
FA 0-3122

TORRANCE
182nd & Arlington
DA 3-7065

TORRANCE
20900 Hawthorne
FR 1-5541

GARDENA
Van Ness & Rosecrans
DA 3-1767

Advised Prices Valid Monday thru Wednesday Oct. 2, 3, 4



Sales Subject to Stock on Hand

Learn with Linkletter
EVERY IMPORTANT THING FROM A TO Z

Give your children a head start with Art Linkletter's PICTURE ENCYCLOPEDIA FOR BOYS AND GIRLS

NEWEST WORLD Vol. 1 only 49¢

18 FACT-FILLED VOLUMES
over 2300 pages over 7500 pictures over 500,000 words